

Converting Colors

Android(4292790469)

Have a look what the booklet for
Android(4292790469) contains.

Android(4292790469)	3
<i>Conversions</i>	4
<i>Details</i>	6
<i>Harmonies</i>	11
<i>Previews</i>	23
<i>Color Blindness Simulation</i>	26
<i>CSS Examples</i>	29

Color

Android(4292790469)

Conversions

Conversions Part 1

Format	Color
Hex	DEC8C5
RGB	222, 200, 197
RGB Percent	87%, 78%, 77%
CMY	0.1294, 0.2157, 0.2275
CMYK	0.00, 0.10, 0.11, 0.13
HSL	7°, 27%, 82%
HSV	7°, 11%, 87%
XYZ	60.8565, 60.8694, 61.3648
YIQ	206.2360, 14.0750, 3.7310

Conversions

Conversions Part 2

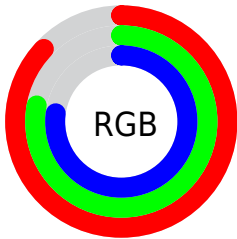
Format	Color
R _Y B	222, 200, 197
Decimal	14600389
CIE Lab	82.31, 7.21, 4.29
CIE LCh	82, 8.389, 30.796
Yxy	60.8694, 0.3324, 0.3325
Android (android.graphics.Color)	4292790469 (0xFFDEC8C5)
YUV	206.2360, -4.5533, 13.8250
Hunter-Lab	78.0188, 2.7013, 7.9793

Details

The Android color `4292790469` is a light color, and the websafe version is hex `CCCCCC`. A complement of this color would be `4291156958`, and the grayscale version is `4291743438`.

A 20% lighter version of the original color is `4294967294`, and `4289172111` is the 20% darker color. If you saturate the color by 10%, you get `4292785327`, and if you desaturate by 10%, it is `4292795611`.

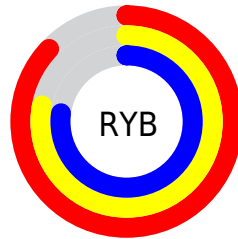
Distribution



Red (87%)

Green (78%)

Blue (77%)



Red (87%)

Yellow (78%)

Blue (77%)

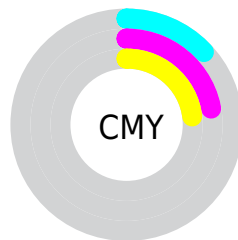


Cyan (0%)

Magenta (10%)

Yellow (11%)

Black (13%)



Cyan (13%)

Magenta (22%)

Yellow (23%)

Brightness & Saturation Gradients

These gradients show how the Android color 4292790469 changes by changing the brightness by 10 percent. The first figure shows a shift by +10% for each color and the second figure -10%.

Similar to the brightness gradients but the following saturation gradients show a change of the Android color 4292790469 by changing the saturation by 10% instead.

 4292790469

 4292790469

4294967295

 4290948522

4294967294

 4289172111

 4287395958

 4285751389

 4284106822

 4282528047

 4281080858

 4279828992

 4278190080

 4292790469

 4292790469

 4292785327

 4292795611

 4292780441

 4292800497

 4292775298

 4292804607

 4292770412

 4292765270

 4292760384

 4292755242

 4292750355

 4292745984

Harmonies

Analogous

The Analogous color harmony consists of three colors that are next to each other on the color wheel.



4292724941



4292790469



4292528831

Triad

The Triadic color harmony groups three colors that are evenly spaced from another and form a triangle on the color wheel.



4292790469



4290957765



4291153372

Complementary

The Complementary color scheme is a pair of colors which are on the opposite of each other on the color wheel.



4292790469



4291156958

Split Complementary

Split-complementary colors differ from the complementary color scheme. The scheme consists of three colors, the original color and two neighbors of the complement color.



4290629850



4292790469



4290499277

Square

The Square scheme is like the rectangle color scheme, but the four colors are evenly spaced on the color wheel.



4292790469



4291481535



4290433492



4291808218

Rectangle

The Rectangle color scheme consists of four colors that form a rectangle on the color wheel.



4292790469



4292266941



4290433492



4290957020

Sweetspot

The Sweet Spot groups the original color and five complimentary colors.



4292790469



4294965495



4292789723



4286610298



4278190080



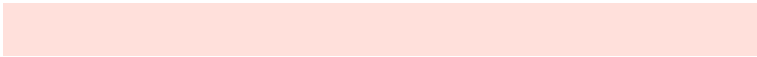
4286611584

Same Dimension

The Same Dimension uses a secret algorithm to generate beautiful new colors.



4292790469



4294959323



4292793541



4285556325



4289729792



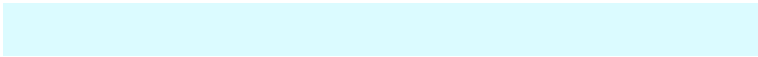
4281337344

Inverse Universe

The Inverse Universe completely reimagines the original color for something new.



4291156958



4292606975



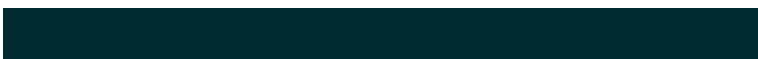
4291153886



4284837744



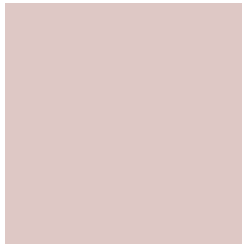
4278229936



4278201136

Previews

White Background



This preview shows how the Android color 4292790469 looks on a white background.

Color Contrast Check

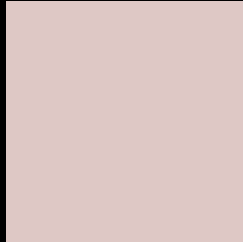
Large Text (above 18pt) WCAG AA × Fail

Any Text WCAG AA × Fail

Large Text (above 18pt) WCAG AAA × Fail

Any Text WCAG AAA × Fail

Black Background



This preview shows how the Android color 4292790469 looks on a black background.

Color Contrast Check

Large Text (above 18pt) WCAG AA ✓ Pass

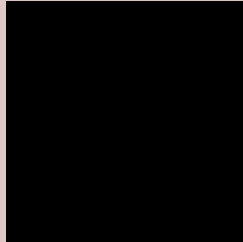
Any Text WCAG AA ✓ Pass

Large Text (above 18pt) WCAG AAA ✓ Pass

Any Text WCAG AAA ✓ Pass

If you want to check with other color combinations, try the [Color Contrast Checker](#).

Android 4292790469 Background



This preview shows how black text looks on a background with the Android color 4292790469.



This preview shows how white text looks on a background with the Android color 4292790469.

Color Blindness Simulation

Color vision deficiency is a very complex topic, and I could not describe the different causes any better than Wikipedia does, so if you want to learn more, you should check out their [article about color blindness](#).


Dichromacy



Original Color
4292790469

Protanopia
4292005063

Deuteranopia
4293117637



Tritanopia
4292921045

Trichromacy



Original Color
4292790469

Protanomaly
4292266950

Deuteranomaly
4292986821

Tritanomaly
4292855759

Monochromacy



Original Color
4292790469

Achromatopsia
4291743438

Achromatomaly
4292136139

CSS Examples

Text

The CSS property to change the color of the text to Android 4292790469 is called "color". The color property can be set on classes, ids or directly on the HTML element.

This example shows how text in the color `rgb(222, 200, 197)` looks like.

```
.text, #text, p{  
    color:rgb(222, 200, 197)  
}
```

If you want to add a text shadow in that color use the text-shadow property, you can generate a text shadow directly with our [CSS Text Shadow Generator](#).

Here you see how black text with a 4 pixel rgb(222, 200, 197) colored shadow looks like.

```
.shadow{ text-shadow: 4px 4px 2px rgb(222, 200, 197) }
```

Border

The CSS property to change the border of an element to Android 4292790469 is called "border". The border property can be set on classes, ids or directly on the HTML element.

This example shows the color as border, it can be applied via the CSS property "border" or "border-color".

```
.border, #border, table{ border:4px solid rgb(222, 200, 197) }
```

If only the border color should be changed use the property `border-color`.

```
.border{ border-color:rgb(222, 200, 197) }
```

If you want to add a box shadow in that color use:

Here you see how a box with a 4 pixel `rgb(222, 200, 197)` colored shadow looks like.

```
.boxshadow{ -moz-box-shadow:4px 4px 4px  
4px rgb(222, 200, 197); -webkit-box-  
shadow:4px 4px 4px 4px rgb(222, 200, 197);  
box-shadow:4px 4px 4px 4px rgb(222, 200,  
197) }
```

Background

The CSS property to change the background color of an element to Android 4292790469 is called "background". The background property can be set on classes, ids or directly on the HTML element.

```
.background, #background, body{  
background: rgb(222, 200, 197) }
```

If only the background color should be changed can be used:

```
.background{ background-color: rgb(222,  
200, 197) }
```

This example shows the color as background, it is applied via the CSS property "background".

To optimize and compress your CSS code, you can use our [online CSS compressor and optimizer](#) based on csstidy. If you want to create a linear or radial gradient as background or border, check our [CSS Gradient Generator](#).

Hey! You found this booklet interesting? Support Converting Colors with the new Membership Option!

The pro membership hides all ads, plus gives you double the colors in the color bucket, and more awesome pro features!

[Learn more, Memberships starting at \\$2.50/m!](#)

**Follow me
on Twitter!**

@ConvertingColor