

Converting Colors

Android(4292815463)

Have a look what the booklet for
Android(4292815463) contains.

| | |
|--|----|
| Android(4292815463) | 3 |
| <i>Conversions</i> | 4 |
| <i>Details</i> | 6 |
| <i>Harmonies</i> | 11 |
| <i>Previews</i> | 23 |
| <i>Color Blindness Simulation</i> | 26 |
| <i>CSS Examples</i> | 29 |

Color

Android(4292815463)

Conversions

Conversions Part 1

| Format | Color |
|---------------|----------------------------|
| Hex | DF2A67 |
| RGB | 223, 42, 103 |
| RGB Percent | 87%, 16%, 40% |
| CMY | 0.1255, 0.8353, 0.5961 |
| CMYK | 0.00, 0.81, 0.54, 0.13 |
| HSL | 340°, 74%, 52% |
| HSV | 340°, 81%, 87% |
| XYZ | 33.7076, 18.3232, 14.5921 |
| YIQ | 103.0730, 88.2950, 57.3430 |

Conversions

Conversions Part 2

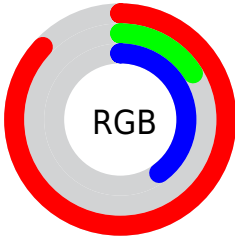
| Format | Color |
|-------------------------------------|--------------------------------|
| R_{YB} | 223, 42, 103 |
| Decimal | 14625383 |
| CIE Lab | 49.89, 69.93, 11.25 |
| CIE LCh | 50, 70.824, 9.138 |
| Yxy | 18.3232, 0.5059, 0.2750 |
| Android (android.graphics.Color) | 4292815463 (0xFFDF2A67) |
| YUV | 103.0730, -0.0360, 105.1760 |
| Hunter-Lab | 42.8056, 65.6514, 9.7524 |

Details

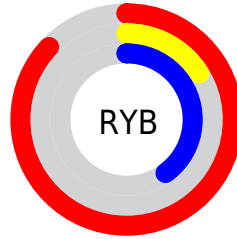
The Android color **4292815463** is a dark color, and the websafe version is hex **CC3366**. The color can be described as dark washed rose. A complement of this color would be **4280999842**, and the grayscale version is **4284966759**.

A 20% lighter version of the original color is **4294929306**, and **4288741433** is the 20% darker color. If you saturate the color by 10%, you get **4292809816**, and if you desaturate by 10%, it is **4292821110**.

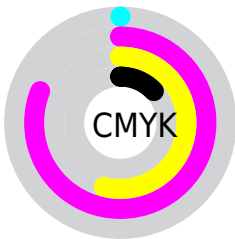
Distribution



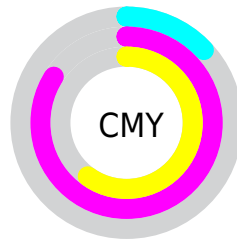
- Red (87%)
- Green (16%)
- Blue (40%)



- Red (87%)
- Yellow (16%)
- Blue (40%)



- Cyan (0%)
- Magenta (81%)
- Yellow (54%)
- Black (13%)



- Cyan (13%)
- Magenta (84%)
- Yellow (60%)

Brightness & Saturation Gradients

These gradients show how the Android color 4292815463 changes by changing the brightness by 10 percent. The first figure shows a shift by +10% for each color and the second figure -10%.

Similar to the brightness gradients but the following saturation gradients show a change of the Android color 4292815463 by changing the saturation by 10% instead.



4292815463



4292815463

4294967295



4290773071



4294929306



4288741433



4294937012



4286709796



4294944464



4284743694



4294951916



4282908676



4294959615



4280811521



4278190080



4292815463



4292815463



4292809816



4292821110

■ 4292804683

■ 4292827013

■ 4292832659

■ 4292838306

■ 4292844209

■ 4292849856

■ 4292855502

■ 4292861149

■ 4292867052

Harmonies

Analogous

The Analogous color harmony consists of three colors that are next to each other on the color wheel.



4291508899



4292815463



4292101421

Triad

The Triadic color harmony groups three colors that are evenly spaced from another and form a triangle on the color wheel.



4292815463



4282025728



4278225384

Complementary

The Complementary color scheme is a pair of colors which are on the opposite of each other on the color wheel.



4292815463



4280999842

Split Complementary

Split-complementary colors differ from the complementary color scheme. The scheme consists of three colors, the original color and two neighbors of the complement color.



4278227138



4292815463



4278226505

Square

The Square scheme is like the rectangle color scheme, but the four colors are evenly spaced on the color wheel.



4292815463



4286544384



4278227336



4278221039

Rectangle

The Rectangle color scheme consists of four colors that form a rectangle on the color wheel.



4292815463



4290730496



4278227336



4278226142

Sweetspot

The Sweet Spot groups the original color and five complimentary colors.



4292815463



4294951638



4288686815



4286602087



4278190080



4286611584

Same Dimension

The Same Dimension uses a secret algorithm to generate beautiful new colors.



4292815463



4294903899



4292822314



4285556073



4289724475



4281335824

Inverse Universe

The Inverse Universe completely reimagines the original color for something new.



4292815463



4294903899



4280992991



4285556073



4289724475



4281335824

Previews

White Background



This preview shows how the Android color 4292815463 looks on a white background.

Color Contrast Check

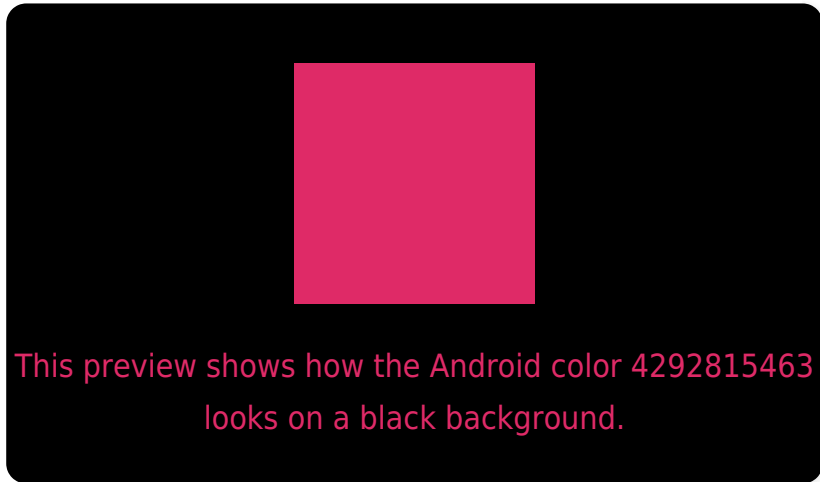
Large Text (above 18pt) WCAG AA ✓ Pass

Any Text WCAG AA ✓ Pass

Large Text (above 18pt) WCAG AAA ✓ Pass

Any Text WCAG AAA × Fail

Black Background



Color Contrast Check

Large Text (above 18pt) WCAG AA ✓ Pass

Any Text WCAG AA ✓ Pass

Large Text (above 18pt) WCAG AAA ✓ Pass

Any Text WCAG AAA × Fail

If you want to check with other color combinations, try the [Color Contrast Checker](#).

Android 4292815463 Background



This preview shows how black text looks on a background with the Android color 4292815463.



This preview shows how white text looks on a background with the Android color 4292815463.

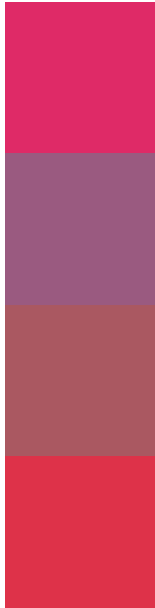
Color Blindness Simulation

Color vision deficiency is a very complex topic, and I could not describe the different causes any better than Wikipedia does, so if you want to learn more, you should check out their [article about color blindness](#).

Dichromacy



Trichromacy



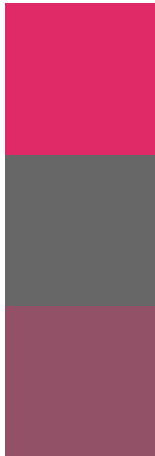
Original Color
4292815463

Protanomaly
4288305792

Deuteranomaly
4289353825

Tritanomaly
4292751945

Monochromacy



Original Color
4292815463

Achromatopsia
4284966759

Achromatomaly
4287844711

CSS Examples

Text

The CSS property to change the color of the text to Android 4292815463 is called "color". The color property can be set on classes, ids or directly on the HTML element.

This example shows how text in the color `rgb(223, 42, 103)` looks like.

```
.text, #text, p{  
    color:rgb(223, 42, 103)  
}
```

If you want to add a text shadow in that color use the text-shadow property, you can generate a text shadow directly with our [CSS Text Shadow Generator](#).

Here you see how black text with a 4 pixel rgb(223, 42, 103) colored shadow looks like.

```
.shadow{ text-shadow: 4px 4px 2px rgb(223, 42, 103) }
```

Border

The CSS property to change the border of an element to Android 4292815463 is called "border". The border property can be set on classes, ids or directly on the HTML element.

This example shows the color as border, it can be applied via the CSS property "border" or "border-color".

```
.border, #border, table{ border:4px solid rgb(223, 42, 103) }
```

If only the border color should be changed use the property `border-color`.

```
.border{ border-color:rgb(223, 42, 103) }
```

If you want to add a box shadow in that color use:

Here you see how a box with a 4 pixel `rgb(223, 42, 103)` colored shadow looks like.

```
.boxshadow{ -moz-box-shadow:4px 4px 4px  
4px rgb(223, 42, 103); -webkit-box-  
shadow:4px 4px 4px 4px rgb(223, 42, 103);  
box-shadow:4px 4px 4px 4px rgb(223, 42,  
103) }
```

Background

The CSS property to change the background color of an element to Android 4292815463 is called "background". The background property can be set on classes, ids or directly on the HTML element.

```
.background, #background, body{  
background: rgb(223, 42, 103) }
```

If only the background color should be changed can be used:

```
.background{ background-color: rgb(223, 42,  
103) }
```

This example shows the color as background, it is applied via the CSS property "background".

To optimize and compress your CSS code, you can use our [online CSS compressor and optimizer](#) based on csstidy. If you want to create a linear or radial gradient as background or border, check our [CSS Gradient Generator](#).

Hey! You found this booklet interesting? Support Converting Colors with the new Membership Option!

The pro membership hides all ads, plus gives you double the colors in the color bucket, and more awesome pro features!

[Learn more, Memberships starting at \\$2.50/m!](#)

**Follow me
on Twitter!**

@ConvertingColor