

Converting Colors

Android(4292831361)

Have a look what the booklet for
Android(4292831361) contains.

Android(4292831361)	3
<i>Conversions</i>	4
<i>Details</i>	6
<i>Harmonies</i>	11
<i>Previews</i>	23
<i>Color Blindness Simulation</i>	26
<i>CSS Examples</i>	29

Color

Android(4292831361)

Conversions

Conversions Part 1

Format	Color
Hex	DF6881
RGB	223, 104, 129
RGB Percent	87%, 41%, 51%
CMY	0.1255, 0.5922, 0.4941
CMYK	0.00, 0.53, 0.42, 0.13
HSL	347°, 65%, 64%
HSV	347°, 53%, 87%
XYZ	39.3442, 27.1736, 23.9402
YIQ	142.4310, 62.8990, 33.0030

Conversions

Conversions Part 2

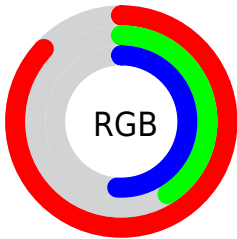
Format	Color
R_{YB}	223, 104, 129
Decimal	14641281
CIE _{Lab}	59.13, 48.78, 8.83
CIE _{LCh}	59, 49.572, 10.260
Yxy	27.1736, 0.4349, 0.3004
Android (android.graphics.Color)	4292831361 (0xFFDF6881)
YUV	142.4310, -6.6215, 70.6590
Hunter-Lab	52.1283, 43.4996, 9.2605

Details

The Android color **4292831361** is a light color, and the websafe version is hex **CC6666**. A complement of this color would be **4285063110**, and the grayscale version is **4287532686**.

A 20% lighter version of the original color is **4294942390**, and **4288950864** is the 20% darker color. If you saturate the color by 10%, you get **4292825711**, and if you desaturate by 10%, it is **4292837011**.

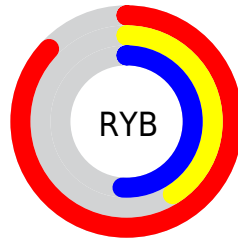
Distribution



Red (87%)

Green (41%)

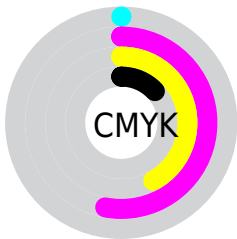
Blue (51%)



Red (87%)

Yellow (41%)

Blue (51%)

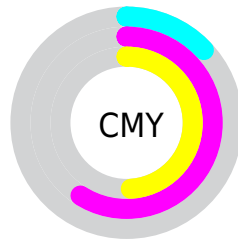


Cyan (0%)

Magenta (53%)

Yellow (42%)

Black (13%)



Cyan (13%)

Magenta (59%)

Yellow (49%)

Brightness & Saturation Gradients

These gradients show how the Android color 4292831361 changes by changing the brightness by 10 percent. The first figure shows a shift by +10% for each color and the second figure -10%.

Similar to the brightness gradients but the following saturation gradients show a change of the Android color 4292831361 by changing the saturation by 10% instead.



4292831361



4292831361

4294967295



4290858344



4294942390



4288950864



4294949585



4287042105



4294957037



4285202468



4294964479



4283367439



4281729026



4278517760



4278190080



4292831361



4292831361

 4292825711

 4292837011

 4292819806

 4292842916

 4292814156

 4292848566

 4292808507

 4292854215

 4292804655

 4292860121

 4292865771

 4292870140

 4292870143

Harmonies

Analogous

The Analogous color harmony consists of three colors that are next to each other on the color wheel.



4291784109



4292831361



4292374872

Triad

The Triadic color harmony groups three colors that are evenly spaced from another and form a triangle on the color wheel.



4292831361



4285111369



4278229984

Complementary

The Complementary color scheme is a pair of colors which are on the opposite of each other on the color wheel.



4292831361



4285063110

Split Complementary

Split-complementary colors differ from the complementary color scheme. The scheme consists of three colors, the original color and two neighbors of the complement color.



4278231749



4292831361



4279870063

Square

The Square scheme is like the rectangle color scheme, but the four colors are evenly spaced on the color wheel.



4292831361



4288254259



4278232220



4284190436

Rectangle

The Rectangle color scheme consists of four colors that form a rectangle on the color wheel.



4292831361



4291394627



4278232220



4278230745

Sweetspot

The Sweet Spot groups the original color and five complimentary colors.



4292831361



4294956767



4291127519



4286605164



4278190080



4286611584

Same Dimension

The Same Dimension uses a secret algorithm to generate beautiful new colors.



4292831361



4294925438



4292840040



4285556071



4289724453



4281335818

Inverse Universe

The Inverse Universe completely reimagines the original color for something new.



4292831361



4294925438



4285054431



4285556071



4289724453



4281335818

Previews

White Background



This preview shows how the Android color 4292831361 looks on a white background.

Color Contrast Check

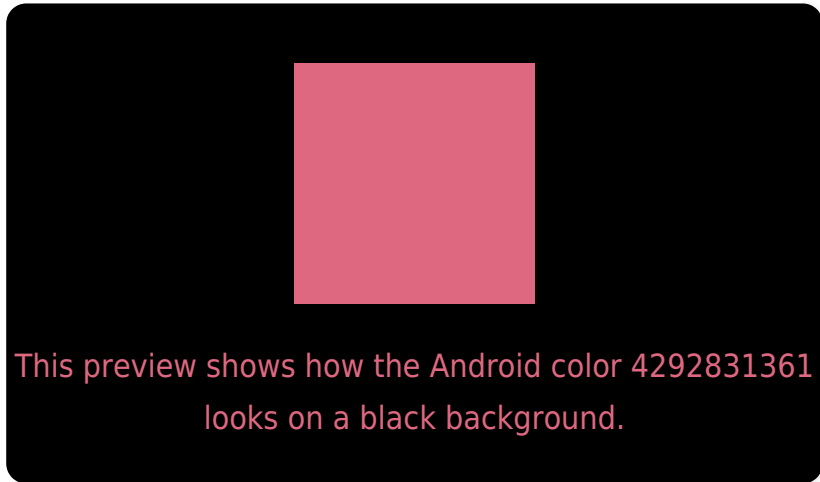
Large Text (above 18pt) WCAG AA ✓ Pass

Any Text WCAG AA ✗ Fail

Large Text (above 18pt) WCAG AAA ✗ Fail

Any Text WCAG AAA ✗ Fail

Black Background



Color Contrast Check

Large Text (above 18pt) WCAG AA ✓ Pass

Any Text WCAG AA ✓ Pass

Large Text (above 18pt) WCAG AAA ✓ Pass

Any Text WCAG AAA × Fail

If you want to check with other color combinations, try the [Color Contrast Checker](#).

Android 4292831361 Background



This preview shows how black text looks on a background with the Android color 4292831361.



This preview shows how white text looks on a background with the Android color 4292831361.

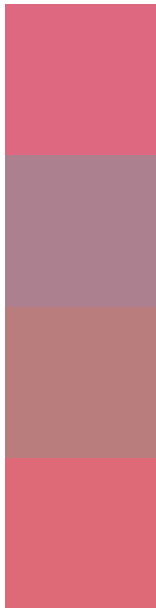
Color Blindness Simulation

Color vision deficiency is a very complex topic, and I could not describe the different causes any better than Wikipedia does, so if you want to learn more, you should check out their [article about color blindness](#).

Dichromacy



Trichromacy



Original Color
4292831361

Protanomaly
4289495182

Deuteranomaly
4290346366

Tritanomaly
4292766327

Monochromacy



Original Color
4292831361

Achromatopsia
4287532686

Achromatomaly
4289429641

CSS Examples

Text

The CSS property to change the color of the text to Android 4292831361 is called "color". The color property can be set on classes, ids or directly on the HTML element.

This example shows how text in the color `rgb(223, 104, 129)` looks like.

```
.text, #text, p{  
    color:rgb(223, 104, 129)  
}
```

If you want to add a text shadow in that color use the text-shadow property, you can generate a text shadow directly with our [CSS Text Shadow Generator](#).

Here you see how black text with a 4 pixel rgb(223, 104, 129) colored shadow looks like.

```
.shadow{ text-shadow: 4px 4px 2px rgb(223, 104, 129) }
```

Border

The CSS property to change the border of an element to Android 4292831361 is called "border". The border property can be set on classes, ids or directly on the HTML element.

This example shows the color as border, it can be applied via the CSS property "border" or "border-color".

```
.border, #border, table{ border:4px solid rgb(223, 104, 129) }
```

If only the border color should be changed use the property `border-color`.

```
.border{ border-color:rgb(223, 104, 129) }
```

If you want to add a box shadow in that color use:

Here you see how a box with a 4 pixel `rgb(223, 104, 129)` colored shadow looks like.

```
.boxshadow{ -moz-box-shadow:4px 4px 4px  
4px rgb(223, 104, 129); -webkit-box-  
shadow:4px 4px 4px 4px rgb(223, 104, 129);  
box-shadow:4px 4px 4px 4px rgb(223, 104,  
129) }
```

Background

The CSS property to change the background color of an element to Android 4292831361 is called "background". The background property can be set on classes, ids or directly on the HTML element.

```
.background, #background, body{  
background: rgb(223, 104, 129) }
```

If only the background color should be changed can be used:

```
.background{ background-color: rgb(223,  
104, 129) }
```

This example shows the color as background, it is applied via the CSS property "background".

To optimize and compress your CSS code, you can use our [online CSS compressor and optimizer](#) based on csstidy. If you want to create a linear or radial gradient as background or border, check our [CSS Gradient Generator](#).

Hey! You found this booklet interesting? Support Converting Colors with the new Membership Option!

The pro membership hides all ads, plus gives you double the colors in the color bucket, and more awesome pro features!

[Learn more, Memberships starting at \\$2.50/m!](#)

**Follow me
on Twitter!**

@ConvertingColor