

# Converting Colors

Android(4292831383)

Have a look what the booklet for  
Android(4292831383) contains.

<b>Android(4292831383)</b> .....	3
<i><b>Conversions</b></i> .....	4
<i><b>Details</b></i> .....	6
<i><b>Harmonies</b></i> .....	11
<i><b>Previews</b></i> .....	23
<i><b>Color Blindness Simulation</b></i> .....	26
<i><b>CSS Examples</b></i> .....	29

# **Color**

**Android(4292831383)**

# Conversions

## Conversions Part 1

<b>Format</b>	<b>Color</b>
Hex	DF6897
RGB	223, 104, 151
RGB Percent	87%, 41%, 59%
CMY	0.1255, 0.5922, 0.4078
CMYK	0.00, 0.53, 0.32, 0.13
HSL	336°, 65%, 64%
HSV	336°, 53%, 87%
XYZ	40.9677, 27.8230, 32.4893
YIQ	144.9390, 55.8370, 39.8450

# Conversions

## Conversions Part 2

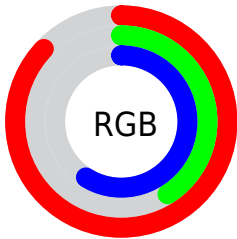
<b>Format</b>	<b>Color</b>
R <sub>Y</sub> B	223, 104, 151
Decimal	14641303
CIE Lab	59.73, 51.28, -3.08
CIE LCh	60, 51.368, 356.563
Yxy	27.8230, 0.4045, 0.2747
Android (android.graphics.Color)	4292831383 (0xFFDF6897)
YUV	144.9390, 2.9881, 68.4595
Hunter-Lab	52.7475, 46.3284, 0.4041

# Details

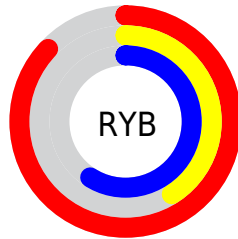
The Android color **4292831383** is a light color, and the websafe version is hex **CC6699**. A complement of this color would be **4285063088**, and the grayscale version is **4287730065**.

A 20% lighter version of the original color is **4294942669**, and **4288950628** is the 20% darker color. If you saturate the color by 10%, you get **4292825738**, and if you desaturate by 10%, it is **4292837028**.

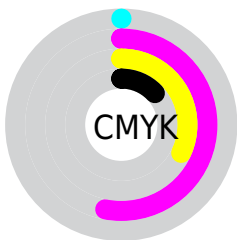
# Distribution



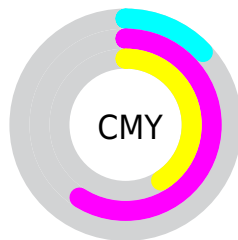
- Red (87%)
- Green (41%)
- Blue (59%)



- Red (87%)
- Yellow (41%)
- Blue (59%)



- Cyan (0%)
- Magenta (53%)
- Yellow (32%)
- Black (13%)



- Cyan (13%)
- Magenta (59%)
- Yellow (41%)

# Brightness & Saturation Gradients

These gradients show how the Android color 4292831383 changes by changing the brightness by 10 percent. The first figure shows a shift by +10% for each color and the second figure -10%.

Similar to the brightness gradients but the following saturation gradients show a change of the Android color 4292831383 by changing the saturation by 10% instead.



 4292831383

 4292831383

4294967295

 4290858365

 4294942669

 4288950628

 4294949865

 4287107148

 4294957311

 4285268022

 4294964735

 4283432993

 4281925641

 4279304192

 4278190080

 4292831383

 4292831383

 4292825738

 4292837028

 4292819836

 4292842930

 4292814191

 4292848575

 4292808545

 4292854221

 4292804696

 4292860122

 4292865768

 4292870133

 4292870143

# Harmonies

## Analogous

The Analogous color harmony consists of three colors that are next to each other on the color wheel.



4290933954



4292831383



4293028970

# Triad

The Triadic color harmony groups three colors that are evenly spaced from another and form a triangle on the color wheel.



4292831383



4286683450



4278231515

# Complementary

The Complementary color scheme is a pair of colors which are on the opposite of each other on the color wheel.



4292831383



4285063088

# Split Complementary

Split-complementary colors differ from the complementary color scheme. The scheme consists of three colors, the original color and two neighbors of the complement color.



4278232759



4292831383



4282819164

# Square

The Square scheme is like the rectangle color scheme, but the four colors are evenly spaced on the color wheel.



4292831383



4289563696



4278232713



4278228714

# Rectangle

The Rectangle color scheme consists of four colors that form a rectangle on the color wheel.



4292831383



4292375888



4278232713



4278232017



# Sweetspot

The Sweet Spot groups the original color and five complimentary colors.



4292831383



4294956774



4289685727



4286605169



4278190080



4286611584



# Same Dimension

The Same Dimension uses a secret algorithm to generate beautiful new colors.



4292831383



4294925468



4292834408



4285556073



4289724485



4281335827



# Inverse Universe

The Inverse Universe completely reimagines the original color for something new.



4292831383



4294925468



4285060063



4285556073



4289724485



4281335827



# Previews

## White Background



This preview shows how the Android color 4292831383 looks on a white background.

## Color Contrast Check

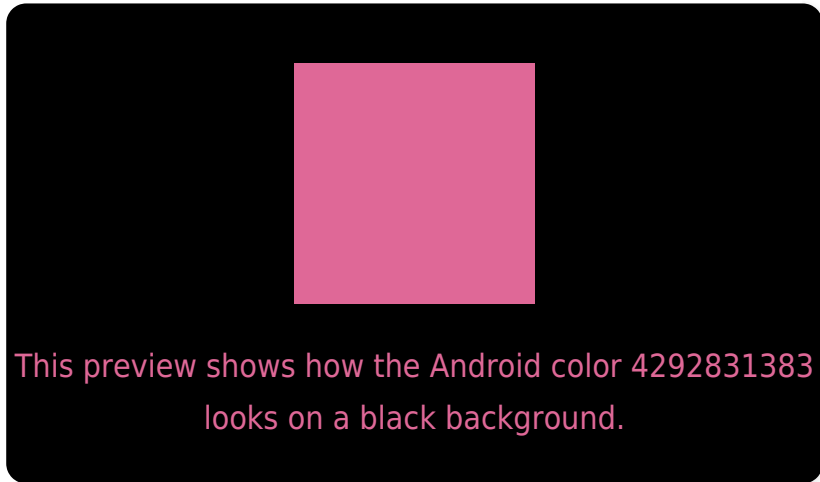
Large Text (above 18pt) WCAG AA ✓ Pass

Any Text WCAG AA ✗ Fail

Large Text (above 18pt) WCAG AAA ✗ Fail

Any Text WCAG AAA ✗ Fail

# Black Background



## Color Contrast Check

Large Text (above 18pt) WCAG AA ✓ Pass

Any Text WCAG AA ✓ Pass

Large Text (above 18pt) WCAG AAA ✓ Pass

Any Text WCAG AAA × Fail

If you want to check with other color combinations, try the [Color Contrast Checker](#).



# Android 4292831383 Background



This preview shows how black text looks on a background with the Android color 4292831383.



This preview shows how white text looks on a background with the Android color 4292831383.

# Color Blindness Simulation

Color vision deficiency is a very complex topic, and I could not describe the different causes any better than Wikipedia does, so if you want to learn more, you should check out their [article about color blindness](#).

## Dichromacy



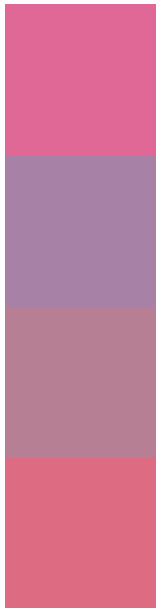
**Original Color**  
4292831383

**Protanopia**  
4287205296

**Deuteranopia**  
4288580753



# Trichromacy



**Original Color**  
4292831383

**Protanomaly**  
4289233319

**Deuteranomaly**  
4290150291

**Tritanomaly**  
4292701314

# Monochromacy



**Original Color**  
4292831383

**Achromatopsia**  
4287730065

**Achromatomaly**  
4289561235

# CSS Examples

## Text

The CSS property to change the color of the text to Android 4292831383 is called "color". The color property can be set on classes, ids or directly on the HTML element.

This example shows how text in the color `rgb(223, 104, 151)` looks like.

```
.text, #text, p{  
    color:rgb(223, 104, 151)  
}
```

If you want to add a text shadow in that color use the text-shadow property, you can generate a text shadow directly with our [CSS Text Shadow Generator](#).

Here you see how black text with a 4 pixel rgb(223, 104, 151) colored shadow looks like.

```
.shadow{ text-shadow: 4px 4px 2px rgb(223, 104, 151) }
```

## Border

The CSS property to change the border of an element to Android 4292831383 is called "border". The border property can be set on classes, ids or directly on the HTML element.

This example shows the color as border, it can be applied via the CSS property "border" or "border-color".

```
.border, #border, table{ border:4px solid rgb(223, 104, 151) }
```

If only the border color should be changed use the property `border-color`.

```
.border{ border-color:rgb(223, 104, 151) }
```

If you want to add a box shadow in that color use:

Here you see how a box with a 4 pixel `rgb(223, 104, 151)` colored shadow looks like.

```
.boxshadow{ -moz-box-shadow:4px 4px 4px  
4px rgb(223, 104, 151); -webkit-box-  
shadow:4px 4px 4px 4px rgb(223, 104, 151);  
box-shadow:4px 4px 4px 4px rgb(223, 104,  
151) }
```

# Background

The CSS property to change the background color of an element to Android 4292831383 is called "background". The background property can be set on classes, ids or directly on the HTML element.

```
.background, #background, body{  
background: rgb(223, 104, 151) }
```

If only the background color should be changed can be used:

```
.background{ background-color: rgb(223,  
104, 151) }
```

This example shows the color as background, it is applied via the CSS property "background".

To optimize and compress your CSS code, you can use our [online CSS compressor and optimizer](#) based on csstidy. If you want to create a linear or radial gradient as background or border, check our [CSS Gradient Generator](#).



Hey! You found this booklet interesting? Support Converting Colors with the new Membership Option!

The pro membership hides all ads, plus gives you double the colors in the color bucket, and more awesome pro features!

**[Learn more, Memberships starting at \\$2.50/m!](#)**

**Follow me  
on Twitter!**

@ConvertingColor