

# Converting Colors

Android(4292837772)

Have a look what the booklet for  
Android(4292837772) contains.

<b>Android(4292837772)</b> .....	3
<b><i>Conversions</i></b> .....	4
<b><i>Details</i></b> .....	6
<b><i>Harmonies</i></b> .....	11
<b><i>Previews</i></b> .....	23
<b><i>Color Blindness Simulation</i></b> .....	26
<b><i>CSS Examples</i></b> .....	29

# **Color**

**Android(4292837772)**

# Conversions

## Conversions Part 1

Format	Color
Hex	DF818C
RGB	223, 129, 140
RGB Percent	87%, 51%, 55%
CMY	0.1255, 0.4941, 0.4510
CMYK	0.00, 0.42, 0.37, 0.13
HSL	353°, 59%, 69%
HSV	353°, 42%, 87%
XYZ	43.0153, 33.2819, 28.9678
YIQ	158.3600, 52.4930, 23.3490

# Conversions

## Conversions Part 2

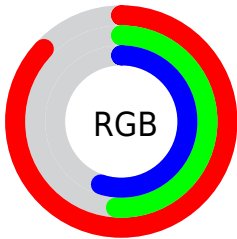
Format	Color
R <sub>Y</sub> B	223, 129, 140
Decimal	14647692
CIE Lab	64.39, 37.38, 9.97
CIE LCh	64, 38.687, 14.933
Yxy	33.2819, 0.4086, 0.3162
Android (android.graphics.Color)	4292837772 (0xFFDF818C)
YUV	158.3600, -9.0515, 56.6893
Hunter-Lab	57.6905, 32.1352, 10.6124

# Details

The Android color **4292837772** is a light color, and the websafe version is hex **FF9999**. A complement of this color would be **4286701524**, and the grayscale version is **4288585374**.

A 20% lighter version of the original color is **4294948801**, and **4289023322** is the 20% darker color. If you saturate the color by 10%, you get **4292832120**, and if you desaturate by 10%, it is **4292843424**.

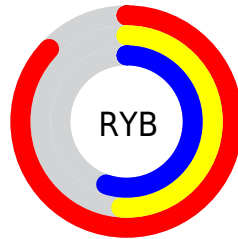
# Distribution



Red (87%)

Green (51%)

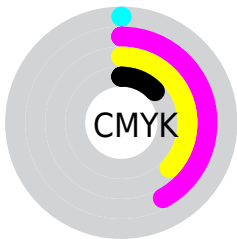
Blue (55%)



Red (87%)

Yellow (51%)

Blue (55%)

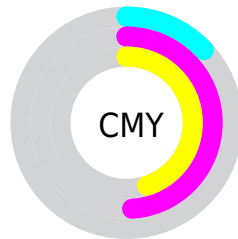


Cyan (0%)

Magenta (42%)

Yellow (37%)

Black (13%)



Cyan (13%)

Magenta (49%)

Yellow (45%)

# Brightness & Saturation Gradients

These gradients show how the Android color 4292837772 changes by changing the brightness by 10 percent. The first figure shows a shift by +10% for each color and the second figure -10%.

Similar to the brightness gradients but the following saturation gradients show a change of the Android color 4292837772 by changing the saturation by 10% instead.





4292837772



4292837772

4294967295



4290930547



4294948801



4289023322



4294955997



4287181891



4294963450



4285340461



4283564056



4281925632



4279894017



4278190080



4292837772



4292837772

 4292832120

 4292843424

 4292826213

 4292849331

 4292820561

 4292854983

 4292814909

 4292860635

 4292809258

 4292866286

 4292804634

 4292870143

# Harmonies

## Analogous

The Analogous color harmony consists of three colors that are next to each other on the color wheel.



4292117423



4292837772



4292315245

# Triad

The Triadic color harmony groups three colors that are evenly spaced from another and form a triangle on the color wheel.



4292837772



4286228586



4282688990

# Complementary

The Complementary color scheme is a pair of colors which are on the opposite of each other on the color wheel.



4292837772



4286701524

# Split Complementary

Split-complementary colors differ from the complementary color scheme. The scheme consists of three colors, the original color and two neighbors of the complement color.



4278234316



4292837772



4283215241

# Square

The Square scheme is like the rectangle color scheme, but the four colors are evenly spaced on the color wheel.



4292837772



4288782424



4278234797



4286946015

# Rectangle

The Rectangle color scheme consists of four colors that form a rectangle on the color wheel.



4292837772



4291465310



4278234797



4280723418



# Sweetspot

The Sweet Spot groups the original color and five complimentary colors.



4292837772



4294958818



4291985887



4286606189



4278190080



4286611584



# Same Dimension

The Same Dimension uses a secret algorithm to generate beautiful new colors.



4292837772



4294933900



4292846465



4285556070



4289724437



4281335814



# Inverse Universe

The Inverse Universe completely reimagines the original color for something new.



4292837772



4294933900



4286692831



4285556070



4289724437



4281335814



# Previews

## White Background



This preview shows how the Android color 4292837772 looks on a white background.

## Color Contrast Check

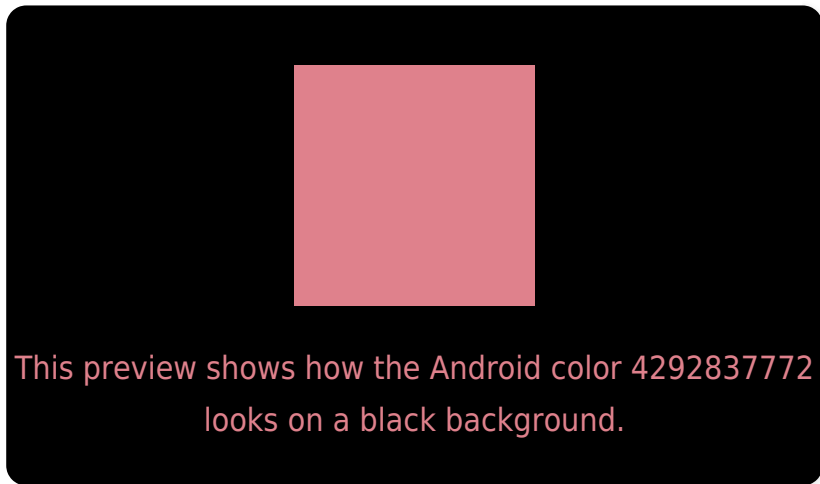
Large Text (above 18pt) WCAG AA × Fail

Any Text WCAG AA × Fail

Large Text (above 18pt) WCAG AAA × Fail

Any Text WCAG AAA × Fail

# Black Background



## Color Contrast Check

Large Text (above 18pt) WCAG AA ✓ Pass

Any Text WCAG AA ✓ Pass

Large Text (above 18pt) WCAG AAA ✓ Pass

Any Text WCAG AAA ✓ Pass

If you want to check with other color combinations, try the [Color Contrast Checker](#).



# Android 4292837772 Background



This preview shows how black text looks on a background with the Android color 4292837772.

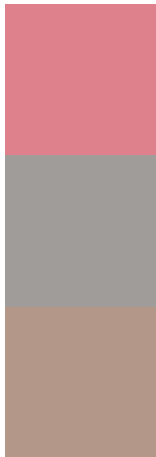


This preview shows how white text looks on a background with the Android color 4292837772.

# Color Blindness Simulation

Color vision deficiency is a very complex topic, and I could not describe the different causes any better than Wikipedia does, so if you want to learn more, you should check out their [article about color blindness](#).


## Dichromacy



**Original Color**  
4292837772

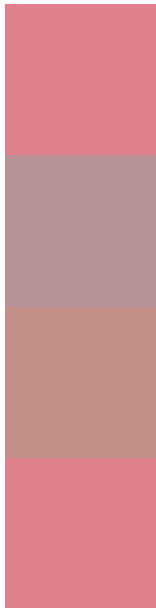
**Protanopia**  
4288715930

**Deuteranopia**  
4289959816



**Tritanopia**  
4292837771

# Trichromacy



**Original Color**  
4292837772

**Protanomaly**  
4290220693

**Deuteranomaly**  
4291006345

**Tritanomaly**  
4292837771

# Monochromacy



**Original Color**  
4292837772

**Achromatopsia**  
4288585374

**Achromatomaly**  
4290155415

# CSS Examples

## Text

The CSS property to change the color of the text to Android 4292837772 is called "color". The color property can be set on classes, ids or directly on the HTML element.

This example shows how text in the color `rgb(223, 129, 140)` looks like.

```
.text, #text, p{  
    color:rgb(223, 129, 140)  
}
```

If you want to add a text shadow in that color use the text-shadow property, you can generate a text shadow directly with our [CSS Text Shadow Generator](#).

Here you see how black text with a 4 pixel rgb(223, 129, 140) colored shadow looks like.

```
.shadow{ text-shadow: 4px 4px 2px rgb(223, 129, 140) }
```

## Border

The CSS property to change the border of an element to Android 4292837772 is called "border". The border property can be set on classes, ids or directly on the HTML element.

This example shows the color as border, it can be applied via the CSS property "border" or "border-color".

```
.border, #border, table{ border:4px solid rgb(223, 129, 140) }
```

If only the border color should be changed use the property `border-color`.

```
.border{ border-color:rgb(223, 129, 140) }
```

If you want to add a box shadow in that color use:

Here you see how a box with a 4 pixel `rgb(223, 129, 140)` colored shadow looks like.

```
.boxshadow{ -moz-box-shadow:4px 4px 4px  
4px rgb(223, 129, 140); -webkit-box-  
shadow:4px 4px 4px 4px rgb(223, 129, 140);  
box-shadow:4px 4px 4px 4px rgb(223, 129,  
140) }
```

# Background

The CSS property to change the background color of an element to Android 4292837772 is called "background". The background property can be set on classes, ids or directly on the HTML element.

```
.background, #background, body{  
background: rgb(223, 129, 140) }
```

If only the background color should be changed can be used:

```
.background{ background-color: rgb(223,  
129, 140) }
```

This example shows the color as background, it is applied via the CSS property "background".

To optimize and compress your CSS code, you can use our [online CSS compressor and optimizer](#) based on csstidy. If you want to create a linear or radial gradient as background or border, check our [CSS Gradient Generator](#).



Hey! You found this booklet interesting? Support Converting Colors with the new Membership Option!

The pro membership hides all ads, plus gives you double the colors in the color bucket, and more awesome pro features!

**[Learn more, Memberships starting at \\$2.50/m!](#)**

**Follow me  
on Twitter!**

@ConvertingColor