

Converting Colors

Android(4292840856)

Have a look what the booklet for
Android(4292840856) contains.

Android(4292840856)	3
<i>Conversions</i>	4
<i>Details</i>	6
<i>Harmonies</i>	11
<i>Previews</i>	23
<i>Color Blindness Simulation</i>	26
<i>CSS Examples</i>	29

Color

Android(4292840856)

Conversions

Conversions Part 1

Format	Color
Hex	DF8D98
RGB	223, 141, 152
RGB Percent	87%, 55%, 60%
CMY	0.1255, 0.4471, 0.4039
CMYK	0.00, 0.37, 0.32, 0.13
HSL	352°, 56%, 71%
HSV	352°, 37%, 87%
XYZ	45.6238, 37.0047, 34.4438
YIQ	166.7720, 45.3410, 20.8050

Conversions

Conversions Part 2

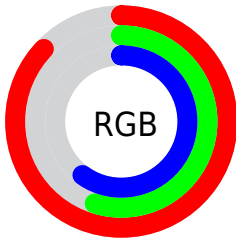
Format	Color
R _Y B	223, 141, 152
Decimal	14650776
CIE Lab	67.28, 32.52, 7.31
CIE LCh	67, 33.334, 12.673
Yxy	37.0047, 0.3897, 0.3161
Android (android.graphics.Color)	4292840856 (0xFFDF8D98)
YUV	166.7720, -7.2826, 49.3120
Hunter-Lab	60.8315, 27.4203, 9.0111

Details

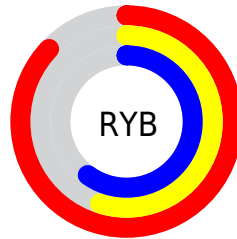
The Android color `4292840856` is a light color, and the websafe version is hex `FF9999`. A complement of this color would be `4287487956`, and the grayscale version is `4289177511`.

A 20% lighter version of the original color is `4294952142`, and `4289091941` is the 20% darker color. If you saturate the color by 10%, you get `4292835205`, and if you desaturate by 10%, it is `4292846507`.

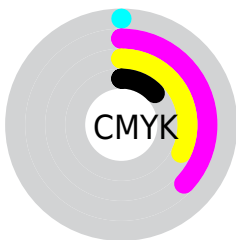
Distribution



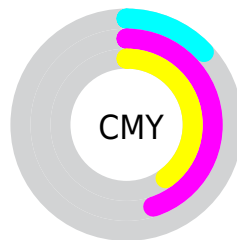
- Red (87%)
- Green (55%)
- Blue (60%)



- Red (87%)
- Yellow (55%)
- Blue (60%)



- Cyan (0%)
- Magenta (37%)
- Yellow (32%)
- Black (13%)



- Cyan (13%)
- Magenta (45%)
- Yellow (40%)

Brightness & Saturation Gradients

These gradients show how the Android color 4292840856 changes by changing the brightness by 10 percent. The first figure shows a shift by +10% for each color and the second figure -10%.

Similar to the brightness gradients but the following saturation gradients show a change of the Android color 4292840856 by changing the saturation by 10% instead.

 4292840856

 4292840856

4294967295

 4290933630

 4294952142

 4289091941

 4294959338

 4287250765

4294966783

 4285474871

 4283698977

 4282056715

 4280483841

 4278190080

 4292840856

 4292840856

 4292835205

 4292846507

 4292829297

 4292852415

 4292823646

 4292858066

 4292817995

 4292863717

 4292812343

 4292869625

 4292806436

 4292870143

 4292804638

Harmonies

Analogous

The Analogous color harmony consists of three colors that are next to each other on the color wheel.



4292120502



4292840856



4292514428

Triad

The Triadic color harmony groups three colors that are evenly spaced from another and form a triangle on the color wheel.



4292840856



4287278711



4284394716

Complementary

The Complementary color scheme is a pair of colors which are on the opposite of each other on the color wheel.



4292840856



4287487956

Split Complementary

Split-complementary colors differ from the complementary color scheme. The scheme consists of three colors, the original color and two neighbors of the complement color.



4282036940



4292840856



4284920721

Square

The Square scheme is like the rectangle color scheme, but the four colors are evenly spaced on the color wheel.



4292840856



4289439337



4282561712



4287537886

Rectangle

The Rectangle color scheme consists of four colors that form a rectangle on the color wheel.



4292840856



4291795055



4282561712



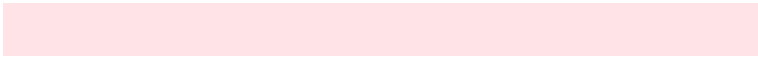
4283412184

Sweetspot

The Sweet Spot groups the original color and five complimentary colors.



4292840856



4294960103



4292054495



4286607217



4278190080



4286611584

Same Dimension

The Same Dimension uses a secret algorithm to generate beautiful new colors.



4292840856



4294938526



4292848269



4285556070



4289724440



4281335814

Inverse Universe

The Inverse Universe completely reimagines the original color for something new.



4292840856



4294938526



4287480543



4285556070



4289724440



4281335814

Previews

White Background



This preview shows how the Android color 4292840856 looks on a white background.

Color Contrast Check

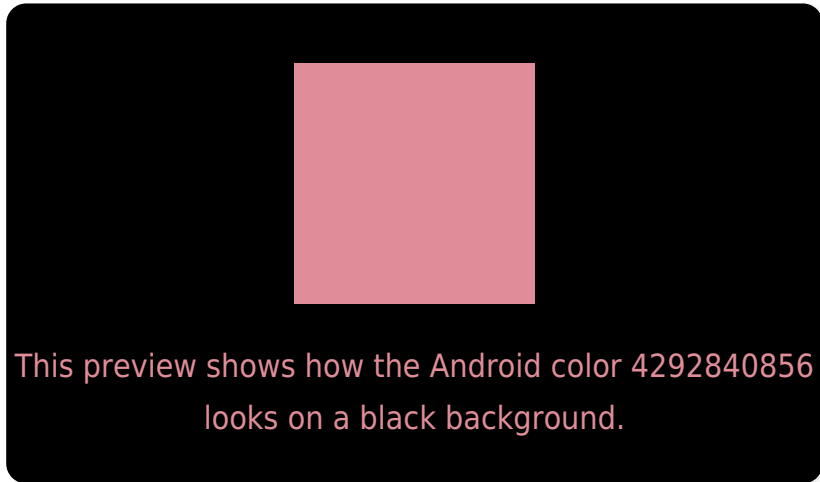
Large Text (above 18pt) WCAG AA × Fail

Any Text WCAG AA × Fail

Large Text (above 18pt) WCAG AAA × Fail

Any Text WCAG AAA × Fail

Black Background



Color Contrast Check

Large Text (above 18pt) WCAG AA ✓ Pass

Any Text WCAG AA ✓ Pass

Large Text (above 18pt) WCAG AAA ✓ Pass

Any Text WCAG AAA ✓ Pass

If you want to check with other color combinations, try the [Color Contrast Checker](#).

Android 4292840856 Background



This preview shows how black text looks on a background with the Android color 4292840856.




This preview shows how white text looks on a background with the Android color 4292840856.

Color Blindness Simulation

Color vision deficiency is a very complex topic, and I could not describe the different causes any better than Wikipedia does, so if you want to learn more, you should check out their [article about color blindness](#).

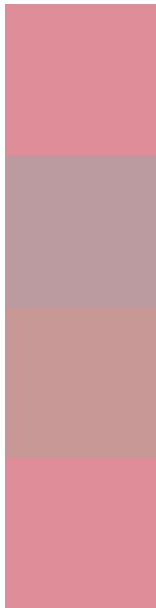
Dichromacy





Tritanopia
4292840856

Trichromacy



Original Color
4292840856

Protanomaly
4290485152

Deuteranomaly
4291270806

Tritanomaly
4292840856

Monochromacy



Original Color
4292840856

Achromatopsia
4289177511

Achromatomaly
4290485922

CSS Examples

Text

The CSS property to change the color of the text to Android 4292840856 is called "color". The color property can be set on classes, ids or directly on the HTML element.

This example shows how text in the color `rgb(223, 141, 152)` looks like.

```
.text, #text, p{  
    color:rgb(223, 141, 152)  
}
```

If you want to add a text shadow in that color use the text-shadow property, you can generate a text shadow directly with our [CSS Text Shadow Generator](#).

Here you see how black text with a 4 pixel rgb(223, 141, 152) colored shadow looks like.

```
.shadow{ text-shadow: 4px 4px 2px rgb(223, 141, 152) }
```

Border

The CSS property to change the border of an element to Android 4292840856 is called "border". The border property can be set on classes, ids or directly on the HTML element.

This example shows the color as border, it can be applied via the CSS property "border" or "border-color".

```
.border, #border, table{ border:4px solid rgb(223, 141, 152) }
```

If only the border color should be changed use the property `border-color`.

```
.border{ border-color:rgb(223, 141, 152) }
```

If you want to add a box shadow in that color use:

Here you see how a box with a 4 pixel `rgb(223, 141, 152)` colored shadow looks like.

```
.boxshadow{ -moz-box-shadow:4px 4px 4px  
4px rgb(223, 141, 152); -webkit-box-  
shadow:4px 4px 4px 4px rgb(223, 141, 152);  
box-shadow:4px 4px 4px 4px rgb(223, 141,  
152) }
```

Background

The CSS property to change the background color of an element to Android 4292840856 is called "background". The background property can be set on classes, ids or directly on the HTML element.

```
.background, #background, body{  
background: rgb(223, 141, 152) }
```

If only the background color should be changed can be used:

```
.background{ background-color: rgb(223,  
141, 152) }
```

This example shows the color as background, it is applied via the CSS property "background".

To optimize and compress your CSS code, you can use our [online CSS compressor and optimizer](#) based on csstidy. If you want to create a linear or radial gradient as background or border, check our [CSS Gradient Generator](#).

Hey! You found this booklet interesting? Support Converting Colors with the new Membership Option!

The pro membership hides all ads, plus gives you double the colors in the color bucket, and more awesome pro features!

[Learn more, Memberships starting at \\$2.50/m!](#)

**Follow me
on Twitter!**

@ConvertingColor