

Converting Colors

Android(4292841368)

Have a look what the booklet for
Android(4292841368) contains.

Android(4292841368)	3
<i>Conversions</i>	4
<i>Details</i>	6
<i>Harmonies</i>	11
<i>Previews</i>	23
<i>Color Blindness Simulation</i>	26
<i>CSS Examples</i>	29

Color

Android(4292841368)

Conversions

Conversions Part 1

Format	Color
Hex	DF8F98
RGB	223, 143, 152
RGB Percent	87%, 56%, 60%
CMY	0.1255, 0.4392, 0.4039
CMYK	0.00, 0.36, 0.32, 0.13
HSL	353°, 56%, 72%
HSV	353°, 36%, 87%
XYZ	45.9214, 37.5999, 34.5429
YIQ	167.9460, 44.7910, 19.7590

Conversions

Conversions Part 2

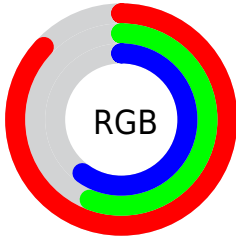
Format	Color
R _Y B	223, 143, 152
Decimal	14651288
CIE Lab	67.72, 31.46, 7.95
CIE LCh	68, 32.446, 14.180
Yxy	37.5999, 0.3890, 0.3185
Android (android.graphics.Color)	4292841368 (0xFFDF8F98)
YUV	167.9460, -7.8614, 48.2824
Hunter-Lab	61.3188, 26.3702, 9.5230

Details

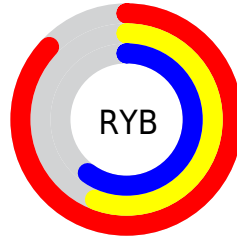
The Android color `4292841368` is a light color, and the websafe version is hex `FF9999`. A complement of this color would be `4287619030`, and the grayscale version is `4289243304`.

A 20% lighter version of the original color is `4294952654`, and `4289092453` is the 20% darker color. If you saturate the color by 10%, you get `4292835716`, and if you desaturate by 10%, it is `4292847020`.

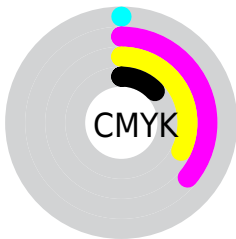
Distribution



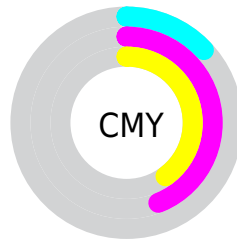
- Red (87%)
- Green (56%)
- Blue (60%)



- Red (87%)
- Yellow (56%)
- Blue (60%)



- Cyan (0%)
- Magenta (36%)
- Yellow (32%)
- Black (13%)



- Cyan (13%)
- Magenta (44%)
- Yellow (40%)

Brightness & Saturation Gradients

These gradients show how the Android color 4292841368 changes by changing the brightness by 10 percent. The first figure shows a shift by +10% for each color and the second figure -10%.

Similar to the brightness gradients but the following saturation gradients show a change of the Android color 4292841368 by changing the saturation by 10% instead.

 4292841368

 4292841368

4294967295

 4290934142

 4294952654

 4289092453

 4294959850

 4287251277

 4285475639

 4283765281

 4282056715

 4280483841

 4278190080

 4292841368

 4292841368

 4292835716

 4292847020

 4292829808

 4292852928

 4292824157

 4292858579

 4292818505

 4292864231

 4292812597

 4292870139

 4292806945

 4292870143

 4292804633

Harmonies

Analogous

The Analogous color harmony consists of three colors that are next to each other on the color wheel.



4292186550



4292841368



4292449406

Triad

The Triadic color harmony groups three colors that are evenly spaced from another and form a triangle on the color wheel.



4292841368



4287278970



4284853469

Complementary

The Complementary color scheme is a pair of colors which are on the opposite of each other on the color wheel.



4292841368



4287619030

Split Complementary

Split-complementary colors differ from the complementary color scheme. The scheme consists of three colors, the original color and two neighbors of the complement color.



4282561485



4292841368



4284986516

Square

The Square scheme is like the rectangle color scheme, but the four colors are evenly spaced on the color wheel.



4292841368



4289439852



4282889650



4287800285

Rectangle

The Rectangle color scheme consists of four colors that form a rectangle on the color wheel.



4292841368



4291730033



4282889650



4283936729

Sweetspot

The Sweet Spot groups the original color and five complimentary colors.



4292841368



4294960102



4292251615



4286607217



4278190080



4286611584

Same Dimension

The Same Dimension uses a secret algorithm to generate beautiful new colors.



4292841368



4294939038



4292849295



4285556070



4289724436



4281335813

Inverse Universe

The Inverse Universe completely reimagines the original color for something new.



4292841368



4294939038



4287611103



4285556070



4289724436



4281335813

Previews

White Background



This preview shows how the Android color 4292841368 looks on a white background.

Color Contrast Check

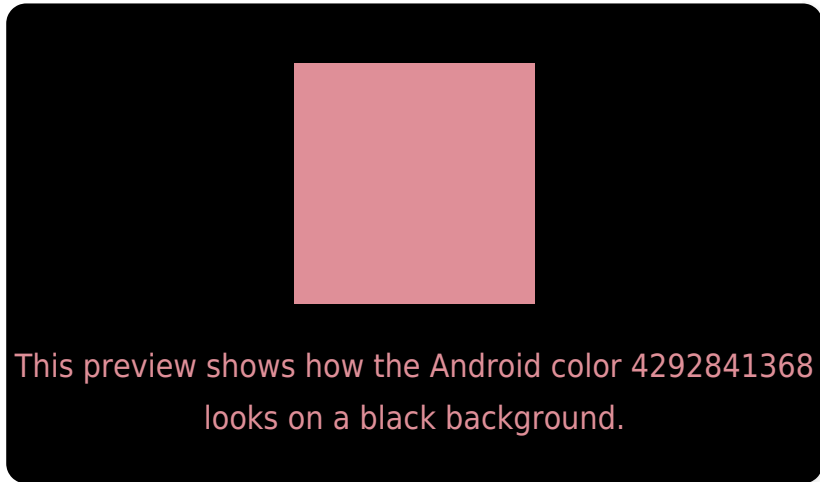
Large Text (above 18pt) WCAG AA × Fail

Any Text WCAG AA × Fail

Large Text (above 18pt) WCAG AAA × Fail

Any Text WCAG AAA × Fail

Black Background



Color Contrast Check

Large Text (above 18pt) WCAG AA ✓ Pass

Any Text WCAG AA ✓ Pass

Large Text (above 18pt) WCAG AAA ✓ Pass

Any Text WCAG AAA ✓ Pass

If you want to check with other color combinations, try the [Color Contrast Checker](#).

Android 4292841368 Background



This preview shows how black text looks on a background with the Android color 4292841368.




This preview shows how white text looks on a background with the Android color 4292841368.

Color Blindness Simulation

Color vision deficiency is a very complex topic, and I could not describe the different causes any better than Wikipedia does, so if you want to learn more, you should check out their [article about color blindness](#).

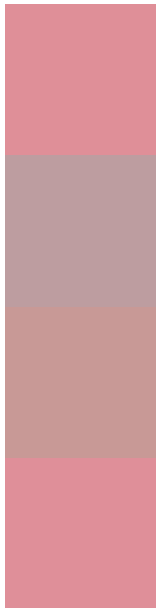
Dichromacy





Tritanopia
4292841369

Trichromacy



Original Color
4292841368

Protanomaly
4290616736

Deuteranomaly
4291336598

Tritanomaly
4292841369

Monochromacy



Original Color
4292841368

Achromatopsia
4289243304

Achromatomaly
4290551714

CSS Examples

Text

The CSS property to change the color of the text to Android 4292841368 is called "color". The color property can be set on classes, ids or directly on the HTML element.

This example shows how text in the color `rgb(223, 143, 152)` looks like.

```
.text, #text, p{  
    color:rgb(223, 143, 152)  
}
```

If you want to add a text shadow in that color use the text-shadow property, you can generate a text shadow directly with our [CSS Text Shadow Generator](#).

Here you see how black text with a 4 pixel rgb(223, 143, 152) colored shadow looks like.

```
.shadow{ text-shadow: 4px 4px 2px rgb(223, 143, 152) }
```

Border

The CSS property to change the border of an element to Android 4292841368 is called "border". The border property can be set on classes, ids or directly on the HTML element.

This example shows the color as border, it can be applied via the CSS property "border" or "border-color".

```
.border, #border, table{ border:4px solid rgb(223, 143, 152) }
```

If only the border color should be changed use the property `border-color`.

```
.border{ border-color:rgb(223, 143, 152) }
```

If you want to add a box shadow in that color use:

Here you see how a box with a 4 pixel `rgb(223, 143, 152)` colored shadow looks like.

```
.boxshadow{ -moz-box-shadow:4px 4px 4px  
4px rgb(223, 143, 152); -webkit-box-  
shadow:4px 4px 4px 4px rgb(223, 143, 152);  
box-shadow:4px 4px 4px 4px rgb(223, 143,  
152) }
```

Background

The CSS property to change the background color of an element to Android 4292841368 is called "background". The background property can be set on classes, ids or directly on the HTML element.

```
.background, #background, body{  
background: rgb(223, 143, 152) }
```

If only the background color should be changed can be used:

```
.background{ background-color: rgb(223,  
143, 152) }
```

This example shows the color as background, it is applied via the CSS property "background".

To optimize and compress your CSS code, you can use our [online CSS compressor and optimizer](#) based on csstidy. If you want to create a linear or radial gradient as background or border, check our [CSS Gradient Generator](#).

Hey! You found this booklet interesting? Support Converting Colors with the new Membership Option!

The pro membership hides all ads, plus gives you double the colors in the color bucket, and more awesome pro features!

[Learn more, Memberships starting at \\$2.50/m!](#)

**Follow me
on Twitter!**

@ConvertingColor