

Converting Colors

Android(4292849590)

Have a look what the booklet for
Android(4292849590) contains.

Android(4292849590)	3
<i>Conversions</i>	4
<i>Details</i>	6
<i>Harmonies</i>	11
<i>Previews</i>	23
<i>Color Blindness Simulation</i>	26
<i>CSS Examples</i>	29

Color

Android(4292849590)

Conversions

Conversions Part 1

Format	Color
Hex	DFAFB6
RGB	223, 175, 182
RGB Percent	87%, 69%, 71%
CMY	0.1255, 0.3137, 0.2863
CMYK	0.00, 0.22, 0.18, 0.13
HSL	351°, 43%, 78%
HSV	351°, 22%, 87%
XYZ	54.2049, 49.7253, 50.9970
YIQ	190.1500, 26.3610, 12.3530

Conversions

Conversions Part 2

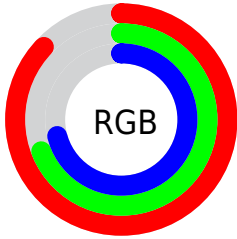
Format	Color
R_{YB}	223, 175, 182
Decimal	14659510
CIE _{Lab}	75.90, 18.52, 3.13
CIE _{LCh}	76, 18.779, 9.594
Yxy	49.7253, 0.3499, 0.3210
Android (android.graphics.Color)	4292849590 (0xFFDFAFB6)
YUV	190.1500, -4.0179, 28.8095
Hunter-Lab	70.5162, 13.8074, 6.4830

Details

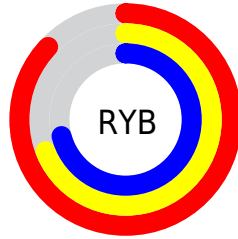
The Android color `4292849590` is a light color, and the websafe version is hex `CC9999`. A complement of this color would be `4289716184`, and the grayscale version is `4290690750`.

A 20% lighter version of the original color is `4294961134`, and `4289165953` is the 20% darker color. If you saturate the color by 10%, you get `4292843939`, and if you desaturate by 10%, it is `4292855241`.

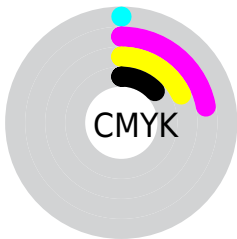
Distribution



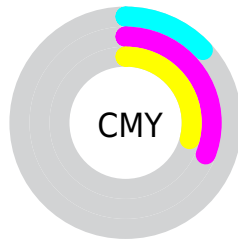
- Red (87%)
- Green (69%)
- Blue (71%)



- Red (87%)
- Yellow (69%)
- Blue (71%)



- Cyan (0%)
- Magenta (22%)
- Yellow (18%)
- Black (13%)



- Cyan (13%)
- Magenta (31%)
- Yellow (29%)

Brightness & Saturation Gradients

These gradients show how the Android color 4292849590 changes by changing the brightness by 10 percent. The first figure shows a shift by +10% for each color and the second figure -10%.

Similar to the brightness gradients but the following saturation gradients show a change of the Android color 4292849590 by changing the saturation by 10% instead.

 4292849590

 4292849590

4294967295

 4291007643

 4294961134

 4289165953

 4287390056

 4285679952

 4284035641

 4282457124

 4280944142

 4278321152

 4278190080

 4292849590

 4292849590

 4292843939

 4292855241

 4292838032

 4292861148

 4292832381

 4292866799

 4292826730

 4292870143

 4292821079

 4292815172

 4292809521

 4292804641

Harmonies

Analogous

The Analogous color harmony consists of three colors that are next to each other on the color wheel.



4292260040



4292849590



4292784550

Triad

The Triadic color harmony groups three colors that are evenly spaced from another and form a triangle on the color wheel.



4292849590



4289708448



4288331995

Complementary

The Complementary color scheme is a pair of colors which are on the opposite of each other on the color wheel.



4292849590



4289716184

Split Complementary

Split-complementary colors differ from the complementary color scheme. The scheme consists of three colors, the original color and two neighbors of the complement color.



4287546576



4292849590



4288464046

Square

The Square scheme is like the rectangle color scheme, but the four colors are evenly spaced on the color wheel.



4292849590



4291017881



4287612352



4289706973

Rectangle

The Rectangle color scheme consists of four colors that form a rectangle on the color wheel.



4292849590



4292392094



4287612352



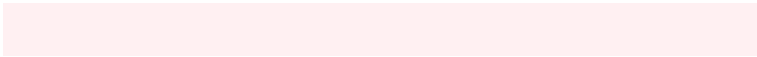
4287939288

Sweetspot

The Sweet Spot groups the original color and five complimentary colors.



4292849590



4294963442



4292390879



4286609272



4278190080



4286611584

Same Dimension

The Same Dimension uses a secret algorithm to generate beautiful new colors.



4292849590



4294950342



4292853935



4285556071



4289724442



4281335815

Inverse Universe

The Inverse Universe completely reimagines the original color for something new.



4292849590



4294950342



4289711839



4285556071



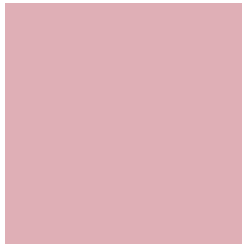
4289724442



4281335815

Previews

White Background



This preview shows how the Android color 4292849590 looks on a white background.

Color Contrast Check

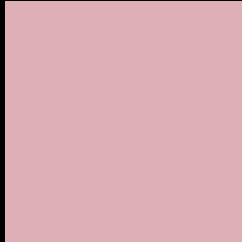
Large Text (above 18pt) WCAG AA × Fail

Any Text WCAG AA × Fail

Large Text (above 18pt) WCAG AAA × Fail

Any Text WCAG AAA × Fail

Black Background



This preview shows how the Android color 4292849590 looks on a black background.

Color Contrast Check

Large Text (above 18pt) WCAG AA ✓ Pass

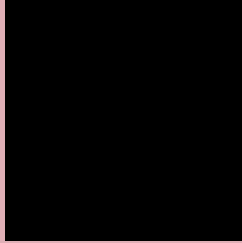
Any Text WCAG AA ✓ Pass

Large Text (above 18pt) WCAG AAA ✓ Pass

Any Text WCAG AAA ✓ Pass

If you want to check with other color combinations, try the [Color Contrast Checker](#).

Android 4292849590 Background



This preview shows how black text looks on a background with the Android color 4292849590.



This preview shows how white text looks on a background with the Android color 4292849590.

Color Blindness Simulation

Color vision deficiency is a very complex topic, and I could not describe the different causes any better than Wikipedia does, so if you want to learn more, you should check out their [article about color blindness](#).


Dichromacy



Original Color
4292849590

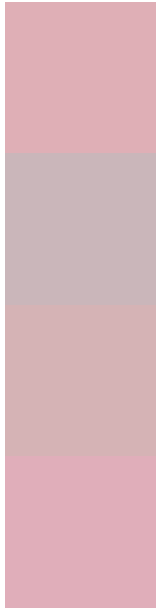
Protanopia
4290689724

Deuteranopia
4291868085



Tritanopia
4292914876

Trichromacy



Original Color
4292849590

Protanomaly
4291475130

Deuteranomaly
4292195253

Tritanomaly
4292914874

Monochromacy



Original Color
4292849590

Achromatopsia
4290690750

Achromatomaly
4291475899

CSS Examples

Text

The CSS property to change the color of the text to Android 4292849590 is called "color". The color property can be set on classes, ids or directly on the HTML element.

This example shows how text in the color `rgb(223, 175, 182)` looks like.

```
.text, #text, p{  
    color:rgb(223, 175, 182)  
}
```

If you want to add a text shadow in that color use the text-shadow property, you can generate a text shadow directly with our [CSS Text Shadow Generator](#).

Here you see how black text with a 4 pixel rgb(223, 175, 182) colored shadow looks like.

```
.shadow{ text-shadow: 4px 4px 2px rgb(223, 175, 182) }
```

Border

The CSS property to change the border of an element to Android 4292849590 is called "border". The border property can be set on classes, ids or directly on the HTML element.

This example shows the color as border, it can be applied via the CSS property "border" or "border-color".

```
.border, #border, table{ border:4px solid rgb(223, 175, 182) }
```

If only the border color should be changed use the property `border-color`.

```
.border{ border-color:rgb(223, 175, 182) }
```

If you want to add a box shadow in that color use:

Here you see how a box with a 4 pixel `rgb(223, 175, 182)` colored shadow looks like.

```
.boxshadow{ -moz-box-shadow:4px 4px 4px  
4px rgb(223, 175, 182); -webkit-box-  
shadow:4px 4px 4px 4px rgb(223, 175, 182);  
box-shadow:4px 4px 4px 4px rgb(223, 175,  
182) }
```

Background

The CSS property to change the background color of an element to Android 4292849590 is called "background". The background property can be set on classes, ids or directly on the HTML element.

```
.background, #background, body{  
background: rgb(223, 175, 182) }
```

If only the background color should be changed can be used:

```
.background{ background-color: rgb(223,  
175, 182) }
```

This example shows the color as background, it is applied via the CSS property "background".

To optimize and compress your CSS code, you can use our [online CSS compressor and optimizer](#) based on csstidy. If you want to create a linear or radial gradient as background or border, check our [CSS Gradient Generator](#).

Hey! You found this booklet interesting? Support Converting Colors with the new Membership Option!

The pro membership hides all ads, plus gives you double the colors in the color bucket, and more awesome pro features!

[Learn more, Memberships starting at \\$2.50/m!](#)

**Follow me
on Twitter!**

@ConvertingColor