

# Converting Colors

Android(4292852157)

Have a look what the booklet for  
Android(4292852157) contains.

<b>Android(4292852157)</b> .....	3
<b><i>Conversions</i></b> .....	4
<b><i>Details</i></b> .....	6
<b><i>Harmonies</i></b> .....	11
<b><i>Previews</i></b> .....	23
<b><i>Color Blindness Simulation</i></b> .....	26
<b><i>CSS Examples</i></b> .....	29

# **Color**

**Android(4292852157)**

# Conversions

## Conversions Part 1

Format	Color
Hex	DFB9BD
RGB	223, 185, 189
RGB Percent	87%, 73%, 74%
CMY	0.1255, 0.2745, 0.2588
CMYK	0.00, 0.17, 0.15, 0.13
HSL	354°, 37%, 80%
HSV	354°, 17%, 87%
XYZ	56.9657, 54.0600, 55.5763
YIQ	196.8180, 21.3640, 9.3000

# Conversions

## Conversions Part 2

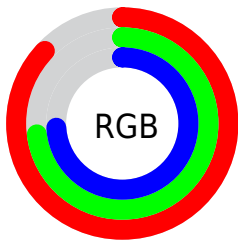
<b>Format</b>	<b>Color</b>
<b>R<sub>YB</sub></b>	223, 185, 189
Decimal	14662077
CIE <sub>Lab</sub>	78.50, 14.25, 3.09
CIE <sub>LCh</sub>	78, 14.580, 12.235
Yxy	54.0600, 0.3419, 0.3245
Android (android.graphics.Color)	4292852157 (0xFFDFB9BD)
YUV	196.8180, -3.8543, 22.9616
Hunter-Lab	73.5255, 9.6276, 6.6519

# Details

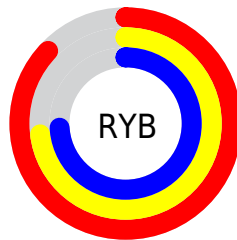
The Android color `4292852157` is a light color, and the websafe version is hex `FFCCCC`. A complement of this color would be `4290371547`, and the grayscale version is `4291151301`.

A 20% lighter version of the original color is `4294963701`, and `4289168520` is the 20% darker color. If you saturate the color by 10%, you get `4292846505`, and if you desaturate by 10%, it is `4292857809`.

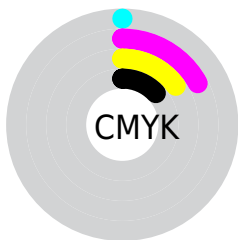
# Distribution



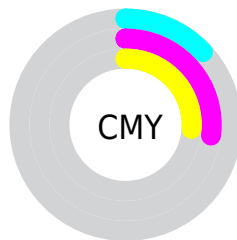
- Red (87%)
- Green (73%)
- Blue (74%)



- Red (87%)
- Yellow (73%)
- Blue (74%)



- Cyan (0%)
- Magenta (17%)
- Yellow (15%)
- Black (13%)



- Cyan (13%)
- Magenta (27%)
- Yellow (26%)

# Brightness & Saturation Gradients

These gradients show how the Android color 4292852157 changes by changing the brightness by 10 percent. The first figure shows a shift by +10% for each color and the second figure -10%.

Similar to the brightness gradients but the following saturation gradients show a change of the Android color 4292852157 by changing the saturation by 10% instead.



 4292852157

 4292852157

4294967295

 4291010210

 4294963701

 4289168520

 4287458158

 4285747798

 4284103487

 4282524969

 4281012245

 4279369728

 4278190080

 4292852157

 4292852157

 4292846505

 4292857809

 4292840597

 4292863717

 4292834945

 4292869369

 4292829293

 4292870143

 4292823641

 4292817733

 4292812081

 4292806429

 4292804631

# Harmonies

## Analogous

The Analogous color harmony consists of three colors that are next to each other on the color wheel.



4292459211



4292852157



4292721585

# Triad

The Triadic color harmony groups three colors that are evenly spaced from another and form a triangle on the color wheel.



4292852157



4290299822



4289447644

# Complementary

The Complementary color scheme is a pair of colors which are on the opposite of each other on the color wheel.



4292852157



4290371547

# Split Complementary

Split-complementary colors differ from the complementary color scheme. The scheme consists of three colors, the original color and two neighbors of the complement color.



4288793044



4292852157



4289383098

# Square

The Square scheme is like the rectangle color scheme, but the four colors are evenly spaced on the color wheel.



4292852157



4291281832



4288793287



4290494940

# Rectangle

The Rectangle color scheme consists of four colors that form a rectangle on the color wheel.



4292852157



4292394411



4288793287



4289120218



# Sweetspot

The Sweet Spot groups the original color and five complimentary colors.



4292852157



4294963956



4292590047



4286609529



4278190080



4286611584



# Same Dimension

The Same Dimension uses a secret algorithm to generate beautiful new colors.



4292852157



4294954193



4292855993



4285556070



4289724435



4281335813



# Inverse Universe

The Inverse Universe completely reimagines the original color for something new.



4292852157



4294954193



4290367711



4285556070



4289724435



4281335813



# Previews

## White Background



This preview shows how the Android color 4292852157 looks on a white background.

## Color Contrast Check

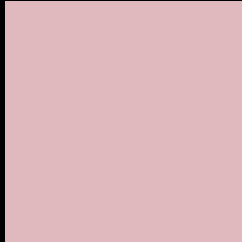
Large Text (above 18pt) WCAG AA × Fail

Any Text WCAG AA × Fail

Large Text (above 18pt) WCAG AAA × Fail

Any Text WCAG AAA × Fail

# Black Background



This preview shows how the Android color 4292852157 looks on a black background.

## Color Contrast Check

Large Text (above 18pt) WCAG AA ✓ Pass

Any Text WCAG AA ✓ Pass

Large Text (above 18pt) WCAG AAA ✓ Pass

Any Text WCAG AAA ✓ Pass

If you want to check with other color combinations, try the [Color Contrast Checker](#).



# Android 4292852157 Background



This preview shows how black text looks on a background with the Android color 4292852157.



This preview shows how white text looks on a background with the Android color 4292852157.

# Color Blindness Simulation

Color vision deficiency is a very complex topic, and I could not describe the different causes any better than Wikipedia does, so if you want to learn more, you should check out their [article about color blindness](#).

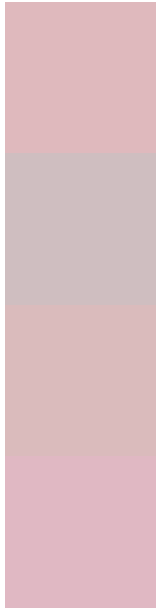
## Dichromacy





**Tritanopia**  
4292917446

# Trichromacy



**Original Color**  
4292852157

**Protanomaly**  
4291804864

**Deuteranomaly**  
4292524988

**Tritanomaly**  
4292917443

# Monochromacy



**Original Color**  
4292852157

**Achromatopsia**  
4291151301

**Achromatomaly**  
4291740098

# CSS Examples

## Text

The CSS property to change the color of the text to Android 4292852157 is called "color". The color property can be set on classes, ids or directly on the HTML element.

This example shows how text in the color `rgb(223, 185, 189)` looks like.

```
.text, #text, p{  
    color:rgb(223, 185, 189)  
}
```

If you want to add a text shadow in that color use the text-shadow property, you can generate a text shadow directly with our [CSS Text Shadow Generator](#).

Here you see how black text with a 4 pixel rgb(223, 185, 189) colored shadow looks like.

```
.shadow{ text-shadow: 4px 4px 2px rgb(223, 185, 189) }
```

## Border

The CSS property to change the border of an element to Android 4292852157 is called "border". The border property can be set on classes, ids or directly on the HTML element.

This example shows the color as border, it can be applied via the CSS property "border" or "border-color".

```
.border, #border, table{ border:4px solid rgb(223, 185, 189) }
```

If only the border color should be changed use the property `border-color`.

```
.border{ border-color:rgb(223, 185, 189) }
```

If you want to add a box shadow in that color use:

Here you see how a box with a 4 pixel `rgb(223, 185, 189)` colored shadow looks like.

```
.boxshadow{ -moz-box-shadow:4px 4px 4px  
4px rgb(223, 185, 189); -webkit-box-  
shadow:4px 4px 4px 4px rgb(223, 185, 189);  
box-shadow:4px 4px 4px 4px rgb(223, 185,  
189) }
```

# Background

The CSS property to change the background color of an element to Android 4292852157 is called "background". The background property can be set on classes, ids or directly on the HTML element.

```
.background, #background, body{  
background: rgb(223, 185, 189) }
```

If only the background color should be changed can be used:

```
.background{ background-color: rgb(223,  
185, 189) }
```

This example shows the color as background, it is applied via the CSS property "background".

To optimize and compress your CSS code, you can use our [online CSS compressor and optimizer](#) based on csstidy. If you want to create a linear or radial gradient as background or border, check our [CSS Gradient Generator](#).



Hey! You found this booklet interesting? Support Converting Colors with the new Membership Option!

The pro membership hides all ads, plus gives you double the colors in the color bucket, and more awesome pro features!

**[Learn more, Memberships starting at \\$2.50/m!](#)**

**Follow me  
on Twitter!**

@ConvertingColor