

Converting Colors

Android(4292853439)

Have a look what the booklet for
Android(4292853439) contains.

| | |
|--|----|
| Android(4292853439) | 3 |
| <i>Conversions</i> | 4 |
| <i>Details</i> | 6 |
| <i>Harmonies</i> | 11 |
| <i>Previews</i> | 23 |
| <i>Color Blindness Simulation</i> | 26 |
| <i>CSS Examples</i> | 29 |

Color

Android(4292853439)

Conversions

Conversions Part 1

| Format | Color |
|-------------|---------------------------|
| Hex | DFBEBF |
| RGB | 223, 190, 191 |
| RGB Percent | 87%, 75%, 75% |
| CMY | 0.1255, 0.2549, 0.2510 |
| CMYK | 0.00, 0.15, 0.14, 0.13 |
| HSL | 358°, 34%, 81% |
| HSV | 358°, 15%, 87% |
| XYZ | 58.2489, 56.2765, 57.0826 |
| YIQ | 199.9810, 19.3470, 7.3070 |

Conversions

Conversions Part 2

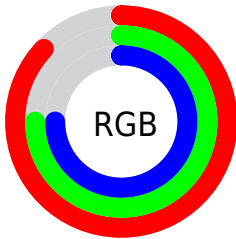
| Format | Color |
|--|---|
| RYB | 223, 190, 191 |
| Decimal | 14663359 |
| CIELab | 79.77, 11.90, 3.86 |
| CIElCh | 80, 12.507, 17.955 |
| Yxy | 56.2765, 0.3394, 0.3279 |
| Android (android.graphics.Color) | 4292853439 (0xFFDFBEBF) |
| YUV | 199.9810, -4.4276, 20.1877 |
| Hunter-Lab | 75.0176, 7.3188, 7.3973 |

Details

The Android color `4292853439` is a light color, and the websafe version is hex `FFCCCC`. A complement of this color would be `4290699230`, and the grayscale version is `4291348680`.

A 20% lighter version of the original color is `4294964983`, and `4289169802` is the 20% darker color. If you saturate the color by 10%, you get `4292847785`, and if you desaturate by 10%, it is `4292859093`.

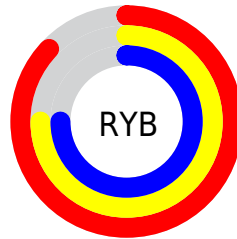
Distribution



Red (87%)

Green (75%)

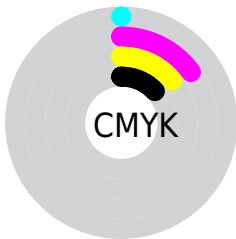
Blue (75%)



Red (87%)

Yellow (75%)

Blue (75%)

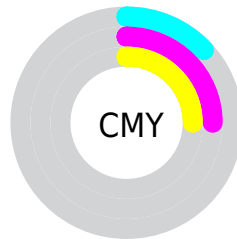


Cyan (0%)

Magenta (15%)

Yellow (14%)

Black (13%)



Cyan (13%)

Magenta (25%)

Yellow (25%)

Brightness & Saturation Gradients

These gradients show how the Android color 4292853439 changes by changing the brightness by 10 percent. The first figure shows a shift by +10% for each color and the second figure -10%.

Similar to the brightness gradients but the following saturation gradients show a change of the Android color 4292853439 by changing the saturation by 10% instead.

 4292853439

 4292853439

4294967295

 4291011492

 4294964983

 4289169802

 4287459184

 4285749080

 4284104513

 4282525995

 4281013270

 4279697408

 4278190080

 4292853439

 4292853439

 4292847785

 4292859093

 4292841876

 4292865002

 4292836222

 4292870143

 4292830569

 4292824915

 4292819005

 4292813352

 4292807698

 4292804615

Harmonies

Analogous

The Analogous color harmony consists of three colors that are next to each other on the color wheel.



4292591307



4292853439



4292657333

Triad

The Triadic color harmony groups three colors that are evenly spaced from another and form a triangle on the color wheel.



4292853439



4290431670



4290037980

Complementary

The Complementary color scheme is a pair of colors which are on the opposite of each other on the color wheel.



4292853439



4290699230

Split Complementary

Split-complementary colors differ from the complementary color scheme. The scheme consists of three colors, the original color and two neighbors of the complement color.



4289448919



4292853439



4289711296

Square

The Square scheme is like the rectangle color scheme, but the four colors are evenly spaced on the color wheel.



4292853439



4291348400



4289318348



4290954460

Rectangle

The Rectangle color scheme consists of four colors that form a rectangle on the color wheel.



4292853439



4292330160



4289318348



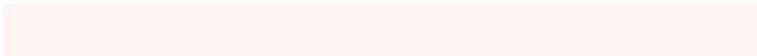
4289776091

Sweetspot

The Sweet Spot groups the original color and five complimentary colors.



4292853439



4294964725



4292787935



4286609785



4278190080



4286611584

Same Dimension

The Same Dimension uses a secret algorithm to generate beautiful new colors.



4292853439



4294955474



4292857278



4285556069



4289724421



4281335809

Inverse Universe

The Inverse Universe completely reimagines the original color for something new.



4292853439



4294955474



4290695391



4285556069



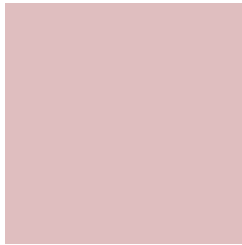
4289724421



4281335809

Previews

White Background



This preview shows how the Android color 4292853439 looks on a white background.

Color Contrast Check

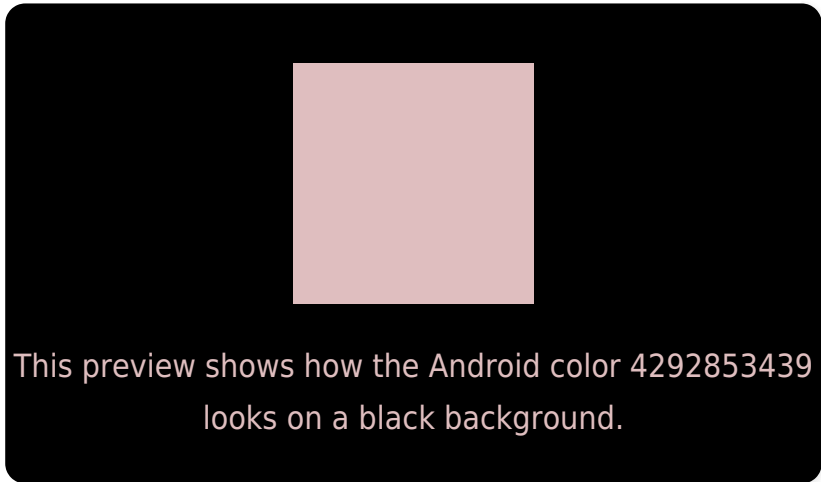
Large Text (above 18pt) WCAG AA × Fail

Any Text WCAG AA × Fail

Large Text (above 18pt) WCAG AAA × Fail

Any Text WCAG AAA × Fail

Black Background



Color Contrast Check

Large Text (above 18pt) WCAG AA ✓ Pass

Any Text WCAG AA ✓ Pass

Large Text (above 18pt) WCAG AAA ✓ Pass

Any Text WCAG AAA ✓ Pass

If you want to check with other color combinations, try the [Color Contrast Checker](#).

Android 4292853439 Background



This preview shows how black text looks on a background with the Android color 4292853439.



This preview shows how white text looks on a background with the Android color 4292853439.

Color Blindness Simulation

Color vision deficiency is a very complex topic, and I could not describe the different causes any better than Wikipedia does, so if you want to learn more, you should check out their [article about color blindness](#).

Dichromacy



Original Color
4292853439

Protanopia
4291478979

Deuteranopia
4292657087



Tritanopia
4292984011

Trichromacy



Original Color
4292853439

Protanomaly
4292002498

Deuteranomaly
4292722623

Tritanomaly
4292918727

Monochromacy



Original Color
4292853439

Achromatopsia
4291348680

Achromatomaly
4291871941

CSS Examples

Text

The CSS property to change the color of the text to Android 4292853439 is called "color". The color property can be set on classes, ids or directly on the HTML element.

This example shows how text in the color `rgb(223, 190, 191)` looks like.

```
.text, #text, p{  
    color:rgb(223, 190, 191)  
}
```

If you want to add a text shadow in that color use the text-shadow property, you can generate a text shadow directly with our [CSS Text Shadow Generator](#).

Here you see how black text with a 4 pixel rgb(223, 190, 191) colored shadow looks like.

```
.shadow{ text-shadow: 4px 4px 2px rgb(223, 190, 191) }
```

Border

The CSS property to change the border of an element to Android 4292853439 is called "border". The border property can be set on classes, ids or directly on the HTML element.

This example shows the color as border, it can be applied via the CSS property "border" or "border-color".

```
.border, #border, table{ border:4px solid rgb(223, 190, 191) }
```

If only the border color should be changed use the property `border-color`.

```
.border{ border-color:rgb(223, 190, 191) }
```

If you want to add a box shadow in that color use:

Here you see how a box with a 4 pixel `rgb(223, 190, 191)` colored shadow looks like.

```
.boxshadow{ -moz-box-shadow:4px 4px 4px  
4px rgb(223, 190, 191); -webkit-box-  
shadow:4px 4px 4px 4px rgb(223, 190, 191);  
box-shadow:4px 4px 4px 4px rgb(223, 190,  
191) }
```

Background

The CSS property to change the background color of an element to Android 4292853439 is called "background". The background property can be set on classes, ids or directly on the HTML element.

```
.background, #background, body{  
background: rgb(223, 190, 191) }
```

If only the background color should be changed can be used:

```
.background{ background-color: rgb(223,  
190, 191) }
```

This example shows the color as background, it is applied via the CSS property "background".

To optimize and compress your CSS code, you can use our [online CSS compressor and optimizer](#) based on csstidy. If you want to create a linear or radial gradient as background or border, check our [CSS Gradient Generator](#).

Hey! You found this booklet interesting? Support Converting Colors with the new Membership Option!

The pro membership hides all ads, plus gives you double the colors in the color bucket, and more awesome pro features!

[Learn more, Memberships starting at \\$2.50/m!](#)

**Follow me
on Twitter!**

@ConvertingColor