

# Converting Colors

Android(4292853698)

Have a look what the booklet for  
Android(4292853698) contains.

<b>Android(4292853698)</b> .....	3
<b><i>Conversions</i></b> .....	4
<b><i>Details</i></b> .....	6
<b><i>Harmonies</i></b> .....	11
<b><i>Previews</i></b> .....	23
<b><i>Color Blindness Simulation</i></b> .....	26
<b><i>CSS Examples</i></b> .....	29

# **Color**

**Android(4292853698)**

# Conversions

## Conversions Part 1

Format	Color
Hex	DFBFC2
RGB	223, 191, 194
RGB Percent	87%, 75%, 76%
CMY	0.1255, 0.2510, 0.2392
CMYK	0.00, 0.14, 0.13, 0.13
HSL	354°, 33%, 81%
HSV	354°, 14%, 87%
XYZ	58.7998, 56.8446, 58.9120
YIQ	200.9100, 18.1090, 7.7170

# Conversions

## Conversions Part 2

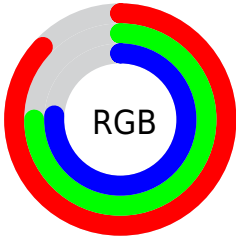
Format	Color
R <sub>Y</sub> B	223, 191, 194
Decimal	14663618
CIE Lab	80.09, 11.85, 2.70
CIE LCh	80, 12.153, 12.859
Yxy	56.8446, 0.3369, 0.3257
Android (android.graphics.Color)	4292853698 (0xFFDFBFC2)
YUV	200.9100, -3.4066, 19.3729
Hunter-Lab	75.3954, 7.2678, 6.4491

# Details

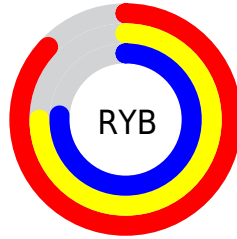
The Android color `4292853698` is a light color, and the websafe version is hex `FFCCCC`. A complement of this color would be `4290764764`, and the grayscale version is `4291414473`.

A 20% lighter version of the original color is `4294965242`, and `4289235596` is the 20% darker color. If you saturate the color by 10%, you get `4292848046`, and if you desaturate by 10%, it is `4292859350`.

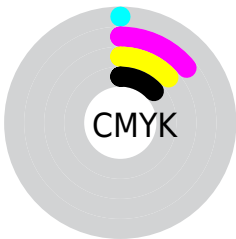
# Distribution



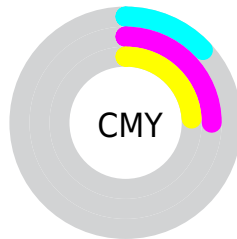
- Red (87%)
- Green (75%)
- Blue (76%)



- Red (87%)
- Yellow (75%)
- Blue (76%)



- Cyan (0%)
- Magenta (14%)
- Yellow (13%)
- Black (13%)



- Cyan (13%)
- Magenta (25%)
- Yellow (24%)

# Brightness & Saturation Gradients

These gradients show how the Android color 4292853698 changes by changing the brightness by 10 percent. The first figure shows a shift by +10% for each color and the second figure -10%.

Similar to the brightness gradients but the following saturation gradients show a change of the Android color 4292853698 by changing the saturation by 10% instead.



 4292853698

 4292853698

4294967295

 4291011751

 4294965242

 4289235596

 4287459443

 4285749338

 4284104771

 4282526253

 4281079064

 4279828480

 4278190080

 4292853698

 4292853698

 4292848046

 4292859350

 4292842138

 4292865258

 4292836485

 4292870143

 4292830833

 4292825181

 4292819273

 4292813621

 4292807968

 4292804629

# Harmonies

## Analogous

The Analogous color harmony consists of three colors that are next to each other on the color wheel.



4292526286



4292853698



4292788664

# Triad

The Triadic color harmony groups three colors that are evenly spaced from another and form a triangle on the color wheel.



4292853698



4290694070



4290038492

# Complementary

The Complementary color scheme is a pair of colors which are on the opposite of each other on the color wheel.



4292853698



4290764764

# Split Complementary

Split-complementary colors differ from the complementary color scheme. The scheme consists of three colors, the original color and two neighbors of the complement color.



4289449174



4292853698



4289908160

# Square

The Square scheme is like the rectangle color scheme, but the four colors are evenly spaced on the color wheel.



4292853698



4291545009



4289449419



4290889437

# Rectangle

The Rectangle color scheme consists of four colors that form a rectangle on the color wheel.



4292853698



4292461235



4289449419



4289776602

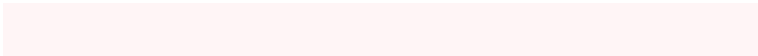


# Sweetspot

The Sweet Spot groups the original color and five complimentary colors.



4292853698



4294964726



4292657119



4286609786



4278190080



4286611584



# Same Dimension

The Same Dimension uses a secret algorithm to generate beautiful new colors.



4292853698



4294956248



4292857023



4285556070



4289724432



4281335813



# Inverse Universe

The Inverse Universe completely reimagines the original color for something new.



4292853698



4294956248



4290761439



4285556070



4289724432

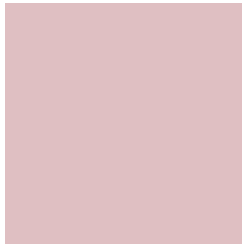


4281335813



# Previews

## White Background



This preview shows how the Android color 4292853698 looks on a white background.

## Color Contrast Check

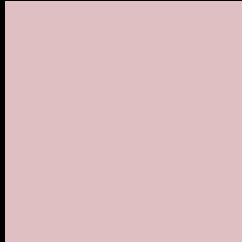
Large Text (above 18pt) WCAG AA × Fail

Any Text WCAG AA × Fail

Large Text (above 18pt) WCAG AAA × Fail

Any Text WCAG AAA × Fail

# Black Background



This preview shows how the Android color 4292853698 looks on a black background.

## Color Contrast Check

Large Text (above 18pt) WCAG AA ✓ Pass

Any Text WCAG AA ✓ Pass

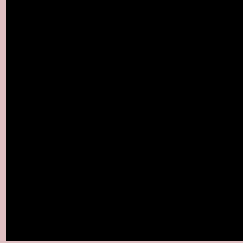
Large Text (above 18pt) WCAG AAA ✓ Pass

Any Text WCAG AAA ✓ Pass

If you want to check with other color combinations, try the [Color Contrast Checker](#).



# Android 4292853698 Background



This preview shows how black text looks on a background with the Android color 4292853698.




This preview shows how white text looks on a background with the Android color 4292853698.

# Color Blindness Simulation

Color vision deficiency is a very complex topic, and I could not describe the different causes any better than Wikipedia does, so if you want to learn more, you should check out their [article about color blindness](#).

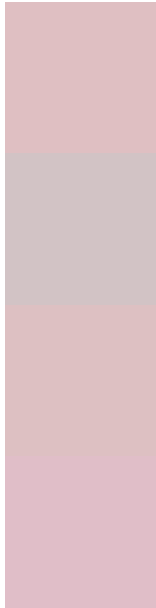
## Dichromacy





**Tritanopia**  
4292918732

# Trichromacy



**Original Color**  
4292853698

**Protanomaly**  
4292002757

**Deuteranomaly**  
4292722882

**Tritanomaly**  
4292918984

# Monochromacy



**Original Color**  
4292853698

**Achromatopsia**  
4291414473

**Achromatomaly**  
4291937734

# CSS Examples

## Text

The CSS property to change the color of the text to Android 4292853698 is called "color". The color property can be set on classes, ids or directly on the HTML element.

This example shows how text in the color `rgb(223, 191, 194)` looks like.

```
.text, #text, p{  
    color:rgb(223, 191, 194)  
}
```

If you want to add a text shadow in that color use the text-shadow property, you can generate a text shadow directly with our [CSS Text Shadow Generator](#).

Here you see how black text with a 4 pixel rgb(223, 191, 194) colored shadow looks like.

```
.shadow{ text-shadow: 4px 4px 2px rgb(223, 191, 194) }
```

## Border

The CSS property to change the border of an element to Android 4292853698 is called "border". The border property can be set on classes, ids or directly on the HTML element.

This example shows the color as border, it can be applied via the CSS property "border" or "border-color".

```
.border, #border, table{ border:4px solid rgb(223, 191, 194) }
```

If only the border color should be changed use the property border-color.

```
.border{ border-color:rgb(223, 191, 194) }
```

If you want to add a box shadow in that color use:

Here you see how a box with a 4 pixel rgb(223, 191, 194) colored shadow looks like.

```
.boxshadow{ -moz-box-shadow:4px 4px 4px  
4px rgb(223, 191, 194); -webkit-box-  
shadow:4px 4px 4px 4px rgb(223, 191, 194);  
box-shadow:4px 4px 4px 4px rgb(223, 191,  
194) }
```

# Background

The CSS property to change the background color of an element to Android 4292853698 is called "background". The background property can be set on classes, ids or directly on the HTML element.

```
.background, #background, body{  
background: rgb(223, 191, 194) }
```

If only the background color should be changed can be used:

```
.background{ background-color: rgb(223,  
191, 194) }
```

This example shows the color as background, it is applied via the CSS property "background".

To optimize and compress your CSS code, you can use our [online CSS compressor and optimizer](#) based on csstidy. If you want to create a linear or radial gradient as background or border, check our [CSS Gradient Generator](#).



Hey! You found this booklet interesting? Support Converting Colors with the new Membership Option!

The pro membership hides all ads, plus gives you double the colors in the color bucket, and more awesome pro features!

**[Learn more, Memberships starting at \\$2.50/m!](#)**

**Follow me  
on Twitter!**

@ConvertingColor