

Converting Colors

Android(4292853959)

Have a look what the booklet for
Android(4292853959) contains.

Android(4292853959)	3
<i>Conversions</i>	4
<i>Details</i>	6
<i>Harmonies</i>	11
<i>Previews</i>	23
<i>Color Blindness Simulation</i>	26
<i>CSS Examples</i>	29

Color

Android(4292853959)

Conversions

Conversions Part 1

Format	Color
Hex	DFC0C7
RGB	223, 192, 199
RGB Percent	87%, 75%, 78%
CMY	0.1255, 0.2471, 0.2196
CMYK	0.00, 0.14, 0.11, 0.13
HSL	346°, 33%, 81%
HSV	346°, 14%, 87%
XYZ	59.5899, 57.5108, 61.9928
YIQ	202.0670, 16.2290, 8.7490

Conversions

Conversions Part 2

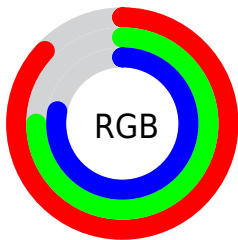
Format	Color
R _Y B	223, 192, 199
Decimal	14663879
CIE Lab	80.47, 12.14, 0.56
CIE LCh	80, 12.149, 2.626
Yxy	57.5108, 0.3327, 0.3211
Android (android.graphics.Color)	4292853959 (0xFFDFC0C7)
YUV	202.0670, -1.5120, 18.3582
Hunter-Lab	75.8359, 7.5480, 4.6179

Details

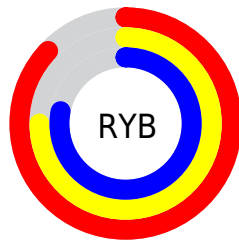
The Android color `4292853959` is a light color, and the websafe version is hex `FFCCCC`. A complement of this color would be `4290830296`, and the grayscale version is `4291480266`.

A 20% lighter version of the original color is `4294965503`, and `4289235601` is the 20% darker color. If you saturate the color by 10%, you get `4292848310`, and if you desaturate by 10%, it is `4292859608`.

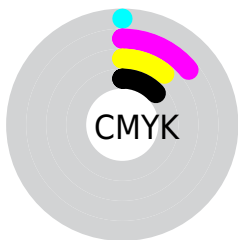
Distribution



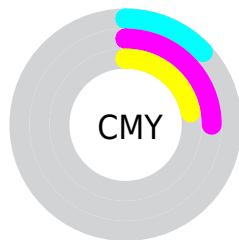
- Red (87%)
- Green (75%)
- Blue (78%)



- Red (87%)
- Yellow (75%)
- Blue (78%)



- Cyan (0%)
- Magenta (14%)
- Yellow (11%)
- Black (13%)



- Cyan (13%)
- Magenta (25%)
- Yellow (22%)

Brightness & Saturation Gradients

These gradients show how the Android color 4292853959 changes by changing the brightness by 10 percent. The first figure shows a shift by +10% for each color and the second figure -10%.

Similar to the brightness gradients but the following saturation gradients show a change of the Android color 4292853959 by changing the saturation by 10% instead.

 4292853959

 4292853959

4294967295

 4291012012

 4294965503


 4289235601

 4287459704

 4285749343

 4284105031

 4282592049

 4281079324

 4279894017

 4278190080

 4292853959

 4292853959

 4292848310

 4292859608

 4292842404

 4292865514

 4292836755

 4292870139

 4292831106

 4292870143

 4292825457

 4292819551

 4292813902

 4292808253

 4292804658

Harmonies

Analogous

The Analogous color harmony consists of three colors that are next to each other on the color wheel.



4292395474



4292853959



4292919740

Triad

The Triadic color harmony groups three colors that are evenly spaced from another and form a triangle on the color wheel.



4292853959



4291021748



4289842395

Complementary

The Complementary color scheme is a pair of colors which are on the opposite of each other on the color wheel.



4292853959



4290830296

Split Complementary

Split-complementary colors differ from the complementary color scheme. The scheme consists of three colors, the original color and two neighbors of the complement color.



4289449683



4292853959



4290235837

Square

The Square scheme is like the rectangle color scheme, but the four colors are evenly spaced on the color wheel.



4292853959



4291872689



4289646280



4290627806

Rectangle

The Rectangle color scheme consists of four colors that form a rectangle on the color wheel.



4292853959



4292723382



4289646280



4289646041

Sweetspot

The Sweet Spot groups the original color and five complimentary colors.



4292853959



4294964727



4292395231



4286609787



4278190080



4286611584

Same Dimension

The Same Dimension uses a secret algorithm to generate beautiful new colors.



4292853959



4294956253



4292856000



4285556072



4289724456



4281335819

Inverse Universe

The Inverse Universe completely reimagines the original color for something new.



4292853959



4294956253



4290828255



4285556072



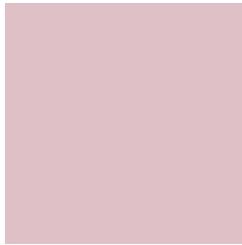
4289724456



4281335819

Previews

White Background



This preview shows how the Android color 4292853959 looks on a white background.

Color Contrast Check

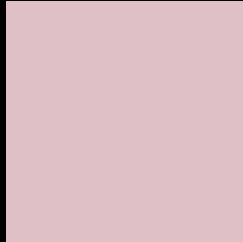
Large Text (above 18pt) WCAG AA × Fail

Any Text WCAG AA × Fail

Large Text (above 18pt) WCAG AAA × Fail

Any Text WCAG AAA × Fail

Black Background



This preview shows how the Android color 4292853959 looks on a black background.

Color Contrast Check

Large Text (above 18pt) WCAG AA ✓ Pass

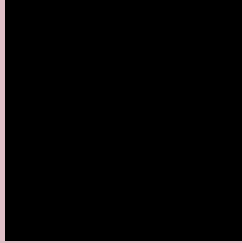
Any Text WCAG AA ✓ Pass

Large Text (above 18pt) WCAG AAA ✓ Pass

Any Text WCAG AAA ✓ Pass

If you want to check with other color combinations, try the [Color Contrast Checker](#).

Android 4292853959 Background



This preview shows how black text looks on a background with the Android color 4292853959.




This preview shows how white text looks on a background with the Android color 4292853959.

Color Blindness Simulation

Color vision deficiency is a very complex topic, and I could not describe the different causes any better than Wikipedia does, so if you want to learn more, you should check out their [article about color blindness](#).

Dichromacy





Tritanopia
4292919246

Trichromacy



Original Color
4292853959

Protanomaly
4292003018

Deuteranomaly
4292657607

Tritanomaly
4292919243

Monochromacy



Original Color
4292853959

Achromatopsia
4291480266

Achromatomaly
4292003529

CSS Examples

Text

The CSS property to change the color of the text to Android 4292853959 is called "color". The color property can be set on classes, ids or directly on the HTML element.

This example shows how text in the color `rgb(223, 192, 199)` looks like.

```
.text, #text, p{  
    color:rgb(223, 192, 199)  
}
```

If you want to add a text shadow in that color use the text-shadow property, you can generate a text shadow directly with our [CSS Text Shadow Generator](#).

Here you see how black text with a 4 pixel rgb(223, 192, 199) colored shadow looks like.

```
.shadow{ text-shadow: 4px 4px 2px rgb(223, 192, 199) }
```

Border

The CSS property to change the border of an element to Android 4292853959 is called "border". The border property can be set on classes, ids or directly on the HTML element.

This example shows the color as border, it can be applied via the CSS property "border" or "border-color".

```
.border, #border, table{ border:4px solid rgb(223, 192, 199) }
```

If only the border color should be changed use the property `border-color`.

```
.border{ border-color:rgb(223, 192, 199) }
```

If you want to add a box shadow in that color use:

Here you see how a box with a 4 pixel `rgb(223, 192, 199)` colored shadow looks like.

```
.boxshadow{ -moz-box-shadow:4px 4px 4px  
4px rgb(223, 192, 199); -webkit-box-  
shadow:4px 4px 4px 4px rgb(223, 192, 199);  
box-shadow:4px 4px 4px 4px rgb(223, 192,  
199) }
```

Background

The CSS property to change the background color of an element to Android 4292853959 is called "background". The background property can be set on classes, ids or directly on the HTML element.

```
.background, #background, body{  
background: rgb(223, 192, 199) }
```

If only the background color should be changed can be used:

```
.background{ background-color: rgb(223,  
192, 199) }
```

This example shows the color as background, it is applied via the CSS property "background".

To optimize and compress your CSS code, you can use our [online CSS compressor and optimizer](#) based on csstidy. If you want to create a linear or radial gradient as background or border, check our [CSS Gradient Generator](#).

Hey! You found this booklet interesting? Support Converting Colors with the new Membership Option!

The pro membership hides all ads, plus gives you double the colors in the color bucket, and more awesome pro features!

[Learn more, Memberships starting at \\$2.50/m!](#)

**Follow me
on Twitter!**

@ConvertingColor