

Converting Colors

Android(4292854182)

Have a look what the booklet for
Android(4292854182) contains.

Android(4292854182)	3
<i>Conversions</i>	4
<i>Details</i>	6
<i>Harmonies</i>	11
<i>Previews</i>	23
<i>Color Blindness Simulation</i>	26
<i>CSS Examples</i>	29

Color

Android(4292854182)

Conversions

Conversions Part 1

Format	Color
Hex	DFC1A6
RGB	223, 193, 166
RGB Percent	87%, 76%, 65%
CMY	0.1255, 0.2431, 0.3490
CMYK	0.00, 0.13, 0.26, 0.13
HSL	28°, 47%, 76%
HSV	28°, 26%, 87%
XYZ	56.3843, 56.5811, 44.0259
YIQ	198.8920, 26.5470, -2.0370

Conversions

Conversions Part 2

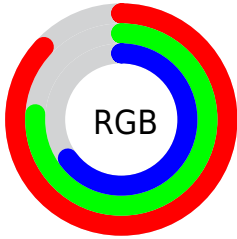
Format	Color
RYB	223, 217, 166
Decimal	14664102
CIELab	79.94, 6.57, 17.53
CIELCh	80, 18.720, 69.440
Yxy	56.5811, 0.3592, 0.3604
Android (android.graphics.Color)	4292854182 (0xFFDFC1A6)
YUV	198.8920, -16.2158, 21.1427
Hunter-Lab	75.2204, 2.1658, 17.9523

Details

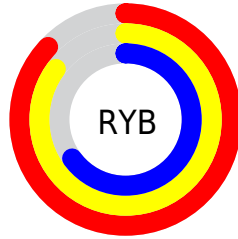
The Android color `4292854182` is a light color, and the websafe version is hex `FFCC99`. A complement of this color would be `4289119455`, and the grayscale version is `4291282887`.

A 20% lighter version of the original color is `4294965725`, and `4289170546` is the 20% darker color. If you saturate the color by 10%, you get `4292851088`, and if you desaturate by 10%, it is `4292857276`.

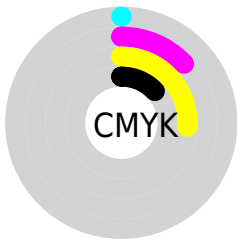
Distribution



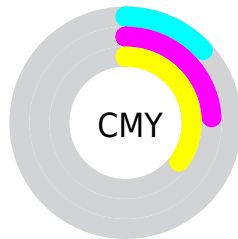
- Red (87%)
- Green (76%)
- Blue (65%)



- Red (87%)
- Yellow (85%)
- Blue (65%)



- Cyan (0%)
- Magenta (13%)
- Yellow (26%)
- Black (13%)



- Cyan (13%)
- Magenta (24%)
- Yellow (35%)

Brightness & Saturation Gradients

These gradients show how the Android color 4292854182 changes by changing the brightness by 10 percent. The first figure shows a shift by +10% for each color and the second figure -10%.

Similar to the brightness gradients but the following saturation gradients show a change of the Android color 4292854182 by changing the saturation by 10% instead.



4292854182



4292854182

4294967295



4291012236



4294965725



4289170546



4294967290



4287394393



4285684290



4284039724



4282461207



4281014016



4279238656



4278190080

 4292854182

 4292854182

 4292851088

 4292857276

 4292848249

 4292860115

 4292845155

 4292863209

 4292842061

 4292866303

 4292838967

 4292869375

 4292836128

 4292870143

 4292833034

 4292831744

Harmonies

Analogous

The Analogous color harmony consists of three colors that are next to each other on the color wheel.



4293508273



4292854182



4291741604

Triad

The Triadic color harmony groups three colors that are evenly spaced from another and form a triangle on the color wheel.



4292854182



4288336075



4291870945

Complementary

The Complementary color scheme is a pair of colors which are on the opposite of each other on the color wheel.



4292854182



4289119455

Split Complementary

Split-complementary colors differ from the complementary color scheme. The scheme consists of three colors, the original color and two neighbors of the complement color.



4290430696



4292854182



4288270300

Square

The Square scheme is like the rectangle color scheme, but the four colors are evenly spaced on the color wheel.



4292854182



4289187769



4289055718



4293049555

Rectangle

The Rectangle color scheme consists of four colors that form a rectangle on the color wheel.



4292854182



4290890408



4289055718



4291412709

Sweetspot

The Sweet Spot groups the original color and five complimentary colors.



4292854182



4294964459



4292847300



4286609779



4278190080



4286611584

Same Dimension

The Same Dimension uses a secret algorithm to generate beautiful new colors.



4292854182



4294956464



4292861350



4285557349



4289745664



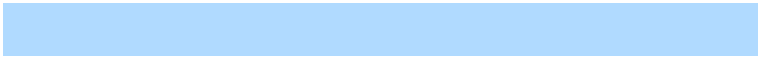
4281341696

Inverse Universe

The Inverse Universe completely reimagines the original color for something new.



4289119455



4289780479



4289112287



4284836720



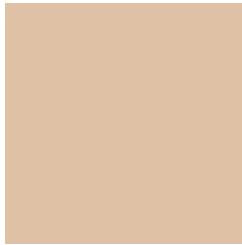
4278214064



4278196784

Previews

White Background



This preview shows how the Android color 4292854182 looks on a white background.

Color Contrast Check

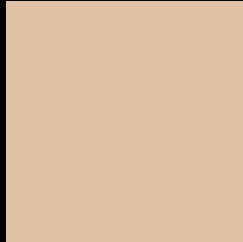
Large Text (above 18pt) WCAG AA × Fail

Any Text WCAG AA × Fail

Large Text (above 18pt) WCAG AAA × Fail

Any Text WCAG AAA × Fail

Black Background



This preview shows how the Android color 4292854182 looks on a black background.

Color Contrast Check

Large Text (above 18pt) WCAG AA ✓ Pass

Any Text WCAG AA ✓ Pass

Large Text (above 18pt) WCAG AAA ✓ Pass

Any Text WCAG AAA ✓ Pass

If you want to check with other color combinations, try the [Color Contrast Checker](#).

Android 4292854182 Background



This preview shows how black text looks on a background with the Android color 4292854182.



This preview shows how white text looks on a background with the Android color 4292854182.

Color Blindness Simulation

Color vision deficiency is a very complex topic, and I could not describe the different causes any better than Wikipedia does, so if you want to learn more, you should check out their [article about color blindness](#).

Dichromacy





Tritanopia
4293115082

Trichromacy



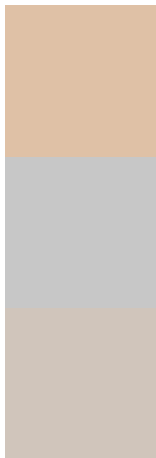
Original Color
4292854182

Protanomaly
4292265127

Deuteranomaly
4293116070

Tritanomaly
4293050045

Monochromacy



Original Color
4292854182

Achromatopsia
4291282887

Achromatomaly
4291872187

CSS Examples

Text

The CSS property to change the color of the text to Android 4292854182 is called "color". The color property can be set on classes, ids or directly on the HTML element.

This example shows how text in the color `rgb(223, 193, 166)` looks like.

```
.text, #text, p{  
    color:rgb(223, 193, 166)  
}
```

If you want to add a text shadow in that color use the text-shadow property, you can generate a text shadow directly with our [CSS Text Shadow Generator](#).

Here you see how black text with a 4 pixel rgb(223, 193, 166) colored shadow looks like.

```
.shadow{ text-shadow: 4px 4px 2px rgb(223, 193, 166) }
```

Border

The CSS property to change the border of an element to Android 4292854182 is called "border". The border property can be set on classes, ids or directly on the HTML element.

This example shows the color as border, it can be applied via the CSS property "border" or "border-color".

```
.border, #border, table{ border:4px solid rgb(223, 193, 166) }
```

If only the border color should be changed use the property `border-color`.

```
.border{ border-color:rgb(223, 193, 166) }
```

If you want to add a box shadow in that color use:

Here you see how a box with a 4 pixel `rgb(223, 193, 166)` colored shadow looks like.

```
.boxshadow{ -moz-box-shadow:4px 4px 4px  
4px rgb(223, 193, 166); -webkit-box-  
shadow:4px 4px 4px 4px rgb(223, 193, 166);  
box-shadow:4px 4px 4px 4px rgb(223, 193,  
166) }
```

Background

The CSS property to change the background color of an element to Android 4292854182 is called "background". The background property can be set on classes, ids or directly on the HTML element.

```
.background, #background, body{  
background: rgb(223, 193, 166) }
```

If only the background color should be changed can be used:

```
.background{ background-color: rgb(223,  
193, 166) }
```

This example shows the color as background, it is applied via the CSS property "background".

To optimize and compress your CSS code, you can use our [online CSS compressor and optimizer](#) based on csstidy. If you want to create a linear or radial gradient as background or border, check our [CSS Gradient Generator](#).

Hey! You found this booklet interesting? Support Converting Colors with the new Membership Option!

The pro membership hides all ads, plus gives you double the colors in the color bucket, and more awesome pro features!

[Learn more, Memberships starting at \\$2.50/m!](#)

**Follow me
on Twitter!**

@ConvertingColor