

Converting Colors

Android(4292854221)

Have a look what the booklet for
Android(4292854221) contains.

Android(4292854221)	3
<i>Conversions</i>	4
<i>Details</i>	6
<i>Harmonies</i>	11
<i>Previews</i>	23
<i>Color Blindness Simulation</i>	26
<i>CSS Examples</i>	29

Color

Android(4292854221)

Conversions

Conversions Part 1

Format	Color
Hex	DFC1CD
RGB	223, 193, 205
RGB Percent	87%, 76%, 80%
CMY	0.1255, 0.2431, 0.1961
CMYK	0.00, 0.13, 0.08, 0.13
HSL	336°, 32%, 82%
HSV	336°, 13%, 87%
XYZ	60.5208, 58.2357, 65.8084
YIQ	203.3380, 14.0280, 10.0920

Conversions

Conversions Part 2

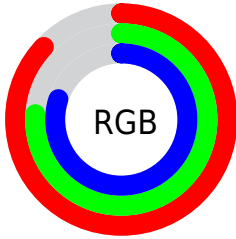
Format	Color
RYB	223, 193, 205
Decimal	14664141
CIELab	80.87, 12.61, -2.08
CIELCh	81, 12.784, 350.633
Yxy	58.2357, 0.3279, 0.3155
Android (android.graphics.Color)	4292854221 (0xFFDFC1CD)
YUV	203.3380, 0.8194, 17.2436
Hunter-Lab	76.3123, 8.0161, 2.2895

Details

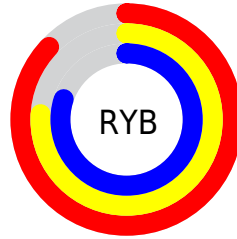
The Android color `4292854221` is a light color, and the websafe version is hex `FFCCCC`. A complement of this color would be `4290895827`, and the grayscale version is `4291546059`.

A 20% lighter version of the original color is `4294966015`, and `4289235863` is the 20% darker color. If you saturate the color by 10%, you get `4292848576`, and if you desaturate by 10%, it is `4292859866`.

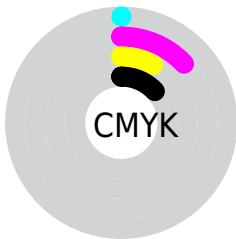
Distribution



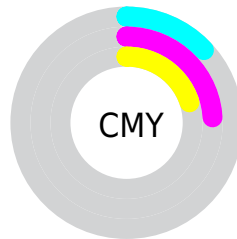
- Red (87%)
- Green (76%)
- Blue (80%)



- Red (87%)
- Yellow (76%)
- Blue (80%)



- Cyan (0%)
- Magenta (13%)
- Yellow (8%)
- Black (13%)



- Cyan (13%)
- Magenta (24%)
- Yellow (20%)

Brightness & Saturation Gradients

These gradients show how the Android color 4292854221 changes by changing the brightness by 10 percent. The first figure shows a shift by +10% for each color and the second figure -10%.

Similar to the brightness gradients but the following saturation gradients show a change of the Android color 4292854221 by changing the saturation by 10% instead.

 4292854221

 4292854221

4294967295

 4291012274

 4294966015

 4289235863

 4287459965

 4285749604

 4284170828

 4282592054

 4281079584

 4279894025

 4278190080

 4292854221

 4292854221

 4292848576

 4292859866

 4292842674

 4292865768

 4292837029

 4292870133

 4292831383

 4292870143

 4292825738

 4292819837

 4292814191

 4292808546

 4292804697

Harmonies

Analogous

The Analogous color harmony consists of three colors that are next to each other on the color wheel.



4292199384



4292854221



4293116353

Triad

The Triadic color harmony groups three colors that are evenly spaced from another and form a triangle on the color wheel.



4292854221



4291480498



4289580763

Complementary

The Complementary color scheme is a pair of colors which are on the opposite of each other on the color wheel.



4292854221



4290895827

Split Complementary

Split-complementary colors differ from the complementary color scheme. The scheme consists of three colors, the original color and two neighbors of the complement color.



4289450193



4292854221



4290563769

Square

The Square scheme is like the rectangle color scheme, but the four colors are evenly spaced on the color wheel.



4292854221



4292265905



4289777860



4290300896

Rectangle

The Rectangle color scheme consists of four colors that form a rectangle on the color wheel.



4292854221



4292985530



4289777860



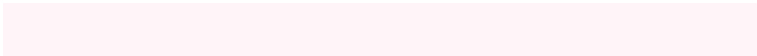
4289515480

Sweetspot

The Sweet Spot groups the original color and five complimentary colors.



4292854221



4294964729



4292067807



4286609788



4278190080



4286611584

Same Dimension

The Same Dimension uses a secret algorithm to generate beautiful new colors.



4292854221



4294956775



4292854977



4285556073



4289724486



4281335827

Inverse Universe

The Inverse Universe completely reimagines the original color for something new.



4292854221



4294956775



4290895071



4285556073



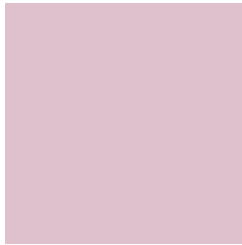
4289724486



4281335827

Previews

White Background



This preview shows how the Android color 4292854221 looks on a white background.

Color Contrast Check

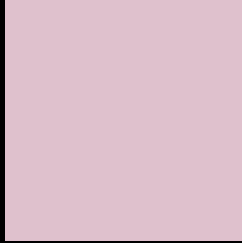
Large Text (above 18pt) WCAG AA × Fail

Any Text WCAG AA × Fail

Large Text (above 18pt) WCAG AAA × Fail

Any Text WCAG AAA × Fail

Black Background



This preview shows how the Android color 4292854221 looks on a black background.

Color Contrast Check

Large Text (above 18pt) WCAG AA ✓ Pass

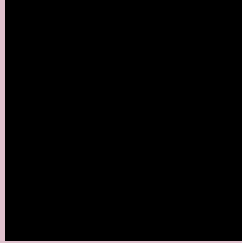
Any Text WCAG AA ✓ Pass

Large Text (above 18pt) WCAG AAA ✓ Pass

Any Text WCAG AAA ✓ Pass

If you want to check with other color combinations, try the [Color Contrast Checker](#).

Android 4292854221 Background



This preview shows how black text looks on a background with the Android color 4292854221.

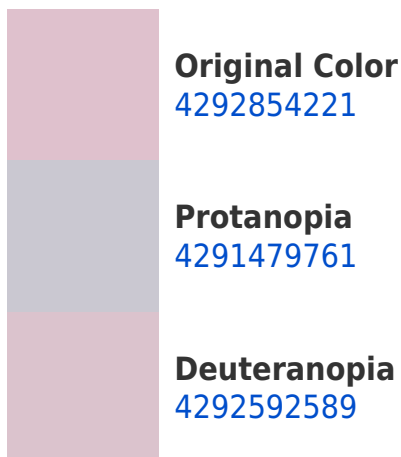



This preview shows how white text looks on a background with the Android color 4292854221.

Color Blindness Simulation

Color vision deficiency is a very complex topic, and I could not describe the different causes any better than Wikipedia does, so if you want to learn more, you should check out their [article about color blindness](#).

Dichromacy





Tritanopia
4292854224

Trichromacy



Original Color
4292854221

Protanomaly
4292003280

Deuteranomaly
4292657869

Tritanomaly
4292854223

Monochromacy



Original Color
4292854221

Achromatopsia
4291546059

Achromatomaly
4292003788

CSS Examples

Text

The CSS property to change the color of the text to Android 4292854221 is called "color". The color property can be set on classes, ids or directly on the HTML element.

This example shows how text in the color `rgb(223, 193, 205)` looks like.

```
.text, #text, p{  
    color:rgb(223, 193, 205)  
}
```

If you want to add a text shadow in that color use the text-shadow property, you can generate a text shadow directly with our [CSS Text Shadow Generator](#).

Here you see how black text with a 4 pixel rgb(223, 193, 205) colored shadow looks like.

```
.shadow{ text-shadow: 4px 4px 2px rgb(223, 193, 205) }
```

Border

The CSS property to change the border of an element to Android 4292854221 is called "border". The border property can be set on classes, ids or directly on the HTML element.

This example shows the color as border, it can be applied via the CSS property "border" or "border-color".

```
.border, #border, table{ border:4px solid rgb(223, 193, 205) }
```

If only the border color should be changed use the property `border-color`.

```
.border{ border-color:rgb(223, 193, 205) }
```

If you want to add a box shadow in that color use:

Here you see how a box with a 4 pixel `rgb(223, 193, 205)` colored shadow looks like.

```
.boxshadow{ -moz-box-shadow:4px 4px 4px  
4px rgb(223, 193, 205); -webkit-box-  
shadow:4px 4px 4px 4px rgb(223, 193, 205);  
box-shadow:4px 4px 4px 4px rgb(223, 193,  
205) }
```

Background

The CSS property to change the background color of an element to Android 4292854221 is called "background". The background property can be set on classes, ids or directly on the HTML element.

```
.background, #background, body{  
background: rgb(223, 193, 205) }
```

If only the background color should be changed can be used:

```
.background{ background-color: rgb(223,  
193, 205) }
```

This example shows the color as background, it is applied via the CSS property "background".

To optimize and compress your CSS code, you can use our [online CSS compressor and optimizer](#) based on csstidy. If you want to create a linear or radial gradient as background or border, check our [CSS Gradient Generator](#).

Hey! You found this booklet interesting? Support Converting Colors with the new Membership Option!

The pro membership hides all ads, plus gives you double the colors in the color bucket, and more awesome pro features!

[Learn more, Memberships starting at \\$2.50/m!](#)

**Follow me
on Twitter!**

@ConvertingColor