

Converting Colors

Android(4292855721)

Have a look what the booklet for
Android(4292855721) contains.

Android(4292855721)	3
<i>Conversions</i>	4
<i>Details</i>	6
<i>Harmonies</i>	11
<i>Previews</i>	23
<i>Color Blindness Simulation</i>	26
<i>CSS Examples</i>	29

Color

Android(4292855721)

Conversions

Conversions Part 1

Format	Color
Hex	DFC7A9
RGB	223, 199, 169
RGB Percent	87%, 78%, 66%
CMY	0.1255, 0.2196, 0.3373
CMYK	0.00, 0.11, 0.24, 0.13
HSL	33°, 46%, 77%
HSV	33°, 24%, 87%
XYZ	58.0163, 59.3994, 45.9436
YIQ	202.7560, 23.9340, -4.2420

Conversions

Conversions Part 2

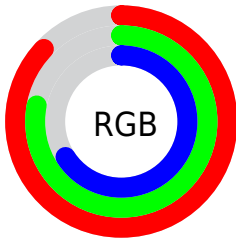
Format	Color
R _Y B	212, 223, 169
Decimal	14665641
CIE Lab	81.51, 3.83, 18.11
CIE LCh	82, 18.514, 78.050
Yxy	59.3994, 0.3551, 0.3636
Android (android.graphics.Color)	4292855721 (0xFFDFC7A9)
YUV	202.7560, -16.6417, 17.7540
Hunter-Lab	77.0710, -0.5059, 18.6058

Details

The Android color `4292855721` is a light color, and the websafe version is hex `CCCC99`. A complement of this color would be `4289315295`, and the grayscale version is `4291546059`.

A 20% lighter version of the original color is `4294967264`, and `4289171829` is the 20% darker color. If you saturate the color by 10%, you get `4292853139`, and if you desaturate by 10%, it is `4292858303`.

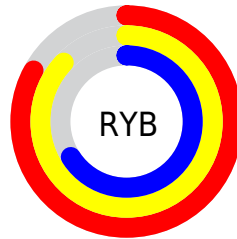
Distribution



Red (87%)

Green (78%)

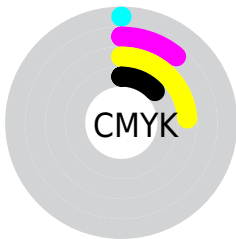
Blue (66%)



Red (83%)

Yellow (87%)

Blue (66%)

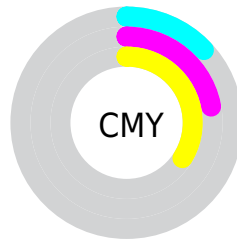


Cyan (0%)

Magenta (11%)

Yellow (24%)

Black (13%)



Cyan (13%)

Magenta (22%)

Yellow (34%)

Brightness & Saturation Gradients

These gradients show how the Android color 4292855721 changes by changing the brightness by 10 percent. The first figure shows a shift by +10% for each color and the second figure -10%.

Similar to the brightness gradients but the following saturation gradients show a change of the Android color 4292855721 by changing the saturation by 10% instead.



4292855721



4292855721

4294967295



4291013774



4294967264



4289171829

4294967293



4287395932



4285685572



4284041006



4282462489



4281015296



4279304704



4278190080

 4292855721

 4292855721

 4292853139

 4292858303

 4292850556

 4292860886

 4292847974

 4292863468

 4292845392

 4292866047

 4292842810

 4292868607

 4292840483

 4292870143

 4292837901

 4292836352

Harmonies

Analogous

The Analogous color harmony consists of three colors that are next to each other on the color wheel.



4293640881



4292855721



4291677610

Triad

The Triadic color harmony groups three colors that are evenly spaced from another and form a triangle on the color wheel.



4292855721



4288533973



4292527074

Complementary

The Complementary color scheme is a pair of colors which are on the opposite of each other on the color wheel.



4292855721



4289315295

Split Complementary

Split-complementary colors differ from the complementary color scheme. The scheme consists of three colors, the original color and two neighbors of the complement color.



4291152107



4292855721



4288730084

Square

The Square scheme is like the rectangle color scheme, but the four colors are evenly spaced on the color wheel.



4292855721



4289254595



4289711852



4293509074

Rectangle

The Rectangle color scheme consists of four colors that form a rectangle on the color wheel.



4292855721



4290826415



4289711852



4292134374

Sweetspot

The Sweet Spot groups the original color and five complimentary colors.



4292855721



4294965229



4292848065



4286610293



4278190080



4286611584

Same Dimension

The Same Dimension uses a secret algorithm to generate beautiful new colors.



4292855721



4294958773



4292665257



4285557605



4289749504



4281342720

Inverse Universe

The Inverse Universe completely reimagines the original color for something new.



4289315295



4290107135



4289505759



4284836464



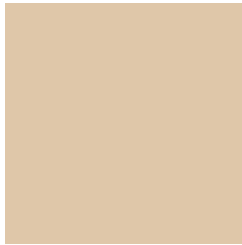
4278210224



4278195760

Previews

White Background



This preview shows how the Android color 4292855721 looks on a white background.

Color Contrast Check

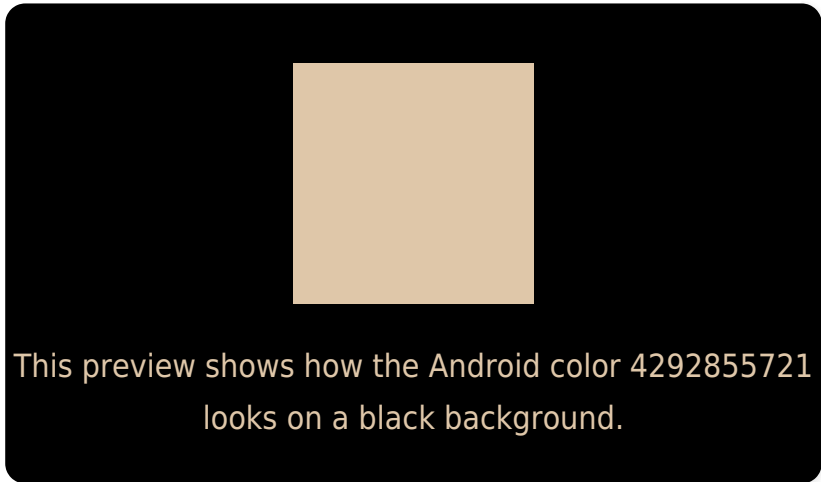
Large Text (above 18pt) WCAG AA × Fail

Any Text WCAG AA × Fail

Large Text (above 18pt) WCAG AAA × Fail

Any Text WCAG AAA × Fail

Black Background



Color Contrast Check

Large Text (above 18pt) WCAG AA ✓ Pass

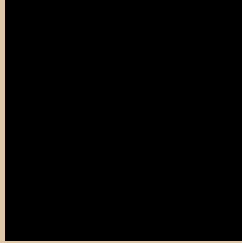
Any Text WCAG AA ✓ Pass

Large Text (above 18pt) WCAG AAA ✓ Pass

Any Text WCAG AAA ✓ Pass

If you want to check with other color combinations, try the [Color Contrast Checker](#).

Android 4292855721 Background



This preview shows how black text looks on a background with the Android color 4292855721.




This preview shows how white text looks on a background with the Android color 4292855721.

Color Blindness Simulation

Color vision deficiency is a very complex topic, and I could not describe the different causes any better than Wikipedia does, so if you want to learn more, you should check out their [article about color blindness](#).

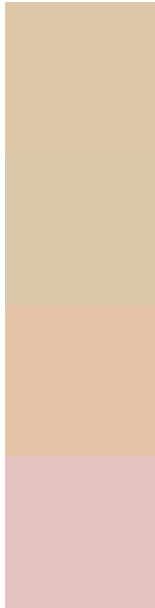
Dichromacy





Tritanopia
4293181905

Trichromacy



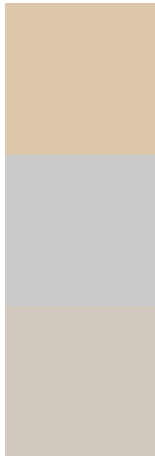
Original Color
4292855721

Protanomaly
4292463018

Deuteranomaly
4293313706

Tritanomaly
4293051330

Monochromacy



Original Color
4292855721

Achromatopsia
4291546059

Achromatomaly
4292004543

CSS Examples

Text

The CSS property to change the color of the text to Android 4292855721 is called "color". The color property can be set on classes, ids or directly on the HTML element.

This example shows how text in the color `rgb(223, 199, 169)` looks like.

```
.text, #text, p{  
    color:rgb(223, 199, 169)  
}
```

If you want to add a text shadow in that color use the text-shadow property, you can generate a text shadow directly with our [CSS Text Shadow Generator](#).

Here you see how black text with a 4 pixel rgb(223, 199, 169) colored shadow looks like.

```
.shadow{ text-shadow: 4px 4px 2px rgb(223, 199, 169) }
```

Border

The CSS property to change the border of an element to Android 4292855721 is called "border". The border property can be set on classes, ids or directly on the HTML element.

This example shows the color as border, it can be applied via the CSS property "border" or "border-color".

```
.border, #border, table{ border:4px solid rgb(223, 199, 169) }
```

If only the border color should be changed use the property `border-color`.

```
.border{ border-color:rgb(223, 199, 169) }
```

If you want to add a box shadow in that color use:

Here you see how a box with a 4 pixel `rgb(223, 199, 169)` colored shadow looks like.

```
.boxshadow{ -moz-box-shadow:4px 4px 4px 4px rgb(223, 199, 169); -webkit-box-shadow:4px 4px 4px 4px rgb(223, 199, 169); box-shadow:4px 4px 4px 4px rgb(223, 199, 169) }
```

Background

The CSS property to change the background color of an element to Android 4292855721 is called "background". The background property can be set on classes, ids or directly on the HTML element.

```
.background, #background, body{  
background: rgb(223, 199, 169) }
```

If only the background color should be changed can be used:

```
.background{ background-color: rgb(223,  
199, 169) }
```

This example shows the color as background, it is applied via the CSS property "background".

To optimize and compress your CSS code, you can use our [online CSS compressor and optimizer](#) based on csstidy. If you want to create a linear or radial gradient as background or border, check our [CSS Gradient Generator](#).

Hey! You found this booklet interesting? Support Converting Colors with the new Membership Option!

The pro membership hides all ads, plus gives you double the colors in the color bucket, and more awesome pro features!

[Learn more, Memberships starting at \\$2.50/m!](#)

**Follow me
on Twitter!**

@ConvertingColor