

# Converting Colors

Android(4292856530)

Have a look what the booklet for  
Android(4292856530) contains.

<b>Android(4292856530)</b> .....	3
<i><b>Conversions</b></i> .....	4
<i><b>Details</b></i> .....	6
<i><b>Harmonies</b></i> .....	11
<i><b>Previews</b></i> .....	23
<i><b>Color Blindness Simulation</b></i> .....	26
<i><b>CSS Examples</b></i> .....	29

# **Color**

**Android(4292856530)**

# Conversions

## Conversions Part 1

Format	Color
Hex	DFCAD2
RGB	223, 202, 210
RGB Percent	87%, 79%, 82%
CMY	0.1255, 0.2078, 0.1765
CMYK	0.00, 0.09, 0.06, 0.13
HSL	337°, 25%, 83%
HSV	337°, 9%, 87%
XYZ	63.1848, 62.5822, 69.7221
YIQ	209.1910, 9.9480, 6.9400

# Conversions

## Conversions Part 2

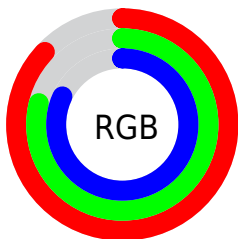
<b>Format</b>	<b>Color</b>
R <sub>Y</sub> B	223, 202, 210
Decimal	14666450
CIE Lab	83.22, 8.70, -1.31
CIE LCh	83, 8.794, 351.415
Yxy	62.5822, 0.3232, 0.3201
Android (android.graphics.Color)	4292856530 (0xFFDFCAD2)
YUV	209.1910, 0.3988, 12.1105
Hunter-Lab	79.1089, 4.1286, 3.1214

# Details

The Android color `4292856530` is a light color, and the websafe version is hex `CCCCCC`. A complement of this color would be `4291485655`, and the grayscale version is `4291940817`.

A 20% lighter version of the original color is `4294967295`, and `4289238172` is the 20% darker color. If you saturate the color by 10%, you get `4292850884`, and if you desaturate by 10%, it is `4292862176`.

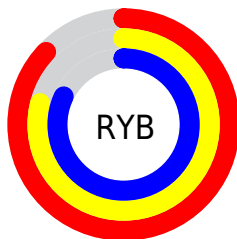
# Distribution



Red (87%)

Green (79%)

Blue (82%)



Red (87%)

Yellow (79%)

Blue (82%)

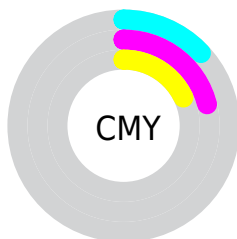


Cyan (0%)

Magenta (9%)

Yellow (6%)

Black (13%)



Cyan (13%)

Magenta (21%)

Yellow (18%)

# Brightness & Saturation Gradients

These gradients show how the Android color 4292856530 changes by changing the brightness by 10 percent. The first figure shows a shift by +10% for each color and the second figure -10%.

Similar to the brightness gradients but the following saturation gradients show a change of the Android color 4292856530 by changing the saturation by 10% instead.



 4292856530

 4292856530

4294967295

 4291014582


 4289238172

 4287462018

 4285817192

 4284172880

 4282594106

 4281146916

 4279829775

 4278190080

 4292856530

 4292856530

 4292850884

 4292862176

 4292844982

 4292868078

 4292839337

 4292870139

 4292833691

 4292870143

 4292827789

 4292822143

 4292816497

 4292810852

 4292804950

# Harmonies

## Analogous

The Analogous color harmony consists of three colors that are next to each other on the color wheel.



4292398042



4292856530



4293053130

# Triad

The Triadic color harmony groups three colors that are evenly spaced from another and form a triangle on the color wheel.



4292856530



4291875264



4290630620

# Complementary

The Complementary color scheme is a pair of colors which are on the opposite of each other on the color wheel.



4292856530



4291485655

# Split Complementary

Split-complementary colors differ from the complementary color scheme. The scheme consists of three colors, the original color and two neighbors of the complement color.



4290499797



4292856530



4291220421

# Square

The Square scheme is like the rectangle color scheme, but the four colors are evenly spaced on the color wheel.



4292856530



4292464319



4290761933



4291088863

# Rectangle

The Rectangle color scheme consists of four colors that form a rectangle on the color wheel.



4292856530



4292987845



4290761933



4290565338

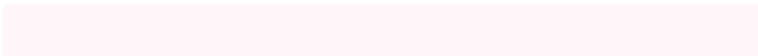


# Sweetspot

The Sweet Spot groups the original color and five complimentary colors.



4292856530



4294965242



4292332255



4286610044



4278190080



4286611584



# Same Dimension

The Same Dimension uses a secret algorithm to generate beautiful new colors.



4292856530



4294960110



4292857034



4285556073



4289724483



4281335826



# Inverse Universe

The Inverse Universe completely reimagines the original color for something new.



4292856530



4294960110



4291485151



4285556073



4289724483

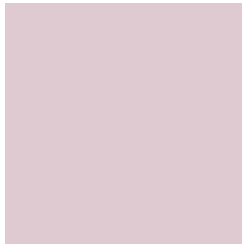


4281335826



# Previews

## White Background



This preview shows how the Android color 4292856530 looks on a white background.

## Color Contrast Check

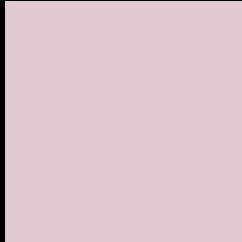
Large Text (above 18pt) WCAG AA × Fail

Any Text WCAG AA × Fail

Large Text (above 18pt) WCAG AAA × Fail

Any Text WCAG AAA × Fail

# Black Background



This preview shows how the Android color 4292856530 looks on a black background.

## Color Contrast Check

Large Text (above 18pt) WCAG AA ✓ Pass

Any Text WCAG AA ✓ Pass

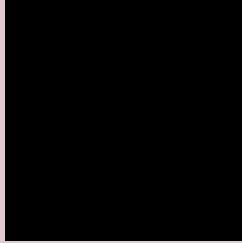
Large Text (above 18pt) WCAG AAA ✓ Pass

Any Text WCAG AAA ✓ Pass

If you want to check with other color combinations, try the [Color Contrast Checker](#).



# Android 4292856530 Background



This preview shows how black text looks on a background with the Android color 4292856530.




This preview shows how white text looks on a background with the Android color 4292856530.

# Color Blindness Simulation

Color vision deficiency is a very complex topic, and I could not describe the different causes any better than Wikipedia does, so if you want to learn more, you should check out their [article about color blindness](#).

## Dichromacy

	<b>Original Color</b> <a href="#">4292856530</a>
	<b>Protanopia</b> <a href="#">4292005588</a>
	<b>Deuteranopia</b> <a href="#">4293052882</a>



**Tritanopia**  
4292921817

# Trichromacy



**Original Color**  
4292856530

**Protanomaly**  
4292333011

**Deuteranomaly**  
4292987346

**Tritanomaly**  
4292921814

# Monochromacy



**Original Color**  
4292856530

**Achromatopsia**  
4291940817

**Achromatomaly**  
4292267729

# CSS Examples

## Text

The CSS property to change the color of the text to Android 4292856530 is called "color". The color property can be set on classes, ids or directly on the HTML element.

This example shows how text in the color `rgb(223, 202, 210)` looks like.

```
.text, #text, p{  
    color:rgb(223, 202, 210)  
}
```

If you want to add a text shadow in that color use the text-shadow property, you can generate a text shadow directly with our [CSS Text Shadow Generator](#).

Here you see how black text with a 4 pixel rgb(223, 202, 210) colored shadow looks like.

```
.shadow{ text-shadow: 4px 4px 2px rgb(223, 202, 210) }
```

## Border

The CSS property to change the border of an element to Android 4292856530 is called "border". The border property can be set on classes, ids or directly on the HTML element.

This example shows the color as border, it can be applied via the CSS property "border" or "border-color".

```
.border, #border, table{ border:4px solid rgb(223, 202, 210) }
```

If only the border color should be changed use the property `border-color`.

```
.border{ border-color:rgb(223, 202, 210) }
```

If you want to add a box shadow in that color use:

Here you see how a box with a 4 pixel `rgb(223, 202, 210)` colored shadow looks like.

```
.boxshadow{ -moz-box-shadow:4px 4px 4px  
4px rgb(223, 202, 210); -webkit-box-  
shadow:4px 4px 4px 4px rgb(223, 202, 210);  
box-shadow:4px 4px 4px 4px rgb(223, 202,  
210) }
```

# Background

The CSS property to change the background color of an element to Android 4292856530 is called "background". The background property can be set on classes, ids or directly on the HTML element.

```
.background, #background, body{  
background: rgb(223, 202, 210) }
```

If only the background color should be changed can be used:

```
.background{ background-color: rgb(223,  
202, 210) }
```

This example shows the color as background, it is applied via the CSS property "background".

To optimize and compress your CSS code, you can use our [online CSS compressor and optimizer](#) based on csstidy. If you want to create a linear or radial gradient as background or border, check our [CSS Gradient Generator](#).



Hey! You found this booklet interesting? Support Converting Colors with the new Membership Option!

The pro membership hides all ads, plus gives you double the colors in the color bucket, and more awesome pro features!

**[Learn more, Memberships starting at \\$2.50/m!](#)**

**Follow me  
on Twitter!**

@ConvertingColor