

Converting Colors

Android(4292874598)

Have a look what the booklet for
Android(4292874598) contains.

Android(4292874598)	3
<i>Conversions</i>	4
<i>Details</i>	6
<i>Harmonies</i>	11
<i>Previews</i>	23
<i>Color Blindness Simulation</i>	26
<i>CSS Examples</i>	29

Color

Android(4292874598)

Conversions

Conversions Part 1

Format	Color
Hex	E01166
RGB	224, 17, 102
RGB Percent	88%, 7%, 40%
CMY	0.1216, 0.9333, 0.6000
CMYK	0.00, 0.92, 0.54, 0.12
HSL	335°, 86%, 47%
HSV	335°, 92%, 88%
XYZ	33.3392, 17.2075, 14.1346
YIQ	88.5830, 96.0870, 70.3190

Conversions

Conversions Part 2

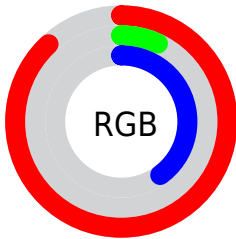
Format	Color
R_{YB}	224, 17, 102
Decimal	14684518
CIE Lab	48.52, 74.52, 9.97
CIE LCh	49, 75.181, 7.624
Yxy	17.2075, 0.5154, 0.2660
Android (android.graphics.Color)	4292874598 (0xFFE01166)
YUV	88.5830, 6.6146, 118.7607
Hunter-Lab	41.4819, 70.8678, 8.8348

Details

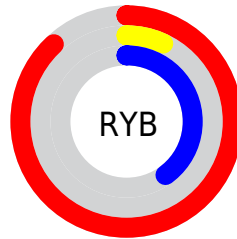
The Android color **4292874598** is a dark color, and the websafe version is hex **CC0066**. The color can be described as dark washed rose. A complement of this color would be **4279361675**, and the grayscale version is **4283979864**.

A 20% lighter version of the original color is **4294926489**, and **4288741432** is the 20% darker color. If you saturate the color by 10%, you get **4292870236**, and if you desaturate by 10%, it is **4292880243**.

Distribution



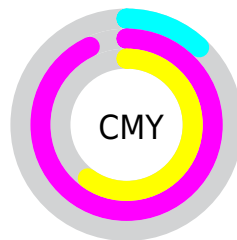
- Red (88%)
- Green (7%)
- Blue (40%)



- Red (88%)
- Yellow (7%)
- Blue (40%)



- Cyan (0%)
- Magenta (92%)
- Yellow (54%)
- Black (12%)



- Cyan (12%)
- Magenta (93%)
- Yellow (60%)

Brightness & Saturation Gradients

These gradients show how the Android color 4292874598 changes by changing the brightness by 10 percent. The first figure shows a shift by +10% for each color and the second figure -10%.

Similar to the brightness gradients but the following saturation gradients show a change of the Android color 4292874598 by changing the saturation by 10% instead.

 4292874598

 4292874598

4294967295

 4290838606

 4294926489

 4288741432

 4294934195

 4286775331

 4294941903

 4284743693

 4294949611

 4282843140

 4294957311

 4280680449

 4294964991

 4278190080

 4292874598

 4292874598

 4292870236

 4292880243

 4292886144

 4292891790

 4292897691

 4292903336

 4292908981

 4292914882

 4292920528

 4292926429

Harmonies

Analogous

The Analogous color harmony consists of three colors that are next to each other on the color wheel.



4291375013



4292874598



4292163880

Triad

The Triadic color harmony groups three colors that are evenly spaced from another and form a triangle on the color wheel.



4292874598



4281631744



4278224874

Complementary

The Complementary color scheme is a pair of colors which are on the opposite of each other on the color wheel.



4292874598



4279361675

Split Complementary

Split-complementary colors differ from the complementary color scheme. The scheme consists of three colors, the original color and two neighbors of the complement color.



4278226368



4292874598



4278225727

Square

The Square scheme is like the rectangle color scheme, but the four colors are evenly spaced on the color wheel.



4292874598



4286477824



4278226562



4278220787

Rectangle

The Rectangle color scheme consists of four colors that form a rectangle on the color wheel.



4292874598



4290728704



4278226562



4278225631

Sweetspot

The Sweet Spot groups the original color and five complimentary colors.



4292874598



4294949077



4287238624



4286600294



4278190080



4286611584

Same Dimension

The Same Dimension uses a secret algorithm to generate beautiful new colors.



4292874598



4294901865



4292878865



4285556074



4289724488



4281335828

Inverse Universe

The Inverse Universe completely reimagines the original color for something new.



4292874598



4294901865



4279357408



4285556074



4289724488



4281335828

Previews

White Background



This preview shows how the Android color 4292874598 looks on a white background.

Color Contrast Check

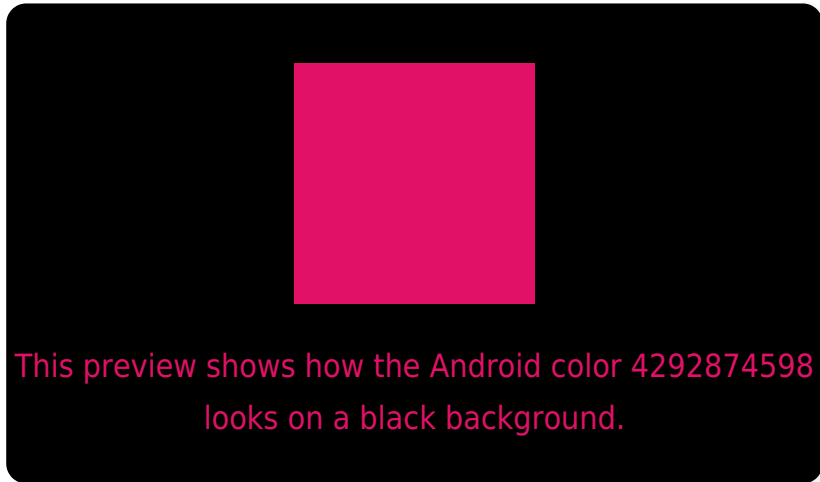
Large Text (above 18pt) WCAG AA ✓ Pass

Any Text WCAG AA ✓ Pass

Large Text (above 18pt) WCAG AAA ✓ Pass

Any Text WCAG AAA × Fail

Black Background



Color Contrast Check

Large Text (above 18pt) WCAG AA ✓ Pass

Any Text WCAG AA × Fail

Large Text (above 18pt) WCAG AAA × Fail

Any Text WCAG AAA × Fail

If you want to check with other color combinations, try the [Color Contrast Checker](#).

Android 4292874598 Background



This preview shows how black text looks on a background with the Android color 4292874598.



This preview shows how white text looks on a background with the Android color 4292874598.

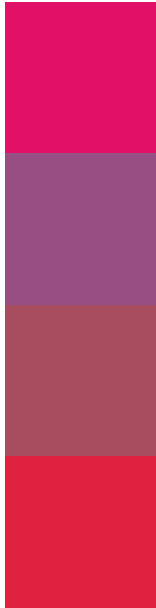
Color Blindness Simulation

Color vision deficiency is a very complex topic, and I could not describe the different causes any better than Wikipedia does, so if you want to learn more, you should check out their [article about color blindness](#).

Dichromacy



Trichromacy



Original Color
4292874598

Protanomaly
4288106371

Deuteranomaly
4289219936

Tritanomaly
4292813376

Monochromacy



Original Color
4292874598

Achromatopsia
4284045657

Achromatomaly
4287250270

CSS Examples

Text

The CSS property to change the color of the text to Android 4292874598 is called "color". The color property can be set on classes, ids or directly on the HTML element.

This example shows how text in the color `rgb(224, 17, 102)` looks like.

```
.text, #text, p{  
    color:rgb(224, 17, 102)  
}
```

If you want to add a text shadow in that color use the text-shadow property, you can generate a text shadow directly with our [CSS Text Shadow Generator](#).

Here you see how black text with a 4 pixel rgb(224, 17, 102) colored shadow looks like.

```
.shadow{ text-shadow: 4px 4px 2px rgb(224, 17, 102) }
```

Border

The CSS property to change the border of an element to Android 4292874598 is called "border". The border property can be set on classes, ids or directly on the HTML element.

This example shows the color as border, it can be applied via the CSS property "border" or "border-color".

```
.border, #border, table{ border:4px solid rgb(224, 17, 102) }
```

If only the border color should be changed use the property border-color.

```
.border{ border-color:rgb(224, 17, 102) }
```

If you want to add a box shadow in that color use:

Here you see how a box with a 4 pixel rgb(224, 17, 102) colored shadow looks like.

```
.boxshadow{ -moz-box-shadow:4px 4px 4px  
4px rgb(224, 17, 102); -webkit-box-  
shadow:4px 4px 4px 4px rgb(224, 17, 102);  
box-shadow:4px 4px 4px 4px rgb(224, 17,  
102) }
```

Background

The CSS property to change the background color of an element to Android 4292874598 is called "background". The background property can be set on classes, ids or directly on the HTML element.

```
.background, #background, body{  
background: rgb(224, 17, 102) }
```

If only the background color should be changed can be used:

```
.background{ background-color: rgb(224, 17,  
102) }
```

This example shows the color as background, it is applied via the CSS property "background".

To optimize and compress your CSS code, you can use our [online CSS compressor and optimizer](#) based on csstidy. If you want to create a linear or radial gradient as background or border, check our [CSS Gradient Generator](#).

Hey! You found this booklet interesting? Support Converting Colors with the new Membership Option!

The pro membership hides all ads, plus gives you double the colors in the color bucket, and more awesome pro features!

[Learn more, Memberships starting at \\$2.50/m!](#)

**Follow me
on Twitter!**

@ConvertingColor