

# Converting Colors

Android(4292877653)

Have a look what the booklet for  
Android(4292877653) contains.

<b>Android(4292877653)</b> .....	3
<b><i>Conversions</i></b> .....	4
<b><i>Details</i></b> .....	6
<b><i>Harmonies</i></b> .....	11
<b><i>Previews</i></b> .....	23
<b><i>Color Blindness Simulation</i></b> .....	26
<b><i>CSS Examples</i></b> .....	29

**Color**

**Android(4292877653)**

# Conversions

## Conversions Part 1

<b>Format</b>	<b>Color</b>
Hex	E01D55
RGB	224, 29, 85
RGB Percent	88%, 11%, 33%
CMY	0.1216, 0.8863, 0.6667
CMYK	0.00, 0.87, 0.62, 0.12
HSL	343°, 77%, 50%
HSV	343°, 87%, 88%
XYZ	32.8195, 17.3819, 10.2196
YIQ	93.6890, 98.2440, 58.7560

# Conversions

## Conversions Part 2

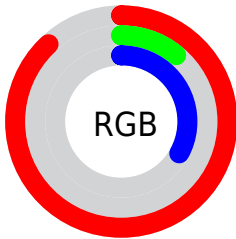
<b>Format</b>	<b>Color</b>
<b>R<sub>YB</sub></b>	224, 29, 85
Decimal	14687573
CIE <sub>Lab</sub>	48.74, 71.74, 20.73
CIE <sub>LCh</sub>	49, 74.672, 16.114
Yxy	17.3819, 0.5432, 0.2877
Android (android.graphics.Color)	4292877653 (0xFFE01D55)
YUV	93.6890, -4.2837, 114.2827
Hunter-Lab	41.6916, 67.5544, 14.6508

# Details

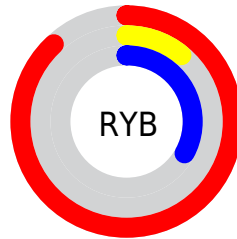
The Android color **4292877653** is a dark color, and the websafe version is hex **FF3366**. The color can be described as dark washed red. A complement of this color would be **4280148136**, and the grayscale version is **4284374622**.

A 20% lighter version of the original color is **4294927494**, and **4288741417** is the 20% darker color. If you saturate the color by 10%, you get **4292872005**, and if you desaturate by 10%, it is **4292883301**.

# Distribution



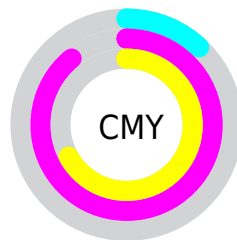
- Red (88%)
- Green (11%)
- Blue (33%)



- Red (88%)
- Yellow (11%)
- Blue (33%)



- Cyan (0%)
- Magenta (87%)
- Yellow (62%)
- Black (12%)



- Cyan (12%)
- Magenta (89%)
- Yellow (67%)

# Brightness & Saturation Gradients

These gradients show how the Android color 4292877653 changes by changing the brightness by 10 percent. The first figure shows a shift by +10% for each color and the second figure -10%.

Similar to the brightness gradients but the following saturation gradients show a change of the Android color 4292877653 by changing the saturation by 10% instead.



 4292877653

 4292877653

4294967295

 4290773054

 4294927494

 4288741417

 4294935200

 4286709781

 4294942651

 4284678145

 4294950359

 4282777603

 4294958067

 4280614913

 4294965759

 4278190080

 4292877653

 4292877653

 4292872005

 4292883301

■ 4292870208

■ 4292889205

■ 4292894853

■ 4292900757

■ 4292906405

■ 4292912053

■ 4292917957

■ 4292923605

■ 4292929509

# Harmonies

## Analogous

The Analogous color harmony consists of three colors that are next to each other on the color wheel.



4292093332



4292877653



4291642901

# Triad

The Triadic color harmony groups three colors that are evenly spaced from another and form a triangle on the color wheel.



4292877653



4278224641



4278224112

# Complementary

The Complementary color scheme is a pair of colors which are on the opposite of each other on the color wheel.



4292877653



4280148136

# Split Complementary

Split-complementary colors differ from the complementary color scheme. The scheme consists of three colors, the original color and two neighbors of the complement color.



4278226383



4292877653



4278226259

# Square

The Square scheme is like the rectangle color scheme, but the four colors are evenly spaced on the color wheel.



4292877653



4285364992



4278226837



4278218991

# Rectangle

The Rectangle color scheme consists of four colors that form a rectangle on the color wheel.



4292877653



4290010368



4278226837



4278225128



# Sweetspot

The Sweet Spot groups the original color and five complimentary colors.



4292877653



4294950352



4289076704



4286601315



4278190080



4286611584



# Same Dimension

The Same Dimension uses a secret algorithm to generate beautiful new colors.



4292877653



4294901833



4292887581



4285556072



4289724467



4281335822



# Inverse Universe

The Inverse Universe completely reimagines the original color for something new.



4292877653



4294901833



4280138208



4285556072



4289724467



4281335822



# Previews

## White Background



This preview shows how the Android color 4292877653 looks on a white background.

## Color Contrast Check

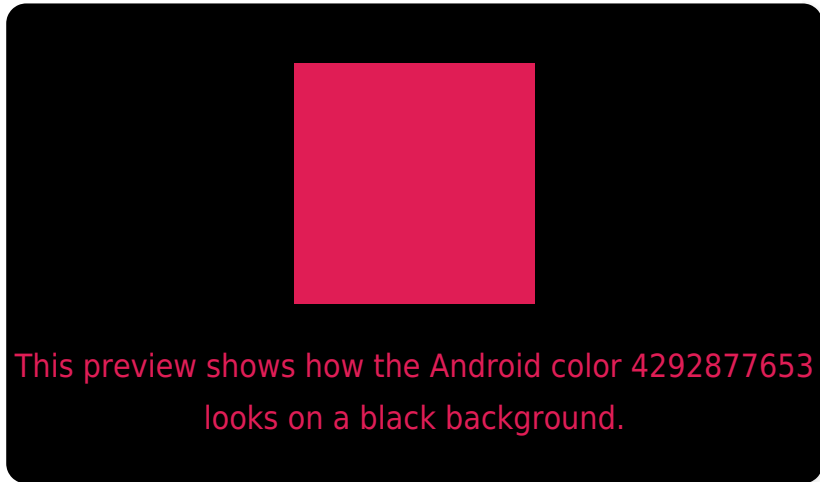
Large Text (above 18pt) WCAG AA ✓ Pass

Any Text WCAG AA ✓ Pass

Large Text (above 18pt) WCAG AAA ✓ Pass

Any Text WCAG AAA × Fail

# Black Background



## Color Contrast Check

Large Text (above 18pt) WCAG AA ✓ Pass

Any Text WCAG AA × Fail

Large Text (above 18pt) WCAG AAA × Fail

Any Text WCAG AAA × Fail

If you want to check with other color combinations, try the [Color Contrast Checker](#).



# Android 4292877653 Background



This preview shows how black text looks on a background with the Android color 4292877653.



This preview shows how white text looks on a background with the Android color 4292877653.

# Color Blindness Simulation

Color vision deficiency is a very complex topic, and I could not describe the different causes any better than Wikipedia does, so if you want to learn more, you should check out their [article about color blindness](#).

## Dichromacy



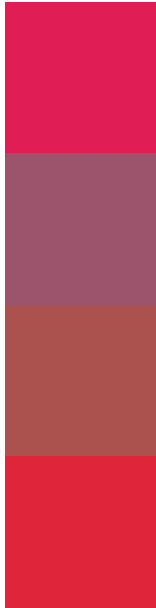
**Original Color**  
4292877653

**Protanopia**  
4285887609

**Deuteranopia**  
4287393868



# Trichromacy



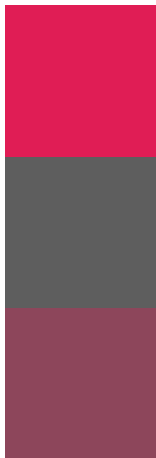
**Original Color**  
4292877653

**Protanomaly**  
4288435308

**Deuteranomaly**  
4289417807

**Tritanomaly**  
4292814138

# Monochromacy



**Original Color**  
4292877653

**Achromatopsia**  
4284374622

**Achromatomaly**  
4287448667

# CSS Examples

## Text

The CSS property to change the color of the text to Android 4292877653 is called "color". The color property can be set on classes, ids or directly on the HTML element.

This example shows how text in the color `rgb(224, 29, 85)` looks like.

```
.text, #text, p{  
  color:rgb(224, 29, 85)  
}
```

If you want to add a text shadow in that color use the text-shadow property, you can generate a text shadow directly with our [CSS Text Shadow Generator](#).

Here you see how black text with a 4 pixel rgb(224, 29, 85) colored shadow looks like.

```
.shadow{ text-shadow: 4px 4px 2px rgb(224, 29, 85) }
```

## Border

The CSS property to change the border of an element to Android 4292877653 is called "border". The border property can be set on classes, ids or directly on the HTML element.

This example shows the color as border, it can be applied via the CSS property "border" or "border-color".

```
.border, #border, table{ border:4px solid rgb(224, 29, 85) }
```

If only the border color should be changed use the property `border-color`.

```
.border{ border-color:rgb(224, 29, 85) }
```

If you want to add a box shadow in that color use:

Here you see how a box with a 4 pixel `rgb(224, 29, 85)` colored shadow looks like.

```
.boxshadow{ -moz-box-shadow:4px 4px 4px  
4px rgb(224, 29, 85); -webkit-box-  
shadow:4px 4px 4px 4px rgb(224, 29, 85);  
box-shadow:4px 4px 4px 4px rgb(224, 29,  
85) }
```

# Background

The CSS property to change the background color of an element to Android 4292877653 is called "background". The background property can be set on classes, ids or directly on the HTML element.

```
.background, #background, body{  
background: rgb(224, 29, 85) }
```

If only the background color should be changed can be used:

```
.background{ background-color: rgb(224, 29,  
85) }
```

This example shows the color as background, it is applied via the CSS property "background".

To optimize and compress your CSS code, you can use our [online CSS compressor and optimizer](#) based on csstidy. If you want to create a linear or radial gradient as background or border, check our [CSS Gradient Generator](#).



Hey! You found this booklet interesting? Support Converting Colors with the new Membership Option!

The pro membership hides all ads, plus gives you double the colors in the color bucket, and more awesome pro features!

**[Learn more, Memberships starting at \\$2.50/m!](#)**

**Follow me  
on Twitter!**

@ConvertingColor