

Converting Colors

Android(4292886916)

Have a look what the booklet for
Android(4292886916) contains.

Android(4292886916)	3
<i>Conversions</i>	4
<i>Details</i>	6
<i>Harmonies</i>	11
<i>Previews</i>	23
<i>Color Blindness Simulation</i>	26
<i>CSS Examples</i>	29

Color

Android(4292886916)

Conversions

Conversions Part 1

Format	Color
Hex	E04184
RGB	224, 65, 132
RGB Percent	88%, 25%, 52%
CMY	0.1216, 0.7451, 0.4824
CMYK	0.00, 0.71, 0.41, 0.12
HSL	335°, 72%, 57%
HSV	335°, 71%, 88%
XYZ	36.7956, 21.2938, 24.0006
YIQ	120.1790, 73.2570, 54.5450

Conversions

Conversions Part 2

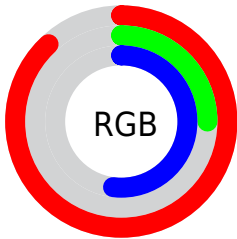
Format	Color
R_{YB}	224, 65, 132
Decimal	14696836
CIE _{Lab}	53.27, 65.83, -1.38
CIE _{LCh}	53, 65.848, 358.796
Yxy	21.2938, 0.4482, 0.2594
Android (android.graphics.Color)	4292886916 (0xFFE04184)
YUV	120.1790, 5.8278, 91.0510
Hunter-Lab	46.1452, 61.5795, 1.4644

Details

The Android color **4292886916** is a dark color, and the websafe version is hex **CC3366**. The color can be described as middle muted rose. A complement of this color would be **4282507421**, and the grayscale version is **4286085240**.

A 20% lighter version of the original color is **4294933689**, and **4288938067** is the 20% darker color. If you saturate the color by 10%, you get **4292881271**, and if you desaturate by 10%, it is **4292892561**.

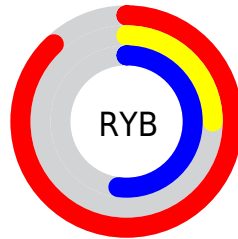
Distribution



Red (88%)

Green (25%)

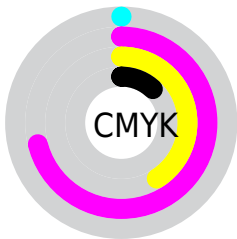
Blue (52%)



Red (88%)

Yellow (25%)

Blue (52%)

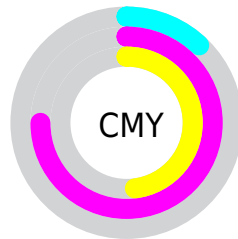


Cyan (0%)

Magenta (71%)

Yellow (41%)

Black (12%)



Cyan (12%)

Magenta (75%)

Yellow (48%)

Brightness & Saturation Gradients

These gradients show how the Android color 4292886916 changes by changing the brightness by 10 percent. The first figure shows a shift by +10% for each color and the second figure -10%.

Similar to the brightness gradients but the following saturation gradients show a change of the Android color 4292886916 by changing the saturation by 10% instead.

 4292886916

 4292886916

4294967295

 4290911595

 4294933689

 4288938067

 4294941141

 4286971964

 4294948593

 4285071398

 4294956031

 4283236370

 4294963711

 4281335810

 4278190080

 4292886916

 4292886916

 4292881271

 4292892561

 4292875370

 4292898462

 4292870238

 4292904107

 4292910008

 4292915653

 4292921298

 4292927199

 4292932844

 4292935673

Harmonies

Analogous

The Analogous color harmony consists of three colors that are next to each other on the color wheel.



4290794939



4292886916



4292823884

Triad

The Triadic color harmony groups three colors that are evenly spaced from another and form a triangle on the color wheel.



4292886916



4284713984



4278227936

Complementary

The Complementary color scheme is a pair of colors which are on the opposite of each other on the color wheel.



4292886916



4282507421

Split Complementary

Split-complementary colors differ from the complementary color scheme. The scheme consists of three colors, the original color and two neighbors of the complement color.



4278229173



4292886916



4278228032

Square

The Square scheme is like the rectangle color scheme, but the four colors are evenly spaced on the color wheel.



4292886916



4288379904



4278229115



4278224881

Rectangle

The Rectangle color scheme consists of four colors that form a rectangle on the color wheel.



4292886916



4291910697



4278229115



4278228692

Sweetspot

The Sweet Spot groups the original color and five complimentary colors.



4292886916



4294953440



4288365024



4286603373



4278190080



4286611584

Same Dimension

The Same Dimension uses a secret algorithm to generate beautiful new colors.



4292886916



4294911618



4292889665



4285556074



4289724490



4281335828

Inverse Universe

The Inverse Universe completely reimagines the original color for something new.



4292886916



4294911618



4282504672



4285556074



4289724490



4281335828

Previews

White Background



This preview shows how the Android color 4292886916 looks on a white background.

Color Contrast Check

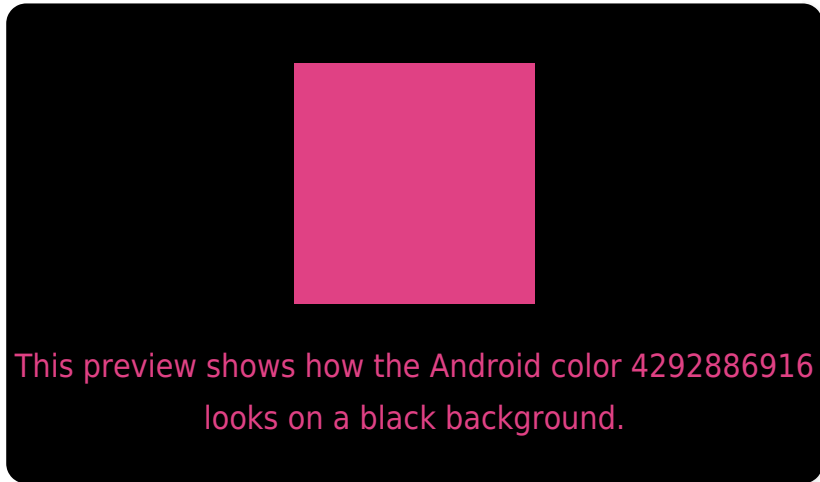
Large Text (above 18pt) WCAG AA ✓ Pass

Any Text WCAG AA ✗ Fail

Large Text (above 18pt) WCAG AAA ✗ Fail

Any Text WCAG AAA ✗ Fail

Black Background



Color Contrast Check

Large Text (above 18pt) WCAG AA ✓ Pass

Any Text WCAG AA ✓ Pass

Large Text (above 18pt) WCAG AAA ✓ Pass

Any Text WCAG AAA × Fail

If you want to check with other color combinations, try the [Color Contrast Checker](#).

Android 4292886916 Background



This preview shows how black text looks on a background with the Android color 4292886916.



This preview shows how white text looks on a background with the Android color 4292886916.

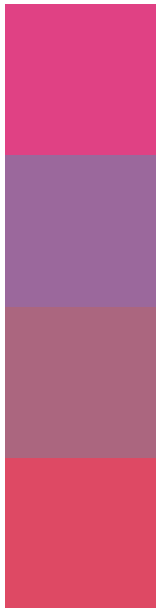
Color Blindness Simulation

Color vision deficiency is a very complex topic, and I could not describe the different causes any better than Wikipedia does, so if you want to learn more, you should check out their [article about color blindness](#).

Dichromacy



Trichromacy



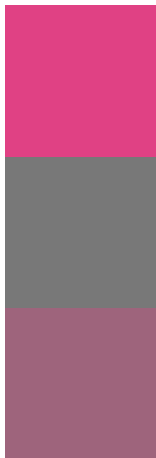
Original Color
4292886916

Protanomaly
4288374940

Deuteranomaly
4289422975

Tritanomaly
4292757860

Monochromacy



Original Color
4292886916

Achromatopsia
4286085240

Achromatomaly
4288570492

CSS Examples

Text

The CSS property to change the color of the text to Android 4292886916 is called "color". The color property can be set on classes, ids or directly on the HTML element.

This example shows how text in the color `rgb(224, 65, 132)` looks like.

```
.text, #text, p{  
    color:rgb(224, 65, 132)  
}
```

If you want to add a text shadow in that color use the text-shadow property, you can generate a text shadow directly with our [CSS Text Shadow Generator](#).

Here you see how black text with a 4 pixel rgb(224, 65, 132) colored shadow looks like.

```
.shadow{ text-shadow: 4px 4px 2px rgb(224, 65, 132) }
```

Border

The CSS property to change the border of an element to Android 4292886916 is called "border". The border property can be set on classes, ids or directly on the HTML element.

This example shows the color as border, it can be applied via the CSS property "border" or "border-color".

```
.border, #border, table{ border:4px solid rgb(224, 65, 132) }
```

If only the border color should be changed use the property border-color.

```
.border{ border-color:rgb(224, 65, 132) }
```

If you want to add a box shadow in that color use:

Here you see how a box with a 4 pixel rgb(224, 65, 132) colored shadow looks like.

```
.boxshadow{ -moz-box-shadow:4px 4px 4px  
4px rgb(224, 65, 132); -webkit-box-  
shadow:4px 4px 4px 4px rgb(224, 65, 132);  
box-shadow:4px 4px 4px 4px rgb(224, 65,  
132) }
```

Background

The CSS property to change the background color of an element to Android 4292886916 is called "background". The background property can be set on classes, ids or directly on the HTML element.

```
.background, #background, body{  
background: rgb(224, 65, 132) }
```

If only the background color should be changed can be used:

```
.background{ background-color: rgb(224, 65,  
132) }
```

This example shows the color as background, it is applied via the CSS property "background".

To optimize and compress your CSS code, you can use our [online CSS compressor and optimizer](#) based on csstidy. If you want to create a linear or radial gradient as background or border, check our [CSS Gradient Generator](#).

Hey! You found this booklet interesting? Support Converting Colors with the new Membership Option!

The pro membership hides all ads, plus gives you double the colors in the color bucket, and more awesome pro features!

[Learn more, Memberships starting at \\$2.50/m!](#)

**Follow me
on Twitter!**

@ConvertingColor