

Converting Colors

Android(4292891792)

Have a look what the booklet for
Android(4292891792) contains.

Android(4292891792)	3
<i>Conversions</i>	4
<i>Details</i>	6
<i>Harmonies</i>	11
<i>Previews</i>	23
<i>Color Blindness Simulation</i>	26
<i>CSS Examples</i>	29

Color

Android(4292891792)

Conversions

Conversions Part 1

Format	Color
Hex	E05490
RGB	224, 84, 144
RGB Percent	88%, 33%, 56%
CMY	0.1216, 0.6706, 0.4353
CMYK	0.00, 0.63, 0.36, 0.12
HSL	334°, 69%, 60%
HSV	334°, 63%, 88%
XYZ	38.9448, 24.2016, 29.0043
YIQ	132.7000, 64.1800, 48.3400

Conversions

Conversions Part 2

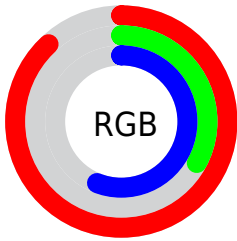
Format	Color
R_{YB}	224, 84, 144
Decimal	14701712
CIE _{Lab}	56.29, 59.78, -4.05
CIE _{LCh}	56, 59.917, 356.125
Yxy	24.2016, 0.4226, 0.2626
Android (android.graphics.Color)	4292891792 (0xFFE05490)
YUV	132.7000, 5.5709, 80.0701
Hunter-Lab	49.1951, 55.2165, -0.5195

Details

The Android color **4292891792** is a light color, and the websafe version is hex **FF6699**. The color can be described as light muted rose. A complement of this color would be **4283752612**, and the grayscale version is **4286940549**.

A 20% lighter version of the original color is **4294937798**, and **4289007966** is the 20% darker color. If you saturate the color by 10%, you get **4292886147**, and if you desaturate by 10%, it is **4292897437**.

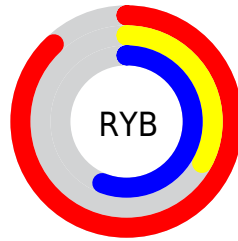
Distribution



Red (88%)

Green (33%)

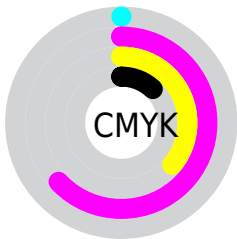
Blue (56%)



Red (88%)

Yellow (33%)

Blue (56%)

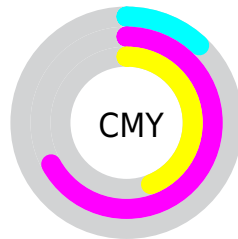


Cyan (0%)

Magenta (63%)

Yellow (36%)

Black (12%)



Cyan (12%)

Magenta (67%)

Yellow (44%)

Brightness & Saturation Gradients

These gradients show how the Android color 4292891792 changes by changing the brightness by 10 percent. The first figure shows a shift by +10% for each color and the second figure -10%.

Similar to the brightness gradients but the following saturation gradients show a change of the Android color 4292891792 by changing the saturation by 10% instead.

 4292891792

 4292891792

4294967295

 4290918262

 4294937798

 4289007966

 4294945250

 4287037510

 4294952446

 4285202480

 4294960127

 4283367451

 4281663490

 4278321152

 4278190080

 4292891792

 4292891792

 4292886147

 4292897437

 4292880246

 4292903338

 4292874602

 4292908982

 4292870240

 4292914883

 4292920528

 4292926173

 4292932074

 4292935670

 4292935679

Harmonies

Analogous

The Analogous color harmony consists of three colors that are next to each other on the color wheel.



4290733250



4292891792



4293089628

Triad

The Triadic color harmony groups three colors that are evenly spaced from another and form a triangle on the color wheel.



4292891792



4285829404



4278229725

Complementary

The Complementary color scheme is a pair of colors which are on the opposite of each other on the color wheel.



4292891792



4283752612

Split Complementary

Split-complementary colors differ from the complementary color scheme. The scheme consists of three colors, the original color and two neighbors of the complement color.



4278230963



4292891792



4280654665

Square

The Square scheme is like the rectangle color scheme, but the four colors are evenly spaced on the color wheel.



4292891792



4289167883



4278230910



4278226927

Rectangle

The Rectangle color scheme consists of four colors that form a rectangle on the color wheel.



4292891792



4292306493



4278230910



4278230481

Sweetspot

The Sweet Spot groups the original color and five complimentary colors.



4292891792



4294954979



4288894176



4286603887



4278190080



4286611584

Same Dimension

The Same Dimension uses a secret algorithm to generate beautiful new colors.



4292891792



4294918290



4292894036



4285556074



4289724491



4281335829

Inverse Universe

The Inverse Universe completely reimagines the original color for something new.



4292891792



4294918290



4283750368



4285556074



4289724491



4281335829

Previews

White Background



This preview shows how the Android color 4292891792 looks on a white background.

Color Contrast Check

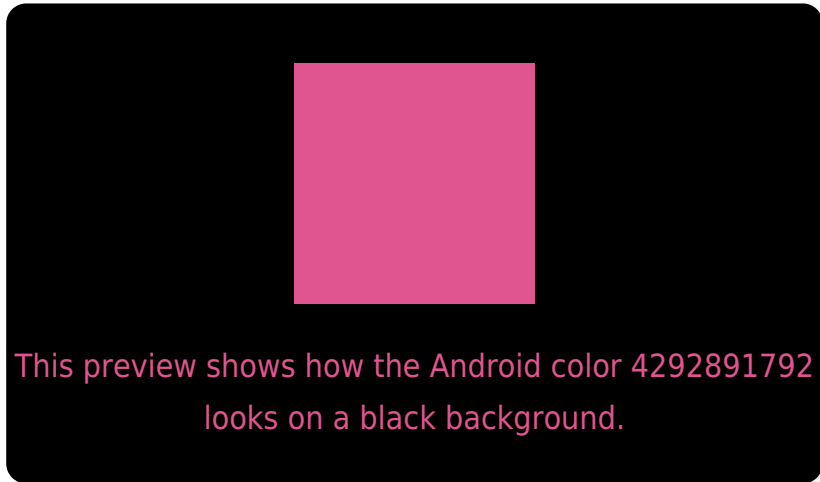
Large Text (above 18pt) WCAG AA ✓ Pass

Any Text WCAG AA ✗ Fail

Large Text (above 18pt) WCAG AAA ✗ Fail

Any Text WCAG AAA ✗ Fail

Black Background



Color Contrast Check

Large Text (above 18pt) WCAG AA ✓ Pass

Any Text WCAG AA ✓ Pass

Large Text (above 18pt) WCAG AAA ✓ Pass

Any Text WCAG AAA × Fail

If you want to check with other color combinations, try the [Color Contrast Checker](#).

Android 4292891792 Background



This preview shows how black text looks on a background with the Android color 4292891792.



This preview shows how white text looks on a background with the Android color 4292891792.

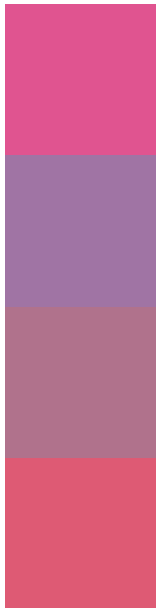
Color Blindness Simulation

Color vision deficiency is a very complex topic, and I could not describe the different causes any better than Wikipedia does, so if you want to learn more, you should check out their [article about color blindness](#).

Dichromacy



Trichromacy



Original Color
4292891792

Protanomaly
4288705700

Deuteranomaly
4289753740

Tritanomaly
4292762228

Monochromacy



Original Color
4292891792

Achromatopsia
4286940549

Achromatomaly
4289098633

CSS Examples

Text

The CSS property to change the color of the text to Android 4292891792 is called "color". The color property can be set on classes, ids or directly on the HTML element.

This example shows how text in the color `rgb(224, 84, 144)` looks like.

```
.text, #text, p{  
    color:rgb(224, 84, 144)  
}
```

If you want to add a text shadow in that color use the text-shadow property, you can generate a text shadow directly with our [CSS Text Shadow Generator](#).

Here you see how black text with a 4 pixel rgb(224, 84, 144) colored shadow looks like.

```
.shadow{ text-shadow: 4px 4px 2px rgb(224, 84, 144) }
```

Border

The CSS property to change the border of an element to Android 4292891792 is called "border". The border property can be set on classes, ids or directly on the HTML element.

This example shows the color as border, it can be applied via the CSS property "border" or "border-color".

```
.border, #border, table{ border:4px solid rgb(224, 84, 144) }
```

If only the border color should be changed use the property `border-color`.

```
.border{ border-color:rgb(224, 84, 144) }
```

If you want to add a box shadow in that color use:

Here you see how a box with a 4 pixel `rgb(224, 84, 144)` colored shadow looks like.

```
.boxshadow{ -moz-box-shadow:4px 4px 4px  
4px rgb(224, 84, 144); -webkit-box-  
shadow:4px 4px 4px 4px rgb(224, 84, 144);  
box-shadow:4px 4px 4px 4px rgb(224, 84,  
144) }
```

Background

The CSS property to change the background color of an element to Android 4292891792 is called "background". The background property can be set on classes, ids or directly on the HTML element.

```
.background, #background, body{  
background: rgb(224, 84, 144) }
```

If only the background color should be changed can be used:

```
.background{ background-color: rgb(224, 84,  
144) }
```

This example shows the color as background, it is applied via the CSS property "background".

To optimize and compress your CSS code, you can use our [online CSS compressor and optimizer](#) based on csstidy. If you want to create a linear or radial gradient as background or border, check our [CSS Gradient Generator](#).

Hey! You found this booklet interesting? Support Converting Colors with the new Membership Option!

The pro membership hides all ads, plus gives you double the colors in the color bucket, and more awesome pro features!

[Learn more, Memberships starting at \\$2.50/m!](#)

**Follow me
on Twitter!**

@ConvertingColor