

# Converting Colors

Android(4292907677)

Have a look what the booklet for  
Android(4292907677) contains.

<b>Android(4292907677)</b> .....	3
<b><i>Conversions</i></b> .....	4
<b><i>Details</i></b> .....	6
<b><i>Harmonies</i></b> .....	11
<b><i>Previews</i></b> .....	23
<b><i>Color Blindness Simulation</i></b> .....	26
<b><i>CSS Examples</i></b> .....	29

# **Color**

**Android(4292907677)**

# Conversions

## Conversions Part 1

Format	Color
Hex	E0929D
RGB	224, 146, 157
RGB Percent	88%, 57%, 62%
CMY	0.1216, 0.4275, 0.3843
CMYK	0.00, 0.35, 0.30, 0.12
HSL	352°, 56%, 73%
HSV	352°, 35%, 88%
XYZ	47.1052, 38.8394, 36.9123
YIQ	170.5760, 42.9570, 19.9570

# Conversions

## Conversions Part 2

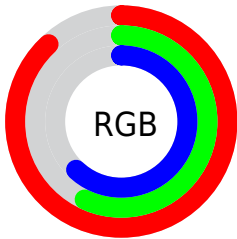
Format	Color
R <sub>Y</sub> B	224, 146, 157
Decimal	14717597
CIE Lab	68.63, 30.88, 6.47
CIE LCh	69, 31.547, 11.829
Yxy	38.8394, 0.3834, 0.3161
Android (android.graphics.Color)	4292907677 (0xFFE0929D)
YUV	170.5760, -6.6930, 46.8528
Hunter-Lab	62.3213, 25.8560, 8.5079

# Details

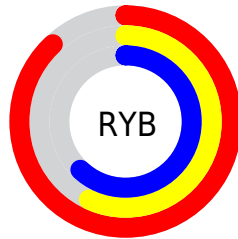
The Android color `4292907677` is a light color, and the websafe version is hex `CC9999`. A complement of this color would be `4287815893`, and the grayscale version is `4289440683`.

A 20% lighter version of the original color is `4294953427`, and `4289158762` is the 20% darker color. If you saturate the color by 10%, you get `4292902026`, and if you desaturate by 10%, it is `4292913328`.

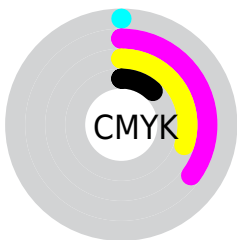
# Distribution



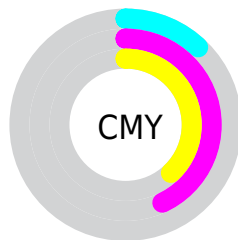
- Red (88%)
- Green (57%)
- Blue (62%)



- Red (88%)
- Yellow (57%)
- Blue (62%)



- Cyan (0%)
- Magenta (35%)
- Yellow (30%)
- Black (12%)



- Cyan (12%)
- Magenta (43%)
- Yellow (38%)

# Brightness & Saturation Gradients

These gradients show how the Android color 4292907677 changes by changing the brightness by 10 percent. The first figure shows a shift by +10% for each color and the second figure -10%.

Similar to the brightness gradients but the following saturation gradients show a change of the Android color 4292907677 by changing the saturation by 10% instead.



 4292907677

 4292907677

4294967295

 4291000451

 4294953427

 4289158762

 4294960624

 4287317586

 4285541947

 4283831589

 4282122256

 4280680449

 4278190080

 4292907677

 4292907677

 4292902026

 4292913328

 4292896119

 4292919235

 4292890467

 4292924887

 4292884560

 4292930794

 4292878909

 4292935677

 4292873258

 4292935679

 4292870176

# Harmonies

## Analogous

The Analogous color harmony consists of three colors that are next to each other on the color wheel.



4292187322



4292907677



4292646787

# Triad

The Triadic color harmony groups three colors that are evenly spaced from another and form a triangle on the color wheel.



4292907677



4287672700



4284985309

# Complementary

The Complementary color scheme is a pair of colors which are on the opposite of each other on the color wheel.



4292907677



4287815893

# Split Complementary

Split-complementary colors differ from the complementary color scheme. The scheme consists of three colors, the original color and two neighbors of the complement color.



4283020749



4292907677



4285445781

# Square

The Square scheme is like the rectangle color scheme, but the four colors are evenly spaced on the color wheel.



4292907677



4289767791



4283479986



4287801055

# Rectangle

The Rectangle color scheme consists of four colors that form a rectangle on the color wheel.



4292907677



4291927158



4283479986



4284134105

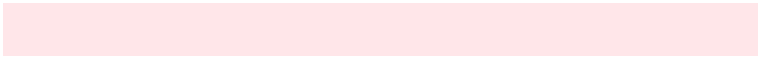


# Sweetspot

The Sweet Spot groups the original color and five complimentary colors.



4292907677



4294960873



4292121312



4286607474



4278190080



4286611584



# Same Dimension

The Same Dimension uses a secret algorithm to generate beautiful new colors.



4292907677



4294939811



4292914578



4285556071



4289724441



4281335815



# Inverse Universe

The Inverse Universe completely reimagines the original color for something new.



4292907677



4294939811



4287808992



4285556071



4289724441

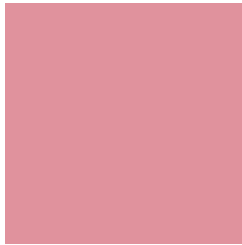


4281335815



# Previews

## White Background



This preview shows how the Android color 4292907677 looks on a white background.

## Color Contrast Check

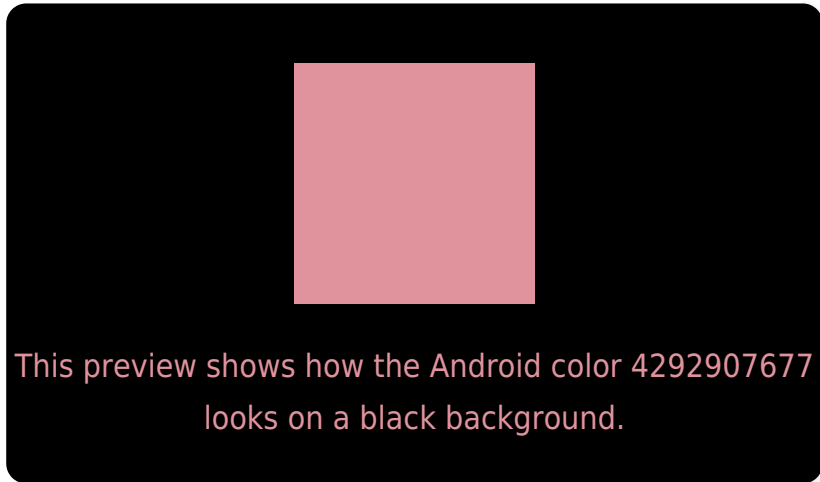
Large Text (above 18pt) WCAG AA × Fail

Any Text WCAG AA × Fail

Large Text (above 18pt) WCAG AAA × Fail

Any Text WCAG AAA × Fail

# Black Background



## Color Contrast Check

Large Text (above 18pt) WCAG AA ✓ Pass

Any Text WCAG AA ✓ Pass

Large Text (above 18pt) WCAG AAA ✓ Pass

Any Text WCAG AAA ✓ Pass

If you want to check with other color combinations, try the [Color Contrast Checker](#).



# Android 4292907677 Background



This preview shows how black text looks on a background with the Android color 4292907677.



This preview shows how white text looks on a background with the Android color 4292907677.

# Color Blindness Simulation

Color vision deficiency is a very complex topic, and I could not describe the different causes any better than Wikipedia does, so if you want to learn more, you should check out their [article about color blindness](#).

## Dichromacy



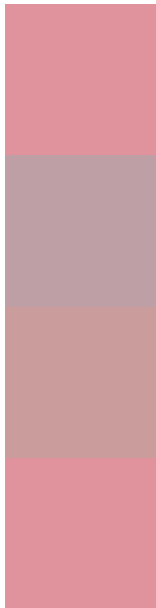
**Original Color**  
4292907677

**Protanopia**  
4289374121

**Deuteranopia**  
4290618010



# Trichromacy



**Original Color**  
4292907677

**Protanomaly**  
4290682789

**Deuteranomaly**  
4291468443

**Tritanomaly**  
4292907677

# Monochromacy



**Original Color**  
4292907677

**Achromatopsia**  
4289440683

**Achromatomaly**  
4290683558

# CSS Examples

## Text

The CSS property to change the color of the text to Android 4292907677 is called "color". The color property can be set on classes, ids or directly on the HTML element.

This example shows how text in the color `rgb(224, 146, 157)` looks like.

```
.text, #text, p{  
    color:rgb(224, 146, 157)  
}
```

If you want to add a text shadow in that color use the text-shadow property, you can generate a text shadow directly with our [CSS Text Shadow Generator](#).

Here you see how black text with a 4 pixel rgb(224, 146, 157) colored shadow looks like.

```
.shadow{ text-shadow: 4px 4px 2px rgb(224, 146, 157) }
```

## Border

The CSS property to change the border of an element to Android 4292907677 is called "border". The border property can be set on classes, ids or directly on the HTML element.

This example shows the color as border, it can be applied via the CSS property "border" or "border-color".

```
.border, #border, table{ border:4px solid rgb(224, 146, 157) }
```

If only the border color should be changed use the property `border-color`.

```
.border{ border-color:rgb(224, 146, 157) }
```

If you want to add a box shadow in that color use:

Here you see how a box with a 4 pixel `rgb(224, 146, 157)` colored shadow looks like.

```
.boxshadow{ -moz-box-shadow:4px 4px 4px  
4px rgb(224, 146, 157); -webkit-box-  
shadow:4px 4px 4px 4px rgb(224, 146, 157);  
box-shadow:4px 4px 4px 4px rgb(224, 146,  
157) }
```

# Background

The CSS property to change the background color of an element to Android 4292907677 is called "background". The background property can be set on classes, ids or directly on the HTML element.

```
.background, #background, body{  
background: rgb(224, 146, 157) }
```

If only the background color should be changed can be used:

```
.background{ background-color: rgb(224,  
146, 157) }
```

This example shows the color as background, it is applied via the CSS property "background".

To optimize and compress your CSS code, you can use our [online CSS compressor and optimizer](#) based on csstidy. If you want to create a linear or radial gradient as background or border, check our [CSS Gradient Generator](#).



Hey! You found this booklet interesting? Support Converting Colors with the new Membership Option!

The pro membership hides all ads, plus gives you double the colors in the color bucket, and more awesome pro features!

**[Learn more, Memberships starting at \\$2.50/m!](#)**

**Follow me  
on Twitter!**

@ConvertingColor