

Converting Colors

Android(4292909243)

Have a look what the booklet for
Android(4292909243) contains.

Android(4292909243)	3
<i>Conversions</i>	4
<i>Details</i>	6
<i>Harmonies</i>	11
<i>Previews</i>	23
<i>Color Blindness Simulation</i>	26
<i>CSS Examples</i>	29

Color

Android(4292909243)

Conversions

Conversions Part 1

Format	Color
Hex	E098BB
RGB	224, 152, 187
RGB Percent	88%, 60%, 73%
CMY	0.1216, 0.4039, 0.2667
CMYK	0.00, 0.32, 0.17, 0.12
HSL	331°, 54%, 74%
HSV	331°, 32%, 88%
XYZ	50.9383, 41.8916, 52.4149
YIQ	177.5180, 31.6770, 26.1490

Conversions

Conversions Part 2

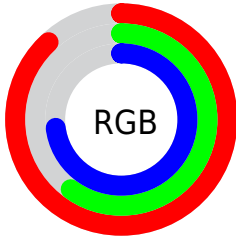
Format	Color
R_{YB}	224, 152, 187
Decimal	14719163
CIE _{Lab}	70.80, 32.02, -7.10
CIE _{LCh}	71, 32.793, 347.501
Yxy	41.8916, 0.3507, 0.2884
Android (android.graphics.Color)	4292909243 (0xFFE098BB)
YUV	177.5180, 4.6746, 40.7647
Hunter-Lab	64.7237, 27.2151, -2.7079

Details

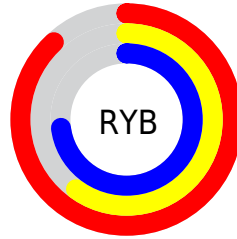
The Android color `4292909243` is a light color, and the websafe version is hex `CC99CC`. A complement of this color would be `4288209085`, and the grayscale version is `4289835441`.

A 20% lighter version of the original color is `4294954995`, and `4289225862` is the 20% darker color. If you saturate the color by 10%, you get `4292903599`, and if you desaturate by 10%, it is `4292914887`.

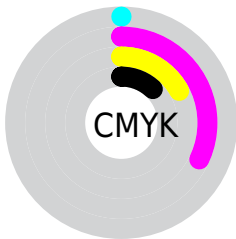
Distribution



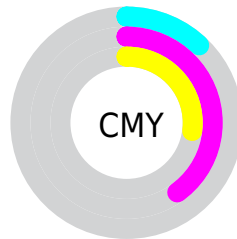
- Red (88%)
- Green (60%)
- Blue (73%)



- Red (88%)
- Yellow (60%)
- Blue (73%)



- Cyan (0%)
- Magenta (32%)
- Yellow (17%)
- Black (12%)



- Cyan (12%)
- Magenta (40%)
- Yellow (27%)

Brightness & Saturation Gradients

These gradients show how the Android color 4292909243 changes by changing the brightness by 10 percent. The first figure shows a shift by +10% for each color and the second figure -10%.

Similar to the brightness gradients but the following saturation gradients show a change of the Android color 4292909243 by changing the saturation by 10% instead.

 4292909243

 4292909243

4294967295

 4291002016

 4294954995

 4289225862

 4294962431

 4287384429

 4285674324

 4283964221

 4282319143

 4281008147

 4278190080

 4292909243

 4292909243

 4292903599

 4292914887

 4292897700

 4292920786

 4292892056

 4292926430

 4292886157

 4292932329

 4292880513

 4292935669

 4292874870

 4292935679

 4292870253

Harmonies

Analogous

The Analogous color harmony consists of three colors that are next to each other on the color wheel.



4291272662



4292909243



4293498781

Triad

The Triadic color harmony groups three colors that are evenly spaced from another and form a triangle on the color wheel.



4292909243



4289769844



4283284440

Complementary

The Complementary color scheme is a pair of colors which are on the opposite of each other on the color wheel.



4292909243



4288209085

Split Complementary

Split-complementary colors differ from the complementary color scheme. The scheme consists of three colors, the original color and two neighbors of the complement color.



4283284926



4292909243



4287543428

Square

The Square scheme is like the rectangle color scheme, but the four colors are evenly spaced on the color wheel.



4292909243



4291667827



4285250975



4285707495

Rectangle

The Rectangle color scheme consists of four colors that form a rectangle on the color wheel.



4292909243



4293237642



4285250975



4282957009

Sweetspot

The Sweet Spot groups the original color and five complimentary colors.



4292909243



4294960882



4290549984



4286607480



4278190080



4286611584

Same Dimension

The Same Dimension uses a secret algorithm to generate beautiful new colors.



4292909243



4294941900



4292909208



4285556074



4289724502



4281335832

Inverse Universe

The Inverse Universe completely reimagines the original color for something new.



4292909243



4294941900



4288209120



4285556074



4289724502



4281335832

Previews

White Background



This preview shows how the Android color 4292909243 looks on a white background.

Color Contrast Check

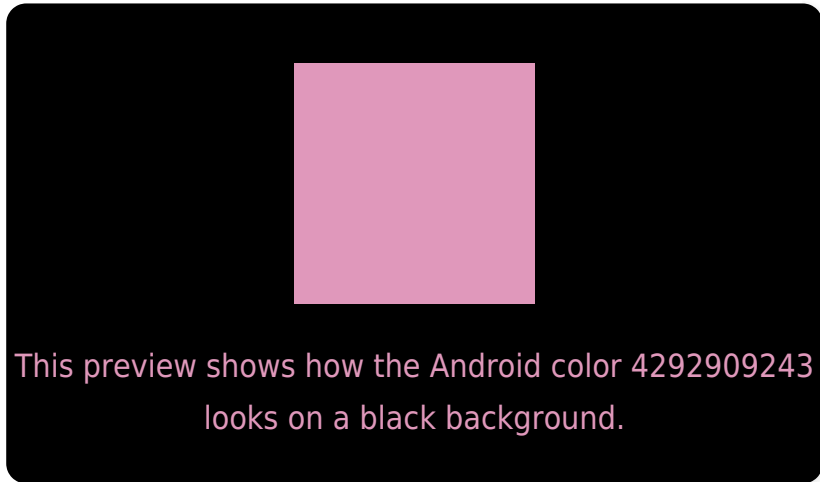
Large Text (above 18pt) WCAG AA × Fail

Any Text WCAG AA × Fail

Large Text (above 18pt) WCAG AAA × Fail

Any Text WCAG AAA × Fail

Black Background



Color Contrast Check

Large Text (above 18pt) WCAG AA ✓ Pass

Any Text WCAG AA ✓ Pass

Large Text (above 18pt) WCAG AAA ✓ Pass

Any Text WCAG AAA ✓ Pass

If you want to check with other color combinations, try the [Color Contrast Checker](#).

Android 4292909243 Background



This preview shows how black text looks on a background with the Android color 4292909243.



This preview shows how white text looks on a background with the Android color 4292909243.

Color Blindness Simulation

Color vision deficiency is a very complex topic, and I could not describe the different causes any better than Wikipedia does, so if you want to learn more, you should check out their [article about color blindness](#).

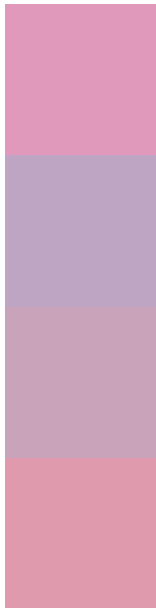
Dichromacy





Tritanopia
4292778919

Trichromacy



Original Color
4292909243

Protanomaly
4290618819

Deuteranomaly
4291339193

Tritanomaly
4292844206

Monochromacy



Original Color
4292909243

Achromatopsia
4289901234

Achromatomaly
4291013045

CSS Examples

Text

The CSS property to change the color of the text to Android 4292909243 is called "color". The color property can be set on classes, ids or directly on the HTML element.

This example shows how text in the color `rgb(224, 152, 187)` looks like.

```
.text, #text, p{  
    color:rgb(224, 152, 187)  
}
```

If you want to add a text shadow in that color use the text-shadow property, you can generate a text shadow directly with our [CSS Text Shadow Generator](#).

Here you see how black text with a 4 pixel rgb(224, 152, 187) colored shadow looks like.

```
.shadow{ text-shadow: 4px 4px 2px rgb(224, 152, 187) }
```

Border

The CSS property to change the border of an element to Android 4292909243 is called "border". The border property can be set on classes, ids or directly on the HTML element.

This example shows the color as border, it can be applied via the CSS property "border" or "border-color".

```
.border, #border, table{ border:4px solid rgb(224, 152, 187) }
```

If only the border color should be changed use the property `border-color`.

```
.border{ border-color:rgb(224, 152, 187) }
```

If you want to add a box shadow in that color use:

Here you see how a box with a 4 pixel `rgb(224, 152, 187)` colored shadow looks like.

```
.boxshadow{ -moz-box-shadow:4px 4px 4px 4px rgb(224, 152, 187); -webkit-box-shadow:4px 4px 4px 4px rgb(224, 152, 187); box-shadow:4px 4px 4px 4px rgb(224, 152, 187) }
```

Background

The CSS property to change the background color of an element to Android 4292909243 is called "background". The background property can be set on classes, ids or directly on the HTML element.

```
.background, #background, body{  
background: rgb(224, 152, 187) }
```

If only the background color should be changed can be used:

```
.background{ background-color: rgb(224,  
152, 187) }
```

This example shows the color as background, it is applied via the CSS property "background".

To optimize and compress your CSS code, you can use our [online CSS compressor and optimizer](#) based on csstidy. If you want to create a linear or radial gradient as background or border, check our [CSS Gradient Generator](#).

Hey! You found this booklet interesting? Support Converting Colors with the new Membership Option!

The pro membership hides all ads, plus gives you double the colors in the color bucket, and more awesome pro features!

[Learn more, Memberships starting at \\$2.50/m!](#)

**Follow me
on Twitter!**

@ConvertingColor