

Converting Colors

Android(4292909751)

Have a look what the booklet for
Android(4292909751) contains.

Android(4292909751)	3
<i>Conversions</i>	4
<i>Details</i>	6
<i>Harmonies</i>	11
<i>Previews</i>	23
<i>Color Blindness Simulation</i>	26
<i>CSS Examples</i>	29

Color

Android(4292909751)

Conversions

Conversions Part 1

Format	Color
Hex	E09AB7
RGB	224, 154, 183
RGB Percent	88%, 60%, 72%
CMY	0.1216, 0.3961, 0.2824
CMYK	0.00, 0.31, 0.18, 0.12
HSL	335°, 53%, 74%
HSV	335°, 31%, 88%
XYZ	50.8433, 42.3774, 50.2997
YIQ	178.2360, 32.4110, 23.8590

Conversions

Conversions Part 2

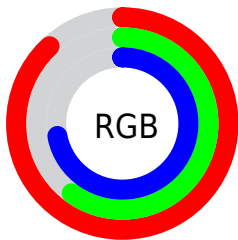
Format	Color
R_{YB}	224, 154, 183
Decimal	14719671
CIE Lab	71.13, 30.32, -4.38
CIE LCh	71, 30.637, 351.775
Yxy	42.3774, 0.3543, 0.2953
Android (android.graphics.Color)	4292909751 (0xFFE09AB7)
YUV	178.2360, 2.3487, 40.1350
Hunter-Lab	65.0979, 25.4922, -0.2435

Details

The Android color `4292909751` is a light color, and the websafe version is hex `CC99CC`. A complement of this color would be `4288340163`, and the grayscale version is `4289901234`.

A 20% lighter version of the original color is `4294955503`, and `4289226370` is the 20% darker color. If you saturate the color by 10%, you get `4292904106`, and if you desaturate by 10%, it is `4292915396`.

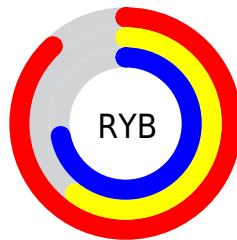
Distribution



Red (88%)

Green (60%)

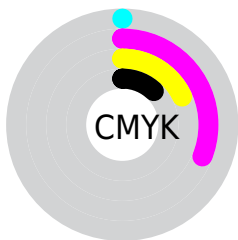
Blue (72%)



Red (88%)

Yellow (60%)

Blue (72%)

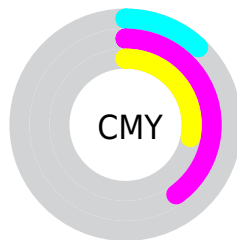


Cyan (0%)

Magenta (31%)

Yellow (18%)

Black (12%)



Cyan (12%)

Magenta (40%)

Yellow (28%)

Brightness & Saturation Gradients


These gradients show how the Android color 4292909751 changes by changing the brightness by 10 percent. The first figure shows a shift by +10% for each color and the second figure -10%.

Similar to the brightness gradients but the following saturation gradients show a change of the Android color 4292909751 by changing the saturation by 10% instead.

 4292909751

 4292909751

4294967295

 4291002524

 4294955503

 4289226370

 4294962943

 4287384937

 4285674833

 4283964730

 4282319908

 4281008143

 4278190080

 4292909751

 4292909751

 4292904106

 4292915396

 4292898205

 4292921297

 4292892560

 4292926942

 4292886659

 4292932843

 4292881013

 4292935673

 4292875368

 4292935679

 4292870237

Harmonies

Analogous

The Analogous color harmony consists of three colors that are next to each other on the color wheel.



4291469521



4292909751



4293302939

Triad

The Triadic color harmony groups three colors that are evenly spaced from another and form a triangle on the color wheel.



4292909751



4289573754



4284267225

Complementary

The Complementary color scheme is a pair of colors which are on the opposite of each other on the color wheel.



4292909751



4288340163

Split Complementary

Split-complementary colors differ from the complementary color scheme. The scheme consists of three colors, the original color and two neighbors of the complement color.



4283874754



4292909751



4287478155

Square

The Square scheme is like the rectangle color scheme, but the four colors are evenly spaced on the color wheel.



4292909751



4291406455



4285382053



4286493669

Rectangle

The Rectangle color scheme consists of four colors that form a rectangle on the color wheel.



4292909751



4293041802



4285382053



4283874258

Sweetspot

The Sweet Spot groups the original color and five complimentary colors.



4292909751



4294961394



4291009248



4286607735



4278190080



4286611584

Same Dimension

The Same Dimension uses a secret algorithm to generate beautiful new colors.



4292909751



4294942406



4292911258



4285556074



4289724489



4281335828

Inverse Universe

The Inverse Universe completely reimagines the original color for something new.



4292909751



4294942406



4288338656



4285556074



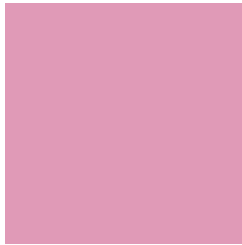
4289724489



4281335828

Previews

White Background



This preview shows how the Android color 4292909751 looks on a white background.

Color Contrast Check

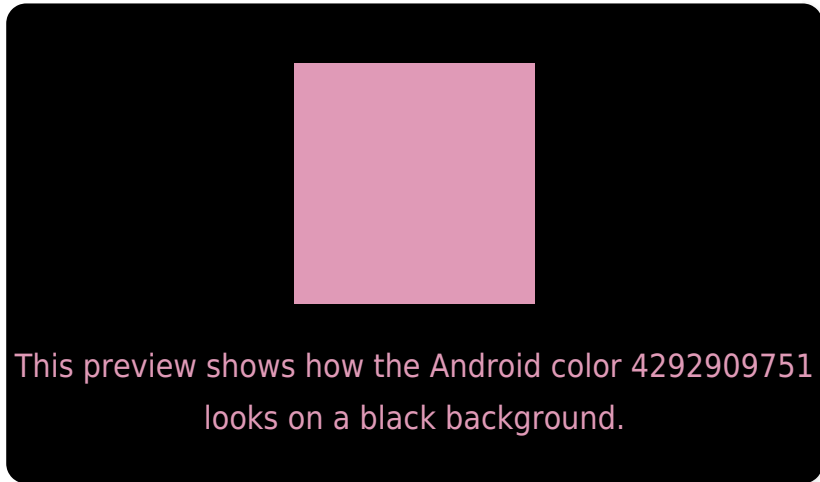
Large Text (above 18pt) WCAG AA × Fail

Any Text WCAG AA × Fail

Large Text (above 18pt) WCAG AAA × Fail

Any Text WCAG AAA × Fail

Black Background



Color Contrast Check

Large Text (above 18pt) WCAG AA ✓ Pass

Any Text WCAG AA ✓ Pass

Large Text (above 18pt) WCAG AAA ✓ Pass

Any Text WCAG AAA ✓ Pass

If you want to check with other color combinations, try the [Color Contrast Checker](#).

Android 4292909751 Background



This preview shows how black text looks on a background with the Android color 4292909751.



This preview shows how white text looks on a background with the Android color 4292909751.

Color Blindness Simulation

Color vision deficiency is a very complex topic, and I could not describe the different causes any better than Wikipedia does, so if you want to learn more, you should check out their [article about color blindness](#).

Dichromacy



Original Color
4292909751

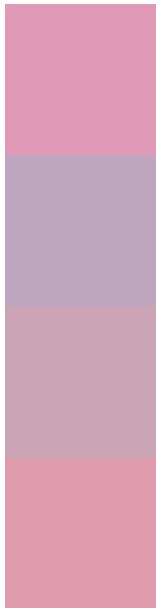
Protanopia
4289506755

Deuteranopia
4290619828



Tritanopia
4292779432

Trichromacy



Original Color
4292909751

Protanomaly
4290750143

Deuteranomaly
4291470517

Tritanomaly
4292844717

Monochromacy



Original Color
4292909751

Achromatopsia
4289901234

Achromatomaly
4291013044

CSS Examples

Text

The CSS property to change the color of the text to Android 4292909751 is called "color". The color property can be set on classes, ids or directly on the HTML element.

This example shows how text in the color `rgb(224, 154, 183)` looks like.

```
.text, #text, p{  
    color:rgb(224, 154, 183)  
}
```

If you want to add a text shadow in that color use the text-shadow property, you can generate a text shadow directly with our [CSS Text Shadow Generator](#).

Here you see how black text with a 4 pixel rgb(224, 154, 183) colored shadow looks like.

```
.shadow{ text-shadow: 4px 4px 2px rgb(224, 154, 183) }
```

Border

The CSS property to change the border of an element to Android 4292909751 is called "border". The border property can be set on classes, ids or directly on the HTML element.

This example shows the color as border, it can be applied via the CSS property "border" or "border-color".

```
.border, #border, table{ border:4px solid rgb(224, 154, 183) }
```

If only the border color should be changed use the property `border-color`.

```
.border{ border-color:rgb(224, 154, 183) }
```

If you want to add a box shadow in that color use:

Here you see how a box with a 4 pixel `rgb(224, 154, 183)` colored shadow looks like.

```
.boxshadow{ -moz-box-shadow:4px 4px 4px  
4px rgb(224, 154, 183); -webkit-box-  
shadow:4px 4px 4px 4px rgb(224, 154, 183);  
box-shadow:4px 4px 4px 4px rgb(224, 154,  
183) }
```

Background

The CSS property to change the background color of an element to Android 4292909751 is called "background". The background property can be set on classes, ids or directly on the HTML element.

```
.background, #background, body{  
background: rgb(224, 154, 183) }
```

If only the background color should be changed can be used:

```
.background{ background-color: rgb(224,  
154, 183) }
```

This example shows the color as background, it is applied via the CSS property "background".

To optimize and compress your CSS code, you can use our [online CSS compressor and optimizer](#) based on csstidy. If you want to create a linear or radial gradient as background or border, check our [CSS Gradient Generator](#).

Hey! You found this booklet interesting? Support Converting Colors with the new Membership Option!

The pro membership hides all ads, plus gives you double the colors in the color bucket, and more awesome pro features!

[Learn more, Memberships starting at \\$2.50/m!](#)

**Follow me
on Twitter!**

@ConvertingColor