

Converting Colors

Android(4292909754)

Have a look what the booklet for
Android(4292909754) contains.

Android(4292909754)	3
<i>Conversions</i>	4
<i>Details</i>	6
<i>Harmonies</i>	11
<i>Previews</i>	23
<i>Color Blindness Simulation</i>	26
<i>CSS Examples</i>	29

Color

Android(4292909754)

Conversions

Conversions Part 1

Format	Color
Hex	E09ABA
RGB	224, 154, 186
RGB Percent	88%, 60%, 73%
CMY	0.1216, 0.3961, 0.2706
CMYK	0.00, 0.31, 0.17, 0.12
HSL	333°, 53%, 74%
HSV	333°, 31%, 88%
XYZ	51.1590, 42.5037, 51.9620
YIQ	178.5780, 31.4480, 24.7920

Conversions

Conversions Part 2

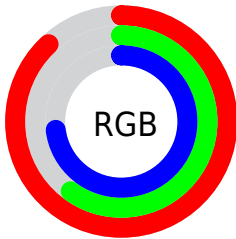
Format	Color
R_{YB}	224, 154, 186
Decimal	14719674
CIE _{Lab}	71.22, 30.79, -5.92
CIE _{LCh}	71, 31.352, 349.118
Yxy	42.5037, 0.3513, 0.2919
Android (android.graphics.Color)	4292909754 (0xFFE09ABA)
YUV	178.5780, 3.6590, 39.8351
Hunter-Lab	65.1948, 25.9797, -1.6193

Details

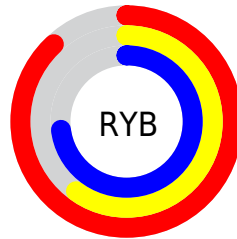
The Android color `4292909754` is a light color, and the websafe version is hex `CC99CC`. A complement of this color would be `4288340160`, and the grayscale version is `4289967027`.

A 20% lighter version of the original color is `4294955506`, and `4289226373` is the 20% darker color. If you saturate the color by 10%, you get `4292904110`, and if you desaturate by 10%, it is `4292915398`.

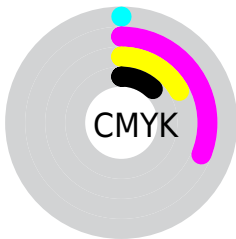
Distribution



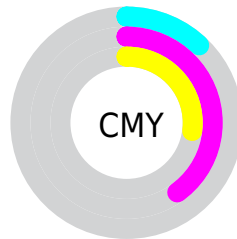
- Red (88%)
- Green (60%)
- Blue (73%)



- Red (88%)
- Yellow (60%)
- Blue (73%)



- Cyan (0%)
- Magenta (31%)
- Yellow (17%)
- Black (12%)



- Cyan (12%)
- Magenta (40%)
- Yellow (27%)

Brightness & Saturation Gradients

These gradients show how the Android color 4292909754 changes by changing the brightness by 10 percent. The first figure shows a shift by +10% for each color and the second figure -10%.

Similar to the brightness gradients but the following saturation gradients show a change of the Android color 4292909754 by changing the saturation by 10% instead.

 4292909754

 4292909754

4294967295

 4291002527

 4294955506

 4289226373

 4294962943

 4287384940

 4285674835

 4283964732

 4282319911

 4281008146

 4278190080

 4292909754

 4292909754

 4292904110

 4292915398

 4292898210

 4292921298

 4292892566

 4292926942

 4292886665

 4292932843

 4292881021

 4292935671

 4292875377

 4292935679

 4292870246

Harmonies

Analogous

The Analogous color harmony consists of three colors that are next to each other on the color wheel.



4291338708



4292909754



4293434013

Triad

The Triadic color harmony groups three colors that are evenly spaced from another and form a triangle on the color wheel.



4292909754



4289770104



4283939801

Complementary

The Complementary color scheme is a pair of colors which are on the opposite of each other on the color wheel.



4292909754



4288340160

Split Complementary

Split-complementary colors differ from the complementary color scheme. The scheme consists of three colors, the original color and two neighbors of the complement color.



4283743936



4292909754



4287609224

Square

The Square scheme is like the rectangle color scheme, but the four colors are evenly spaced on the color wheel.



4292909754



4291602807



4285447587



4286166246

Rectangle

The Rectangle color scheme consists of four colors that form a rectangle on the color wheel.



4292909754



4293172620



4285447587



4283612369

Sweetspot

The Sweet Spot groups the original color and five complimentary colors.



4292909754



4294961395



4290747104



4286607736



4278190080



4286611584

Same Dimension

The Same Dimension uses a secret algorithm to generate beautiful new colors.



4292909754



4294942410



4292910234



4285556074



4289724496



4281335830

Inverse Universe

The Inverse Universe completely reimagines the original color for something new.



4292909754



4294942410



4288339680



4285556074



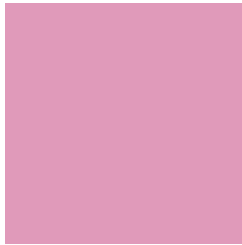
4289724496



4281335830

Previews

White Background



This preview shows how the Android color 4292909754 looks on a white background.

Color Contrast Check

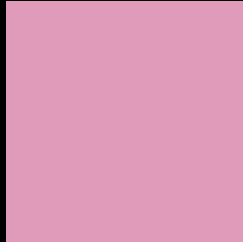
Large Text (above 18pt) WCAG AA × Fail

Any Text WCAG AA × Fail

Large Text (above 18pt) WCAG AAA × Fail

Any Text WCAG AAA × Fail

Black Background



This preview shows how the Android color 4292909754 looks on a black background.

Color Contrast Check

Large Text (above 18pt) WCAG AA ✓ Pass

Any Text WCAG AA ✓ Pass

Large Text (above 18pt) WCAG AAA ✓ Pass

Any Text WCAG AAA ✓ Pass

If you want to check with other color combinations, try the [Color Contrast Checker](#).

Android 4292909754 Background



This preview shows how black text looks on a background with the Android color 4292909754.



This preview shows how white text looks on a background with the Android color 4292909754.

Color Blindness Simulation

Color vision deficiency is a very complex topic, and I could not describe the different causes any better than Wikipedia does, so if you want to learn more, you should check out their [article about color blindness](#).

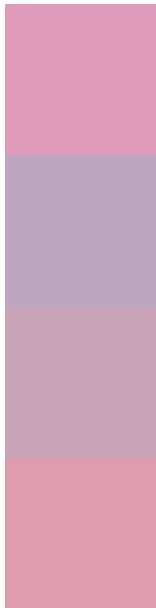
Dichromacy





Tritanopia
4292779433

Trichromacy



Original Color
4292909754

Protanomaly
4290684610

Deuteranomaly
4291404984

Tritanomaly
4292844719

Monochromacy



Original Color
4292909754

Achromatopsia
4289967027

Achromatomaly
4291013302

CSS Examples

Text

The CSS property to change the color of the text to Android 4292909754 is called "color". The color property can be set on classes, ids or directly on the HTML element.

This example shows how text in the color `rgb(224, 154, 186)` looks like.

```
.text, #text, p{  
    color:rgb(224, 154, 186)  
}
```

If you want to add a text shadow in that color use the text-shadow property, you can generate a text shadow directly with our [CSS Text Shadow Generator](#).

Here you see how black text with a 4 pixel rgb(224, 154, 186) colored shadow looks like.

```
.shadow{ text-shadow: 4px 4px 2px rgb(224, 154, 186) }
```

Border

The CSS property to change the border of an element to Android 4292909754 is called "border". The border property can be set on classes, ids or directly on the HTML element.

This example shows the color as border, it can be applied via the CSS property "border" or "border-color".

```
.border, #border, table{ border:4px solid rgb(224, 154, 186) }
```

If only the border color should be changed use the property `border-color`.

```
.border{ border-color:rgb(224, 154, 186) }
```

If you want to add a box shadow in that color use:

Here you see how a box with a 4 pixel `rgb(224, 154, 186)` colored shadow looks like.

```
.boxshadow{ -moz-box-shadow:4px 4px 4px  
4px rgb(224, 154, 186); -webkit-box-  
shadow:4px 4px 4px 4px rgb(224, 154, 186);  
box-shadow:4px 4px 4px 4px rgb(224, 154,  
186) }
```

Background

The CSS property to change the background color of an element to Android 4292909754 is called "background". The background property can be set on classes, ids or directly on the HTML element.

```
.background, #background, body{  
background: rgb(224, 154, 186) }
```

If only the background color should be changed can be used:

```
.background{ background-color: rgb(224,  
154, 186) }
```

This example shows the color as background, it is applied via the CSS property "background".

To optimize and compress your CSS code, you can use our [online CSS compressor and optimizer](#) based on csstidy. If you want to create a linear or radial gradient as background or border, check our [CSS Gradient Generator](#).

Hey! You found this booklet interesting? Support Converting Colors with the new Membership Option!

The pro membership hides all ads, plus gives you double the colors in the color bucket, and more awesome pro features!

[Learn more, Memberships starting at \\$2.50/m!](#)

**Follow me
on Twitter!**

@ConvertingColor