

# Converting Colors

Android(4292917170)

Have a look what the booklet for  
Android(4292917170) contains.

<b>Android(4292917170)</b> .....	3
<b><i>Conversions</i></b> .....	4
<b><i>Details</i></b> .....	6
<b><i>Harmonies</i></b> .....	11
<b><i>Previews</i></b> .....	23
<b><i>Color Blindness Simulation</i></b> .....	26
<b><i>CSS Examples</i></b> .....	29

# **Color**

**Android(4292917170)**

# Conversions

## Conversions Part 1

Format	Color
Hex	E0B7B2
RGB	224, 183, 178
RGB Percent	88%, 72%, 70%
CMY	0.1216, 0.2824, 0.3020
CMYK	0.00, 0.18, 0.21, 0.12
HSL	7°, 43%, 79%
HSV	7°, 21%, 88%
XYZ	55.7098, 52.9286, 49.3995
YIQ	194.6890, 26.0410, 7.1370

# Conversions

## Conversions Part 2

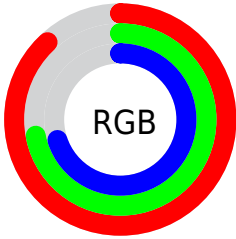
Format	Color
<a href="#">RYB</a>	<a href="#">224, 184, 178</a>
Decimal	<a href="#">14727090</a>
CIELab	<a href="#">77.83, 13.99, 8.10</a>
CIELCh	<a href="#">78, 16.166, 30.073</a>
Yxy	<a href="#">52.9286, 0.3525, 0.3349</a>
Android (android.graphics.Color)	<a href="#">4292917170</a> ( <a href="#">0xFFE0B7B2</a> )
YUV	<a href="#">194.6890, -8.2277, 25.7057</a>
Hunter-Lab	<a href="#">72.7521, 9.3702, 10.6678</a>

# Details

The Android color `4292917170` is a light color, and the websafe version is hex `FFCCCC`. A complement of this color would be `4289911776`, and the grayscale version is `4291019715`.

A 20% lighter version of the original color is `4294963178`, and `4289233533` is the 20% darker color. If you saturate the color by 10%, you get `4292912028`, and if you desaturate by 10%, it is `4292922312`.

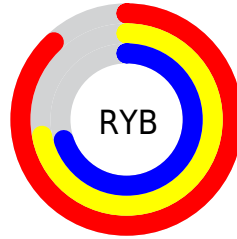
# Distribution



Red (88%)

Green (72%)

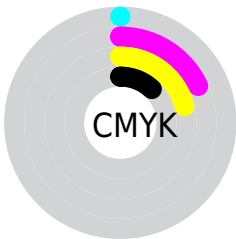
Blue (70%)



Red (88%)

Yellow (72%)

Blue (70%)

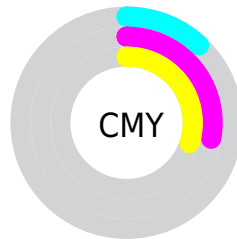


Cyan (0%)

Magenta (18%)

Yellow (21%)

Black (12%)



Cyan (12%)

Magenta (28%)

Yellow (30%)

# Brightness & Saturation Gradients

These gradients show how the Android color 4292917170 changes by changing the brightness by 10 percent. The first figure shows a shift by +10% for each color and the second figure -10%.

Similar to the brightness gradients but the following saturation gradients show a change of the Android color 4292917170 by changing the saturation by 10% instead.



 4292917170

 4292917170

4294967295

 4291075223

 4294963178

 4289233533

 4287457636

 4285747277

 4284102966

 4282524449

 4281011978

 4278976512

 4278190080

 4292917170

 4292917170

 4292912028

 4292922312

 4292906885

 4292927455

 4292901743

 4292932597

 4292896600

 4292935679

 4292891458

 4292886316

 4292881173

 4292876288

# Harmonies

## Analogous

The Analogous color harmony consists of three colors that are next to each other on the color wheel.



4292785857



4292917170



4292459175

# Triad

The Triadic color harmony groups three colors that are evenly spaced from another and form a triangle on the color wheel.



4292917170



4289448113



4289774302

# Complementary

The Complementary color scheme is a pair of colors which are on the opposite of each other on the color wheel.



4292917170



4289911776

# Split Complementary

Split-complementary colors differ from the complementary color scheme. The scheme consists of three colors, the original color and two neighbors of the complement color.



4288726746



4292917170



4288596416

# Square

The Square scheme is like the rectangle color scheme, but the four colors are evenly spaced on the color wheel.



4292917170



4290561190



4288268751



4291018202

# Rectangle

The Rectangle color scheme consists of four colors that form a rectangle on the color wheel.



4292917170



4291935907



4288268751



4289381342



# Sweetspot

The Sweet Spot groups the original color and five complimentary colors.



4292917170



4294963696



4292915931



4286609527



4278190080



4286611584



# Same Dimension

The Same Dimension uses a secret algorithm to generate beautiful new colors.



4292917170



4294952639



4292923058



4285556325



4289729280



4281337088



# Inverse Universe

The Inverse Universe completely reimagines the original color for something new.



4289911776



4290771199



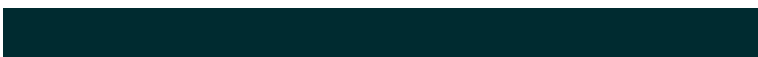
4289905888



4284837744



4278230448

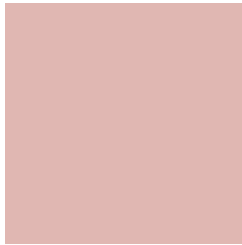


4278201136



# Previews

## White Background



This preview shows how the Android color 4292917170 looks on a white background.

## Color Contrast Check

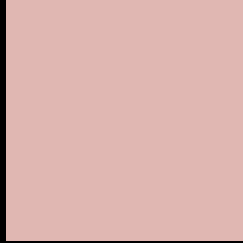
Large Text (above 18pt) WCAG AA × Fail

Any Text WCAG AA × Fail

Large Text (above 18pt) WCAG AAA × Fail

Any Text WCAG AAA × Fail

# Black Background



This preview shows how the Android color 4292917170 looks on a black background.

## Color Contrast Check

Large Text (above 18pt) WCAG AA ✓ Pass

Any Text WCAG AA ✓ Pass

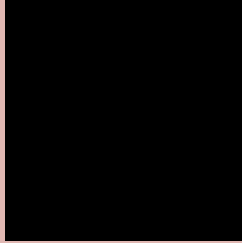
Large Text (above 18pt) WCAG AAA ✓ Pass

Any Text WCAG AAA ✓ Pass

If you want to check with other color combinations, try the [Color Contrast Checker](#).



# Android 4292917170 Background



This preview shows how black text looks on a background with the Android color 4292917170.



This preview shows how white text looks on a background with the Android color 4292917170.

# Color Blindness Simulation

Color vision deficiency is a very complex topic, and I could not describe the different causes any better than Wikipedia does, so if you want to learn more, you should check out their [article about color blindness](#).

## Dichromacy





**Tritanopia**  
4293047490

# Trichromacy



**Original Color**  
4292917170

**Protanomaly**  
4291804597

**Deuteranomaly**  
4292655537

**Tritanomaly**  
4292982204

# Monochromacy



**Original Color**  
4292917170

**Achromatopsia**  
4291019715

**Achromatomaly**  
4291739581

# CSS Examples

## Text

The CSS property to change the color of the text to Android 4292917170 is called "color". The color property can be set on classes, ids or directly on the HTML element.

This example shows how text in the color `rgb(224, 183, 178)` looks like.

```
.text, #text, p{  
    color:rgb(224, 183, 178)  
}
```

If you want to add a text shadow in that color use the text-shadow property, you can generate a text shadow directly with our [CSS Text Shadow Generator](#).

Here you see how black text with a 4 pixel rgb(224, 183, 178) colored shadow looks like.

```
.shadow{ text-shadow: 4px 4px 2px rgb(224, 183, 178) }
```

## Border

The CSS property to change the border of an element to Android 4292917170 is called "border". The border property can be set on classes, ids or directly on the HTML element.

This example shows the color as border, it can be applied via the CSS property "border" or "border-color".

```
.border, #border, table{ border:4px solid rgb(224, 183, 178) }
```

If only the border color should be changed use the property `border-color`.

```
.border{ border-color:rgb(224, 183, 178) }
```

If you want to add a box shadow in that color use:

Here you see how a box with a 4 pixel `rgb(224, 183, 178)` colored shadow looks like.

```
.boxshadow{ -moz-box-shadow:4px 4px 4px  
4px rgb(224, 183, 178); -webkit-box-  
shadow:4px 4px 4px 4px rgb(224, 183, 178);  
box-shadow:4px 4px 4px 4px rgb(224, 183,  
178) }
```

# Background

The CSS property to change the background color of an element to Android 4292917170 is called "background". The background property can be set on classes, ids or directly on the HTML element.

```
.background, #background, body{  
background: rgb(224, 183, 178) }
```

If only the background color should be changed can be used:

```
.background{ background-color: rgb(224,  
183, 178) }
```

This example shows the color as background, it is applied via the CSS property "background".

To optimize and compress your CSS code, you can use our [online CSS compressor and optimizer](#) based on csstidy. If you want to create a linear or radial gradient as background or border, check our [CSS Gradient Generator](#).



Hey! You found this booklet interesting? Support Converting Colors with the new Membership Option!

The pro membership hides all ads, plus gives you double the colors in the color bucket, and more awesome pro features!

**[Learn more, Memberships starting at \\$2.50/m!](#)**

**Follow me  
on Twitter!**

@ConvertingColor