

# Converting Colors

Android(4292918200)

Have a look what the booklet for  
Android(4292918200) contains.

<b>Android(4292918200)</b> .....	3
<b><i>Conversions</i></b> .....	4
<b><i>Details</i></b> .....	6
<b><i>Harmonies</i></b> .....	11
<b><i>Previews</i></b> .....	23
<b><i>Color Blindness Simulation</i></b> .....	26
<b><i>CSS Examples</i></b> .....	29

# **Color**

**Android(4292918200)**

# Conversions

## Conversions Part 1

Format	Color
Hex	E0BBB8
RGB	224, 187, 184
RGB Percent	88%, 73%, 72%
CMY	0.1216, 0.2667, 0.2784
CMYK	0.00, 0.17, 0.18, 0.12
HSL	4°, 39%, 80%
HSV	4°, 18%, 88%
XYZ	57.1625, 54.8486, 52.9215
YIQ	197.7210, 23.0150, 6.9110

# Conversions

## Conversions Part 2

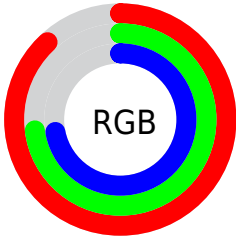
<b>Format</b>	<b>Color</b>
<b>R<sub>YB</sub></b>	224, 187, 184
Decimal	14728120
CIE <sub>Lab</sub>	78.95, 12.76, 6.47
CIE <sub>LCh</sub>	79, 14.307, 26.865
Yxy	54.8486, 0.3466, 0.3326
Android (android.graphics.Color)	4292918200 (0xFFE0BBB8)
YUV	197.7210, -6.7645, 23.0467
Hunter-Lab	74.0599, 8.1691, 9.4746

# Details

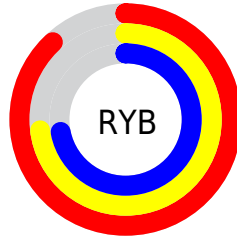
The Android color `4292918200` is a light color, and the websafe version is hex `FFCCCC`. A complement of this color would be `4290305504`, and the grayscale version is `4291217094`.

A 20% lighter version of the original color is `4294964208`, and `4289234563` is the 20% darker color. If you saturate the color by 10%, you get `4292912802`, and if you desaturate by 10%, it is `4292923598`.

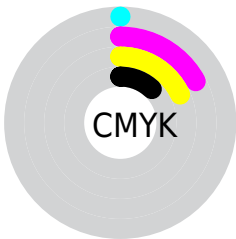
# Distribution



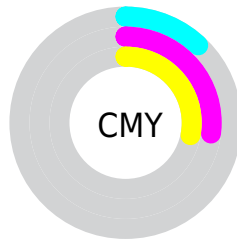
- Red (88%)
- Green (73%)
- Blue (72%)



- Red (88%)
- Yellow (73%)
- Blue (72%)



- Cyan (0%)
- Magenta (17%)
- Yellow (18%)
- Black (12%)



- Cyan (12%)
- Magenta (27%)
- Yellow (28%)

# Brightness & Saturation Gradients

These gradients show how the Android color 4292918200 changes by changing the brightness by 10 percent. The first figure shows a shift by +10% for each color and the second figure -10%.

Similar to the brightness gradients but the following saturation gradients show a change of the Android color 4292918200 by changing the saturation by 10% instead.



 4292918200

 4292918200

4294967295

 4291076253

 4294964208

 4289234563

 4287523946

 4285813842

 4284103995

 4282525477

 4281012752

 4279435264

 4278190080

 4292918200

 4292918200

 4292912802

 4292923598

 4292907659

 4292928741

 4292902261

 4292934139

 4292896862

 4292935679

 4292891464

 4292886322

 4292880923

 4292875525

 4292874496

# Harmonies

## Analogous

The Analogous color harmony consists of three colors that are next to each other on the color wheel.



4292787141



4292918200



4292591278

# Triad

The Triadic color harmony groups three colors that are evenly spaced from another and form a triangle on the color wheel.



4292918200



4289907381



4290037214

# Complementary

The Complementary color scheme is a pair of colors which are on the opposite of each other on the color wheel.



4292918200



4290305504

# Split Complementary

Split-complementary colors differ from the complementary color scheme. The scheme consists of three colors, the original color and two neighbors of the complement color.



4289120729



4292918200



4289121218

# Square

The Square scheme is like the rectangle color scheme, but the four colors are evenly spaced on the color wheel.



4292918200



4290889388



4288793551



4291084763

# Rectangle

The Rectangle color scheme consists of four colors that form a rectangle on the color wheel.



4292918200



4292133290



4288793551



4289644253

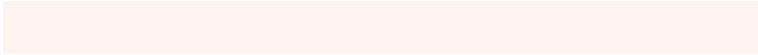


# Sweetspot

The Sweet Spot groups the original color and five complimentary colors.



4292918200



4294964210



4292917469



4286609528



4278190080



4286611584



# Same Dimension

The Same Dimension uses a secret algorithm to generate beautiful new colors.



4292918200



4294954441



4292923320



4285556325



4289727744



4281336832



# Inverse Universe

The Inverse Universe completely reimagines the original color for something new.



4290305504



4291427327



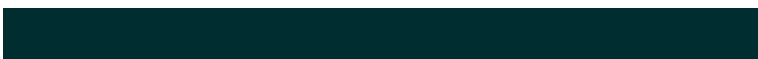
4290300384



4284837744



4278231984

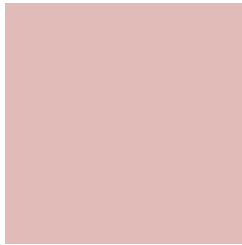


4278201648



# Previews

## White Background



This preview shows how the Android color 4292918200 looks on a white background.

## Color Contrast Check

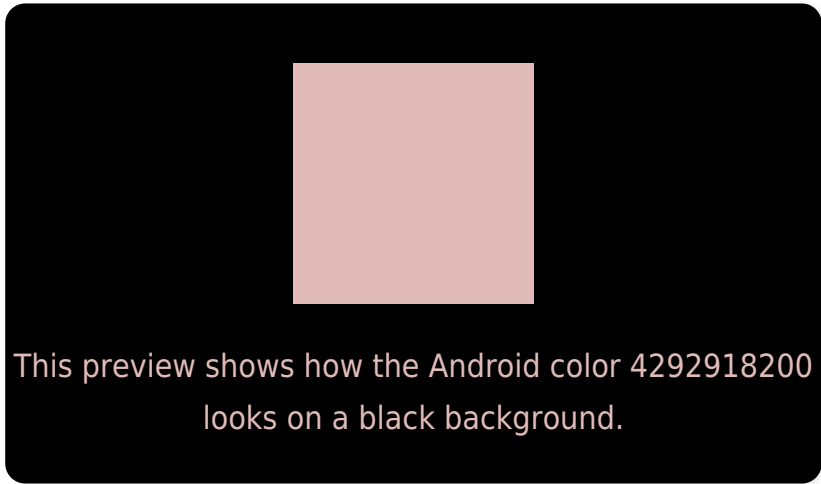
Large Text (above 18pt) WCAG AA × Fail

Any Text WCAG AA × Fail

Large Text (above 18pt) WCAG AAA × Fail

Any Text WCAG AAA × Fail

# Black Background



## Color Contrast Check

Large Text (above 18pt) WCAG AA ✓ Pass

Any Text WCAG AA ✓ Pass

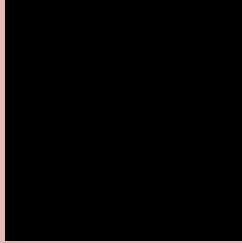
Large Text (above 18pt) WCAG AAA ✓ Pass

Any Text WCAG AAA ✓ Pass

If you want to check with other color combinations, try the [Color Contrast Checker](#).



# Android 4292918200 Background



This preview shows how black text looks on a background with the Android color 4292918200.



This preview shows how white text looks on a background with the Android color 4292918200.

# Color Blindness Simulation

Color vision deficiency is a very complex topic, and I could not describe the different causes any better than Wikipedia does, so if you want to learn more, you should check out their [article about color blindness](#).


## Dichromacy



**Original Color**  
4292918200

**Protanopia**  
4291412924

**Deuteranopia**  
4292591032



**Tritanopia**  
4293048775

# Trichromacy



**Original Color**  
4292918200

**Protanomaly**  
4291936443

**Deuteranomaly**  
4292721848

**Tritanomaly**  
4292983490

# Monochromacy



**Original Color**  
4292918200

**Achromatopsia**  
4291217094

**Achromatomaly**  
4291805889

# CSS Examples

## Text

The CSS property to change the color of the text to Android 4292918200 is called "color". The color property can be set on classes, ids or directly on the HTML element.

This example shows how text in the color `rgb(224, 187, 184)` looks like.

```
.text, #text, p{  
    color:rgb(224, 187, 184)  
}
```

If you want to add a text shadow in that color use the text-shadow property, you can generate a text shadow directly with our [CSS Text Shadow Generator](#).

Here you see how black text with a 4 pixel rgb(224, 187, 184) colored shadow looks like.

```
.shadow{ text-shadow: 4px 4px 2px rgb(224, 187, 184) }
```

## Border

The CSS property to change the border of an element to Android 4292918200 is called "border". The border property can be set on classes, ids or directly on the HTML element.

This example shows the color as border, it can be applied via the CSS property "border" or "border-color".

```
.border, #border, table{ border:4px solid rgb(224, 187, 184) }
```

If only the border color should be changed use the property `border-color`.

```
.border{ border-color:rgb(224, 187, 184) }
```

If you want to add a box shadow in that color use:

Here you see how a box with a 4 pixel `rgb(224, 187, 184)` colored shadow looks like.

```
.boxshadow{ -moz-box-shadow:4px 4px 4px  
4px rgb(224, 187, 184); -webkit-box-  
shadow:4px 4px 4px 4px rgb(224, 187, 184);  
box-shadow:4px 4px 4px 4px rgb(224, 187,  
184) }
```

# Background

The CSS property to change the background color of an element to Android 4292918200 is called "background". The background property can be set on classes, ids or directly on the HTML element.

```
.background, #background, body{  
background: rgb(224, 187, 184) }
```

If only the background color should be changed can be used:

```
.background{ background-color: rgb(224,  
187, 184) }
```

This example shows the color as background, it is applied via the CSS property "background".

To optimize and compress your CSS code, you can use our [online CSS compressor and optimizer](#) based on csstidy. If you want to create a linear or radial gradient as background or border, check our [CSS Gradient Generator](#).



Hey! You found this booklet interesting? Support Converting Colors with the new Membership Option!

The pro membership hides all ads, plus gives you double the colors in the color bucket, and more awesome pro features!

**[Learn more, Memberships starting at \\$2.50/m!](#)**

**Follow me  
on Twitter!**

@ConvertingColor