

# Converting Colors

Android(4292921794)

Have a look what the booklet for  
Android(4292921794) contains.

<b>Android(4292921794)</b> .....	3
<b><i>Conversions</i></b> .....	4
<b><i>Details</i></b> .....	6
<b><i>Harmonies</i></b> .....	11
<b><i>Previews</i></b> .....	23
<b><i>Color Blindness Simulation</i></b> .....	26
<b><i>CSS Examples</i></b> .....	29

# **Color**

**Android(4292921794)**

# Conversions

## Conversions Part 1

Format	Color
Hex	E0C9C2
RGB	224, 201, 194
RGB Percent	88%, 79%, 76%
CMY	0.1216, 0.2118, 0.2392
CMYK	0.00, 0.10, 0.13, 0.12
HSL	14°, 33%, 82%
HSV	14°, 13%, 88%
XYZ	61.3647, 61.5156, 59.6784
YIQ	207.0790, 15.9550, 2.6990

# Conversions

## Conversions Part 2

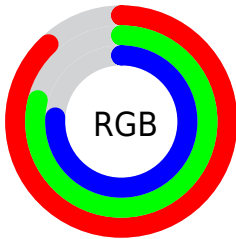
<b>Format</b>	<b>Color</b>
R <sub>Y</sub> B	224, 203, 194
Decimal	14731714
CIE Lab	82.66, 6.91, 6.42
CIE LCh	83, 9.431, 42.904
Yxy	61.5156, 0.3361, 0.3370
Android (android.graphics.Color)	4292921794 (0xFFE0C9C2)
YUV	207.0790, -6.4479, 14.8397
Hunter-Lab	78.4319, 2.4017, 9.7889

# Details

The Android color `4292921794` is a light color, and the websafe version is hex `CCCCCC`. A complement of this color would be `4290959840`, and the grayscale version is `4291809231`.

A 20% lighter version of the original color is `4294967290`, and `4289303436` is the 20% darker color. If you saturate the color by 10%, you get `4292917420`, and if you desaturate by 10%, it is `4292926168`.

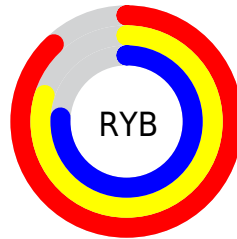
# Distribution



Red (88%)

Green (79%)

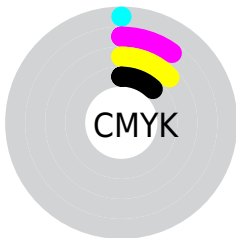
Blue (76%)



Red (88%)

Yellow (80%)

Blue (76%)

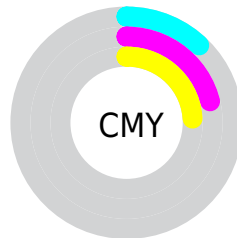


Cyan (0%)

Magenta (10%)

Yellow (13%)

Black (12%)



Cyan (12%)

Magenta (21%)

Yellow (24%)

# Brightness & Saturation Gradients

These gradients show how the Android color 4292921794 changes by changing the brightness by 10 percent. The first figure shows a shift by +10% for each color and the second figure -10%.

Similar to the brightness gradients but the following saturation gradients show a change of the Android color 4292921794 by changing the saturation by 10% instead.



 4292921794

 4292921794

4294967295

 4291079847

 4294967290


 4289303436

 4287527283

 4285816922

 4284172611

 4282659373

 4281146648

 4279829504

 4278190080

 4292921794

 4292921794

 4292917420

 4292926168

 4292913045

 4292930543

 4292908415

 4292935167

 4292904040

 4292935679

 4292899666

 4292895292

 4292890917

 4292886543

 4292883456

# Harmonies

## Analogous

The Analogous color harmony consists of three colors that are next to each other on the color wheel.



4292987082



4292921794



4292529085

# Triad

The Triadic color harmony groups three colors that are evenly spaced from another and form a triangle on the color wheel.



4292921794



4290696136



4291415519

# Complementary

The Complementary color scheme is a pair of colors which are on the opposite of each other on the color wheel.



4292921794



4290959840

# Split Complementary

Split-complementary colors differ from the complementary color scheme. The scheme consists of three colors, the original color and two neighbors of the complement color.



4290760926



4292921794



4290368465

# Square

The Square scheme is like the rectangle color scheme, but the four colors are evenly spaced on the color wheel.



4292921794



4291285441



4290368217



4292135643

# Rectangle

The Rectangle color scheme consists of four colors that form a rectangle on the color wheel.



4292921794



4292136380



4290368217



4291219167



# Sweetspot

The Sweet Spot groups the original color and five complimentary colors.



4292921794



4294965237



4292920025



4286610297



4278190080



4286611584

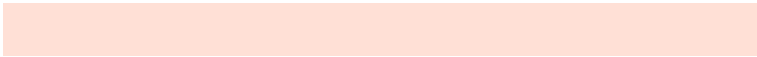


# Same Dimension

The Same Dimension uses a secret algorithm to generate beautiful new colors.



4292921794



4294959318



4292925634



4285556837



4289734912



4281338624

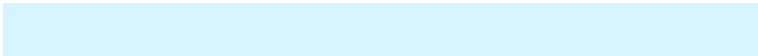


# Inverse Universe

The Inverse Universe completely reimagines the original color for something new.



4290959840



4292277759



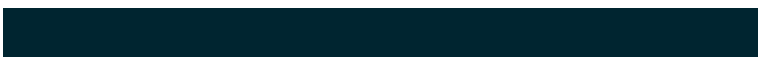
4290956000



4284837488



4278224816

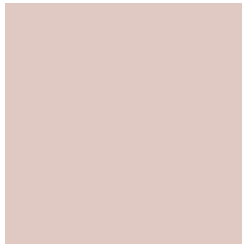


4278199600



# Previews

## White Background



This preview shows how the Android color 4292921794 looks on a white background.

## Color Contrast Check

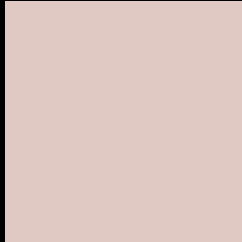
Large Text (above 18pt) WCAG AA × Fail

Any Text WCAG AA × Fail

Large Text (above 18pt) WCAG AAA × Fail

Any Text WCAG AAA × Fail

# Black Background



This preview shows how the Android color 4292921794 looks on a black background.

## Color Contrast Check

Large Text (above 18pt) WCAG AA ✓ Pass

Any Text WCAG AA ✓ Pass

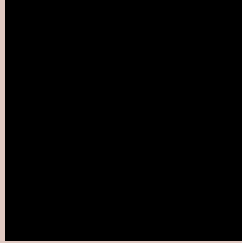
Large Text (above 18pt) WCAG AAA ✓ Pass

Any Text WCAG AAA ✓ Pass

If you want to check with other color combinations, try the [Color Contrast Checker](#).



# Android 4292921794 Background



This preview shows how black text looks on a background with the Android color 4292921794.



This preview shows how white text looks on a background with the Android color 4292921794.

# Color Blindness Simulation

Color vision deficiency is a very complex topic, and I could not describe the different causes any better than Wikipedia does, so if you want to learn more, you should check out their [article about color blindness](#).

## Dichromacy



**Original Color**  
4292921794

**Protanopia**  
4292136388

**Deuteranopia**  
4293314498



**Tritanopia**  
4293117654

# Trichromacy



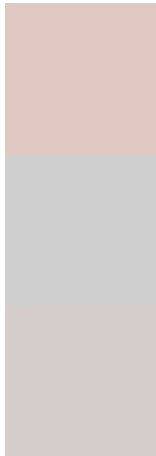
**Original Color**  
4292921794

**Protanomaly**  
4292398275

**Deuteranomaly**  
4293183682

**Tritanomaly**  
4293052367

# Monochromacy



**Original Color**  
4292921794

**Achromatopsia**  
4291809231

**Achromatomaly**  
4292201930

# CSS Examples

## Text

The CSS property to change the color of the text to Android 4292921794 is called "color". The color property can be set on classes, ids or directly on the HTML element.

This example shows how text in the color rgb(224, 201, 194) looks like.

```
.text, #text, p{  
    color:rgb(224, 201, 194)  
}
```

If you want to add a text shadow in that color use the text-shadow property, you can generate a text shadow directly with our [CSS Text Shadow Generator](#).

Here you see how black text with a 4 pixel rgb(224, 201, 194) colored shadow looks like.

```
.shadow{ text-shadow: 4px 4px 2px rgb(224, 201, 194) }
```

## Border

The CSS property to change the border of an element to Android 4292921794 is called "border". The border property can be set on classes, ids or directly on the HTML element.

This example shows the color as border, it can be applied via the CSS property "border" or "border-color".

```
.border, #border, table{ border:4px solid rgb(224, 201, 194) }
```

If only the border color should be changed use the property `border-color`.

```
.border{ border-color:rgb(224, 201, 194) }
```

If you want to add a box shadow in that color use:

Here you see how a box with a 4 pixel `rgb(224, 201, 194)` colored shadow looks like.

```
.boxshadow{ -moz-box-shadow:4px 4px 4px  
4px rgb(224, 201, 194); -webkit-box-  
shadow:4px 4px 4px 4px rgb(224, 201, 194);  
box-shadow:4px 4px 4px 4px rgb(224, 201,  
194) }
```

# Background

The CSS property to change the background color of an element to Android 4292921794 is called "background". The background property can be set on classes, ids or directly on the HTML element.

```
.background, #background, body{  
background: rgb(224, 201, 194) }
```

If only the background color should be changed can be used:

```
.background{ background-color: rgb(224,  
201, 194) }
```

This example shows the color as background, it is applied via the CSS property "background".

To optimize and compress your CSS code, you can use our [online CSS compressor and optimizer](#) based on csstidy. If you want to create a linear or radial gradient as background or border, check our [CSS Gradient Generator](#).



Hey! You found this booklet interesting? Support Converting Colors with the new Membership Option!

The pro membership hides all ads, plus gives you double the colors in the color bucket, and more awesome pro features!

**[Learn more, Memberships starting at \\$2.50/m!](#)**

**Follow me  
on Twitter!**

@ConvertingColor