

# Converting Colors

Android(4292948586)

Have a look what the booklet for  
Android(4292948586) contains.

<b>Android(4292948586)</b> .....	3
<i><b>Conversions</b></i> .....	4
<i><b>Details</b></i> .....	6
<i><b>Harmonies</b></i> .....	11
<i><b>Previews</b></i> .....	23
<i><b>Color Blindness Simulation</b></i> .....	26
<i><b>CSS Examples</b></i> .....	29

# Color

**Android(4292948586)**

# Conversions

## Conversions Part 1

<b>Format</b>	<b>Color</b>
Hex	E1326A
RGB	225, 50, 106
RGB Percent	88%, 20%, 42%
CMY	0.1176, 0.8039, 0.5843
CMYK	0.00, 0.78, 0.53, 0.12
HSL	341°, 74%, 54%
HSV	341°, 78%, 88%
XYZ	34.7935, 19.3294, 15.5328
YIQ	108.7090, 86.3240, 54.5160

# Conversions

## Conversions Part 2

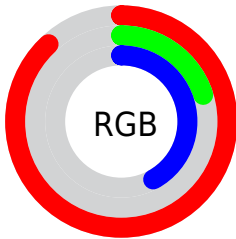
<b>Format</b>	<b>Color</b>
<b>R<sub>YB</sub></b>	225, 50, 106
Decimal	14758506
CIE <sub>Lab</sub>	51.07, 68.58, 11.14
CIE <sub>LCh</sub>	51, 69.478, 9.223
Yxy	19.3294, 0.4995, 0.2775
Android (android.graphics.Color)	4292948586 (0xFFE1326A)
YUV	108.7090, -1.3355, 101.9872
Hunter-Lab	43.9652, 64.3235, 9.8286

# Details

The Android color **4292948586** is a dark color, and the websafe version is hex **CC3366**. The color can be described as dark washed rose. A complement of this color would be **4281524649**, and the grayscale version is **4285361517**.

A 20% lighter version of the original color is **4294930845**, and **4288872507** is the 20% darker color. If you saturate the color by 10%, you get **4292942683**, and if you desaturate by 10%, it is **4292954233**.

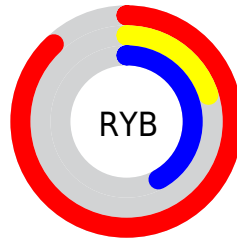
# Distribution



Red (88%)

Green (20%)

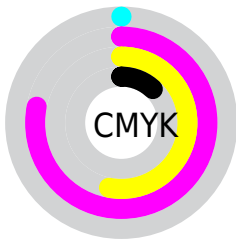
Blue (42%)



Red (88%)

Yellow (20%)

Blue (42%)

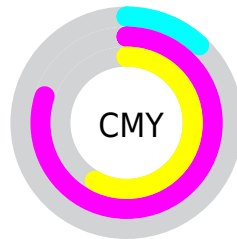


Cyan (0%)

Magenta (78%)

Yellow (53%)

Black (12%)



Cyan (12%)

Magenta (80%)

Yellow (58%)

# Brightness & Saturation Gradients

These gradients show how the Android color 4292948586 changes by changing the brightness by 10 percent. The first figure shows a shift by +10% for each color and the second figure -10%.

Similar to the brightness gradients but the following saturation gradients show a change of the Android color 4292948586 by changing the saturation by 10% instead.



 4292948586

 4292948586

4294967295

 4290904146

 4294930845

 4288872507

 4294938296

 4286906406

 4294945747

 4284940306

 4294953200

 4283039747

 4294960895

 4281008129

 4278190080

 4292948586

 4292948586

 4292942683

 4292954233

 4292937035

 4292960137

 4292935752

 4292965784

 4292971687

 4292977335

 4292983238

 4292988885

 4292994788

 4293000692

# Harmonies

## Analogous

The Analogous color harmony consists of three colors that are next to each other on the color wheel.



4291641509



4292948586



4292233777

# Triad

The Triadic color harmony groups three colors that are evenly spaced from another and form a triangle on the color wheel.



4292948586



4282354179



4278225897

# Complementary

The Complementary color scheme is a pair of colors which are on the opposite of each other on the color wheel.



4292948586



4281524649

# Split Complementary

Split-complementary colors differ from the complementary color scheme. The scheme consists of three colors, the original color and two neighbors of the complement color.



4278227652



4292948586



4278227277

# Square

The Square scheme is like the rectangle color scheme, but the four colors are evenly spaced on the color wheel.



4292948586



4286741760



4278228107



4278221808

# Rectangle

The Rectangle color scheme consists of four colors that form a rectangle on the color wheel.



4292948586



4290862593



4278228107



4278226912



# Sweetspot

The Sweet Spot groups the original color and five complimentary colors.



4292948586



4294952151



4289147617



4286602343



4278190080



4286611584



# Same Dimension

The Same Dimension uses a secret algorithm to generate beautiful new colors.



4292948586



4294906462



4292955954



4285556073



4289724472



4281335824



# Inverse Universe

The Inverse Universe completely reimagines the original color for something new.



4292948586



4294906462



4281517281



4285556073



4289724472

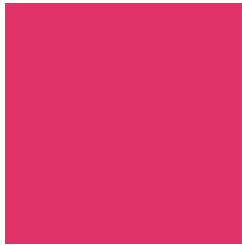


4281335824



# Previews

## White Background



This preview shows how the Android color 4292948586 looks on a white background.

## Color Contrast Check

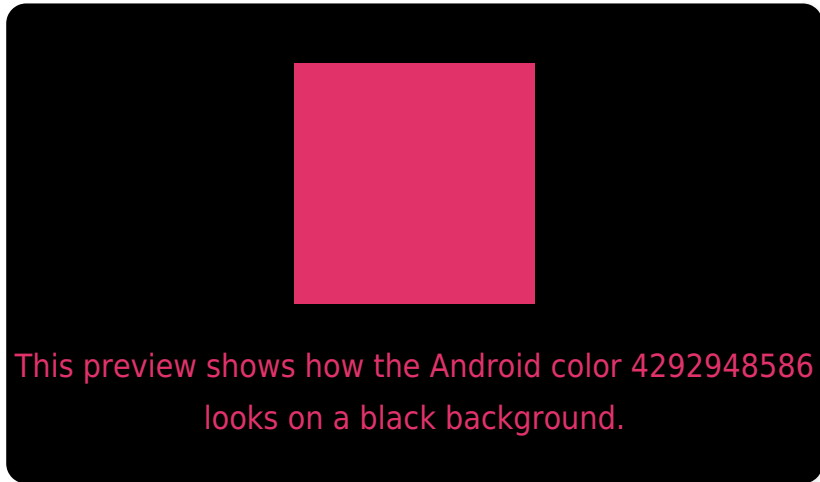
Large Text (above 18pt) WCAG AA ✓ Pass

Any Text WCAG AA ✗ Fail

Large Text (above 18pt) WCAG AAA ✗ Fail

Any Text WCAG AAA ✗ Fail

# Black Background



## Color Contrast Check

Large Text (above 18pt) WCAG AA ✓ Pass

Any Text WCAG AA ✓ Pass

Large Text (above 18pt) WCAG AAA ✓ Pass

Any Text WCAG AAA × Fail

If you want to check with other color combinations, try the [Color Contrast Checker](#).



# Android 4292948586 Background



This preview shows how black text looks on a background with the Android color 4292948586.



This preview shows how white text looks on a background with the Android color 4292948586.

# Color Blindness Simulation

Color vision deficiency is a very complex topic, and I could not describe the different causes any better than Wikipedia does, so if you want to learn more, you should check out their [article about color blindness](#).

## Dichromacy



**Original Color**

4292948586

**Protanopia**

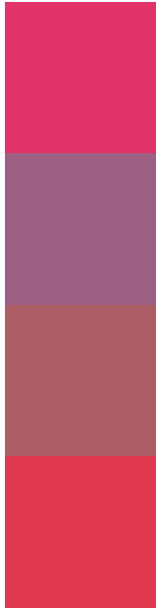
4285954447

**Deuteranopia**

4287526242



# Trichromacy



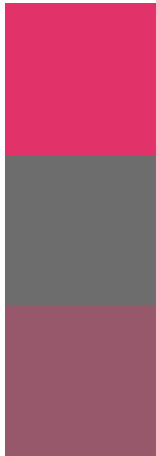
**Original Color**  
4292948586

**Protanomaly**  
4288503682

**Deuteranomaly**  
4289486181

**Tritanomaly**  
4292884815

# Monochromacy



**Original Color**  
4292948586

**Achromatopsia**  
4285361517

**Achromatomaly**  
4288108652

# CSS Examples

## Text

The CSS property to change the color of the text to Android 4292948586 is called "color". The color property can be set on classes, ids or directly on the HTML element.

This example shows how text in the color `rgb(225, 50, 106)` looks like.

```
.text, #text, p{  
    color:rgb(225, 50, 106)  
}
```

If you want to add a text shadow in that color use the text-shadow property, you can generate a text shadow directly with our [CSS Text Shadow Generator](#).

Here you see how black text with a 4 pixel rgb(225, 50, 106) colored shadow looks like.

```
.shadow{ text-shadow: 4px 4px 2px rgb(225, 50, 106) }
```

## Border

The CSS property to change the border of an element to Android 4292948586 is called "border". The border property can be set on classes, ids or directly on the HTML element.

This example shows the color as border, it can be applied via the CSS property "border" or "border-color".

```
.border, #border, table{ border:4px solid rgb(225, 50, 106) }
```

If only the border color should be changed use the property `border-color`.

```
.border{ border-color:rgb(225, 50, 106) }
```

If you want to add a box shadow in that color use:

Here you see how a box with a 4 pixel `rgb(225, 50, 106)` colored shadow looks like.

```
.boxshadow{ -moz-box-shadow:4px 4px 4px  
4px rgb(225, 50, 106); -webkit-box-  
shadow:4px 4px 4px 4px rgb(225, 50, 106);  
box-shadow:4px 4px 4px 4px rgb(225, 50,  
106) }
```

# Background

The CSS property to change the background color of an element to Android 4292948586 is called "background". The background property can be set on classes, ids or directly on the HTML element.

```
.background, #background, body{  
background: rgb(225, 50, 106) }
```

If only the background color should be changed can be used:

```
.background{ background-color: rgb(225, 50,  
106) }
```

This example shows the color as background, it is applied via the CSS property "background".

To optimize and compress your CSS code, you can use our [online CSS compressor and optimizer](#) based on csstidy. If you want to create a linear or radial gradient as background or border, check our [CSS Gradient Generator](#).



Hey! You found this booklet interesting? Support Converting Colors with the new Membership Option!

The pro membership hides all ads, plus gives you double the colors in the color bucket, and more awesome pro features!

**[Learn more, Memberships starting at \\$2.50/m!](#)**

**Follow me  
on Twitter!**

@ConvertingColor