

Converting Colors

Android(4292954485)

Have a look what the booklet for
Android(4292954485) contains.

Android(4292954485)	3
<i>Conversions</i>	4
<i>Details</i>	6
<i>Harmonies</i>	11
<i>Previews</i>	23
<i>Color Blindness Simulation</i>	26
<i>CSS Examples</i>	29

Color

Android(4292954485)

Conversions

Conversions Part 1

Format	Color
Hex	E14975
RGB	225, 73, 117
RGB Percent	88%, 29%, 46%
CMY	0.1176, 0.7137, 0.5412
CMYK	0.00, 0.68, 0.48, 0.12
HSL	343°, 72%, 58%
HSV	343°, 68%, 88%
XYZ	36.6448, 22.0570, 19.1557
YIQ	123.4640, 76.4680, 45.9080

Conversions

Conversions Part 2

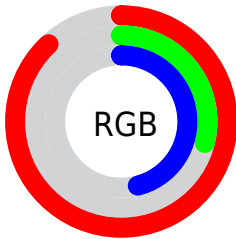
Format	Color
RYB	225, 73, 117
Decimal	14764405
CIELab	54.09, 61.81, 8.77
CIElCh	54, 62.429, 8.079
Yxy	22.0570, 0.4707, 0.2833
Android (android.graphics.Color)	4292954485 (0xFFE14975)
YUV	123.4640, -3.1868, 89.0471
Hunter-Lab	46.9649, 57.0877, 8.6927

Details

The Android color **4292954485** is a dark color, and the websafe version is hex **CC3366**. The color can be described as middle muted rose. A complement of this color would be **4283031989**, and the grayscale version is **4286282619**.

A 20% lighter version of the original color is **4294935209**, and **4288938053** is the 20% darker color. If you saturate the color by 10%, you get **4292948837**, and if you desaturate by 10%, it is **4292960133**.

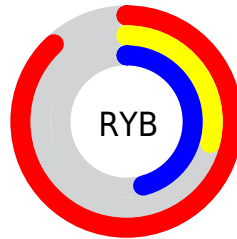
Distribution



Red (88%)

Green (29%)

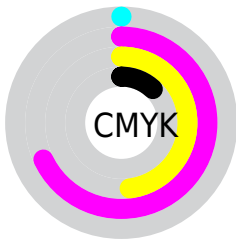
Blue (46%)



Red (88%)

Yellow (29%)

Blue (46%)

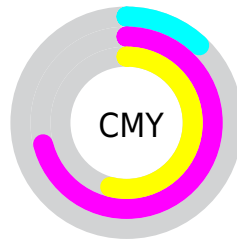


Cyan (0%)

Magenta (68%)

Yellow (48%)

Black (12%)



Cyan (12%)

Magenta (71%)

Yellow (54%)

Brightness & Saturation Gradients

These gradients show how the Android color 4292954485 changes by changing the brightness by 10 percent. The first figure shows a shift by +10% for each color and the second figure -10%.

Similar to the brightness gradients but the following saturation gradients show a change of the Android color 4292954485 by changing the saturation by 10% instead.



4292954485



4292954485

4294967295



4290914653



4294935209



4288938053



4294942660



4286971951



4294950112



4285071387



4294957564



4283236354



4294964991



4281270274



4278190080



4292954485



4292954485



4292948837



4292960133

 4292942933

 4292966037

 4292937029

 4292971685

 4292935745

 4292977589

 4292983493

 4292989141

 4292995045

 4293000693

 4293001215

Harmonies

Analogous

The Analogous color harmony consists of three colors that are next to each other on the color wheel.



4291646379



4292954485



4292433985

Triad

The Triadic color harmony groups three colors that are evenly spaced from another and form a triangle on the color wheel.



4292954485



4283666466



4278227685

Complementary

The Complementary color scheme is a pair of colors which are on the opposite of each other on the color wheel.



4292954485



4283031989

Split Complementary

Split-complementary colors differ from the complementary color scheme. The scheme consists of three colors, the original color and two neighbors of the complement color.



4278229443



4292954485



4278228823

Square

The Square scheme is like the rectangle color scheme, but the four colors are evenly spaced on the color wheel.



4292954485



4287529984



4278229647



4278223853

Rectangle

The Rectangle color scheme consists of four colors that form a rectangle on the color wheel.



4292954485



4291192866



4278229647



4278228444

Sweetspot

The Sweet Spot groups the original color and five complimentary colors.



4292954485



4294954203



4289939937



4286603626



4278190080



4286611584

Same Dimension

The Same Dimension uses a secret algorithm to generate beautiful new colors.



4292954485



4294914156



4292962121



4285556072



4289724467



4281335822

Inverse Universe

The Inverse Universe completely reimagines the original color for something new.



4292954485



4294914156



4283024353



4285556072



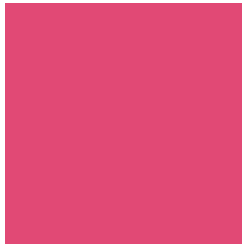
4289724467



4281335822

Previews

White Background



This preview shows how the Android color 4292954485 looks on a white background.

Color Contrast Check

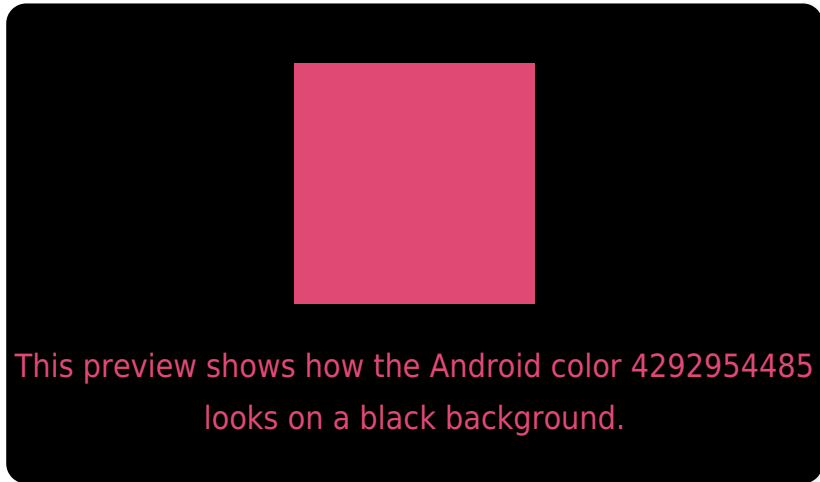
Large Text (above 18pt) WCAG AA ✓ Pass

Any Text WCAG AA ✗ Fail

Large Text (above 18pt) WCAG AAA ✗ Fail

Any Text WCAG AAA ✗ Fail

Black Background



Color Contrast Check

Large Text (above 18pt) WCAG AA ✓ Pass

Any Text WCAG AA ✓ Pass

Large Text (above 18pt) WCAG AAA ✓ Pass

Any Text WCAG AAA × Fail

If you want to check with other color combinations, try the [Color Contrast Checker](#).

Android 4292954485 Background



This preview shows how black text looks on a background with the Android color 4292954485.



This preview shows how white text looks on a background with the Android color 4292954485.

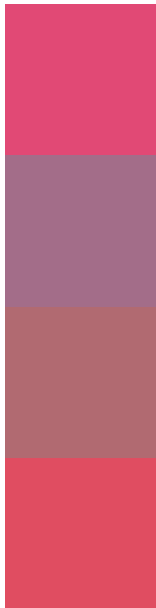
Color Blindness Simulation

Color vision deficiency is a very complex topic, and I could not describe the different causes any better than Wikipedia does, so if you want to learn more, you should check out their [article about color blindness](#).

Dichromacy



Trichromacy



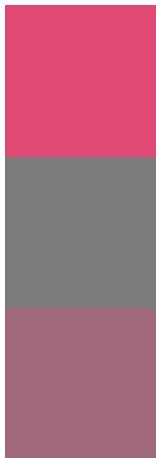
Original Color
4292954485

Protanomaly
4288900489

Deuteranomaly
4289817201

Tritanomaly
4292889953

Monochromacy



Original Color
4292954485

Achromatopsia
4286282619

Achromatomaly
4288702841

CSS Examples

Text

The CSS property to change the color of the text to Android 4292954485 is called "color". The color property can be set on classes, ids or directly on the HTML element.

This example shows how text in the color `rgb(225, 73, 117)` looks like.

```
.text, #text, p{  
    color:rgb(225, 73, 117)  
}
```

If you want to add a text shadow in that color use the text-shadow property, you can generate a text shadow directly with our [CSS Text Shadow Generator](#).

Here you see how black text with a 4 pixel rgb(225, 73, 117) colored shadow looks like.

```
.shadow{ text-shadow: 4px 4px 2px rgb(225, 73, 117) }
```

Border

The CSS property to change the border of an element to Android 4292954485 is called "border". The border property can be set on classes, ids or directly on the HTML element.

This example shows the color as border, it can be applied via the CSS property "border" or "border-color".

```
.border, #border, table{ border:4px solid rgb(225, 73, 117) }
```

If only the border color should be changed use the property `border-color`.

```
.border{ border-color:rgb(225, 73, 117) }
```

If you want to add a box shadow in that color use:

Here you see how a box with a 4 pixel `rgb(225, 73, 117)` colored shadow looks like.

```
.boxshadow{ -moz-box-shadow:4px 4px 4px 4px rgb(225, 73, 117); -webkit-box-shadow:4px 4px 4px 4px rgb(225, 73, 117); box-shadow:4px 4px 4px 4px rgb(225, 73, 117) }
```

Background

The CSS property to change the background color of an element to Android 4292954485 is called "background". The background property can be set on classes, ids or directly on the HTML element.

```
.background, #background, body{  
background: rgb(225, 73, 117) }
```

If only the background color should be changed can be used:

```
.background{ background-color: rgb(225, 73,  
117) }
```

This example shows the color as background, it is applied via the CSS property "background".

To optimize and compress your CSS code, you can use our [online CSS compressor and optimizer](#) based on csstidy. If you want to create a linear or radial gradient as background or border, check our [CSS Gradient Generator](#).

Hey! You found this booklet interesting? Support Converting Colors with the new Membership Option!

The pro membership hides all ads, plus gives you double the colors in the color bucket, and more awesome pro features!

[Learn more, Memberships starting at \\$2.50/m!](#)

**Follow me
on Twitter!**

@ConvertingColor