

# Converting Colors

Android(4292954490)

Have a look what the booklet for  
Android(4292954490) contains.

<b>Android(4292954490)</b> .....	3
<i><b>Conversions</b></i> .....	4
<i><b>Details</b></i> .....	6
<i><b>Harmonies</b></i> .....	11
<i><b>Previews</b></i> .....	23
<i><b>Color Blindness Simulation</b></i> .....	26
<i><b>CSS Examples</b></i> .....	29

# Color

**Android(4292954490)**

# Conversions

## Conversions Part 1

Format	Color
Hex	E1497A
RGB	225, 73, 122
RGB Percent	88%, 29%, 48%
CMY	0.1176, 0.7137, 0.5216
CMYK	0.00, 0.68, 0.46, 0.12
HSL	341°, 72%, 58%
HSV	341°, 68%, 88%
XYZ	36.9467, 22.1778, 20.7458
YIQ	124.0340, 74.8630, 47.4630

# Conversions

## Conversions Part 2

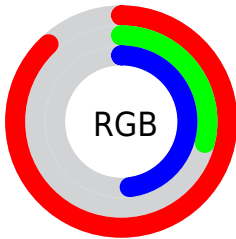
<b>Format</b>	<b>Color</b>
<b>R<sub>YB</sub></b>	225, 73, 122
Decimal	14764410
CIE <sub>Lab</sub>	54.22, 62.26, 5.98
CIE <sub>LCh</sub>	54, 62.542, 5.482
Yxy	22.1778, 0.4626, 0.2777
Android (android.graphics.Color)	4292954490 (0xFFE1497A)
YUV	124.0340, -1.0028, 88.5472
Hunter-Lab	47.0933, 57.6278, 6.8466

# Details

The Android color **4292954490** is a dark color, and the websafe version is hex **CC3366**. The color can be described as middle muted rose. A complement of this color would be **4283031984**, and the grayscale version is **4286348412**.

A 20% lighter version of the original color is **4294935214**, and **4288938058** is the 20% darker color. If you saturate the color by 10%, you get **4292948843**, and if you desaturate by 10%, it is **4292960137**.

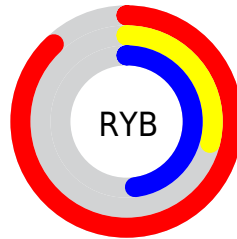
# Distribution



Red (88%)

Green (29%)

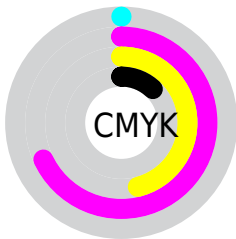
Blue (48%)



Red (88%)

Yellow (29%)

Blue (48%)

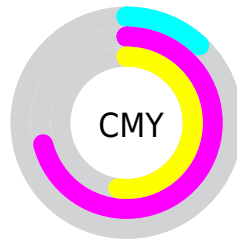


Cyan (0%)

Magenta (68%)

Yellow (46%)

Black (12%)



Cyan (12%)

Magenta (71%)

Yellow (52%)

# Brightness & Saturation Gradients

These gradients show how the Android color 4292954490 changes by changing the brightness by 10 percent. The first figure shows a shift by +10% for each color and the second figure -10%.

Similar to the brightness gradients but the following saturation gradients show a change of the Android color 4292954490 by changing the saturation by 10% instead.



 4292954490

 4292954490

4294967295

 4290914657

 4294935214

 4288938058

 4294942665

 4287037491

 4294950118

 4285071391

 4294957567

 4283236357

 4294965247

 4281335810

 4278190080

 4292954490

 4292954490

 4292948843

 4292960137

 4292942940

 4292966040

 4292937036

 4292971688

 4292935753

 4292977591

 4292983494

 4292989141

 4292995045

 4293000692

 4293001215

# Harmonies

## Analogous

The Analogous color harmony consists of three colors that are next to each other on the color wheel.



4291450288



4292954490



4292564550

# Triad

The Triadic color harmony groups three colors that are evenly spaced from another and form a triangle on the color wheel.



4292954490



4284125213



4278227940

# Complementary

The Complementary color scheme is a pair of colors which are on the opposite of each other on the color wheel.



4292954490



4283031984

# Split Complementary

Split-complementary colors differ from the complementary color scheme. The scheme consists of three colors, the original color and two neighbors of the complement color.



4278229439



4292954490



4278228818

# Square

The Square scheme is like the rectangle color scheme, but the four colors are evenly spaced on the color wheel.



4292954490



4287791616



4278229642



4278224366

# Rectangle

The Rectangle color scheme consists of four colors that form a rectangle on the color wheel.



4292954490



4291454502



4278229642



4278228698



# Sweetspot

The Sweet Spot groups the original color and five complimentary colors.



4292954490



4294954204



4289612257



4286603627



4278190080



4286611584



# Same Dimension

The Same Dimension uses a secret algorithm to generate beautiful new colors.



4292954490



4294914163



4292960841



4285556073



4289724473



4281335824



# Inverse Universe

The Inverse Universe completely reimagines the original color for something new.



4292954490



4294914163



4283025633



4285556073



4289724473



4281335824



# Previews

## White Background



This preview shows how the Android color 4292954490 looks on a white background.

## Color Contrast Check

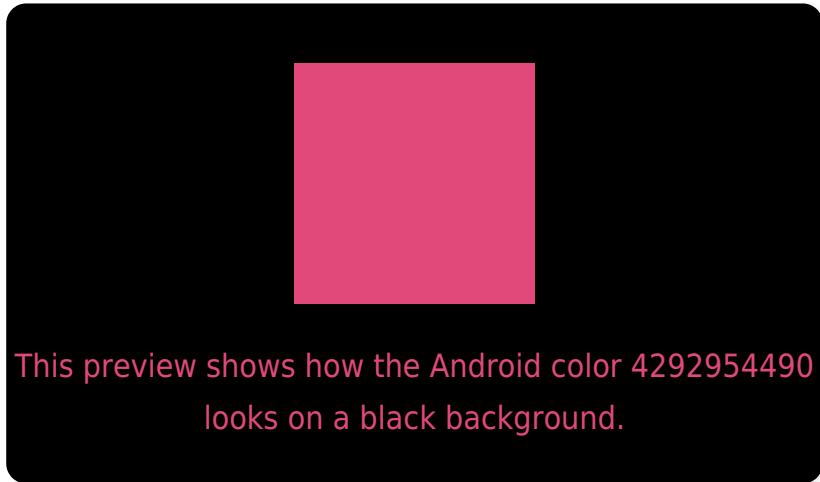
Large Text (above 18pt) WCAG AA ✓ Pass

Any Text WCAG AA ✗ Fail

Large Text (above 18pt) WCAG AAA ✗ Fail

Any Text WCAG AAA ✗ Fail

# Black Background



## Color Contrast Check

Large Text (above 18pt) WCAG AA ✓ Pass

Any Text WCAG AA ✓ Pass

Large Text (above 18pt) WCAG AAA ✓ Pass

Any Text WCAG AAA × Fail

If you want to check with other color combinations, try the [Color Contrast Checker](#).



# Android 4292954490 Background



This preview shows how black text looks on a background with the Android color 4292954490.



This preview shows how white text looks on a background with the Android color 4292954490.

# Color Blindness Simulation

Color vision deficiency is a very complex topic, and I could not describe the different causes any better than Wikipedia does, so if you want to learn more, you should check out their [article about color blindness](#).

## Dichromacy



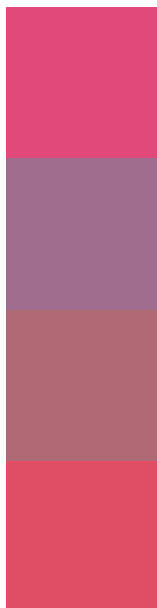
**Original Color**  
4292954490

**Protanopia**  
4286415258

**Deuteranopia**  
4287921523



# Trichromacy



**Original Color**

4292954490

**Protanomaly**

4288769422

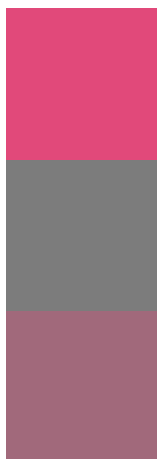
**Deuteranomaly**

4289751670

**Tritanomaly**

4292890211

# Monochromacy



**Original Color**

4292954490

**Achromatopsia**

4286348412

**Achromatomaly**

4288768379

# CSS Examples

## Text

The CSS property to change the color of the text to Android 4292954490 is called "color". The color property can be set on classes, ids or directly on the HTML element.

This example shows how text in the color `rgb(225, 73, 122)` looks like.

```
.text, #text, p{  
    color:rgb(225, 73, 122)  
}
```

If you want to add a text shadow in that color use the text-shadow property, you can generate a text shadow directly with our [CSS Text Shadow Generator](#).

Here you see how black text with a 4 pixel rgb(225, 73, 122) colored shadow looks like.

```
.shadow{ text-shadow: 4px 4px 2px rgb(225, 73, 122) }
```

## Border

The CSS property to change the border of an element to Android 4292954490 is called "border". The border property can be set on classes, ids or directly on the HTML element.

This example shows the color as border, it can be applied via the CSS property "border" or "border-color".

```
.border, #border, table{ border:4px solid rgb(225, 73, 122) }
```

If only the border color should be changed use the property border-color.

```
.border{ border-color:rgb(225, 73, 122) }
```

If you want to add a box shadow in that color use:

Here you see how a box with a 4 pixel rgb(225, 73, 122) colored shadow looks like.

```
.boxshadow{ -moz-box-shadow:4px 4px 4px  
4px rgb(225, 73, 122); -webkit-box-  
shadow:4px 4px 4px 4px rgb(225, 73, 122);  
box-shadow:4px 4px 4px 4px rgb(225, 73,  
122) }
```

# Background

The CSS property to change the background color of an element to Android 4292954490 is called "background". The background property can be set on classes, ids or directly on the HTML element.

```
.background, #background, body{  
background: rgb(225, 73, 122) }
```

If only the background color should be changed can be used:

```
.background{ background-color: rgb(225, 73,  
122) }
```

This example shows the color as background, it is applied via the CSS property "background".

To optimize and compress your CSS code, you can use our [online CSS compressor and optimizer](#) based on csstidy. If you want to create a linear or radial gradient as background or border, check our [CSS Gradient Generator](#).



Hey! You found this booklet interesting? Support Converting Colors with the new Membership Option!

The pro membership hides all ads, plus gives you double the colors in the color bucket, and more awesome pro features!

**[Learn more, Memberships starting at \\$2.50/m!](#)**

**Follow me  
on Twitter!**

@ConvertingColor