

Converting Colors

Android(4292963965)

Have a look what the booklet for
Android(4292963965) contains.

| | |
|--|----|
| Android(4292963965) | 3 |
| <i>Conversions</i> | 4 |
| <i>Details</i> | 6 |
| <i>Harmonies</i> | 11 |
| <i>Previews</i> | 23 |
| <i>Color Blindness Simulation</i> | 26 |
| <i>CSS Examples</i> | 29 |

Color

Android(4292963965)

Conversions

Conversions Part 1

| Format | Color |
|-------------|----------------------------|
| Hex | E16E7D |
| RGB | 225, 110, 125 |
| RGB Percent | 88%, 43%, 49% |
| CMY | 0.1176, 0.5686, 0.5098 |
| CMYK | 0.00, 0.51, 0.44, 0.12 |
| HSL | 352°, 66%, 66% |
| HSV | 352°, 51%, 88% |
| XYZ | 40.3289, 28.6401, 22.8046 |
| YIQ | 146.0950, 63.7250, 29.0450 |

Conversions

Conversions Part 2

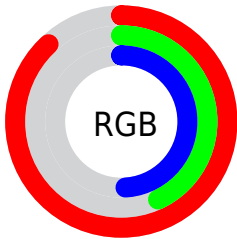
| Format | Color |
|-------------------------------------|--------------------------------|
| R _Y B | 225, 110, 125 |
| Decimal | 14773885 |
| CIE Lab | 60.46, 46.14, 13.06 |
| CIE LCh | 60, 47.951, 15.804 |
| Yxy | 28.6401, 0.4394, 0.3121 |
| Android (android.graphics.Color) | 4292963965 (0xFFE16E7D) |
| YUV | 146.0950, -10.3998, 69.1997 |
| Hunter-Lab | 53.5164, 40.8604, 12.1967 |

Details

The Android color `4292963965` is a light color, and the websafe version is hex `CC6666`. A complement of this color would be `4285456850`, and the grayscale version is `4287795858`.

A 20% lighter version of the original color is `4294943921`, and `4289083724` is the 20% darker color. If you saturate the color by 10%, you get `4292958313`, and if you desaturate by 10%, it is `4292969873`.

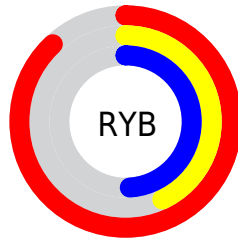
Distribution



Red (88%)

Green (43%)

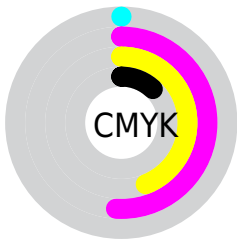
Blue (49%)



Red (88%)

Yellow (43%)

Blue (49%)

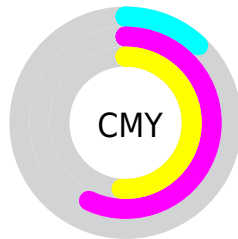


Cyan (0%)

Magenta (51%)

Yellow (44%)

Black (12%)



Cyan (12%)

Magenta (57%)

Yellow (51%)

Brightness & Saturation Gradients

These gradients show how the Android color 4292963965 changes by changing the brightness by 10 percent. The first figure shows a shift by +10% for each color and the second figure -10%.

Similar to the brightness gradients but the following saturation gradients show a change of the Android color 4292963965 by changing the saturation by 10% instead.



4292963965



4292963965

4294967295



4290991204



4294943921



4289083724



4294951117



4287175990



4294958569



4285268001



4294966015



4283498506



4281794562



4279042048



4278190080



4292963965



4292963965

 4292958313

 4292969873

 4292952406

 4292975524

 4292946754

 4292981432

 4292940847

 4292987083

 4292935709

 4292992991

 4292998642

 4293001215

Harmonies

Analogous

The Analogous color harmony consists of three colors that are next to each other on the color wheel.



4292243624



4292963965



4292245847

Triad

The Triadic color harmony groups three colors that are evenly spaced from another and form a triangle on the color wheel.



4292963965



4284850260



4278230243

Complementary

The Complementary color scheme is a pair of colors which are on the opposite of each other on the color wheel.



4292963965



4285456850

Split Complementary

Split-complementary colors differ from the complementary color scheme. The scheme consists of three colors, the original color and two neighbors of the complement color.



4278232269



4292963965



4278494844

Square

The Square scheme is like the rectangle color scheme, but the four colors are evenly spaced on the color wheel.



4292963965



4287993404



4278232999



4285698019

Rectangle

The Rectangle color scheme consists of four colors that form a rectangle on the color wheel.



4292963965



4291199812



4278232999



4278231006

Sweetspot

The Sweet Spot groups the original color and five complimentary colors.



4292963965



4294957534



4291981025



4286605676



4278190080



4286611584

Same Dimension

The Same Dimension uses a secret algorithm to generate beautiful new colors.



4292963965



4294927224



4292974702



4285556070



4289724439



4281335814

Inverse Universe

The Inverse Universe completely reimagines the original color for something new.



4292963965



4294927224



4285446113



4285556070



4289724439



4281335814

Previews

White Background



This preview shows how the Android color 4292963965 looks on a white background.

Color Contrast Check

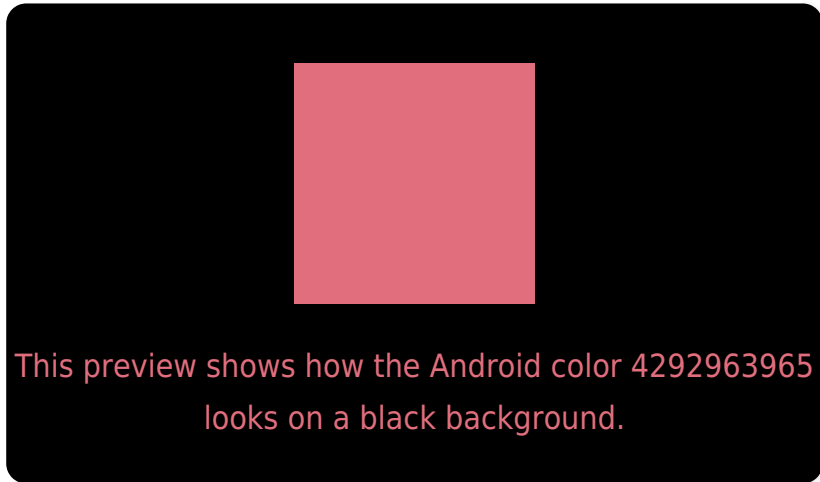
Large Text (above 18pt) WCAG AA ✓ Pass

Any Text WCAG AA ✗ Fail

Large Text (above 18pt) WCAG AAA ✗ Fail

Any Text WCAG AAA ✗ Fail

Black Background



Color Contrast Check

Large Text (above 18pt) WCAG AA ✓ Pass

Any Text WCAG AA ✓ Pass

Large Text (above 18pt) WCAG AAA ✓ Pass

Any Text WCAG AAA × Fail

If you want to check with other color combinations, try the [Color Contrast Checker](#).

Android 4292963965 Background



This preview shows how black text looks on a background with the Android color 4292963965.



This preview shows how white text looks on a background with the Android color 4292963965.

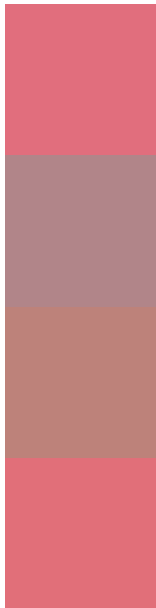
Color Blindness Simulation

Color vision deficiency is a very complex topic, and I could not describe the different causes any better than Wikipedia does, so if you want to learn more, you should check out their [article about color blindness](#).

Dichromacy



Trichromacy



Original Color
4292963965

Protanomaly
4289824137

Deuteranomaly
4290609786

Tritanomaly
4292964217

Monochromacy



Original Color
4292963965

Achromatopsia
4287795858

Achromatomaly
4289693066

CSS Examples

Text

The CSS property to change the color of the text to Android 4292963965 is called "color". The color property can be set on classes, ids or directly on the HTML element.

This example shows how text in the color `rgb(225, 110, 125)` looks like.

```
.text, #text, p{  
    color:rgb(225, 110, 125)  
}
```

If you want to add a text shadow in that color use the text-shadow property, you can generate a text shadow directly with our [CSS Text Shadow Generator](#).

Here you see how black text with a 4 pixel rgb(225, 110, 125) colored shadow looks like.

```
.shadow{ text-shadow: 4px 4px 2px rgb(225, 110, 125) }
```

Border

The CSS property to change the border of an element to Android 4292963965 is called "border". The border property can be set on classes, ids or directly on the HTML element.

This example shows the color as border, it can be applied via the CSS property "border" or "border-color".

```
.border, #border, table{ border:4px solid rgb(225, 110, 125) }
```

If only the border color should be changed use the property `border-color`.

```
.border{ border-color:rgb(225, 110, 125) }
```

If you want to add a box shadow in that color use:

Here you see how a box with a 4 pixel `rgb(225, 110, 125)` colored shadow looks like.

```
.boxshadow{ -moz-box-shadow:4px 4px 4px  
4px rgb(225, 110, 125); -webkit-box-  
shadow:4px 4px 4px 4px rgb(225, 110, 125);  
box-shadow:4px 4px 4px 4px rgb(225, 110,  
125) }
```

Background

The CSS property to change the background color of an element to Android 4292963965 is called "background". The background property can be set on classes, ids or directly on the HTML element.

```
.background, #background, body{  
background: rgb(225, 110, 125) }
```

If only the background color should be changed can be used:

```
.background{ background-color: rgb(225,  
110, 125) }
```

This example shows the color as background, it is applied via the CSS property "background".

To optimize and compress your CSS code, you can use our [online CSS compressor and optimizer](#) based on csstidy. If you want to create a linear or radial gradient as background or border, check our [CSS Gradient Generator](#).

Hey! You found this booklet interesting? Support Converting Colors with the new Membership Option!

The pro membership hides all ads, plus gives you double the colors in the color bucket, and more awesome pro features!

[Learn more, Memberships starting at \\$2.50/m!](#)

**Follow me
on Twitter!**

@ConvertingColor