

Converting Colors

Android(4292963976)

Have a look what the booklet for
Android(4292963976) contains.

Android(4292963976)	3
<i>Conversions</i>	4
<i>Details</i>	6
<i>Harmonies</i>	11
<i>Previews</i>	23
<i>Color Blindness Simulation</i>	26
<i>CSS Examples</i>	29

Color

Android(4292963976)

Conversions

Conversions Part 1

Format	Color
Hex	E16E88
RGB	225, 110, 136
RGB Percent	88%, 43%, 53%
CMY	0.1176, 0.5686, 0.4667
CMYK	0.00, 0.51, 0.40, 0.12
HSL	346°, 66%, 66%
HSV	346°, 51%, 88%
XYZ	41.0712, 28.9370, 26.7133
YIQ	147.3490, 60.1940, 32.4660

Conversions

Conversions Part 2

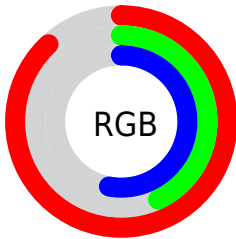
Format	Color
R_{YB}	225, 110, 136
Decimal	14773896
CIE _{Lab}	60.73, 47.29, 7.08
CIE _{LCh}	61, 47.822, 8.516
Yxy	28.9370, 0.4246, 0.2992
Android (android.graphics.Color)	4292963976 (0xFFE16E88)
YUV	147.3490, -5.5951, 68.0999
Hunter-Lab	53.7931, 42.1473, 8.2122

Details

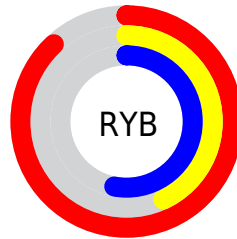
The Android color `4292963976` is a light color, and the websafe version is hex `CC6666`. A complement of this color would be `4285456839`, and the grayscale version is `4287861651`.

A 20% lighter version of the original color is `4294943933`, and `4289083734` is the 20% darker color. If you saturate the color by 10%, you get `4292958327`, and if you desaturate by 10%, it is `4292969881`.

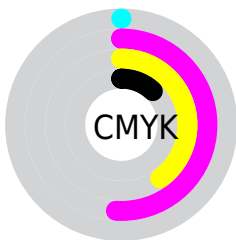
Distribution



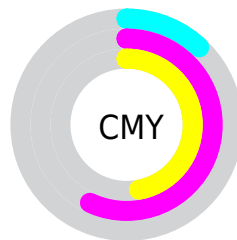
- Red (88%)
- Green (43%)
- Blue (53%)



- Red (88%)
- Yellow (43%)
- Blue (53%)



- Cyan (0%)
- Magenta (51%)
- Yellow (40%)
- Black (12%)



- Cyan (12%)
- Magenta (57%)
- Yellow (47%)

Brightness & Saturation Gradients

These gradients show how the Android color 4292963976 changes by changing the brightness by 10 percent. The first figure shows a shift by +10% for each color and the second figure -10%.

Similar to the brightness gradients but the following saturation gradients show a change of the Android color 4292963976 by changing the saturation by 10% instead.

 4292963976

 4292963976

4294967295

 4290990959

 4294943933

 4289083734

 4294951385

 4287175743

 4294958581

 4285333546

 4294966015

 4283498517

 4281925634

 4279304192

 4278190080

 4292963976

 4292963976

 4292958327

 4292969881

 4292952421

 4292975531

 4292946772

 4292981436

 4292940866

 4292987086

 4292935731

 4292992991

 4292998640

 4293001215

Harmonies

Analogous

The Analogous color harmony consists of three colors that are next to each other on the color wheel.



4291851186



4292963976



4292572768

Triad

The Triadic color harmony groups three colors that are evenly spaced from another and form a triangle on the color wheel.



4292963976



4285701966



4278231008

Complementary

The Complementary color scheme is a pair of colors which are on the opposite of each other on the color wheel.



4292963976



4285456839

Split Complementary

Split-complementary colors differ from the complementary color scheme. The scheme consists of three colors, the original color and two neighbors of the complement color.



4278232774



4292963976



4281443698

Square

The Square scheme is like the rectangle color scheme, but the four colors are evenly spaced on the color wheel.



4292963976



4288648251



4278233246



4284388326

Rectangle

The Rectangle color scheme consists of four colors that form a rectangle on the color wheel.



4292963976



4291657803



4278233246



4278231770

Sweetspot

The Sweet Spot groups the original color and five complimentary colors.



4292963976



4294957537



4291194593



4286605678



4278190080



4286611584

Same Dimension

The Same Dimension uses a secret algorithm to generate beautiful new colors.



4292963976



4294927239



4292971886



4285556072



4289724456



4281335819

Inverse Universe

The Inverse Universe completely reimagines the original color for something new.



4292963976



4294927239



4285448929



4285556072



4289724456



4281335819

Previews

White Background



This preview shows how the Android color 4292963976 looks on a white background.

Color Contrast Check

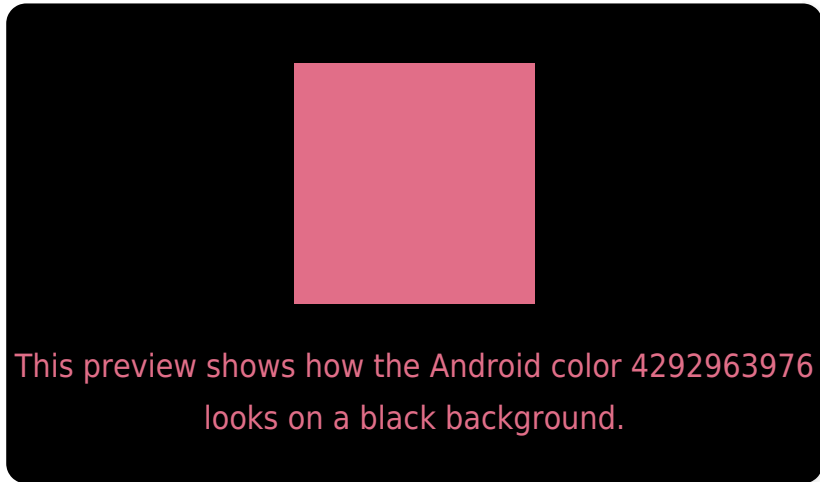
Large Text (above 18pt) WCAG AA ✓ Pass

Any Text WCAG AA ✗ Fail

Large Text (above 18pt) WCAG AAA ✗ Fail

Any Text WCAG AAA ✗ Fail

Black Background



Color Contrast Check

Large Text (above 18pt) WCAG AA ✓ Pass

Any Text WCAG AA ✓ Pass

Large Text (above 18pt) WCAG AAA ✓ Pass

Any Text WCAG AAA × Fail

If you want to check with other color combinations, try the [Color Contrast Checker](#).

Android 4292963976 Background



This preview shows how black text looks on a background with the Android color 4292963976.



This preview shows how white text looks on a background with the Android color 4292963976.

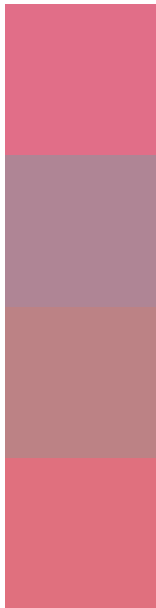
Color Blindness Simulation

Color vision deficiency is a very complex topic, and I could not describe the different causes any better than Wikipedia does, so if you want to learn more, you should check out their [article about color blindness](#).

Dichromacy



Trichromacy



Original Color
4292963976

Protanomaly
4289693077

Deuteranomaly
4290544261

Tritanomaly
4292898942

Monochromacy



Original Color
4292963976

Achromatopsia
4287861651

Achromatomaly
4289693327

CSS Examples

Text

The CSS property to change the color of the text to Android 4292963976 is called "color". The color property can be set on classes, ids or directly on the HTML element.

This example shows how text in the color `rgb(225, 110, 136)` looks like.

```
.text, #text, p{  
    color:rgb(225, 110, 136)  
}
```

If you want to add a text shadow in that color use the text-shadow property, you can generate a text shadow directly with our [CSS Text Shadow Generator](#).

Here you see how black text with a 4 pixel rgb(225, 110, 136) colored shadow looks like.

```
.shadow{ text-shadow: 4px 4px 2px rgb(225, 110, 136) }
```

Border

The CSS property to change the border of an element to Android 4292963976 is called "border". The border property can be set on classes, ids or directly on the HTML element.

This example shows the color as border, it can be applied via the CSS property "border" or "border-color".

```
.border, #border, table{ border:4px solid rgb(225, 110, 136) }
```

If only the border color should be changed use the property `border-color`.

```
.border{ border-color:rgb(225, 110, 136) }
```

If you want to add a box shadow in that color use:

Here you see how a box with a 4 pixel `rgb(225, 110, 136)` colored shadow looks like.

```
.boxshadow{ -moz-box-shadow:4px 4px 4px 4px rgb(225, 110, 136); -webkit-box-shadow:4px 4px 4px 4px rgb(225, 110, 136); box-shadow:4px 4px 4px 4px rgb(225, 110, 136) }
```

Background

The CSS property to change the background color of an element to Android 4292963976 is called "background". The background property can be set on classes, ids or directly on the HTML element.

```
.background, #background, body{  
background: rgb(225, 110, 136) }
```

If only the background color should be changed can be used:

```
.background{ background-color: rgb(225,  
110, 136) }
```

This example shows the color as background, it is applied via the CSS property "background".

To optimize and compress your CSS code, you can use our [online CSS compressor and optimizer](#) based on csstidy. If you want to create a linear or radial gradient as background or border, check our [CSS Gradient Generator](#).

Hey! You found this booklet interesting? Support Converting Colors with the new Membership Option!

The pro membership hides all ads, plus gives you double the colors in the color bucket, and more awesome pro features!

[Learn more, Memberships starting at \\$2.50/m!](#)

**Follow me
on Twitter!**

@ConvertingColor