

Converting Colors

Android(4292965768)

Have a look what the booklet for
Android(4292965768) contains.

Android(4292965768)	3
<i>Conversions</i>	4
<i>Details</i>	6
<i>Harmonies</i>	11
<i>Previews</i>	23
<i>Color Blindness Simulation</i>	26
<i>CSS Examples</i>	29

Color

Android(4292965768)

Conversions

Conversions Part 1

Format	Color
Hex	E17588
RGB	225, 117, 136
RGB Percent	88%, 46%, 53%
CMY	0.1176, 0.5412, 0.4667
CMYK	0.00, 0.48, 0.40, 0.12
HSL	349°, 64%, 67%
HSV	349°, 48%, 88%
XYZ	41.8566, 30.5077, 26.9750
YIQ	151.4580, 58.2690, 28.8050

Conversions

Conversions Part 2

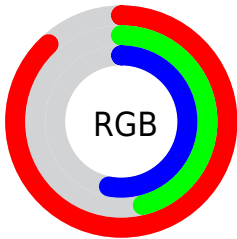
Format	Color
R_{YB}	225, 117, 136
Decimal	14775688
CIE _{Lab}	62.09, 43.81, 9.03
CIE _{LCh}	62, 44.730, 11.641
Yxy	30.5077, 0.4213, 0.3071
Android (android.graphics.Color)	4292965768 (0xFFE17588)
YUV	151.4580, -7.6208, 64.4963
Hunter-Lab	55.2338, 38.6095, 9.7076

Details

The Android color **4292965768** is a light color, and the websafe version is hex **CC6666**. A complement of this color would be **4285915598**, and the grayscale version is **4288124823**.

A 20% lighter version of the original color is **4294945725**, and **4289085782** is the 20% darker color. If you saturate the color by 10%, you get **4292960117**, and if you desaturate by 10%, it is **4292971419**.

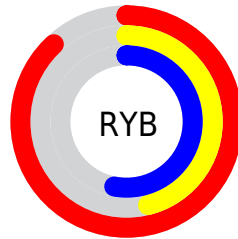
Distribution



Red (88%)

Green (46%)

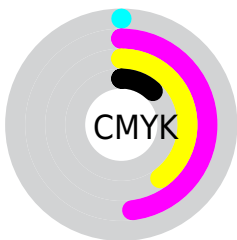
Blue (53%)



Red (88%)

Yellow (46%)

Blue (53%)

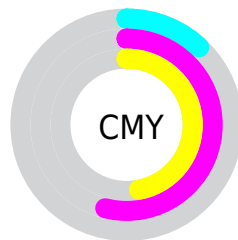


Cyan (0%)

Magenta (48%)

Yellow (40%)

Black (12%)



Cyan (12%)

Magenta (54%)

Yellow (47%)

Brightness & Saturation Gradients

These gradients show how the Android color 4292965768 changes by changing the brightness by 10 percent. The first figure shows a shift by +10% for each color and the second figure -10%.

Similar to the brightness gradients but the following saturation gradients show a change of the Android color 4292965768 by changing the saturation by 10% instead.

 4292965768

 4292965768

4294967295

 4290993007

 4294945725

 4289085782

 4294952921

 4287243839

 4294960373

 4285400106

 4283564053

 4281925633

 4279566336

 4278190080

 4292965768

 4292965768

 4292960117

 4292971419

 4292954211

 4292977325

 4292948304

 4292983232

 4292942654

 4292988882

 4292937003

 4292994789

 4292935720

 4293000439

 4293001215

Harmonies

Analogous

The Analogous color harmony consists of three colors that are next to each other on the color wheel.



4292049328



4292965768



4292509027

Triad

The Triadic color harmony groups three colors that are evenly spaced from another and form a triangle on the color wheel.



4292965768



4285768537



4278231521

Complementary

The Complementary color scheme is a pair of colors which are on the opposite of each other on the color wheel.



4292965768



4285915598

Split Complementary

Split-complementary colors differ from the complementary color scheme. The scheme consists of three colors, the original color and two neighbors of the complement color.



4278233290



4292965768



4281903484

Square

The Square scheme is like the rectangle color scheme, but the four colors are evenly spaced on the color wheel.



4292965768



4288649542



4278233765



4285568484

Rectangle

The Rectangle color scheme consists of four colors that form a rectangle on the color wheel.



4292965768



4291593809



4278233765



4278232283

Sweetspot

The Sweet Spot groups the original color and five complimentary colors.



4292965768



4294958050



4291655137



4286605934



4278190080



4286611584

Same Dimension

The Same Dimension uses a secret algorithm to generate beautiful new colors.



4292965768



4294929285



4292974453



4285556071



4289724447



4281335817

Inverse Universe

The Inverse Universe completely reimagines the original color for something new.



4292965768



4294929285



4285906913



4285556071



4289724447



4281335817

Previews

White Background



This preview shows how the Android color 4292965768 looks on a white background.

Color Contrast Check

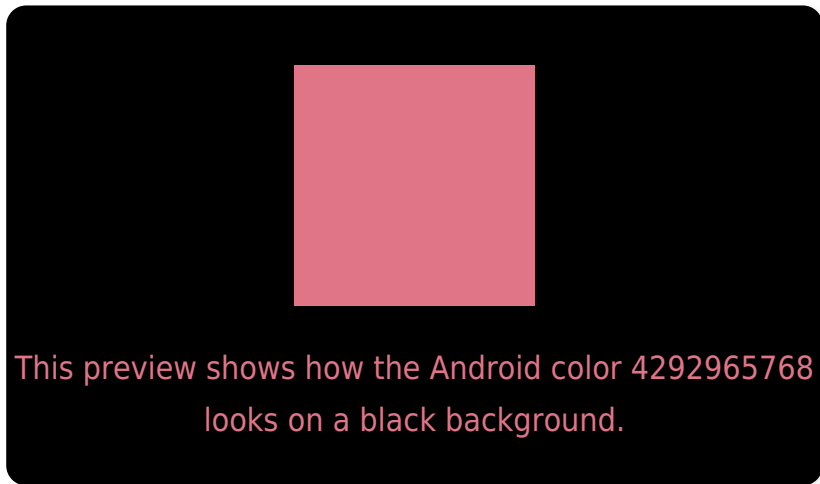
Large Text (above 18pt) WCAG AA × Fail

Any Text WCAG AA × Fail

Large Text (above 18pt) WCAG AAA × Fail

Any Text WCAG AAA × Fail

Black Background



Color Contrast Check

Large Text (above 18pt) WCAG AA ✓ Pass

Any Text WCAG AA ✓ Pass

Large Text (above 18pt) WCAG AAA ✓ Pass

Any Text WCAG AAA ✓ Pass

If you want to check with other color combinations, try the [Color Contrast Checker](#).

Android 4292965768 Background



This preview shows how black text looks on a background with the Android color 4292965768.

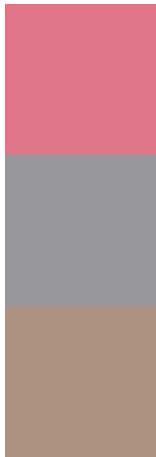


This preview shows how white text looks on a background with the Android color 4292965768.

Color Blindness Simulation

Color vision deficiency is a very complex topic, and I could not describe the different causes any better than Wikipedia does, so if you want to learn more, you should check out their [article about color blindness](#).

Dichromacy

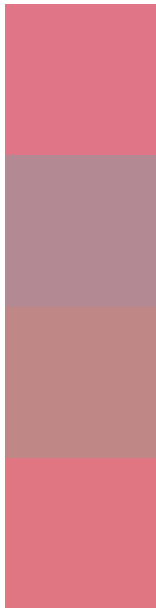


Original Color
4292965768

Protanopia
4288190106

Deuteranopia
4289499523

Trichromacy



Original Color
4292965768

Protanomaly
4289956499

Deuteranomaly
4290742149

Tritanomaly
4292900482

Monochromacy



Original Color
4292965768

Achromatopsia
4288124823

Achromatomaly
4289891218

CSS Examples

Text

The CSS property to change the color of the text to Android 4292965768 is called "color". The color property can be set on classes, ids or directly on the HTML element.

This example shows how text in the color `rgb(225, 117, 136)` looks like.

```
.text, #text, p{  
    color:rgb(225, 117, 136)  
}
```

If you want to add a text shadow in that color use the text-shadow property, you can generate a text shadow directly with our [CSS Text Shadow Generator](#).

Here you see how black text with a 4 pixel rgb(225, 117, 136) colored shadow looks like.

```
.shadow{ text-shadow: 4px 4px 2px rgb(225, 117, 136) }
```

Border

The CSS property to change the border of an element to Android 4292965768 is called "border". The border property can be set on classes, ids or directly on the HTML element.

This example shows the color as border, it can be applied via the CSS property "border" or "border-color".

```
.border, #border, table{ border:4px solid rgb(225, 117, 136) }
```

If only the border color should be changed use the property `border-color`.

```
.border{ border-color:rgb(225, 117, 136) }
```

If you want to add a box shadow in that color use:

Here you see how a box with a 4 pixel `rgb(225, 117, 136)` colored shadow looks like.

```
.boxshadow{ -moz-box-shadow:4px 4px 4px  
4px rgb(225, 117, 136); -webkit-box-  
shadow:4px 4px 4px 4px rgb(225, 117, 136);  
box-shadow:4px 4px 4px 4px rgb(225, 117,  
136) }
```

Background

The CSS property to change the background color of an element to Android 4292965768 is called "background". The background property can be set on classes, ids or directly on the HTML element.

```
.background, #background, body{  
background: rgb(225, 117, 136) }
```

If only the background color should be changed can be used:

```
.background{ background-color: rgb(225,  
117, 136) }
```

This example shows the color as background, it is applied via the CSS property "background".

To optimize and compress your CSS code, you can use our [online CSS compressor and optimizer](#) based on csstidy. If you want to create a linear or radial gradient as background or border, check our [CSS Gradient Generator](#).

Hey! You found this booklet interesting? Support Converting Colors with the new Membership Option!

The pro membership hides all ads, plus gives you double the colors in the color bucket, and more awesome pro features!

[Learn more, Memberships starting at \\$2.50/m!](#)

**Follow me
on Twitter!**

@ConvertingColor