

Converting Colors

Android(4292966041)

Have a look what the booklet for
Android(4292966041) contains.

Android(4292966041)	3
<i>Conversions</i>	4
<i>Details</i>	6
<i>Harmonies</i>	11
<i>Previews</i>	23
<i>Color Blindness Simulation</i>	26
<i>CSS Examples</i>	29

Color

Android(4292966041)

Conversions

Conversions Part 1

Format	Color
Hex	E17699
RGB	225, 118, 153
RGB Percent	88%, 46%, 60%
CMY	0.1176, 0.5373, 0.4000
CMYK	0.00, 0.48, 0.32, 0.12
HSL	340°, 64%, 67%
HSV	340°, 48%, 88%
XYZ	43.2795, 31.2643, 33.8905
YIQ	153.9830, 52.5370, 33.5690

Conversions

Conversions Part 2

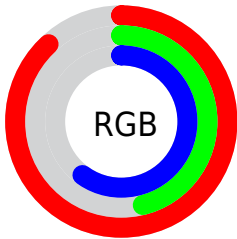
Format	Color
R_{YB}	225, 118, 153
Decimal	14775961
CIE _{Lab}	62.73, 45.31, 0.20
CIE _{LCh}	63, 45.313, 0.254
Yxy	31.2643, 0.3991, 0.2883
Android (android.graphics.Color)	4292966041 (0xFFE17699)
YUV	153.9830, -0.4846, 62.2819
Hunter-Lab	55.9145, 40.3141, 3.2037

Details

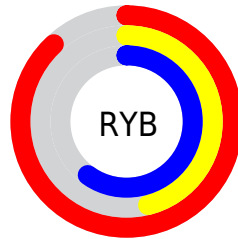
The Android color **4292966041** is a light color, and the websafe version is hex **CC6699**. A complement of this color would be **4285981118**, and the grayscale version is **4288322202**.

A 20% lighter version of the original color is **4294945999**, and **4289151334** is the 20% darker color. If you saturate the color by 10%, you get **4292960394**, and if you desaturate by 10%, it is **4292971944**.

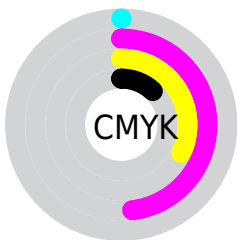
Distribution



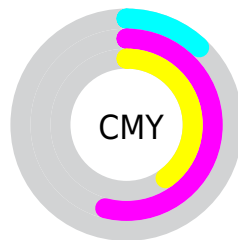
- Red (88%)
- Green (46%)
- Blue (60%)



- Red (88%)
- Yellow (46%)
- Blue (60%)



- Cyan (0%)
- Magenta (48%)
- Yellow (32%)
- Black (12%)



- Cyan (12%)
- Magenta (54%)
- Yellow (40%)

Brightness & Saturation Gradients

These gradients show how the Android color 4292966041 changes by changing the brightness by 10 percent. The first figure shows a shift by +10% for each color and the second figure -10%.

Similar to the brightness gradients but the following saturation gradients show a change of the Android color 4292966041 by changing the saturation by 10% instead.



4292966041



4292966041

4294967295



4291058815



4294945999



4289151334



4294953451



4287309390



4294960639



4285465400



4283695138



4282056716



4279959553



4278190080



4292966041



4292966041

 4292960394

 4292971944

 4292954491

 4292977591

 4292948844

 4292983494

 4292942940

 4292989142

 4292937293

 4292995045

 4292935754

 4293000692

 4293001215

Harmonies

Analogous

The Analogous color harmony consists of three colors that are next to each other on the color wheel.



4291460800



4292966041



4293032561

Triad

The Triadic color harmony groups three colors that are evenly spaced from another and form a triangle on the color wheel.



4292966041



4287013200



4278232797

Complementary

The Complementary color scheme is a pair of colors which are on the opposite of each other on the color wheel.



4292966041



4285981118

Split Complementary

Split-complementary colors differ from the complementary color scheme. The scheme consists of three colors, the original color and two neighbors of the complement color.



4278234047



4292966041



4283672942

Square

The Square scheme is like the rectangle color scheme, but the four colors are evenly spaced on the color wheel.



4292966041



4289697349



4278234263



4283538664

Rectangle

The Rectangle color scheme consists of four colors that form a rectangle on the color wheel.



4292966041



4292313691



4278234263



4278233557

Sweetspot

The Sweet Spot groups the original color and five complimentary colors.



4292966041



4294958055



4290606817



4286605937



4278190080



4286611584

Same Dimension

The Same Dimension uses a secret algorithm to generate beautiful new colors.



4292966041



4294930077



4292970614



4285556073



4289724474



4281335824

Inverse Universe

The Inverse Universe completely reimagines the original color for something new.



4292966041



4294930077



4285976545



4285556073



4289724474



4281335824

Previews

White Background



This preview shows how the Android color 4292966041 looks on a white background.

Color Contrast Check

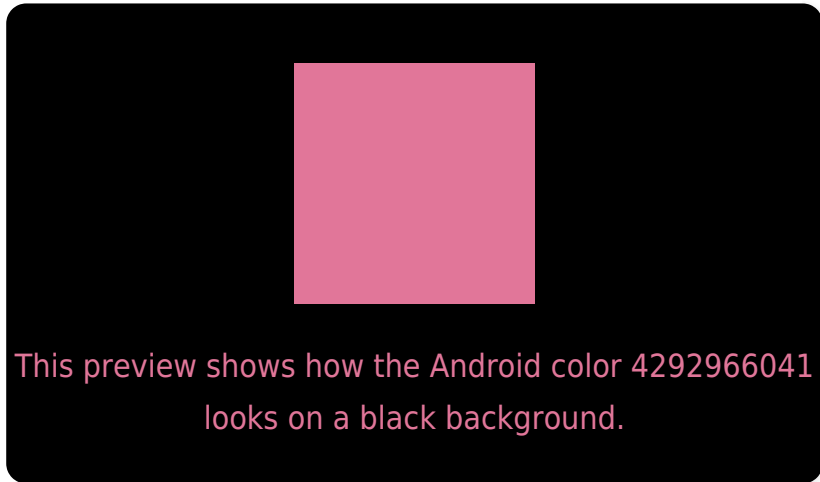
Large Text (above 18pt) WCAG AA × Fail

Any Text WCAG AA × Fail

Large Text (above 18pt) WCAG AAA × Fail

Any Text WCAG AAA × Fail

Black Background



Color Contrast Check

Large Text (above 18pt) WCAG AA ✓ Pass

Any Text WCAG AA ✓ Pass

Large Text (above 18pt) WCAG AAA ✓ Pass

Any Text WCAG AAA ✓ Pass

If you want to check with other color combinations, try the [Color Contrast Checker](#).

Android 4292966041 Background



This preview shows how black text looks on a background with the Android color 4292966041.



This preview shows how white text looks on a background with the Android color 4292966041.

Color Blindness Simulation

Color vision deficiency is a very complex topic, and I could not describe the different causes any better than Wikipedia does, so if you want to learn more, you should check out their [article about color blindness](#).


Dichromacy



Original Color
4292966041

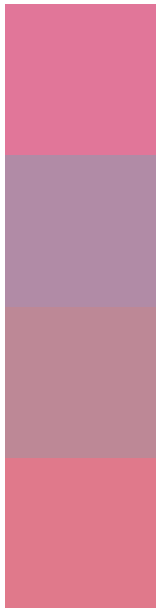
Protanopia
4287993773

Deuteranopia
4289237908



Tritanopia
4292835971

Trichromacy



Original Color
4292966041

Protanomaly
4289825702

Deuteranomaly
4290611350

Tritanomaly
4292901259

Monochromacy



Original Color
4292966041

Achromatopsia
4288322202

Achromatomaly
4290022810

CSS Examples

Text

The CSS property to change the color of the text to Android 4292966041 is called "color". The color property can be set on classes, ids or directly on the HTML element.

This example shows how text in the color `rgb(225, 118, 153)` looks like.

```
.text, #text, p{  
    color:rgb(225, 118, 153)  
}
```

If you want to add a text shadow in that color use the text-shadow property, you can generate a text shadow directly with our [CSS Text Shadow Generator](#).

Here you see how black text with a 4 pixel rgb(225, 118, 153) colored shadow looks like.

```
.shadow{ text-shadow: 4px 4px 2px rgb(225, 118, 153) }
```

Border

The CSS property to change the border of an element to Android 4292966041 is called "border". The border property can be set on classes, ids or directly on the HTML element.

This example shows the color as border, it can be applied via the CSS property "border" or "border-color".

```
.border, #border, table{ border:4px solid rgb(225, 118, 153) }
```

If only the border color should be changed use the property `border-color`.

```
.border{ border-color:rgb(225, 118, 153) }
```

If you want to add a box shadow in that color use:

Here you see how a box with a 4 pixel `rgb(225, 118, 153)` colored shadow looks like.

```
.boxshadow{ -moz-box-shadow:4px 4px 4px  
4px rgb(225, 118, 153); -webkit-box-  
shadow:4px 4px 4px 4px rgb(225, 118, 153);  
box-shadow:4px 4px 4px 4px rgb(225, 118,  
153) }
```

Background

The CSS property to change the background color of an element to Android 4292966041 is called "background". The background property can be set on classes, ids or directly on the HTML element.

```
.background, #background, body{  
background: rgb(225, 118, 153) }
```

If only the background color should be changed can be used:

```
.background{ background-color: rgb(225,  
118, 153) }
```

This example shows the color as background, it is applied via the CSS property "background".

To optimize and compress your CSS code, you can use our [online CSS compressor and optimizer](#) based on csstidy. If you want to create a linear or radial gradient as background or border, check our [CSS Gradient Generator](#).

Hey! You found this booklet interesting? Support Converting Colors with the new Membership Option!

The pro membership hides all ads, plus gives you double the colors in the color bucket, and more awesome pro features!

[Learn more, Memberships starting at \\$2.50/m!](#)

**Follow me
on Twitter!**

@ConvertingColor