

Converting Colors

Android(4292978352)

Have a look what the booklet for
Android(4292978352) contains.

Android(4292978352)	3
<i>Conversions</i>	4
<i>Details</i>	6
<i>Harmonies</i>	11
<i>Previews</i>	23
<i>Color Blindness Simulation</i>	26
<i>CSS Examples</i>	29

Color

Android(4292978352)

Conversions

Conversions Part 1

Format	Color
Hex	E1A6B0
RGB	225, 166, 176
RGB Percent	88%, 65%, 69%
CMY	0.1176, 0.3490, 0.3098
CMYK	0.00, 0.26, 0.22, 0.12
HSL	350°, 50%, 77%
HSV	350°, 26%, 88%
XYZ	52.5240, 46.4146, 47.2649
YIQ	184.7810, 31.9540, 15.6180

Conversions

Conversions Part 2

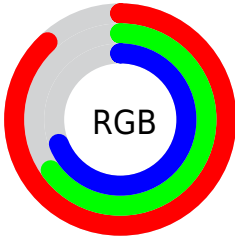
Format	Color
R _Y B	225, 166, 176
Decimal	14788272
CIE Lab	73.81, 23.18, 3.42
CIE LCh	74, 23.430, 8.387
Yxy	46.4146, 0.3593, 0.3175
Android (android.graphics.Color)	4292978352 (0xFFE1A6B0)
YUV	184.7810, -4.3290, 35.2721
Hunter-Lab	68.1282, 18.3916, 6.5565

Details

The Android color `4292978352` is a light color, and the websafe version is hex `CC9999`. A complement of this color would be `4289126871`, and the grayscale version is `4290361785`.

A 20% lighter version of the original color is `4294958568`, and `4289294972` is the 20% darker color. If you saturate the color by 10%, you get `4292972701`, and if you desaturate by 10%, it is `4292984259`.

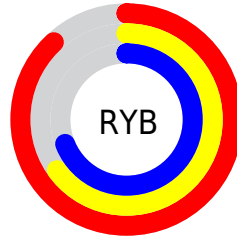
Distribution



Red (88%)

Green (65%)

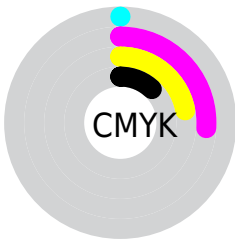
Blue (69%)



Red (88%)

Yellow (65%)

Blue (69%)

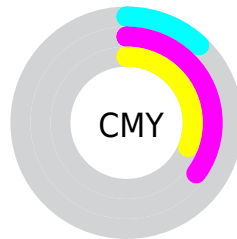


Cyan (0%)

Magenta (26%)

Yellow (22%)

Black (12%)



Cyan (12%)

Magenta (35%)

Yellow (31%)

Brightness & Saturation Gradients

These gradients show how the Android color 4292978352 changes by changing the brightness by 10 percent. The first figure shows a shift by +10% for each color and the second figure -10%.

Similar to the brightness gradients but the following saturation gradients show a change of the Android color 4292978352 by changing the saturation by 10% instead.



4292978352



4292978352

4294967295



4291136405



4294958568



4289294972



4294966015



4287519075



4285743435



4284099124



4282455071



4281008135



4278190080



4292978352



4292978352

 4292972701

 4292984259

 4292966795

 4292989909

 4292961144

 4292995816

 4292955237

 4293001211

 4292949587

 4293001215

 4292943680

 4292938029

 4292935718

Harmonies

Analogous

The Analogous color harmony consists of three colors that are next to each other on the color wheel.



4292257990



4292978352



4292913564

Triad

The Triadic color harmony groups three colors that are evenly spaced from another and form a triangle on the color wheel.



4292978352



4289182867



4287216861

Complementary

The Complementary color scheme is a pair of colors which are on the opposite of each other on the color wheel.



4292978352



4289126871

Split Complementary

Split-complementary colors differ from the complementary color scheme. The scheme consists of three colors, the original color and two neighbors of the complement color.



4286169295



4292978352



4287611045

Square

The Square scheme is like the rectangle color scheme, but the four colors are evenly spaced on the color wheel.



4292978352



4290754187



4286431931



4288984544

Rectangle

The Rectangle color scheme consists of four colors that form a rectangle on the color wheel.



4292978352



4292390034



4286431931



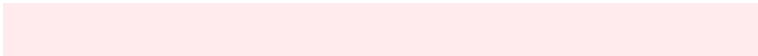
4286758617

Sweetspot

The Sweet Spot groups the original color and five complimentary colors.



4292978352



4294962158



4292257505



4286608245



4278190080



4286611584

Same Dimension

The Same Dimension uses a secret algorithm to generate beautiful new colors.



4292978352



4294947005



4292983206



4285556071



4289724446



4281335816

Inverse Universe

The Inverse Universe completely reimagines the original color for something new.



4292978352



4294947005



4289122017



4285556071



4289724446



4281335816

Previews

White Background



This preview shows how the Android color 4292978352 looks on a white background.

Color Contrast Check

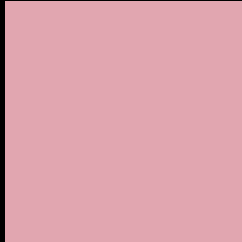
Large Text (above 18pt) WCAG AA × Fail

Any Text WCAG AA × Fail

Large Text (above 18pt) WCAG AAA × Fail

Any Text WCAG AAA × Fail

Black Background



This preview shows how the Android color 4292978352 looks on a black background.

Color Contrast Check

Large Text (above 18pt) WCAG AA ✓ Pass

Any Text WCAG AA ✓ Pass

Large Text (above 18pt) WCAG AAA ✓ Pass

Any Text WCAG AAA ✓ Pass

If you want to check with other color combinations, try the [Color Contrast Checker](#).

Android 4292978352 Background



This preview shows how black text looks on a background with the Android color 4292978352.



This preview shows how white text looks on a background with the Android color 4292978352.

Color Blindness Simulation

Color vision deficiency is a very complex topic, and I could not describe the different causes any better than Wikipedia does, so if you want to learn more, you should check out their [article about color blindness](#).

Dichromacy



Original Color
4292978352

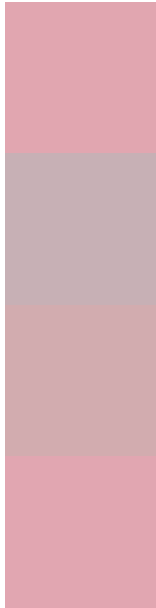
Protanopia
4290295224

Deuteranopia
4291473582



Tritanopia
4292978354

Trichromacy



Original Color
4292978352

Protanomaly
4291276981

Deuteranomaly
4291996847

Tritanomaly
4292978353

Monochromacy



Original Color
4292978352

Achromatopsia
4290361785

Achromatomaly
4291343030

CSS Examples

Text

The CSS property to change the color of the text to Android 4292978352 is called "color". The color property can be set on classes, ids or directly on the HTML element.

This example shows how text in the color `rgb(225, 166, 176)` looks like.

```
.text, #text, p{  
    color:rgb(225, 166, 176)  
}
```

If you want to add a text shadow in that color use the text-shadow property, you can generate a text shadow directly with our [CSS Text Shadow Generator](#).

Here you see how black text with a 4 pixel rgb(225, 166, 176) colored shadow looks like.

```
.shadow{ text-shadow: 4px 4px 2px rgb(225, 166, 176) }
```

Border

The CSS property to change the border of an element to Android 4292978352 is called "border". The border property can be set on classes, ids or directly on the HTML element.

This example shows the color as border, it can be applied via the CSS property "border" or "border-color".

```
.border, #border, table{ border:4px solid rgb(225, 166, 176) }
```

If only the border color should be changed use the property `border-color`.

```
.border{ border-color:rgb(225, 166, 176) }
```

If you want to add a box shadow in that color use:

Here you see how a box with a 4 pixel `rgb(225, 166, 176)` colored shadow looks like.

```
.boxshadow{ -moz-box-shadow:4px 4px 4px  
4px rgb(225, 166, 176); -webkit-box-  
shadow:4px 4px 4px 4px rgb(225, 166, 176);  
box-shadow:4px 4px 4px 4px rgb(225, 166,  
176) }
```

Background

The CSS property to change the background color of an element to Android 4292978352 is called "background". The background property can be set on classes, ids or directly on the HTML element.

```
.background, #background, body{  
background: rgb(225, 166, 176) }
```

If only the background color should be changed can be used:

```
.background{ background-color: rgb(225,  
166, 176) }
```

This example shows the color as background, it is applied via the CSS property "background".

To optimize and compress your CSS code, you can use our [online CSS compressor and optimizer](#) based on csstidy. If you want to create a linear or radial gradient as background or border, check our [CSS Gradient Generator](#).

Hey! You found this booklet interesting? Support Converting Colors with the new Membership Option!

The pro membership hides all ads, plus gives you double the colors in the color bucket, and more awesome pro features!

[Learn more, Memberships starting at \\$2.50/m!](#)

**Follow me
on Twitter!**

@ConvertingColor