

Converting Colors

Android(4292981403)

Have a look what the booklet for
Android(4292981403) contains.

Android(4292981403)	3
<i>Conversions</i>	4
<i>Details</i>	6
<i>Harmonies</i>	11
<i>Previews</i>	23
<i>Color Blindness Simulation</i>	26
<i>CSS Examples</i>	29

Color

Android(4292981403)

Conversions

Conversions Part 1

Format	Color
Hex	E1B29B
RGB	225, 178, 155
RGB Percent	88%, 70%, 61%
CMY	0.1176, 0.3020, 0.3922
CMYK	0.00, 0.21, 0.31, 0.12
HSL	20°, 54%, 75%
HSV	20°, 31%, 88%
XYZ	52.8881, 50.2149, 37.9153
YIQ	189.4310, 35.3950, 2.8110

Conversions

Conversions Part 2

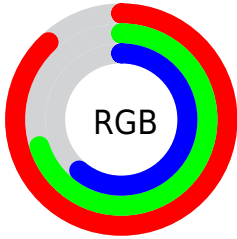
Format	Color
R _Y B	225, 189, 155
Decimal	14791323
CIE Lab	76.20, 13.84, 18.26
CIE LCh	76, 22.910, 52.849
Yxy	50.2149, 0.3750, 0.3561
Android (android.graphics.Color)	4292981403 (0xFFE1B29B)
YUV	189.4310, -16.9745, 31.1940
Hunter-Lab	70.8625, 9.2139, 17.8803

Details

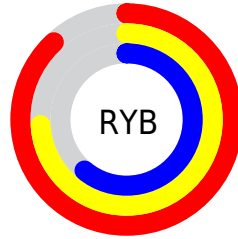
The Android color `4292981403` is a light color, and the websafe version is hex `CC9999`. A complement of this color would be `4288400097`, and the grayscale version is `4290690750`.

A 20% lighter version of the original color is `4294961874`, and `4289297768` is the 20% darker color. If you saturate the color by 10%, you get `4292977540`, and if you desaturate by 10%, it is `4292985266`.

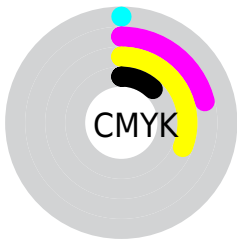
Distribution



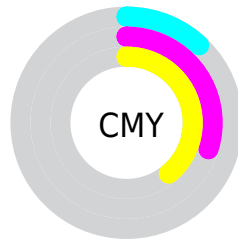
- Red (88%)
- Green (70%)
- Blue (61%)



- Red (88%)
- Yellow (74%)
- Blue (61%)



- Cyan (0%)
- Magenta (21%)
- Yellow (31%)
- Black (12%)



- Cyan (12%)
- Magenta (30%)
- Yellow (39%)

Brightness & Saturation Gradients

These gradients show how the Android color 4292981403 changes by changing the brightness by 10 percent. The first figure shows a shift by +10% for each color and the second figure -10%.

Similar to the brightness gradients but the following saturation gradients show a change of the Android color 4292981403 by changing the saturation by 10% instead.

 4292981403

 4292981403

4294967295

 4291073921

 4294961874

 4289297768

 4294967278

 4287456336

 4285746233

 4284036387

 4282392590

 4280879872

 4278190080

 4292981403

 4292981403

 4292977540

 4292985266

 4292973678

 4292989128

 4292969815

 4292992990

 4292965953

 4292996853

 4292961835

 4293000959

 4292957972

 4293001215

 4292954624

Harmonies

Analogous

The Analogous color harmony consists of three colors that are next to each other on the color wheel.



4293439148



4292981403



4291934610

Triad

The Triadic color harmony groups three colors that are evenly spaced from another and form a triangle on the color wheel.



4292981403



4287482038



4290361571

Complementary

The Complementary color scheme is a pair of colors which are on the opposite of each other on the color wheel.



4292981403



4288400097

Split Complementary

Split-complementary colors differ from the complementary color scheme. The scheme consists of three colors, the original color and two neighbors of the complement color.



4288462821



4292981403



4286695628

Square

The Square scheme is like the rectangle color scheme, but the four colors are evenly spaced on the color wheel.



4292981403



4288857506



4287088093



4291998166

Rectangle

The Rectangle color scheme consists of four colors that form a rectangle on the color wheel.



4292981403



4291018131



4287088093



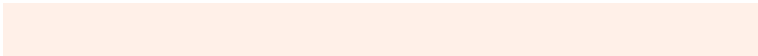
4289706981

Sweetspot

The Sweet Spot groups the original color and five complimentary colors.



4292981403



4294963432



4292975563



4286609009



4278190080



4286611584

Same Dimension

The Same Dimension uses a secret algorithm to generate beautiful new colors.



4292981403



4294951073



4292990107



4285557093



4289739264



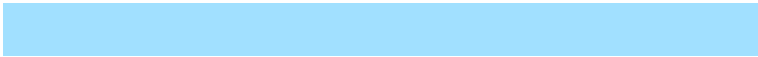
4281339904

Inverse Universe

The Inverse Universe completely reimagines the original color for something new.



4288400097



4288798975



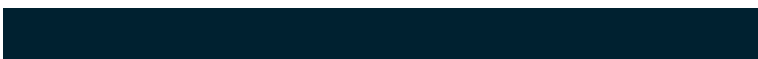
4288391393



4284837232



4278220464



4278198576

Previews

White Background



This preview shows how the Android color 4292981403 looks on a white background.

Color Contrast Check

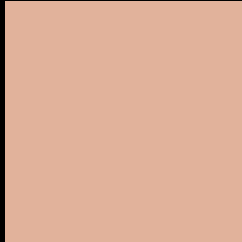
Large Text (above 18pt) WCAG AA × Fail

Any Text WCAG AA × Fail

Large Text (above 18pt) WCAG AAA × Fail

Any Text WCAG AAA × Fail

Black Background



This preview shows how the Android color 4292981403 looks on a black background.

Color Contrast Check

Large Text (above 18pt) WCAG AA ✓ Pass

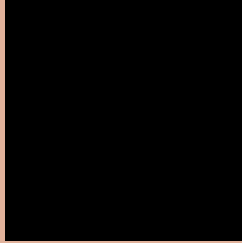
Any Text WCAG AA ✓ Pass

Large Text (above 18pt) WCAG AAA ✓ Pass

Any Text WCAG AAA ✓ Pass

If you want to check with other color combinations, try the [Color Contrast Checker](#).

Android 4292981403 Background



This preview shows how black text looks on a background with the Android color 4292981403.




This preview shows how white text looks on a background with the Android color 4292981403.

Color Blindness Simulation

Color vision deficiency is a very complex topic, and I could not describe the different causes any better than Wikipedia does, so if you want to learn more, you should check out their [article about color blindness](#).

Dichromacy





Tritanopia
4293176763

Trichromacy



Original Color
4292981403

Protanomaly
4291868830

Deuteranomaly
4292719770

Tritanomaly
4293111727

Monochromacy



Original Color
4292981403

Achromatopsia
4290624957

Achromatomaly
4291475889

CSS Examples

Text

The CSS property to change the color of the text to Android 4292981403 is called "color". The color property can be set on classes, ids or directly on the HTML element.

This example shows how text in the color `rgb(225, 178, 155)` looks like.

```
.text, #text, p{  
    color:rgb(225, 178, 155)  
}
```

If you want to add a text shadow in that color use the text-shadow property, you can generate a text shadow directly with our [CSS Text Shadow Generator](#).

Here you see how black text with a 4 pixel rgb(225, 178, 155) colored shadow looks like.

```
.shadow{ text-shadow: 4px 4px 2px rgb(225, 178, 155) }
```

Border

The CSS property to change the border of an element to Android 4292981403 is called "border". The border property can be set on classes, ids or directly on the HTML element.

This example shows the color as border, it can be applied via the CSS property "border" or "border-color".

```
.border, #border, table{ border:4px solid rgb(225, 178, 155) }
```

If only the border color should be changed use the property `border-color`.

```
.border{ border-color:rgb(225, 178, 155) }
```

If you want to add a box shadow in that color use:

Here you see how a box with a 4 pixel `rgb(225, 178, 155)` colored shadow looks like.

```
.boxshadow{ -moz-box-shadow:4px 4px 4px 4px rgb(225, 178, 155); -webkit-box-shadow:4px 4px 4px 4px rgb(225, 178, 155); box-shadow:4px 4px 4px 4px rgb(225, 178, 155) }
```

Background

The CSS property to change the background color of an element to Android 4292981403 is called "background". The background property can be set on classes, ids or directly on the HTML element.

```
.background, #background, body{  
background: rgb(225, 178, 155) }
```

If only the background color should be changed can be used:

```
.background{ background-color: rgb(225,  
178, 155) }
```

This example shows the color as background, it is applied via the CSS property "background".

To optimize and compress your CSS code, you can use our [online CSS compressor and optimizer](#) based on csstidy. If you want to create a linear or radial gradient as background or border, check our [CSS Gradient Generator](#).

Hey! You found this booklet interesting? Support Converting Colors with the new Membership Option!

The pro membership hides all ads, plus gives you double the colors in the color bucket, and more awesome pro features!

[Learn more, Memberships starting at \\$2.50/m!](#)

**Follow me
on Twitter!**

@ConvertingColor