

# Converting Colors

Android(4292982451)

Have a look what the booklet for  
Android(4292982451) contains.

<b>Android(4292982451)</b> .....	3
<b><i>Conversions</i></b> .....	4
<b><i>Details</i></b> .....	6
<b><i>Harmonies</i></b> .....	11
<b><i>Previews</i></b> .....	23
<b><i>Color Blindness Simulation</i></b> .....	26
<b><i>CSS Examples</i></b> .....	29

# **Color**

**Android(4292982451)**

# Conversions

## Conversions Part 1

Format	Color
Hex	E1B6B3
RGB	225, 182, 179
RGB Percent	88%, 71%, 70%
CMY	0.1176, 0.2863, 0.2980
CMYK	0.00, 0.19, 0.20, 0.12
HSL	4°, 43%, 79%
HSV	4°, 20%, 88%
XYZ	55.9160, 52.7181, 49.8763
YIQ	194.5150, 26.5910, 8.1830

# Conversions

## Conversions Part 2

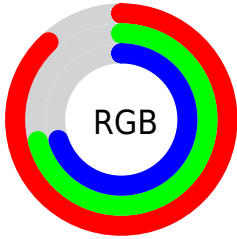
Format	Color
R <sub>Y</sub> B	225, 182, 179
Decimal	14792371
CIE Lab	77.71, 15.04, 7.39
CIE LCh	78, 16.760, 26.174
Yxy	52.7181, 0.3528, 0.3326
Android (android.graphics.Color)	4292982451 (0xFFE1B6B3)
YUV	194.5150, -7.6489, 26.7353
Hunter-Lab	72.6072, 10.4029, 10.0968

# Details

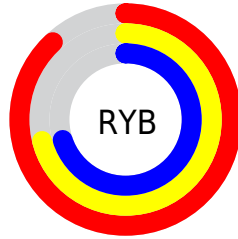
The Android color `4292982451` is a light color, and the websafe version is hex `FFCCCC`. A complement of this color would be `4289978081`, and the grayscale version is `4291019715`.

A 20% lighter version of the original color is `4294962923`, and `4289298814` is the 20% darker color. If you saturate the color by 10%, you get `4292977052`, and if you desaturate by 10%, it is `4292987849`.

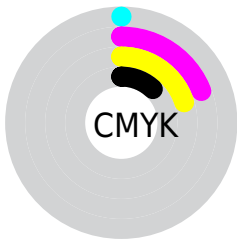
# Distribution



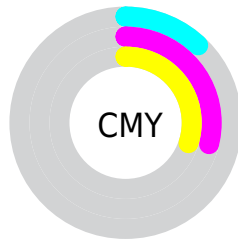
- Red (88%)
- Green (71%)
- Blue (70%)



- Red (88%)
- Yellow (71%)
- Blue (70%)



- Cyan (0%)
- Magenta (19%)
- Yellow (20%)
- Black (12%)



- Cyan (12%)
- Magenta (29%)
- Yellow (30%)

# Brightness & Saturation Gradients

These gradients show how the Android color 4292982451 changes by changing the brightness by 10 percent. The first figure shows a shift by +10% for each color and the second figure -10%.

Similar to the brightness gradients but the following saturation gradients show a change of the Android color 4292982451 by changing the saturation by 10% instead.



 4292982451

 4292982451

4294967295

 4291140504

 4294962923

 4289298814

 4287522917

 4285812813

 4284168247

 4282524193

 4281011723

 4279042048

 4278190080

 4292982451

 4292982451

 4292977052

 4292987849

 4292971654

 4292993248

 4292966255

 4292998646

 4292960857

 4293001215

 4292955458

 4292950060

 4292944661

 4292939520

# Harmonies

## Analogous

The Analogous color harmony consists of three colors that are next to each other on the color wheel.



4292785603



4292982451



4292589991

# Triad

The Triadic color harmony groups three colors that are evenly spaced from another and form a triangle on the color wheel.



4292982451



4289513390



4289577695

# Complementary

The Complementary color scheme is a pair of colors which are on the opposite of each other on the color wheel.



4292982451



4289978081

# Split Complementary

Split-complementary colors differ from the complementary color scheme. The scheme consists of three colors, the original color and two neighbors of the complement color.



4288530137



4292982451



4288596413

# Square

The Square scheme is like the rectangle color scheme, but the four colors are evenly spaced on the color wheel.



4292982451



4290692004



4288137677



4290887132

# Rectangle

The Rectangle color scheme consists of four colors that form a rectangle on the color wheel.



4292982451



4292066722



4288137677



4289119454

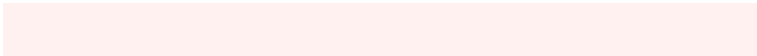


# Sweetspot

The Sweet Spot groups the original color and five complimentary colors.



4292982451



4294963696



4292981727



4286609271



4278190080



4286611584



# Same Dimension

The Same Dimension uses a secret algorithm to generate beautiful new colors.



4292982451



4294951871



4292988083



4285556325



4289727232



4281336576



# Inverse Universe

The Inverse Universe completely reimagines the original color for something new.



4289978081



4290771967



4289972449



4284837744



4278232240

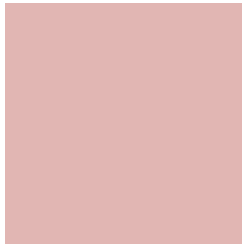


4278201648



# Previews

## White Background



This preview shows how the Android color 4292982451 looks on a white background.

## Color Contrast Check

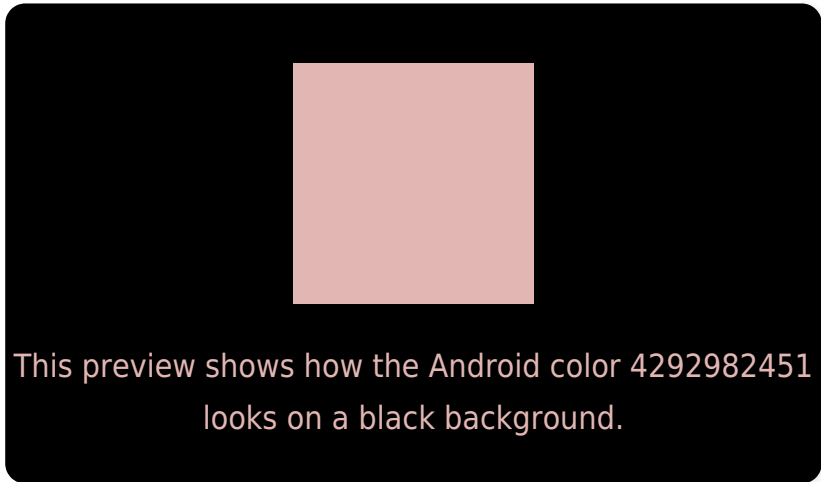
Large Text (above 18pt) WCAG AA × Fail

Any Text WCAG AA × Fail

Large Text (above 18pt) WCAG AAA × Fail

Any Text WCAG AAA × Fail

# Black Background



## Color Contrast Check

Large Text (above 18pt) WCAG AA ✓ Pass

Any Text WCAG AA ✓ Pass

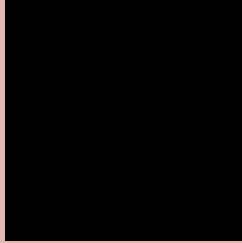
Large Text (above 18pt) WCAG AAA ✓ Pass

Any Text WCAG AAA ✓ Pass

If you want to check with other color combinations, try the [Color Contrast Checker](#).



# Android 4292982451 Background



This preview shows how black text looks on a background with the Android color 4292982451.



This preview shows how white text looks on a background with the Android color 4292982451.

# Color Blindness Simulation

Color vision deficiency is a very complex topic, and I could not describe the different causes any better than Wikipedia does, so if you want to learn more, you should check out their [article about color blindness](#).

## Dichromacy





**Tritanopia**  
4293113026

# Trichromacy



**Original Color**  
4292982451

**Protanomaly**  
4291869878

**Deuteranomaly**  
4292590002

**Tritanomaly**  
4293047741

# Monochromacy



**Original Color**  
4292982451

**Achromatopsia**  
4291019715

**Achromatomaly**  
4291739325

# CSS Examples

## Text

The CSS property to change the color of the text to Android 4292982451 is called "color". The color property can be set on classes, ids or directly on the HTML element.

This example shows how text in the color `rgb(225, 182, 179)` looks like.

```
.text, #text, p{  
    color:rgb(225, 182, 179)  
}
```

If you want to add a text shadow in that color use the text-shadow property, you can generate a text shadow directly with our [CSS Text Shadow Generator](#).

Here you see how black text with a 4 pixel rgb(225, 182, 179) colored shadow looks like.

```
.shadow{ text-shadow: 4px 4px 2px rgb(225, 182, 179) }
```

## Border

The CSS property to change the border of an element to Android 4292982451 is called "border". The border property can be set on classes, ids or directly on the HTML element.

This example shows the color as border, it can be applied via the CSS property "border" or "border-color".

```
.border, #border, table{ border:4px solid rgb(225, 182, 179) }
```

If only the border color should be changed use the property `border-color`.

```
.border{ border-color:rgb(225, 182, 179) }
```

If you want to add a box shadow in that color use:

Here you see how a box with a 4 pixel `rgb(225, 182, 179)` colored shadow looks like.

```
.boxshadow{ -moz-box-shadow:4px 4px 4px  
4px rgb(225, 182, 179); -webkit-box-  
shadow:4px 4px 4px 4px rgb(225, 182, 179);  
box-shadow:4px 4px 4px 4px rgb(225, 182,  
179) }
```

# Background

The CSS property to change the background color of an element to Android 4292982451 is called "background". The background property can be set on classes, ids or directly on the HTML element.

```
.background, #background, body{  
background: rgb(225, 182, 179) }
```

If only the background color should be changed can be used:

```
.background{ background-color: rgb(225,  
182, 179) }
```

This example shows the color as background, it is applied via the CSS property "background".

To optimize and compress your CSS code, you can use our [online CSS compressor and optimizer](#) based on csstidy. If you want to create a linear or radial gradient as background or border, check our [CSS Gradient Generator](#).



Hey! You found this booklet interesting? Support Converting Colors with the new Membership Option!

The pro membership hides all ads, plus gives you double the colors in the color bucket, and more awesome pro features!

**[Learn more, Memberships starting at \\$2.50/m!](#)**

**Follow me  
on Twitter!**

@ConvertingColor