

# Converting Colors

Android(4292984477)

Have a look what the booklet for  
Android(4292984477) contains.

<b>Android(4292984477)</b> .....	3
<b><i>Conversions</i></b> .....	4
<b><i>Details</i></b> .....	6
<b><i>Harmonies</i></b> .....	11
<b><i>Previews</i></b> .....	23
<b><i>Color Blindness Simulation</i></b> .....	26
<b><i>CSS Examples</i></b> .....	29

# **Color**

**Android(4292984477)**

# Conversions

## Conversions Part 1

Format	Color
Hex	E1BE9D
RGB	225, 190, 157
RGB Percent	88%, 75%, 62%
CMY	0.1176, 0.2549, 0.3843
CMYK	0.00, 0.16, 0.30, 0.12
HSL	29°, 53%, 75%
HSV	29°, 30%, 88%
XYZ	55.5506, 55.2688, 39.6384
YIQ	196.7030, 31.4530, -2.8430

# Conversions

## Conversions Part 2

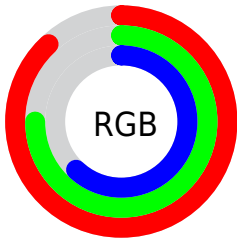
Format	Color
R <sub>Y</sub> B	225, 221, 157
Decimal	14794397
CIE Lab	79.20, 7.72, 21.32
CIE LCh	79, 22.677, 70.109
Yxy	55.2688, 0.3692, 0.3673
Android (android.graphics.Color)	4292984477 (0xFFE1BE9D)
YUV	196.7030, -19.5736, 24.8165
Hunter-Lab	74.3430, 3.2786, 20.4277

# Details

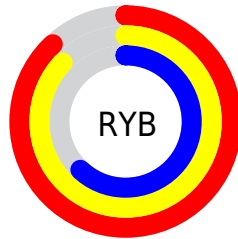
The Android color `4292984477` is a light color, and the websafe version is hex `FFCC99`. A complement of this color would be `4288528609`, and the grayscale version is `4291151301`.

A 20% lighter version of the original color is `4294964948`, and `4289300842` is the 20% darker color. If you saturate the color by 10%, you get `4292981383`, and if you desaturate by 10%, it is `4292987572`.

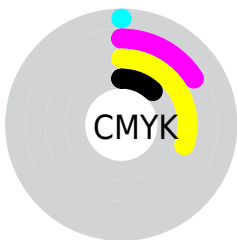
# Distribution



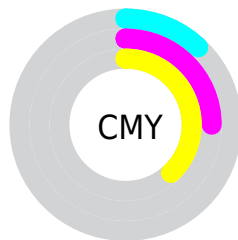
- Red (88%)
- Green (75%)
- Blue (62%)



- Red (88%)
- Yellow (87%)
- Blue (62%)



- Cyan (0%)
- Magenta (16%)
- Yellow (30%)
- Black (12%)



- Cyan (12%)
- Magenta (25%)
- Yellow (38%)

# Brightness & Saturation Gradients

These gradients show how the Android color 4292984477 changes by changing the brightness by 10 percent. The first figure shows a shift by +10% for each color and the second figure -10%.

Similar to the brightness gradients but the following saturation gradients show a change of the Android color 4292984477 by changing the saturation by 10% instead.





4292984477



4292984477

4294967295



4291142531



4294964948



4289300842



4294967280



4287524689



4285749050



4284104740



4282460687



4280947968



4278910976



4278190080

 4292984477

 4292984477

 4292981383

 4292987572

 4292978544

 4292990410

 4292975450

 4292993505

 4292972611

 4292996343

 4292969517

 4292999423

 4292966678

 4293001215

 4292963584

# Harmonies

## Analogous

The Analogous color harmony consists of three colors that are next to each other on the color wheel.



4293834922



4292984477



4291675547

# Triad

The Triadic color harmony groups three colors that are evenly spaced from another and form a triangle on the color wheel.



4292984477



4287484107



4291935460

# Complementary

The Complementary color scheme is a pair of colors which are on the opposite of each other on the color wheel.



4292984477



4288528609

# Split Complementary

Split-complementary colors differ from the complementary color scheme. The scheme consists of three colors, the original color and two neighbors of the complement color.



4290102509



4292984477



4287352799

# Square

The Square scheme is like the rectangle color scheme, but the four colors are evenly spaced on the color wheel.



4292984477



4288597941



4288400107



4293310419

# Rectangle

The Rectangle color scheme consists of four colors that form a rectangle on the color wheel.



4292984477



4290627999



4288400107



4291346409



# Sweetspot

The Sweet Spot groups the original color and five complimentary colors.



4292984477



4294964200



4292976064



4286609521



4278190080



4286611584



# Same Dimension

The Same Dimension uses a secret algorithm to generate beautiful new colors.



4292984477



4294955171



4292993181



4285557349



4289746176



4281341952

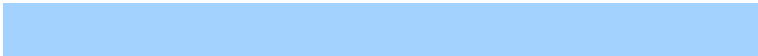


# Inverse Universe

The Inverse Universe completely reimagines the original color for something new.



4288528609



4288926463



4288519905



4284836720



4278213552



4278196528



# Previews

## White Background



This preview shows how the Android color 4292984477 looks on a white background.

## Color Contrast Check

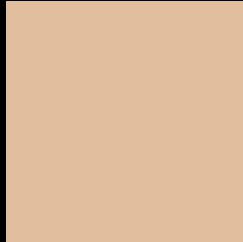
Large Text (above 18pt) WCAG AA × Fail

Any Text WCAG AA × Fail

Large Text (above 18pt) WCAG AAA × Fail

Any Text WCAG AAA × Fail

# Black Background



This preview shows how the Android color 4292984477 looks on a black background.

## Color Contrast Check

Large Text (above 18pt) WCAG AA ✓ Pass

Any Text WCAG AA ✓ Pass

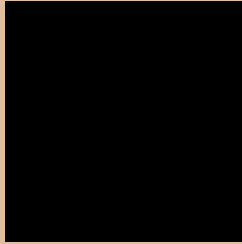
Large Text (above 18pt) WCAG AAA ✓ Pass

Any Text WCAG AAA ✓ Pass

If you want to check with other color combinations, try the [Color Contrast Checker](#).



# Android 4292984477 Background



This preview shows how black text looks on a background with the Android color 4292984477.



This preview shows how white text looks on a background with the Android color 4292984477.

# Color Blindness Simulation

Color vision deficiency is a very complex topic, and I could not describe the different causes any better than Wikipedia does, so if you want to learn more, you should check out their [article about color blindness](#).

## Dichromacy



**Original Color**  
4292984477

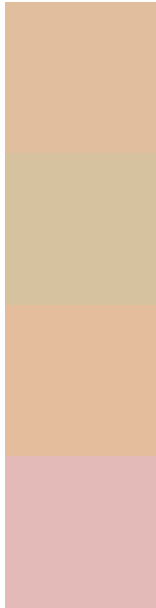
**Protanopia**  
4291871904

**Deuteranopia**  
4293246365



**Tritanopia**  
4293310663

# Trichromacy



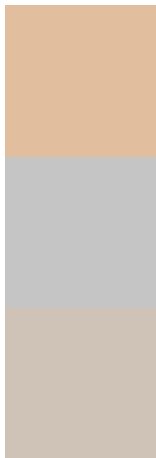
**Original Color**  
4292984477

**Protanomaly**  
4292264607

**Deuteranomaly**  
4293180829

**Tritanomaly**  
4293180088

# Monochromacy



**Original Color**  
4292984477

**Achromatopsia**  
4291151301

**Achromatomaly**  
4291805878

# CSS Examples

## Text

The CSS property to change the color of the text to Android 4292984477 is called "color". The color property can be set on classes, ids or directly on the HTML element.

This example shows how text in the color `rgb(225, 190, 157)` looks like.

```
.text, #text, p{  
    color:rgb(225, 190, 157)  
}
```

If you want to add a text shadow in that color use the text-shadow property, you can generate a text shadow directly with our [CSS Text Shadow Generator](#).

Here you see how black text with a 4 pixel rgb(225, 190, 157) colored shadow looks like.

```
.shadow{ text-shadow: 4px 4px 2px rgb(225, 190, 157) }
```

## Border

The CSS property to change the border of an element to Android 4292984477 is called "border". The border property can be set on classes, ids or directly on the HTML element.

This example shows the color as border, it can be applied via the CSS property "border" or "border-color".

```
.border, #border, table{ border:4px solid rgb(225, 190, 157) }
```

If only the border color should be changed use the property `border-color`.

```
.border{ border-color:rgb(225, 190, 157) }
```

If you want to add a box shadow in that color use:

Here you see how a box with a 4 pixel `rgb(225, 190, 157)` colored shadow looks like.

```
.boxshadow{ -moz-box-shadow:4px 4px 4px 4px rgb(225, 190, 157); -webkit-box-shadow:4px 4px 4px 4px rgb(225, 190, 157); box-shadow:4px 4px 4px 4px rgb(225, 190, 157) }
```

# Background

The CSS property to change the background color of an element to Android 4292984477 is called "background". The background property can be set on classes, ids or directly on the HTML element.

```
.background, #background, body{  
background: rgb(225, 190, 157) }
```

If only the background color should be changed can be used:

```
.background{ background-color: rgb(225,  
190, 157) }
```

This example shows the color as background, it is applied via the CSS property "background".

To optimize and compress your CSS code, you can use our [online CSS compressor and optimizer](#) based on csstidy. If you want to create a linear or radial gradient as background or border, check our [CSS Gradient Generator](#).



Hey! You found this booklet interesting? Support Converting Colors with the new Membership Option!

The pro membership hides all ads, plus gives you double the colors in the color bucket, and more awesome pro features!

**[Learn more, Memberships starting at \\$2.50/m!](#)**

**Follow me  
on Twitter!**

@ConvertingColor