

Converting Colors

Android(4292986043)

Have a look what the booklet for
Android(4292986043) contains.

Android(4292986043)	3
<i>Conversions</i>	4
<i>Details</i>	6
<i>Harmonies</i>	11
<i>Previews</i>	23
<i>Color Blindness Simulation</i>	26
<i>CSS Examples</i>	29

Color

Android(4292986043)

Conversions

Conversions Part 1

Format	Color
Hex	E1C4BB
RGB	225, 196, 187
RGB Percent	88%, 77%, 73%
CMY	0.1176, 0.2314, 0.2667
CMYK	0.00, 0.13, 0.17, 0.12
HSL	14°, 39%, 81%
HSV	14°, 17%, 88%
XYZ	59.7609, 59.0753, 55.2666
YIQ	203.6450, 20.1730, 3.3490

Conversions

Conversions Part 2

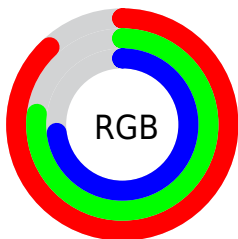
Format	Color
R _Y B	225, 199, 187
Decimal	14795963
CIE Lab	81.33, 8.81, 8.28
CIE LCh	81, 12.088, 43.218
Yxy	59.0753, 0.3433, 0.3393
Android (android.graphics.Color)	4292986043 (0xFFE1C4BB)
YUV	203.6450, -8.2060, 18.7283
Hunter-Lab	76.8604, 4.2824, 11.1697

Details

The Android color `4292986043` is a light color, and the websafe version is hex `FFCCCC`. A complement of this color would be `4290500833`, and the grayscale version is `4291611852`.

A 20% lighter version of the original color is `4294966771`, and `4289302150` is the 20% darker color. If you saturate the color by 10%, you get `4292981668`, and if you desaturate by 10%, it is `4292990418`.

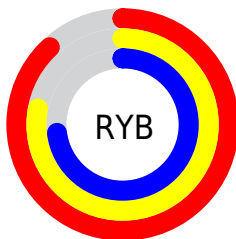
Distribution



Red (88%)

Green (77%)

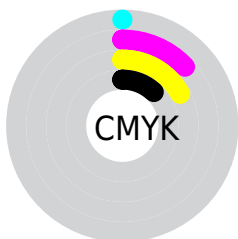
Blue (73%)



Red (88%)

Yellow (78%)

Blue (73%)

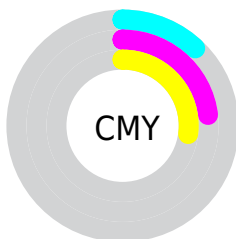


Cyan (0%)

Magenta (13%)

Yellow (17%)

Black (12%)



Cyan (12%)

Magenta (23%)

Yellow (27%)

Brightness & Saturation Gradients

These gradients show how the Android color 4292986043 changes by changing the brightness by 10 percent. The first figure shows a shift by +10% for each color and the second figure -10%.

Similar to the brightness gradients but the following saturation gradients show a change of the Android color 4292986043 by changing the saturation by 10% instead.

 4292986043

 4292986043

4294967295

 4291144096

 4294966771


 4289302150

 4287591789

 4285881428

 4284236861

 4282658343

 4281145619

 4279762944

 4278190080

 4292986043

 4292986043

 4292981668

 4292990418

 4292977294

 4292994792

 4292972663

 4292999423

 4292968289

 4293001215

 4292963915

 4292959540

 4292955166

 4292950791

 4292949248

Harmonies

Analogous

The Analogous color harmony consists of three colors that are next to each other on the color wheel.



4293051077



4292986043



4292528053

Triad

The Triadic color harmony groups three colors that are evenly spaced from another and form a triangle on the color wheel.



4292986043



4290105539



4291086816

Complementary

The Complementary color scheme is a pair of colors which are on the opposite of each other on the color wheel.



4292986043



4290500833

Split Complementary

Split-complementary colors differ from the complementary color scheme. The scheme consists of three colors, the original color and two neighbors of the complement color.



4290235871



4292986043



4289647055

Square

The Square scheme is like the rectangle color scheme, but the four colors are evenly spaced on the color wheel.



4292986043



4290891449



4289712345



4292003547

Rectangle

The Rectangle color scheme consists of four colors that form a rectangle on the color wheel.



4292986043



4292004532



4289712345



4290825184

Sweetspot

The Sweet Spot groups the original color and five complimentary colors.



4292986043



4294964722



4292983768



4286610040



4278190080



4286611584

Same Dimension

The Same Dimension uses a secret algorithm to generate beautiful new colors.



4292986043



4294957260



4292990907



4285556837



4289735168



4281338624

Inverse Universe

The Inverse Universe completely reimagines the original color for something new.



4290500833



4291621887



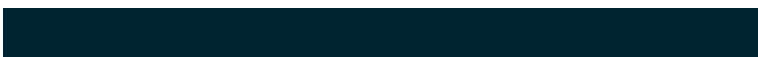
4290495969



4284837488



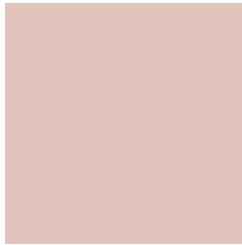
4278224560



4278199600

Previews

White Background



This preview shows how the Android color 4292986043 looks on a white background.

Color Contrast Check

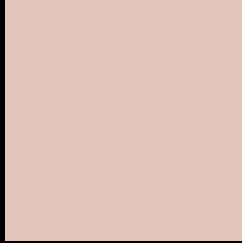
Large Text (above 18pt) WCAG AA × Fail

Any Text WCAG AA × Fail

Large Text (above 18pt) WCAG AAA × Fail

Any Text WCAG AAA × Fail

Black Background



This preview shows how the Android color 4292986043 looks on a black background.

Color Contrast Check

Large Text (above 18pt) WCAG AA ✓ Pass

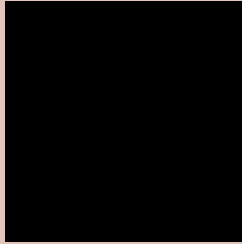
Any Text WCAG AA ✓ Pass

Large Text (above 18pt) WCAG AAA ✓ Pass

Any Text WCAG AAA ✓ Pass

If you want to check with other color combinations, try the [Color Contrast Checker](#).

Android 4292986043 Background



This preview shows how black text looks on a background with the Android color 4292986043.



This preview shows how white text looks on a background with the Android color 4292986043.

Color Blindness Simulation

Color vision deficiency is a very complex topic, and I could not describe the different causes any better than Wikipedia does, so if you want to learn more, you should check out their [article about color blindness](#).


Dichromacy



Original Color
4292986043

Protanopia
4291938750

Deuteranopia
4293116859



Tritanopia
4293181904

Trichromacy



Original Color
4292986043

Protanomaly
4292331453

Deuteranomaly
4293051323

Tritanomaly
4293116616

Monochromacy



Original Color
4292986043

Achromatopsia
4291611852

Achromatomaly
4292135366

CSS Examples

Text

The CSS property to change the color of the text to Android 4292986043 is called "color". The color property can be set on classes, ids or directly on the HTML element.

This example shows how text in the color `rgb(225, 196, 187)` looks like.

```
.text, #text, p{  
    color:rgb(225, 196, 187)  
}
```

If you want to add a text shadow in that color use the text-shadow property, you can generate a text shadow directly with our [CSS Text Shadow Generator](#).

Here you see how black text with a 4 pixel rgb(225, 196, 187) colored shadow looks like.

```
.shadow{ text-shadow: 4px 4px 2px rgb(225, 196, 187) }
```

Border

The CSS property to change the border of an element to Android 4292986043 is called "border". The border property can be set on classes, ids or directly on the HTML element.

This example shows the color as border, it can be applied via the CSS property "border" or "border-color".

```
.border, #border, table{ border:4px solid rgb(225, 196, 187) }
```

If only the border color should be changed use the property `border-color`.

```
.border{ border-color:rgb(225, 196, 187) }
```

If you want to add a box shadow in that color use:

Here you see how a box with a 4 pixel `rgb(225, 196, 187)` colored shadow looks like.

```
.boxshadow{ -moz-box-shadow:4px 4px 4px 4px rgb(225, 196, 187); -webkit-box-shadow:4px 4px 4px 4px rgb(225, 196, 187); box-shadow:4px 4px 4px 4px rgb(225, 196, 187) }
```

Background

The CSS property to change the background color of an element to Android 4292986043 is called "background". The background property can be set on classes, ids or directly on the HTML element.

```
.background, #background, body{  
background: rgb(225, 196, 187) }
```

If only the background color should be changed can be used:

```
.background{ background-color: rgb(225,  
196, 187) }
```

This example shows the color as background, it is applied via the CSS property "background".

To optimize and compress your CSS code, you can use our [online CSS compressor and optimizer](#) based on csstidy. If you want to create a linear or radial gradient as background or border, check our [CSS Gradient Generator](#).

Hey! You found this booklet interesting? Support Converting Colors with the new Membership Option!

The pro membership hides all ads, plus gives you double the colors in the color bucket, and more awesome pro features!

[Learn more, Memberships starting at \\$2.50/m!](#)

**Follow me
on Twitter!**

@ConvertingColor