

Converting Colors

Android(4292986551)

Have a look what the booklet for
Android(4292986551) contains.

Android(4292986551)	3
<i>Conversions</i>	4
<i>Details</i>	6
<i>Harmonies</i>	11
<i>Previews</i>	23
<i>Color Blindness Simulation</i>	26
<i>CSS Examples</i>	29

Color

Android(4292986551)

Conversions

Conversions Part 1

Format	Color
Hex	E1C6B7
RGB	225, 198, 183
RGB Percent	88%, 78%, 72%
CMY	0.1176, 0.2235, 0.2824
CMYK	0.00, 0.12, 0.19, 0.12
HSL	21°, 41%, 80%
HSV	21°, 19%, 88%
XYZ	59.7927, 59.8146, 53.1937
YIQ	204.3630, 20.9070, 1.0590

Conversions

Conversions Part 2

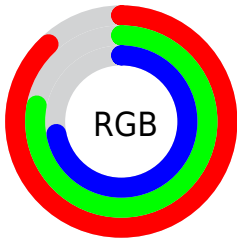
Format	Color
R_{YB}	225, 206, 183
Decimal	14796471
CIE _{Lab}	81.74, 7.14, 10.99
CIE _{LCh}	82, 13.111, 56.993
Yxy	59.8146, 0.3460, 0.3461
Android (android.graphics.Color)	4292986551 (0xFFE1C6B7)
YUV	204.3630, -10.5320, 18.0986
Hunter-Lab	77.3399, 2.6562, 13.3588

Details

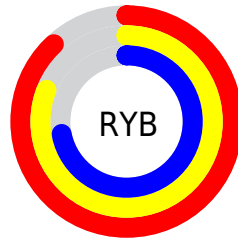
The Android color `4292986551` is a light color, and the websafe version is hex `FFCCCC`. A complement of this color would be `4290237153`, and the grayscale version is `4291611852`.

A 20% lighter version of the original color is `4294967279`, and `4289302658` is the 20% darker color. If you saturate the color by 10%, you get `4292982945`, and if you desaturate by 10%, it is `4292990158`.

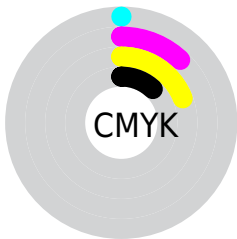
Distribution



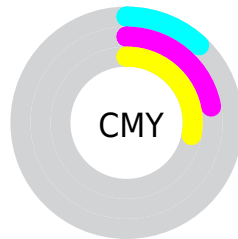
- Red (88%)
- Green (78%)
- Blue (72%)



- Red (88%)
- Yellow (81%)
- Blue (72%)



- Cyan (0%)
- Magenta (12%)
- Yellow (19%)
- Black (12%)



- Cyan (12%)
- Magenta (22%)
- Yellow (28%)

Brightness & Saturation Gradients

These gradients show how the Android color 4292986551 changes by changing the brightness by 10 percent. The first figure shows a shift by +10% for each color and the second figure -10%.

Similar to the brightness gradients but the following saturation gradients show a change of the Android color 4292986551 by changing the saturation by 10% instead.

 4292986551

 4292986551

4294967295

 4291144604

 4294967279


 4289302658

 4287592297

 4285881937

 4284237370

 4282658852

 4281146127

 4279697408

 4278190080

 4292986551

 4292986551

 4292982945

 4292990158

 4292979082

 4292994020

 4292975476

 4292997627

 4292971613

 4293001215

 4292968007

 4292964144

 4292960538

 4292956675

 4292956160

Harmonies

Analogous

The Analogous color harmony consists of three colors that are next to each other on the color wheel.



4293313473



4292986551



4292332211

Triad

The Triadic color harmony groups three colors that are evenly spaced from another and form a triangle on the color wheel.



4292986551



4289778377



4291610849

Complementary

The Complementary color scheme is a pair of colors which are on the opposite of each other on the color wheel.



4292986551



4290237153

Split Complementary

Split-complementary colors differ from the complementary color scheme. The scheme consists of three colors, the original color and two neighbors of the complement color.



4290629091



4292986551



4289516246

Square

The Square scheme is like the rectangle color scheme, but the four colors are evenly spaced on the color wheel.



4292986551



4290499005



4289843423



4292527577

Rectangle

The Rectangle color scheme consists of four colors that form a rectangle on the color wheel.



4292986551



4291743156



4289843423



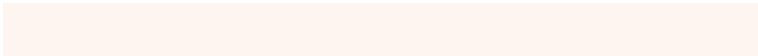
4291283682

Sweetspot

The Sweet Spot groups the original color and five complimentary colors.



4292986551



4294964720



4292982738



4286610039



4278190080



4286611584

Same Dimension

The Same Dimension uses a secret algorithm to generate beautiful new colors.



4292986551



4294958023



4292991927



4285557093



4289740544



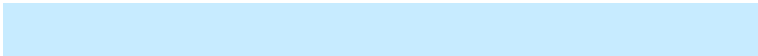
4281340160

Inverse Universe

The Inverse Universe completely reimagines the original color for something new.



4290237153



4291292159



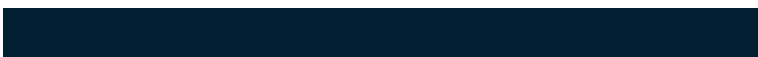
4290231777



4284836976



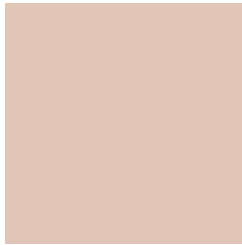
4278219184



4278198064

Previews

White Background



This preview shows how the Android color 4292986551 looks on a white background.

Color Contrast Check

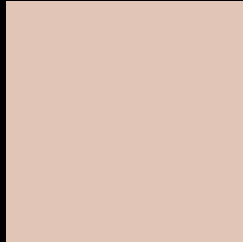
Large Text (above 18pt) WCAG AA × Fail

Any Text WCAG AA × Fail

Large Text (above 18pt) WCAG AAA × Fail

Any Text WCAG AAA × Fail

Black Background



This preview shows how the Android color 4292986551 looks on a black background.

Color Contrast Check

Large Text (above 18pt) WCAG AA ✓ Pass

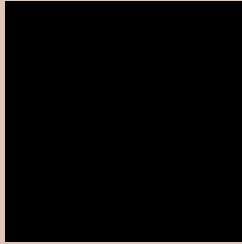
Any Text WCAG AA ✓ Pass

Large Text (above 18pt) WCAG AAA ✓ Pass

Any Text WCAG AAA ✓ Pass

If you want to check with other color combinations, try the [Color Contrast Checker](#).

Android 4292986551 Background



This preview shows how black text looks on a background with the Android color 4292986551.




This preview shows how white text looks on a background with the Android color 4292986551.

Color Blindness Simulation

Color vision deficiency is a very complex topic, and I could not describe the different causes any better than Wikipedia does, so if you want to learn more, you should check out their [article about color blindness](#).

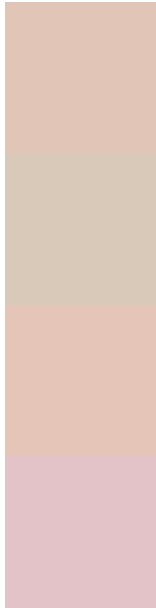
Dichromacy

	Original Color 4292986551
	Protanopia 4292070329
	Deuteranopia 4293313719



Tritanopia
4293182161

Trichromacy



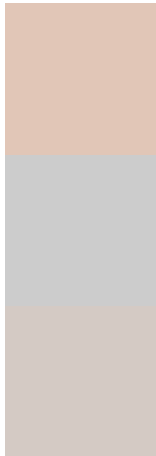
Original Color
4292986551

Protanomaly
4292397496

Deuteranomaly
4293182903

Tritanomaly
4293116872

Monochromacy



Original Color
4292986551

Achromatopsia
4291611852

Achromatomaly
4292135620

CSS Examples

Text

The CSS property to change the color of the text to Android 4292986551 is called "color". The color property can be set on classes, ids or directly on the HTML element.

This example shows how text in the color `rgb(225, 198, 183)` looks like.

```
.text, #text, p{  
    color:rgb(225, 198, 183)  
}
```

If you want to add a text shadow in that color use the text-shadow property, you can generate a text shadow directly with our [CSS Text Shadow Generator](#).

Here you see how black text with a 4 pixel rgb(225, 198, 183) colored shadow looks like.

```
.shadow{ text-shadow: 4px 4px 2px rgb(225, 198, 183) }
```

Border

The CSS property to change the border of an element to Android 4292986551 is called "border". The border property can be set on classes, ids or directly on the HTML element.

This example shows the color as border, it can be applied via the CSS property "border" or "border-color".

```
.border, #border, table{ border:4px solid rgb(225, 198, 183) }
```

If only the border color should be changed use the property border-color.

```
.border{ border-color:rgb(225, 198, 183) }
```

If you want to add a box shadow in that color use:

Here you see how a box with a 4 pixel rgb(225, 198, 183) colored shadow looks like.

```
.boxshadow{ -moz-box-shadow:4px 4px 4px  
4px rgb(225, 198, 183); -webkit-box-  
shadow:4px 4px 4px 4px rgb(225, 198, 183);  
box-shadow:4px 4px 4px 4px rgb(225, 198,  
183) }
```

Background

The CSS property to change the background color of an element to Android 4292986551 is called "background". The background property can be set on classes, ids or directly on the HTML element.

```
.background, #background, body{  
background: rgb(225, 198, 183) }
```

If only the background color should be changed can be used:

```
.background{ background-color: rgb(225,  
198, 183) }
```

This example shows the color as background, it is applied via the CSS property "background".

To optimize and compress your CSS code, you can use our [online CSS compressor and optimizer](#) based on csstidy. If you want to create a linear or radial gradient as background or border, check our [CSS Gradient Generator](#).

Hey! You found this booklet interesting? Support Converting Colors with the new Membership Option!

The pro membership hides all ads, plus gives you double the colors in the color bucket, and more awesome pro features!

[Learn more, Memberships starting at \\$2.50/m!](#)

**Follow me
on Twitter!**

@ConvertingColor