

Converting Colors

Android(4293014885)

Have a look what the booklet for
Android(4293014885) contains.

Android(4293014885)	3
<i>Conversions</i>	4
<i>Details</i>	6
<i>Harmonies</i>	11
<i>Previews</i>	23
<i>Color Blindness Simulation</i>	26
<i>CSS Examples</i>	29

Color

Android(4293014885)

Conversions

Conversions Part 1

Format	Color
Hex	E23565
RGB	226, 53, 101
RGB Percent	89%, 21%, 40%
CMY	0.1137, 0.7922, 0.6039
CMYK	0.00, 0.77, 0.55, 0.11
HSL	343°, 75%, 55%
HSV	343°, 77%, 89%
XYZ	34.9861, 19.6545, 14.2617
YIQ	110.1990, 87.7000, 51.6040

Conversions

Conversions Part 2

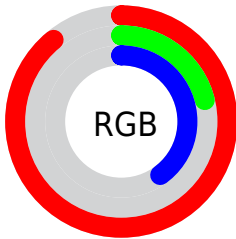
Format	Color
R_{YB}	226, 53, 101
Decimal	14824805
CIE _{Lab}	51.44, 67.63, 14.71
CIE _{LCh}	51, 69.208, 12.274
Yxy	19.6545, 0.5078, 0.2853
Android (android.graphics.Color)	4293014885 (0xFFE23565)
YUV	110.1990, -4.5351, 101.5575
Hunter-Lab	44.3334, 63.2812, 11.9604

Details

The Android color **4293014885** is a dark color, and the websafe version is hex **CC3366**. The color can be described as dark washed rose. A complement of this color would be **4281721522**, and the grayscale version is **4285427310**.

A 20% lighter version of the original color is **4294931352**, and **4288938039** is the 20% darker color. If you saturate the color by 10%, you get **4293008981**, and if you desaturate by 10%, it is **4293020789**.

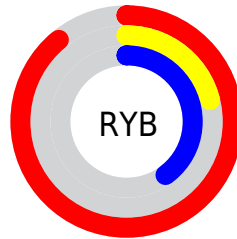
Distribution



Red (89%)

Green (21%)

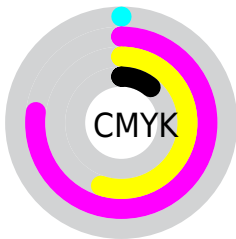
Blue (40%)



Red (89%)

Yellow (21%)

Blue (40%)

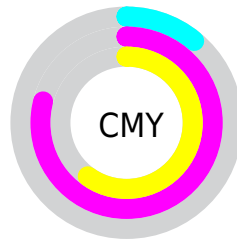


Cyan (0%)

Magenta (77%)

Yellow (55%)

Black (11%)



Cyan (11%)

Magenta (79%)

Yellow (60%)

Brightness & Saturation Gradients

These gradients show how the Android color 4293014885 changes by changing the brightness by 10 percent. The first figure shows a shift by +10% for each color and the second figure -10%.

Similar to the brightness gradients but the following saturation gradients show a change of the Android color 4293014885 by changing the saturation by 10% instead.

 4293014885

 4293014885

4294967295

 4290969933

 4294931352

 4288938039

 4294938802

 4286906402

 4294946254

 4284940300

 4294953706

 4283039747

 4294961407

 4281008129

 4278190080

 4293014885

 4293014885

 4293008981

 4293020789

 4293003332

 4293026438

 4293001279

 4293032342

 4293037990

 4293043895

 4293049799

 4293055447

 4293061352

 4293066744

Harmonies

Analogous

The Analogous color harmony consists of three colors that are next to each other on the color wheel.



4291903392



4293014885



4292103724

Triad

The Triadic color harmony groups three colors that are evenly spaced from another and form a triangle on the color wheel.



4293014885



4281830417



4278225900

Complementary

The Complementary color scheme is a pair of colors which are on the opposite of each other on the color wheel.



4293014885



4281721522

Split Complementary

Split-complementary colors differ from the complementary color scheme. The scheme consists of three colors, the original color and two neighbors of the complement color.



4278227913



4293014885



4278227796

Square

The Square scheme is like the rectangle color scheme, but the four colors are evenly spaced on the color wheel.



4293014885



4286480384



4278228370



4278221551

Rectangle

The Rectangle color scheme consists of four colors that form a rectangle on the color wheel.



4293014885



4290667008



4278228370



4278226916

Sweetspot

The Sweet Spot groups the original color and five complimentary colors.



4293014885



4294952149



4289803746



4286602342



4278190080



4286611584

Same Dimension

The Same Dimension uses a secret algorithm to generate beautiful new colors.



4293014885



4294906965



4293024309



4285556072



4289724465



4281335821

Inverse Universe

The Inverse Universe completely reimagines the original color for something new.



4293014885



4294906965



4281712098



4285556072



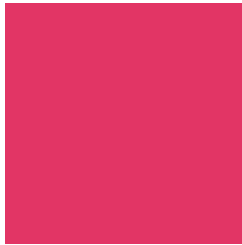
4289724465



4281335821

Previews

White Background



This preview shows how the Android color 4293014885 looks on a white background.

Color Contrast Check

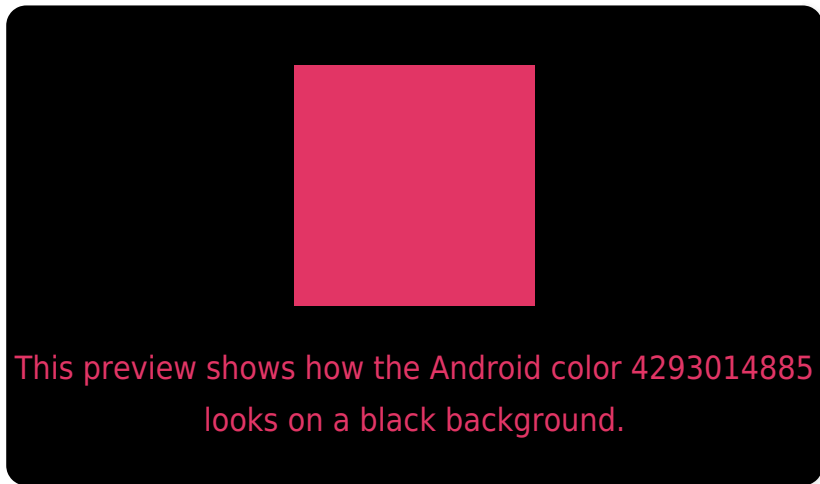
Large Text (above 18pt) WCAG AA ✓ Pass

Any Text WCAG AA ✗ Fail

Large Text (above 18pt) WCAG AAA ✗ Fail

Any Text WCAG AAA ✗ Fail

Black Background



Color Contrast Check

Large Text (above 18pt) WCAG AA ✓ Pass

Any Text WCAG AA ✓ Pass

Large Text (above 18pt) WCAG AAA ✓ Pass

Any Text WCAG AAA × Fail

If you want to check with other color combinations, try the [Color Contrast Checker](#).

Android 4293014885 Background



This preview shows how black text looks on a background with the Android color 4293014885.

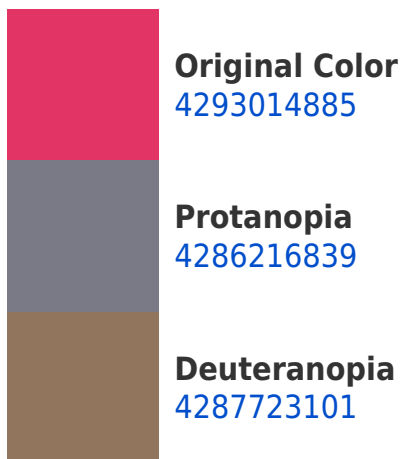


This preview shows how white text looks on a background with the Android color 4293014885.

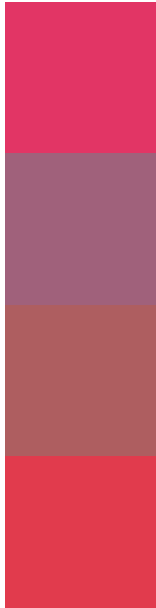
Color Blindness Simulation

Color vision deficiency is a very complex topic, and I could not describe the different causes any better than Wikipedia does, so if you want to learn more, you should check out their [article about color blindness](#).

Dichromacy



Trichromacy



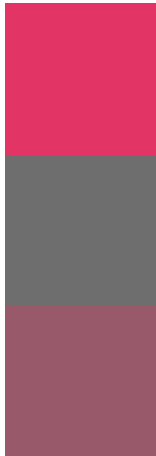
Original Color
4293014885

Protanomaly
4288700795

Deuteranomaly
4289617504

Tritanomaly
4292950861

Monochromacy



Original Color
4293014885

Achromatopsia
4285427310

Achromatomaly
4288174443

CSS Examples

Text

The CSS property to change the color of the text to Android 4293014885 is called "color". The color property can be set on classes, ids or directly on the HTML element.

This example shows how text in the color `rgb(226, 53, 101)` looks like.

```
.text, #text, p{  
    color:rgb(226, 53, 101)  
}
```

If you want to add a text shadow in that color use the text-shadow property, you can generate a text shadow directly with our [CSS Text Shadow Generator](#).

Here you see how black text with a 4 pixel rgb(226, 53, 101) colored shadow looks like.

```
.shadow{ text-shadow: 4px 4px 2px rgb(226, 53, 101) }
```

Border

The CSS property to change the border of an element to Android 4293014885 is called "border". The border property can be set on classes, ids or directly on the HTML element.

This example shows the color as border, it can be applied via the CSS property "border" or "border-color".

```
.border, #border, table{ border:4px solid rgb(226, 53, 101) }
```

If only the border color should be changed use the property `border-color`.

```
.border{ border-color:rgb(226, 53, 101) }
```

If you want to add a box shadow in that color use:

Here you see how a box with a 4 pixel `rgb(226, 53, 101)` colored shadow looks like.

```
.boxshadow{ -moz-box-shadow:4px 4px 4px  
4px rgb(226, 53, 101); -webkit-box-  
shadow:4px 4px 4px 4px rgb(226, 53, 101);  
box-shadow:4px 4px 4px 4px rgb(226, 53,  
101) }
```

Background

The CSS property to change the background color of an element to Android 4293014885 is called "background". The background property can be set on classes, ids or directly on the HTML element.

```
.background, #background, body{  
background: rgb(226, 53, 101) }
```

If only the background color should be changed can be used:

```
.background{ background-color: rgb(226, 53,  
101) }
```

This example shows the color as background, it is applied via the CSS property "background".

To optimize and compress your CSS code, you can use our [online CSS compressor and optimizer](#) based on csstidy. If you want to create a linear or radial gradient as background or border, check our [CSS Gradient Generator](#).

Hey! You found this booklet interesting? Support Converting Colors with the new Membership Option!

The pro membership hides all ads, plus gives you double the colors in the color bucket, and more awesome pro features!

[Learn more, Memberships starting at \\$2.50/m!](#)

**Follow me
on Twitter!**

@ConvertingColor