

Converting Colors

Android(4293018477)

Have a look what the booklet for
Android(4293018477) contains.

Android(4293018477)	3
<i>Conversions</i>	4
<i>Details</i>	6
<i>Harmonies</i>	11
<i>Previews</i>	23
<i>Color Blindness Simulation</i>	26
<i>CSS Examples</i>	29

Color

Android(4293018477)

Conversions

Conversions Part 1

Format	Color
Hex	E2436D
RGB	226, 67, 109
RGB Percent	89%, 26%, 43%
CMY	0.1137, 0.7373, 0.5725
CMYK	0.00, 0.70, 0.52, 0.11
HSL	344°, 73%, 57%
HSV	344°, 70%, 89%
XYZ	36.1315, 21.2872, 16.6725
YIQ	119.3290, 81.2820, 46.7700

Conversions

Conversions Part 2

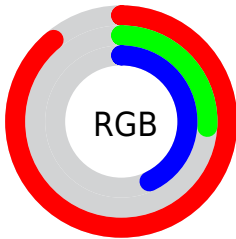
Format	Color
R_{YB}	226, 67, 109
Decimal	14828397
CIE _{Lab}	53.26, 63.66, 12.42
CIE _{LCh}	53, 64.859, 11.040
Yxy	21.2872, 0.4877, 0.2873
Android (android.graphics.Color)	4293018477 (0xFFE2436D)
YUV	119.3290, -5.0922, 93.5505
Hunter-Lab	46.1380, 59.0449, 10.8715

Details

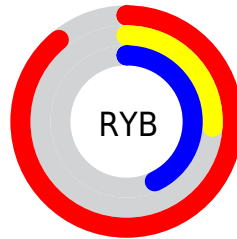
The Android color **4293018477** is a dark color, and the websafe version is hex **CC3366**. The color can be described as middle muted rose. A complement of this color would be **4282639032**, and the grayscale version is **4286019447**.

A 20% lighter version of the original color is **4294933920**, and **4289003582** is the 20% darker color. If you saturate the color by 10%, you get **4293012572**, and if you desaturate by 10%, it is **4293024382**.

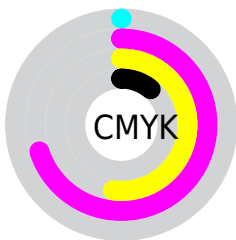
Distribution



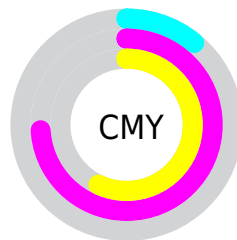
- Red (89%)
- Green (26%)
- Blue (43%)



- Red (89%)
- Yellow (26%)
- Blue (43%)



- Cyan (0%)
- Magenta (70%)
- Yellow (52%)
- Black (11%)



- Cyan (11%)
- Magenta (74%)
- Yellow (57%)

Brightness & Saturation Gradients

These gradients show how the Android color 4293018477 changes by changing the brightness by 10 percent. The first figure shows a shift by +10% for each color and the second figure -10%.

Similar to the brightness gradients but the following saturation gradients show a change of the Android color 4293018477 by changing the saturation by 10% instead.



4293018477



4293018477

4294967295



4290978133



4294933920



4289003582



4294941371



4286971945



4294948823



4285071381



4294956275



4283170818



4294963967



4281204738



4278190080



4293018477



4293018477



4293012572



4293024382

 4293006924

 4293030030

 4293001276

 4293035935

 4293041584

 4293047488

 4293053393

 4293059041

 4293064946

 4293066751

Harmonies

Analogous

The Analogous color harmony consists of three colors that are next to each other on the color wheel.



4291841189



4293018477



4292236856

Triad

The Triadic color harmony groups three colors that are evenly spaced from another and form a triangle on the color wheel.



4293018477



4282880032



4278226921

Complementary

The Complementary color scheme is a pair of colors which are on the opposite of each other on the color wheel.



4293018477



4282639032

Split Complementary

Split-complementary colors differ from the complementary color scheme. The scheme consists of three colors, the original color and two neighbors of the complement color.



4278228936



4293018477



4278228569

Square

The Square scheme is like the rectangle color scheme, but the four colors are evenly spaced on the color wheel.



4293018477



4287005440



4278229395



4278222830

Rectangle

The Rectangle color scheme consists of four colors that form a rectangle on the color wheel.



4293018477



4290930452



4278229395



4278227937

Sweetspot

The Sweet Spot groups the original color and five complimentary colors.



4293018477



4294953432



4290266082



4286603368



4278190080



4286611584

Same Dimension

The Same Dimension uses a secret algorithm to generate beautiful new colors.



4293018477



4294912353



4293027907



4285556072



4289724462



4281335821

Inverse Universe

The Inverse Universe completely reimagines the original color for something new.



4293018477



4294912353



4282629602



4285556072



4289724462



4281335821

Previews

White Background



This preview shows how the Android color 4293018477 looks on a white background.

Color Contrast Check

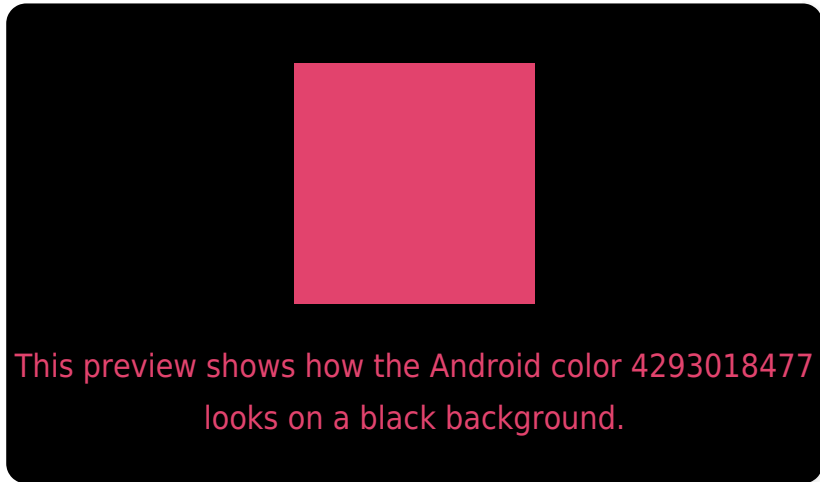
Large Text (above 18pt) WCAG AA ✓ Pass

Any Text WCAG AA ✗ Fail

Large Text (above 18pt) WCAG AAA ✗ Fail

Any Text WCAG AAA ✗ Fail

Black Background



Color Contrast Check

Large Text (above 18pt) WCAG AA ✓ Pass

Any Text WCAG AA ✓ Pass

Large Text (above 18pt) WCAG AAA ✓ Pass

Any Text WCAG AAA × Fail

If you want to check with other color combinations, try the [Color Contrast Checker](#).

Android 4293018477 Background



This preview shows how black text looks on a background with the Android color 4293018477.




This preview shows how white text looks on a background with the Android color 4293018477.

Color Blindness Simulation

Color vision deficiency is a very complex topic, and I could not describe the different causes any better than Wikipedia does, so if you want to learn more, you should check out their [article about color blindness](#).

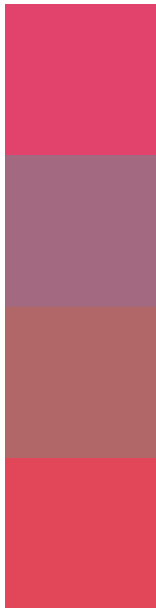
Dichromacy





Tritanopia
4292889166

Trichromacy



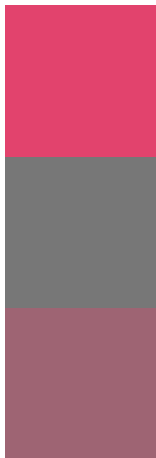
Original Color
4293018477

Protanomaly
4288833921

Deuteranomaly
4289816424

Tritanomaly
4292953945

Monochromacy



Original Color
4293018477

Achromatopsia
4286019447

Achromatomaly
4288570483

CSS Examples

Text

The CSS property to change the color of the text to Android 4293018477 is called "color". The color property can be set on classes, ids or directly on the HTML element.

This example shows how text in the color `rgb(226, 67, 109)` looks like.

```
.text, #text, p{  
    color:rgb(226, 67, 109)  
}
```

If you want to add a text shadow in that color use the text-shadow property, you can generate a text shadow directly with our [CSS Text Shadow Generator](#).

Here you see how black text with a 4 pixel rgb(226, 67, 109) colored shadow looks like.

```
.shadow{ text-shadow: 4px 4px 2px rgb(226, 67, 109) }
```

Border

The CSS property to change the border of an element to Android 4293018477 is called "border". The border property can be set on classes, ids or directly on the HTML element.

This example shows the color as border, it can be applied via the CSS property "border" or "border-color".

```
.border, #border, table{ border:4px solid rgb(226, 67, 109) }
```

If only the border color should be changed use the property border-color.

```
.border{ border-color:rgb(226, 67, 109) }
```

If you want to add a box shadow in that color use:

Here you see how a box with a 4 pixel rgb(226, 67, 109) colored shadow looks like.

```
.boxshadow{ -moz-box-shadow:4px 4px 4px  
4px rgb(226, 67, 109); -webkit-box-  
shadow:4px 4px 4px 4px rgb(226, 67, 109);  
box-shadow:4px 4px 4px 4px rgb(226, 67,  
109) }
```

Background

The CSS property to change the background color of an element to Android 4293018477 is called "background". The background property can be set on classes, ids or directly on the HTML element.

```
.background, #background, body{  
background: rgb(226, 67, 109) }
```

If only the background color should be changed can be used:

```
.background{ background-color: rgb(226, 67,  
109) }
```

This example shows the color as background, it is applied via the CSS property "background".

To optimize and compress your CSS code, you can use our [online CSS compressor and optimizer](#) based on csstidy. If you want to create a linear or radial gradient as background or border, check our [CSS Gradient Generator](#).

Hey! You found this booklet interesting? Support Converting Colors with the new Membership Option!

The pro membership hides all ads, plus gives you double the colors in the color bucket, and more awesome pro features!

[Learn more, Memberships starting at \\$2.50/m!](#)

**Follow me
on Twitter!**

@ConvertingColor