

# Converting Colors

Android(4293034385)

Have a look what the booklet for  
Android(4293034385) contains.

<b>Android(4293034385)</b> .....	3
<i><b>Conversions</b></i> .....	4
<i><b>Details</b></i> .....	6
<i><b>Harmonies</b></i> .....	11
<i><b>Previews</b></i> .....	23
<i><b>Color Blindness Simulation</b></i> .....	26
<i><b>CSS Examples</b></i> .....	29

# **Color**

**Android(4293034385)**

# Conversions

## Conversions Part 1

Format	Color
Hex	E28191
RGB	226, 129, 145
RGB Percent	89%, 51%, 57%
CMY	0.1137, 0.4941, 0.4314
CMYK	0.00, 0.43, 0.36, 0.11
HSL	350°, 63%, 70%
HSV	350°, 43%, 89%
XYZ	44.3251, 33.9136, 30.9979
YIQ	159.8270, 52.6760, 25.5400

# Conversions

## Conversions Part 2

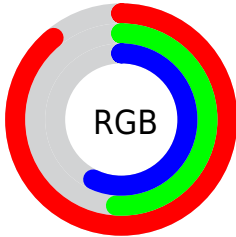
<b>Format</b>	<b>Color</b>
R <sub>Y</sub> B	226, 129, 145
Decimal	14844305
CIE Lab	64.89, 39.06, 7.90
CIE LCh	65, 39.851, 11.439
Yxy	33.9136, 0.4058, 0.3105
Android (android.graphics.Color)	4293034385 (0xFFE28191)
YUV	159.8270, -7.3097, 58.0337
Hunter-Lab	58.2354, 33.9511, 9.2056

# Details

The Android color `4293034385` is a light color, and the websafe version is hex `FF9999`. A complement of this color would be `4286702290`, and the grayscale version is `4288716960`.

A 20% lighter version of the original color is `4294948807`, and `4289219935` is the 20% darker color. If you saturate the color by 10%, you get `4293028478`, and if you desaturate by 10%, it is `4293040292`.

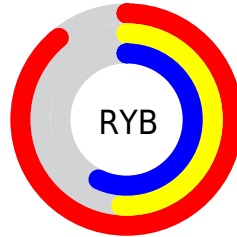
# Distribution



Red (89%)

Green (51%)

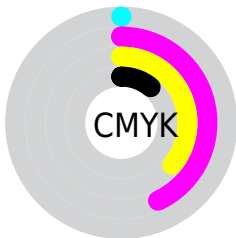
Blue (57%)



Red (89%)

Yellow (51%)

Blue (57%)

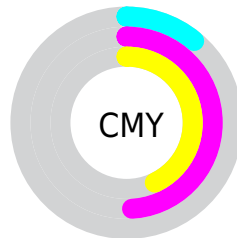


Cyan (0%)

Magenta (43%)

Yellow (36%)

Black (11%)



Cyan (11%)

Magenta (49%)

Yellow (43%)

# Brightness & Saturation Gradients

These gradients show how the Android color 4293034385 changes by changing the brightness by 10 percent. The first figure shows a shift by +10% for each color and the second figure -10%.

Similar to the brightness gradients but the following saturation gradients show a change of the Android color 4293034385 by changing the saturation by 10% instead.



 4293034385

 4293034385

4294967295

 4291127159

 4294948807

 4289219935

 4294956259

 4287378503

 4294963455

 4285536561

 4283760668

 4282122241

 4280221697

 4278190080

 4293034385

 4293034385

 4293028478

 4293040292

 4293022827

 4293045943

 4293016920

 4293051850

 4293011270

 4293057500

 4293005363

 4293063407

 4293001253

 4293066751

# Harmonies

## Analogous

The Analogous color harmony consists of three colors that are next to each other on the color wheel.



4292117685



4293034385



4292642928

# Triad

The Triadic color harmony groups three colors that are evenly spaced from another and form a triangle on the color wheel.



4293034385



4286622055



4281706464

# Complementary

The Complementary color scheme is a pair of colors which are on the opposite of each other on the color wheel.



4293034385



4286702290

# Split Complementary

Split-complementary colors differ from the complementary color scheme. The scheme consists of three colors, the original color and two neighbors of the complement color.



4278234828



4293034385



4283477894

# Square

The Square scheme is like the rectangle color scheme, but the four colors are evenly spaced on the color wheel.



4293034385



4289175638



4278235306



4286487779

# Rectangle

The Rectangle color scheme consists of four colors that form a rectangle on the color wheel.



4293034385



4291792736



4278235306



4278430427



# Sweetspot

The Sweet Spot groups the original color and five complimentary colors.



4293034385



4294958819



4291985890



4286606190



4278190080



4286611584



# Same Dimension

The Same Dimension uses a secret algorithm to generate beautiful new colors.



4293034385



4294933136



4293042561



4285556071



4289724445



4281335816



# Inverse Universe

The Inverse Universe completely reimagines the original color for something new.



4293034385



4294933136



4286694114



4285556071



4289724445



4281335816



# Previews

## White Background



This preview shows how the Android color 4293034385 looks on a white background.

## Color Contrast Check

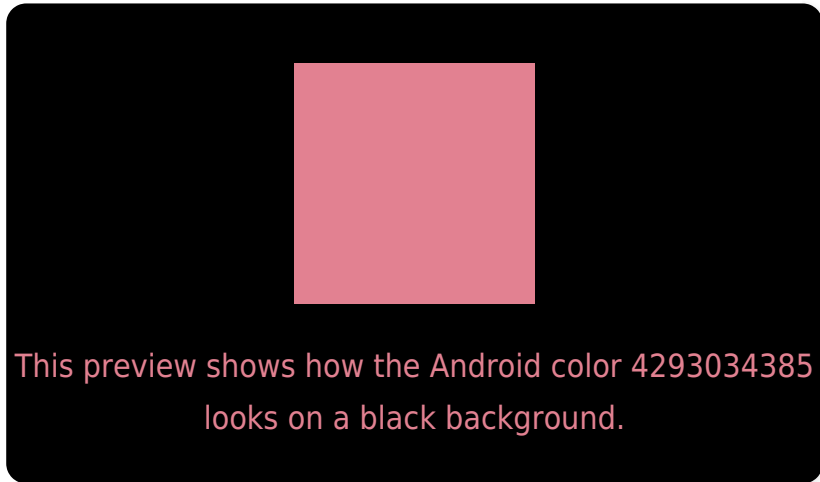
Large Text (above 18pt) WCAG AA × Fail

Any Text WCAG AA × Fail

Large Text (above 18pt) WCAG AAA × Fail

Any Text WCAG AAA × Fail

# Black Background



## Color Contrast Check

Large Text (above 18pt) WCAG AA ✓ Pass

Any Text WCAG AA ✓ Pass

Large Text (above 18pt) WCAG AAA ✓ Pass

Any Text WCAG AAA ✓ Pass

If you want to check with other color combinations, try the [Color Contrast Checker](#).



# Android 4293034385 Background



This preview shows how black text looks on a background with the Android color 4293034385.



This preview shows how white text looks on a background with the Android color 4293034385.

# Color Blindness Simulation

Color vision deficiency is a very complex topic, and I could not describe the different causes any better than Wikipedia does, so if you want to learn more, you should check out their [article about color blindness](#).

## Dichromacy



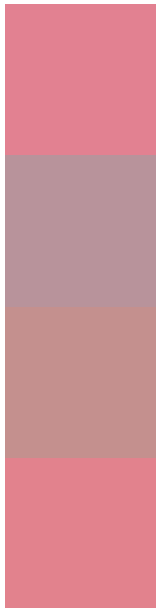
**Original Color**  
4293034385

**Protanopia**  
4288716193

**Deuteranopia**  
4289960077



# Trichromacy



**Original Color**  
4293034385

**Protanomaly**  
4290286491

**Deuteranomaly**  
4291072142

**Tritanomaly**  
4293034637

# Monochromacy



**Original Color**  
4293034385

**Achromatopsia**  
4288716960

**Achromatomaly**  
4290287003

# CSS Examples

## Text

The CSS property to change the color of the text to Android 4293034385 is called "color". The color property can be set on classes, ids or directly on the HTML element.

This example shows how text in the color `rgb(226, 129, 145)` looks like.

```
.text, #text, p{  
    color:rgb(226, 129, 145)  
}
```

If you want to add a text shadow in that color use the text-shadow property, you can generate a text shadow directly with our [CSS Text Shadow Generator](#).

Here you see how black text with a 4 pixel rgb(226, 129, 145) colored shadow looks like.

```
.shadow{ text-shadow: 4px 4px 2px rgb(226, 129, 145) }
```

## Border

The CSS property to change the border of an element to Android 4293034385 is called "border". The border property can be set on classes, ids or directly on the HTML element.

This example shows the color as border, it can be applied via the CSS property "border" or "border-color".

```
.border, #border, table{ border:4px solid rgb(226, 129, 145) }
```

If only the border color should be changed use the property `border-color`.

```
.border{ border-color:rgb(226, 129, 145) }
```

If you want to add a box shadow in that color use:

Here you see how a box with a 4 pixel `rgb(226, 129, 145)` colored shadow looks like.

```
.boxshadow{ -moz-box-shadow:4px 4px 4px 4px rgb(226, 129, 145); -webkit-box-shadow:4px 4px 4px 4px rgb(226, 129, 145); box-shadow:4px 4px 4px 4px rgb(226, 129, 145) }
```

# Background

The CSS property to change the background color of an element to Android 4293034385 is called "background". The background property can be set on classes, ids or directly on the HTML element.

```
.background, #background, body{  
background: rgb(226, 129, 145) }
```

If only the background color should be changed can be used:

```
.background{ background-color: rgb(226,  
129, 145) }
```

This example shows the color as background, it is applied via the CSS property "background".

To optimize and compress your CSS code, you can use our [online CSS compressor and optimizer](#) based on csstidy. If you want to create a linear or radial gradient as background or border, check our [CSS Gradient Generator](#).



Hey! You found this booklet interesting? Support Converting Colors with the new Membership Option!

The pro membership hides all ads, plus gives you double the colors in the color bucket, and more awesome pro features!

**[Learn more, Memberships starting at \\$2.50/m!](#)**

**Follow me  
on Twitter!**

@ConvertingColor