

Converting Colors

Android(4293037985)

Have a look what the booklet for
Android(4293037985) contains.

Android(4293037985)	3
<i>Conversions</i>	4
<i>Details</i>	6
<i>Harmonies</i>	11
<i>Previews</i>	23
<i>Color Blindness Simulation</i>	26
<i>CSS Examples</i>	29

Color

Android(4293037985)

Conversions

Conversions Part 1

Format	Color
Hex	E28FA1
RGB	226, 143, 161
RGB Percent	89%, 56%, 63%
CMY	0.1137, 0.4392, 0.3686
CMYK	0.00, 0.37, 0.29, 0.11
HSL	347°, 59%, 72%
HSV	347°, 37%, 89%
XYZ	47.6195, 38.3869, 38.6178
YIQ	169.8690, 43.6900, 23.1940

Conversions

Conversions Part 2

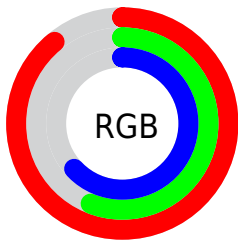
Format	Color
R _Y B	226, 143, 161
Decimal	14847905
CIE Lab	68.30, 33.73, 3.78
CIE LCh	68, 33.946, 6.398
Yxy	38.3869, 0.3821, 0.3080
Android (android.graphics.Color)	4293037985 (0xFFE28FA1)
YUV	169.8690, -4.3724, 49.2269
Hunter-Lab	61.9571, 28.7679, 6.4146

Details

The Android color `4293037985` is a light color, and the websafe version is hex `FF9999`. A complement of this color would be `4287619792`, and the grayscale version is `4289374890`.

A 20% lighter version of the original color is `4294952664`, and `4289289070` is the 20% darker color. If you saturate the color by 10%, you get `4293032079`, and if you desaturate by 10%, it is `4293043891`.

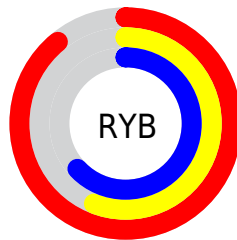
Distribution



Red (89%)

Green (56%)

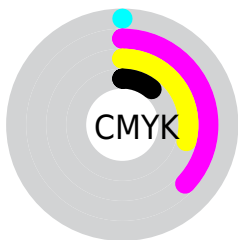
Blue (63%)



Red (89%)

Yellow (56%)

Blue (63%)

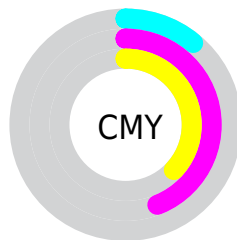


Cyan (0%)

Magenta (37%)

Yellow (29%)

Black (11%)



Cyan (11%)

Magenta (44%)

Yellow (37%)

Brightness & Saturation Gradients

These gradients show how the Android color 4293037985 changes by changing the brightness by 10 percent. The first figure shows a shift by +10% for each color and the second figure -10%.

Similar to the brightness gradients but the following saturation gradients show a change of the Android color 4293037985 by changing the saturation by 10% instead.

 4293037985

 4293037985

4294967295

 4291130759

 4294952664

 4289289070

 4294959860

 4287447637

 4285671998

 4283895848

 4282253332

 4280811521

 4278190080

 4293037985

 4293037985

 4293032079

 4293043891

 4293026430

 4293049540

 4293020524

 4293055446

 4293014874

 4293061096

 4293008969

 4293066745

 4293003063

 4293066751

 4293001265

Harmonies

Analogous

The Analogous color harmony consists of three colors that are next to each other on the color wheel.



4292056000



4293037985



4292907908

Triad

The Triadic color harmony groups three colors that are evenly spaced from another and form a triangle on the color wheel.



4293037985



4287934580



4283805918

Complementary

The Complementary color scheme is a pair of colors which are on the opposite of each other on the color wheel.



4293037985



4287619792

Split Complementary

Split-complementary colors differ from the complementary color scheme. The scheme consists of three colors, the original color and two neighbors of the complement color.



4281775818



4293037985



4285511053

Square

The Square scheme is like the rectangle color scheme, but the four colors are evenly spaced on the color wheel.



4293037985



4290094953



4283021228



4287014883

Rectangle

The Rectangle color scheme consists of four colors that form a rectangle on the color wheel.



4293037985



4292319604



4283021228



4282889177

Sweetspot

The Sweet Spot groups the original color and five complimentary colors.



4293037985



4294960105



4291792866



4286607219



4278190080



4286611584

Same Dimension

The Same Dimension uses a secret algorithm to generate beautiful new colors.



4293037985



4294938535



4293043599



4285556071



4289724454



4281335819

Inverse Universe

The Inverse Universe completely reimagines the original color for something new.



4293037985



4294938535



4287614178



4285556071



4289724454



4281335819

Previews

White Background



This preview shows how the Android color 4293037985 looks on a white background.

Color Contrast Check

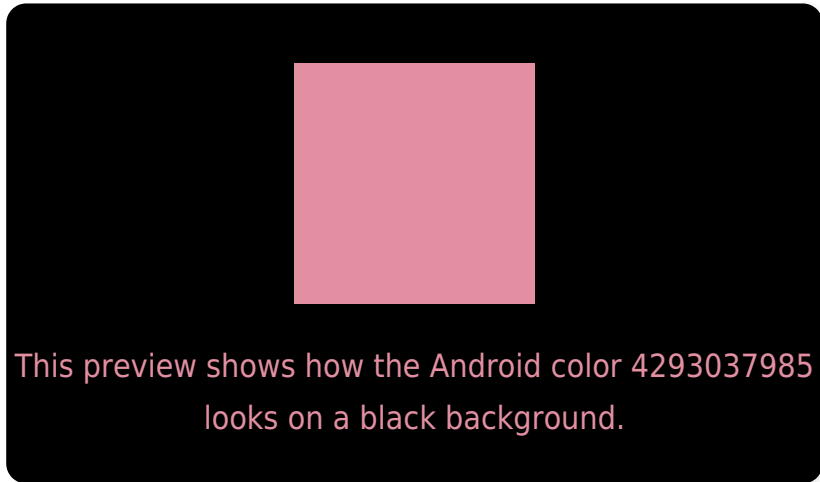
Large Text (above 18pt) WCAG AA × Fail

Any Text WCAG AA × Fail

Large Text (above 18pt) WCAG AAA × Fail

Any Text WCAG AAA × Fail

Black Background



Color Contrast Check

Large Text (above 18pt) WCAG AA ✓ Pass

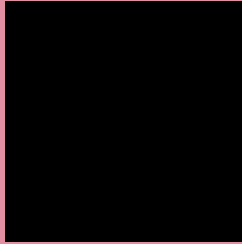
Any Text WCAG AA ✓ Pass

Large Text (above 18pt) WCAG AAA ✓ Pass

Any Text WCAG AAA ✓ Pass

If you want to check with other color combinations, try the [Color Contrast Checker](#).

Android 4293037985 Background



This preview shows how black text looks on a background with the Android color 4293037985.



This preview shows how white text looks on a background with the Android color 4293037985.

Color Blindness Simulation

Color vision deficiency is a very complex topic, and I could not describe the different causes any better than Wikipedia does, so if you want to learn more, you should check out their [article about color blindness](#).

Dichromacy



Original Color
4293037985

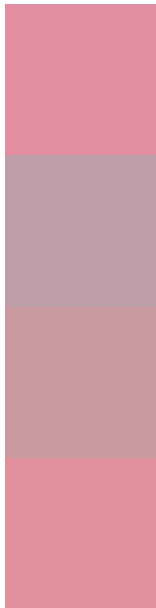
Protanopia
4289242798

Deuteranopia
4290421150



Tritanopia
4292972699

Trichromacy



Original Color
4293037985

Protanomaly
4290617001

Deuteranomaly
4291402399

Tritanomaly
4292972701

Monochromacy



Original Color
4293037985

Achromatopsia
4289374890

Achromatomaly
4290683047

CSS Examples

Text

The CSS property to change the color of the text to Android 4293037985 is called "color". The color property can be set on classes, ids or directly on the HTML element.

This example shows how text in the color `rgb(226, 143, 161)` looks like.

```
.text, #text, p{  
    color:rgb(226, 143, 161)  
}
```

If you want to add a text shadow in that color use the text-shadow property, you can generate a text shadow directly with our [CSS Text Shadow Generator](#).

Here you see how black text with a 4 pixel rgb(226, 143, 161) colored shadow looks like.

```
.shadow{ text-shadow: 4px 4px 2px rgb(226, 143, 161) }
```

Border

The CSS property to change the border of an element to Android 4293037985 is called "border". The border property can be set on classes, ids or directly on the HTML element.

This example shows the color as border, it can be applied via the CSS property "border" or "border-color".

```
.border, #border, table{ border:4px solid rgb(226, 143, 161) }
```

If only the border color should be changed use the property `border-color`.

```
.border{ border-color:rgb(226, 143, 161) }
```

If you want to add a box shadow in that color use:

Here you see how a box with a 4 pixel `rgb(226, 143, 161)` colored shadow looks like.

```
.boxshadow{ -moz-box-shadow:4px 4px 4px 4px rgb(226, 143, 161); -webkit-box-shadow:4px 4px 4px 4px rgb(226, 143, 161); box-shadow:4px 4px 4px 4px rgb(226, 143, 161) }
```

Background

The CSS property to change the background color of an element to Android 4293037985 is called "background". The background property can be set on classes, ids or directly on the HTML element.

```
.background, #background, body{  
background: rgb(226, 143, 161) }
```

If only the background color should be changed can be used:

```
.background{ background-color: rgb(226,  
143, 161) }
```

This example shows the color as background, it is applied via the CSS property "background".

To optimize and compress your CSS code, you can use our [online CSS compressor and optimizer](#) based on csstidy. If you want to create a linear or radial gradient as background or border, check our [CSS Gradient Generator](#).

Hey! You found this booklet interesting? Support Converting Colors with the new Membership Option!

The pro membership hides all ads, plus gives you double the colors in the color bucket, and more awesome pro features!

[Learn more, Memberships starting at \\$2.50/m!](#)

**Follow me
on Twitter!**

@ConvertingColor