

Converting Colors

Android(4293038501)

Have a look what the booklet for
Android(4293038501) contains.

Android(4293038501)	3
<i>Conversions</i>	4
<i>Details</i>	6
<i>Harmonies</i>	11
<i>Previews</i>	23
<i>Color Blindness Simulation</i>	26
<i>CSS Examples</i>	29

Color

Android(4293038501)

Conversions

Conversions Part 1

Format	Color
Hex	E291A5
RGB	226, 145, 165
RGB Percent	89%, 57%, 65%
CMY	0.1137, 0.4314, 0.3529
CMYK	0.00, 0.36, 0.27, 0.11
HSL	345°, 58%, 73%
HSV	345°, 36%, 89%
XYZ	48.2810, 39.1362, 40.6067
YIQ	171.4990, 41.8560, 23.3920

Conversions

Conversions Part 2

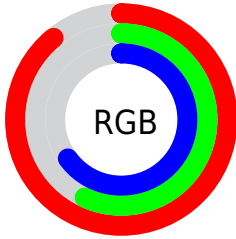
Format	Color
R _Y B	226, 145, 165
Decimal	14848421
CIE Lab	68.85, 33.22, 2.33
CIE LCh	69, 33.298, 4.017
Yxy	39.1362, 0.3771, 0.3057
Android (android.graphics.Color)	4293038501 (0xFFE291A5)
YUV	171.4990, -3.2040, 47.7974
Hunter-Lab	62.5589, 28.2825, 5.3064

Details

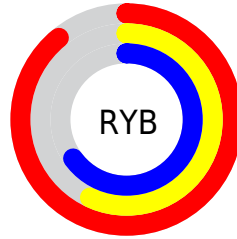
The Android color `4293038501` is a light color, and the websafe version is hex `CC9999`. A complement of this color would be `4287750862`, and the grayscale version is `4289506476`.

A 20% lighter version of the original color is `4294953180`, and `4289289585` is the 20% darker color. If you saturate the color by 10%, you get `4293032596`, and if you desaturate by 10%, it is `4293044406`.

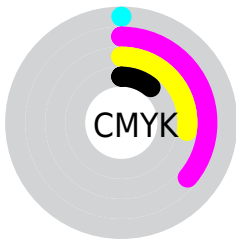
Distribution



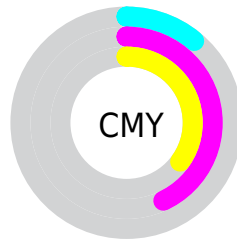
- Red (89%)
- Green (57%)
- Blue (65%)



- Red (89%)
- Yellow (57%)
- Blue (65%)



- Cyan (0%)
- Magenta (36%)
- Yellow (27%)
- Black (11%)



- Cyan (11%)
- Magenta (43%)
- Yellow (35%)

Brightness & Saturation Gradients

These gradients show how the Android color 4293038501 changes by changing the brightness by 10 percent. The first figure shows a shift by +10% for each color and the second figure -10%.

Similar to the brightness gradients but the following saturation gradients show a change of the Android color 4293038501 by changing the saturation by 10% instead.

 4293038501

 4293038501

4294967295

 4291131275

 4294953180

 4289289585

 4294960376

 4287448153

 4285672514

 4283962156

 4282253335

 4280877057

 4278190080

 4293038501

 4293038501

 4293032596

 4293044406

 4293026947

 4293050055

 4293021042

 4293055960

 4293015393

 4293061609

 4293009488

 4293066746

 4293003583

 4293066751

 4293001272

Harmonies

Analogous

The Analogous color harmony consists of three colors that are next to each other on the color wheel.



4291990979



4293038501



4292973704

Triad

The Triadic color harmony groups three colors that are evenly spaced from another and form a triangle on the color wheel.



4293038501



4288196725



4283871965

Complementary

The Complementary color scheme is a pair of colors which are on the opposite of each other on the color wheel.



4293038501



4287750862

Split Complementary

Split-complementary colors differ from the complementary color scheme. The scheme consists of three colors, the original color and two neighbors of the complement color.



4282234825



4293038501



4285904525

Square

The Square scheme is like the rectangle color scheme, but the four colors are evenly spaced on the color wheel.



4293038501



4290357100



4283545771



4286950116

Rectangle

The Rectangle color scheme consists of four colors that form a rectangle on the color wheel.



4293038501



4292450936



4283545771



4283086040

Sweetspot

The Sweet Spot groups the original color and five complimentary colors.



4293038501



4294960106



4291727842



4286607219



4278190080



4286611584

Same Dimension

The Same Dimension uses a secret algorithm to generate beautiful new colors.



4293038501



4294939052



4293043601



4285556072



4289724459



4281335820

Inverse Universe

The Inverse Universe completely reimagines the original color for something new.



4293038501



4294939052



4287745762



4285556072



4289724459



4281335820

Previews

White Background



This preview shows how the Android color 4293038501 looks on a white background.

Color Contrast Check

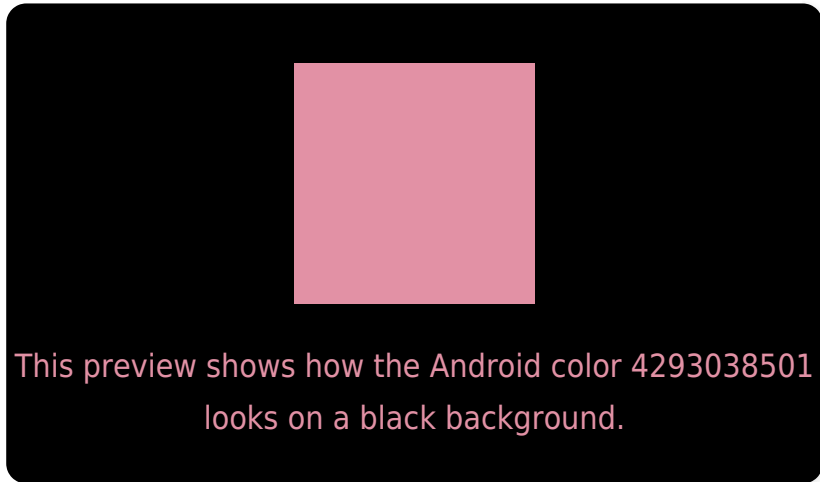
Large Text (above 18pt) WCAG AA × Fail

Any Text WCAG AA × Fail

Large Text (above 18pt) WCAG AAA × Fail

Any Text WCAG AAA × Fail

Black Background



Color Contrast Check

Large Text (above 18pt) WCAG AA ✓ Pass

Any Text WCAG AA ✓ Pass

Large Text (above 18pt) WCAG AAA ✓ Pass

Any Text WCAG AAA ✓ Pass

If you want to check with other color combinations, try the [Color Contrast Checker](#).

Android 4293038501 Background



This preview shows how black text looks on a background with the Android color 4293038501.




This preview shows how white text looks on a background with the Android color 4293038501.

Color Blindness Simulation

Color vision deficiency is a very complex topic, and I could not describe the different causes any better than Wikipedia does, so if you want to learn more, you should check out their [article about color blindness](#).

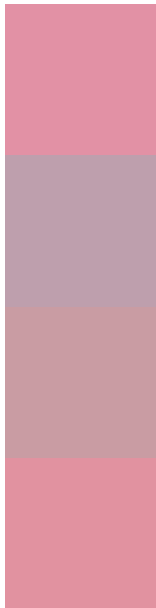
Dichromacy





Tritanopia
4292973213

Trichromacy



Original Color
4293038501

Protanomaly
4290682797

Deuteranomaly
4291402915

Tritanomaly
4292973216

Monochromacy



Original Color
4293038501

Achromatopsia
4289440683

Achromatomaly
4290749097

CSS Examples

Text

The CSS property to change the color of the text to Android 4293038501 is called "color". The color property can be set on classes, ids or directly on the HTML element.

This example shows how text in the color `rgb(226, 145, 165)` looks like.

```
.text, #text, p{  
    color:rgb(226, 145, 165)  
}
```

If you want to add a text shadow in that color use the text-shadow property, you can generate a text shadow directly with our [CSS Text Shadow Generator](#).

Here you see how black text with a 4 pixel rgb(226, 145, 165) colored shadow looks like.

```
.shadow{ text-shadow: 4px 4px 2px rgb(226, 145, 165) }
```

Border

The CSS property to change the border of an element to Android 4293038501 is called "border". The border property can be set on classes, ids or directly on the HTML element.

This example shows the color as border, it can be applied via the CSS property "border" or "border-color".

```
.border, #border, table{ border:4px solid rgb(226, 145, 165) }
```

If only the border color should be changed use the property `border-color`.

```
.border{ border-color:rgb(226, 145, 165) }
```

If you want to add a box shadow in that color use:

Here you see how a box with a 4 pixel `rgb(226, 145, 165)` colored shadow looks like.

```
.boxshadow{ -moz-box-shadow:4px 4px 4px 4px rgb(226, 145, 165); -webkit-box-shadow:4px 4px 4px 4px rgb(226, 145, 165); box-shadow:4px 4px 4px 4px rgb(226, 145, 165) }
```

Background

The CSS property to change the background color of an element to Android 4293038501 is called "background". The background property can be set on classes, ids or directly on the HTML element.

```
.background, #background, body{  
background: rgb(226, 145, 165) }
```

If only the background color should be changed can be used:

```
.background{ background-color: rgb(226,  
145, 165) }
```

This example shows the color as background, it is applied via the CSS property "background".

To optimize and compress your CSS code, you can use our [online CSS compressor and optimizer](#) based on csstidy. If you want to create a linear or radial gradient as background or border, check our [CSS Gradient Generator](#).

Hey! You found this booklet interesting? Support Converting Colors with the new Membership Option!

The pro membership hides all ads, plus gives you double the colors in the color bucket, and more awesome pro features!

[Learn more, Memberships starting at \\$2.50/m!](#)

**Follow me
on Twitter!**

@ConvertingColor