

# Converting Colors

Android(4293041320)

Have a look what the booklet for  
Android(4293041320) contains.

<b>Android(4293041320)</b> .....	3
<i><b>Conversions</b></i> .....	4
<i><b>Details</b></i> .....	6
<i><b>Harmonies</b></i> .....	11
<i><b>Previews</b></i> .....	23
<i><b>Color Blindness Simulation</b></i> .....	26
<i><b>CSS Examples</b></i> .....	29

# **Color**

**Android(4293041320)**

# Conversions

## Conversions Part 1

Format	Color
Hex	E29CA8
RGB	226, 156, 168
RGB Percent	89%, 61%, 66%
CMY	0.1137, 0.3882, 0.3412
CMYK	0.00, 0.31, 0.26, 0.11
HSL	350°, 55%, 75%
HSV	350°, 31%, 89%
XYZ	50.3204, 42.7728, 42.6496
YIQ	178.2980, 37.8680, 18.5720

# Conversions

## Conversions Part 2

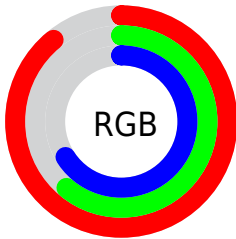
Format	Color
R <sub>Y</sub> B	226, 156, 168
Decimal	14851240
CIE Lab	71.40, 27.76, 4.36
CIE LCh	71, 28.101, 8.917
Yxy	42.7728, 0.3707, 0.3151
Android (android.graphics.Color)	4293041320 (0xFFE29CA8)
YUV	178.2980, -5.0769, 41.8347
Hunter-Lab	65.4009, 22.8887, 7.1162

# Details

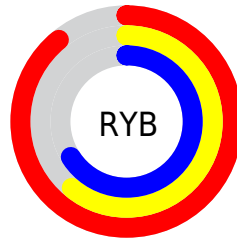
The Android color `4293041320` is a light color, and the websafe version is hex `CC9999`. A complement of this color would be `4288471766`, and the grayscale version is `4289901234`.

A 20% lighter version of the original color is `4294955999`, and `4289292404` is the 20% darker color. If you saturate the color by 10%, you get `4293035413`, and if you desaturate by 10%, it is `4293047227`.

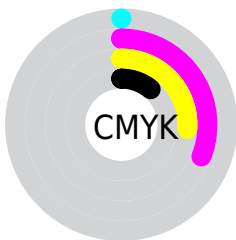
# Distribution



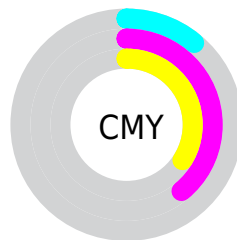
- Red (89%)
- Green (61%)
- Blue (66%)



- Red (89%)
- Yellow (61%)
- Blue (66%)



- Cyan (0%)
- Magenta (31%)
- Yellow (26%)
- Black (11%)



- Cyan (11%)
- Magenta (39%)
- Yellow (34%)

# Brightness & Saturation Gradients

These gradients show how the Android color 4293041320 changes by changing the brightness by 10 percent. The first figure shows a shift by +10% for each color and the second figure -10%.


Similar to the brightness gradients but the following saturation gradients show a change of the Android color 4293041320 by changing the saturation by 10% instead.



 4293041320

 4293041320

4294967295

 4291134094

 4294955999

 4289292404


 4294963452

 4287516508

 4285740868

 4284031022

 4282386457

 4281008128

 4278190080

 4293041320

 4293041320

 4293035413

 4293047227

 4293029763

 4293052877

 4293023856

 4293058784

 4293018205

 4293064435

 4293012298

 4293066751

 4293006392

 4293001255

# Harmonies

## Analogous

The Analogous color harmony consists of three colors that are next to each other on the color wheel.



4292255426



4293041320



4292910992

# Triad

The Triadic color harmony groups three colors that are evenly spaced from another and form a triangle on the color wheel.



4293041320



4288526214



4285970142

# Complementary

The Complementary color scheme is a pair of colors which are on the opposite of each other on the color wheel.



4293041320



4288471766

# Split Complementary

Split-complementary colors differ from the complementary color scheme. The scheme consists of three colors, the original color and two neighbors of the complement color.



4284595406



4293041320



4286626972

# Square

The Square scheme is like the rectangle color scheme, but the four colors are evenly spaced on the color wheel.



4293041320



4290424956



4284988854



4288262113

# Rectangle

The Rectangle color scheme consists of four colors that form a rectangle on the color wheel.



4293041320



4292322436



4284988854



4285315546

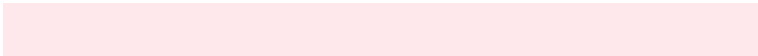


# Sweetspot

The Sweet Spot groups the original color and five complimentary colors.



4293041320



4294961388



4292189410



4286607732



4278190080



4286611584



# Same Dimension

The Same Dimension uses a secret algorithm to generate beautiful new colors.



4293041320



4294943153



4293046940



4285556071



4289724446



4281335816



# Inverse Universe

The Inverse Universe completely reimagines the original color for something new.



4293041320



4294943153



4288466146



4285556071



4289724446



4281335816



# Previews

## White Background



This preview shows how the Android color 4293041320 looks on a white background.

## Color Contrast Check

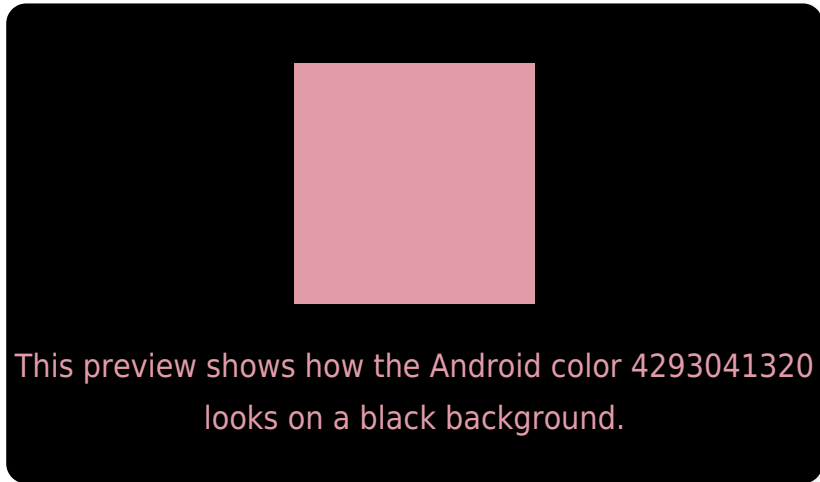
Large Text (above 18pt) WCAG AA × Fail

Any Text WCAG AA × Fail

Large Text (above 18pt) WCAG AAA × Fail

Any Text WCAG AAA × Fail

# Black Background



## Color Contrast Check

Large Text (above 18pt) WCAG AA ✓ Pass

Any Text WCAG AA ✓ Pass

Large Text (above 18pt) WCAG AAA ✓ Pass

Any Text WCAG AAA ✓ Pass

If you want to check with other color combinations, try the [Color Contrast Checker](#).



# Android 4293041320 Background



This preview shows how black text looks on a background with the Android color 4293041320.



This preview shows how white text looks on a background with the Android color 4293041320.

# Color Blindness Simulation

Color vision deficiency is a very complex topic, and I could not describe the different causes any better than Wikipedia does, so if you want to learn more, you should check out their [article about color blindness](#).


## Dichromacy



**Original Color**  
4293041320

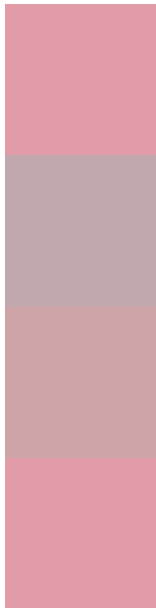
**Protanopia**  
4289834674

**Deuteranopia**  
4291078566



**Tritanopia**  
4293041320

# Trichromacy



**Original Color**  
4293041320

**Protanomaly**  
4291012526

**Deuteranomaly**  
4291798183

**Tritanomaly**  
4293041320

# Monochromacy



**Original Color**  
4293041320

**Achromatopsia**  
4289901234

**Achromatomaly**  
4291013294

# CSS Examples

## Text

The CSS property to change the color of the text to Android 4293041320 is called "color". The color property can be set on classes, ids or directly on the HTML element.

This example shows how text in the color `rgb(226, 156, 168)` looks like.

```
.text, #text, p{  
    color:rgb(226, 156, 168)  
}
```

If you want to add a text shadow in that color use the text-shadow property, you can generate a text shadow directly with our [CSS Text Shadow Generator](#).

Here you see how black text with a 4 pixel rgb(226, 156, 168) colored shadow looks like.

```
.shadow{ text-shadow: 4px 4px 2px rgb(226, 156, 168) }
```

## Border

The CSS property to change the border of an element to Android 4293041320 is called "border". The border property can be set on classes, ids or directly on the HTML element.

This example shows the color as border, it can be applied via the CSS property "border" or "border-color".

```
.border, #border, table{ border:4px solid rgb(226, 156, 168) }
```

If only the border color should be changed use the property `border-color`.

```
.border{ border-color:rgb(226, 156, 168) }
```

If you want to add a box shadow in that color use:

Here you see how a box with a 4 pixel `rgb(226, 156, 168)` colored shadow looks like.

```
.boxshadow{ -moz-box-shadow:4px 4px 4px  
4px rgb(226, 156, 168); -webkit-box-  
shadow:4px 4px 4px 4px rgb(226, 156, 168);  
box-shadow:4px 4px 4px 4px rgb(226, 156,  
168) }
```

# Background

The CSS property to change the background color of an element to Android 4293041320 is called "background". The background property can be set on classes, ids or directly on the HTML element.

```
.background, #background, body{  
background: rgb(226, 156, 168) }
```

If only the background color should be changed can be used:

```
.background{ background-color: rgb(226,  
156, 168) }
```

This example shows the color as background, it is applied via the CSS property "background".

To optimize and compress your CSS code, you can use our [online CSS compressor and optimizer](#) based on csstidy. If you want to create a linear or radial gradient as background or border, check our [CSS Gradient Generator](#).



Hey! You found this booklet interesting? Support Converting Colors with the new Membership Option!

The pro membership hides all ads, plus gives you double the colors in the color bucket, and more awesome pro features!

**[Learn more, Memberships starting at \\$2.50/m!](#)**

**Follow me  
on Twitter!**

@ConvertingColor