

Converting Colors

Android(4293046207)

Have a look what the booklet for
Android(4293046207) contains.

Android(4293046207)	3
<i>Conversions</i>	4
<i>Details</i>	6
<i>Harmonies</i>	11
<i>Previews</i>	23
<i>Color Blindness Simulation</i>	26
<i>CSS Examples</i>	29

Color

Android(4293046207)

Conversions

Conversions Part 1

Format	Color
Hex	E2AFBF
RGB	226, 175, 191
RGB Percent	89%, 69%, 75%
CMY	0.1137, 0.3137, 0.2510
CMYK	0.00, 0.23, 0.15, 0.11
HSL	341°, 47%, 79%
HSV	341°, 23%, 89%
XYZ	56.0980, 50.5903, 56.0984
YIQ	192.0730, 25.2600, 15.7880

Conversions

Conversions Part 2

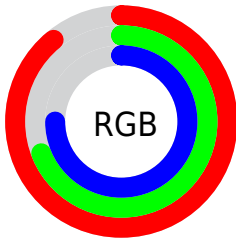
Format	Color
R_{YB}	226, 175, 191
Decimal	14856127
CIE _{Lab}	76.43, 21.00, -0.97
CIE _{LCh}	76, 21.027, 357.350
Yxy	50.5903, 0.3446, 0.3108
Android (android.graphics.Color)	4293046207 (0xFFE2AFBF)
YUV	192.0730, -0.5290, 29.7540
Hunter-Lab	71.1268, 16.3115, 3.0262

Details

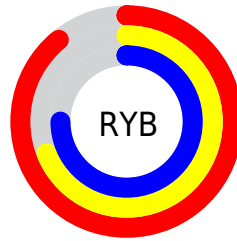
The Android color `4293046207` is a light color, and the websafe version is hex `CC9999`. A complement of this color would be `4289716946`, and the grayscale version is `4290822336`.

A 20% lighter version of the original color is `4294961143`, and `4289362570` is the 20% darker color. If you saturate the color by 10%, you get `4293040303`, and if you desaturate by 10%, it is `4293052111`.

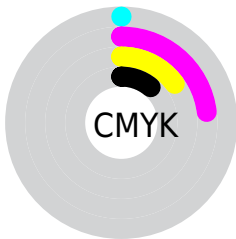
Distribution



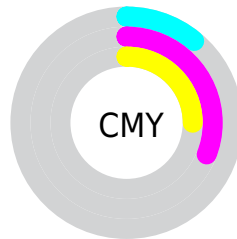
- Red (89%)
- Green (69%)
- Blue (75%)



- Red (89%)
- Yellow (69%)
- Blue (75%)



- Cyan (0%)
- Magenta (23%)
- Yellow (15%)
- Black (11%)



- Cyan (11%)
- Magenta (31%)
- Yellow (25%)

Brightness & Saturation Gradients

These gradients show how the Android color 4293046207 changes by changing the brightness by 10 percent. The first figure shows a shift by +10% for each color and the second figure -10%.

Similar to the brightness gradients but the following saturation gradients show a change of the Android color 4293046207 by changing the saturation by 10% instead.

 4293046207

 4293046207

4294967295

 4291204260

 4294961143

 4289362570

 4287586672

 4285876568

 4284232257

 4282588203

 4281075222

 4279107584

 4278190080

 4293046207

 4293046207

 4293040303

 4293052111

 4293034656

 4293057758

 4293028752

 4293063662

 4293023105

 4293066749

 4293017201

 4293066751

 4293011298

 4293005650

 4293001287

Harmonies

Analogous

The Analogous color harmony consists of three colors that are next to each other on the color wheel.



4292129490



4293046207



4293243052

Triad

The Triadic color harmony groups three colors that are evenly spaced from another and form a triangle on the color wheel.



4293046207



4290298266



4287612125

Complementary

The Complementary color scheme is a pair of colors which are on the opposite of each other on the color wheel.



4293046207



4289716946

Split Complementary

Split-complementary colors differ from the complementary color scheme. The scheme consists of three colors, the original color and two neighbors of the complement color.



4287088590



4293046207



4288857511

Square

The Square scheme is like the rectangle color scheme, but the four colors are evenly spaced on the color wheel.



4293046207



4291672982



4287678650



4288987107

Rectangle

The Rectangle color scheme consists of four colors that form a rectangle on the color wheel.



4293046207



4292981665



4287678650



4287350232

Sweetspot

The Sweet Spot groups the original color and five complimentary colors.



4293046207



4294962675



4291997666



4286608761



4278190080



4286611584

Same Dimension

The Same Dimension uses a secret algorithm to generate beautiful new colors.



4293046207



4294949584



4293048495



4285556073



4289724471



4281335823

Inverse Universe

The Inverse Universe completely reimagines the original color for something new.



4293046207



4294949584



4289714658



4285556073



4289724471



4281335823

Previews

White Background



This preview shows how the Android color 4293046207 looks on a white background.

Color Contrast Check

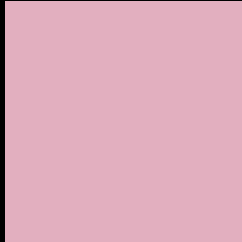
Large Text (above 18pt) WCAG AA × Fail

Any Text WCAG AA × Fail

Large Text (above 18pt) WCAG AAA × Fail

Any Text WCAG AAA × Fail

Black Background



This preview shows how the Android color 4293046207 looks on a black background.

Color Contrast Check

Large Text (above 18pt) WCAG AA ✓ Pass

Any Text WCAG AA ✓ Pass

Large Text (above 18pt) WCAG AAA ✓ Pass

Any Text WCAG AAA ✓ Pass

If you want to check with other color combinations, try the [Color Contrast Checker](#).

Android 4293046207 Background



This preview shows how black text looks on a background with the Android color 4293046207.



This preview shows how white text looks on a background with the Android color 4293046207.

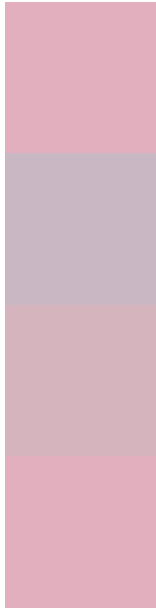
Color Blindness Simulation

Color vision deficiency is a very complex topic, and I could not describe the different causes any better than Wikipedia does, so if you want to learn more, you should check out their [article about color blindness](#).

Dichromacy



Trichromacy



Original Color
4293046207

Protanomaly
4291475396

Deuteranomaly
4292261054

Tritanomaly
4293046206

Monochromacy



Original Color
4293046207

Achromatopsia
4290822336

Achromatomaly
4291607232

CSS Examples

Text

The CSS property to change the color of the text to Android 4293046207 is called "color". The color property can be set on classes, ids or directly on the HTML element.

This example shows how text in the color `rgb(226, 175, 191)` looks like.

```
.text, #text, p{  
    color:rgb(226, 175, 191)  
}
```

If you want to add a text shadow in that color use the text-shadow property, you can generate a text shadow directly with our [CSS Text Shadow Generator](#).

Here you see how black text with a 4 pixel rgb(226, 175, 191) colored shadow looks like.

```
.shadow{ text-shadow: 4px 4px 2px rgb(226, 175, 191) }
```

Border

The CSS property to change the border of an element to Android 4293046207 is called "border". The border property can be set on classes, ids or directly on the HTML element.

This example shows the color as border, it can be applied via the CSS property "border" or "border-color".

```
.border, #border, table{ border:4px solid rgb(226, 175, 191) }
```

If only the border color should be changed use the property `border-color`.

```
.border{ border-color:rgb(226, 175, 191) }
```

If you want to add a box shadow in that color use:

Here you see how a box with a 4 pixel `rgb(226, 175, 191)` colored shadow looks like.

```
.boxshadow{ -moz-box-shadow:4px 4px 4px  
4px rgb(226, 175, 191); -webkit-box-  
shadow:4px 4px 4px 4px rgb(226, 175, 191);  
box-shadow:4px 4px 4px 4px rgb(226, 175,  
191) }
```

Background

The CSS property to change the background color of an element to Android 4293046207 is called "background". The background property can be set on classes, ids or directly on the HTML element.

```
.background, #background, body{  
background: rgb(226, 175, 191) }
```

If only the background color should be changed can be used:

```
.background{ background-color: rgb(226,  
175, 191) }
```

This example shows the color as background, it is applied via the CSS property "background".

To optimize and compress your CSS code, you can use our [online CSS compressor and optimizer](#) based on csstidy. If you want to create a linear or radial gradient as background or border, check our [CSS Gradient Generator](#).

Hey! You found this booklet interesting? Support Converting Colors with the new Membership Option!

The pro membership hides all ads, plus gives you double the colors in the color bucket, and more awesome pro features!

[Learn more, Memberships starting at \\$2.50/m!](#)

**Follow me
on Twitter!**

@ConvertingColor