

Converting Colors

Android(4293047197)

Have a look what the booklet for
Android(4293047197) contains.

Android(4293047197)	3
<i>Conversions</i>	4
<i>Details</i>	6
<i>Harmonies</i>	11
<i>Previews</i>	23
<i>Color Blindness Simulation</i>	26
<i>CSS Examples</i>	29

Color

Android(4293047197)

Conversions

Conversions Part 1

Format	Color
Hex	E2B39D
RGB	226, 179, 157
RGB Percent	89%, 70%, 62%
CMY	0.1137, 0.2980, 0.3843
CMYK	0.00, 0.21, 0.31, 0.11
HSL	19°, 54%, 75%
HSV	19°, 31%, 89%
XYZ	53.5699, 50.8433, 38.8886
YIQ	190.5450, 35.0740, 3.1220

Conversions

Conversions Part 2

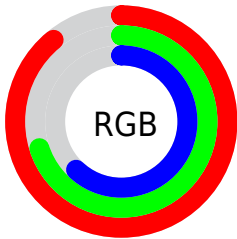
Format	Color
R _Y B	226, 189, 157
Decimal	14857117
CIE Lab	76.58, 13.94, 17.73
CIE LCh	77, 22.554, 51.810
Yxy	50.8433, 0.3738, 0.3548
Android (android.graphics.Color)	4293047197 (0xFFE2B39D)
YUV	190.5450, -16.5377, 31.0940
Hunter-Lab	71.3045, 9.3214, 17.5771

Details

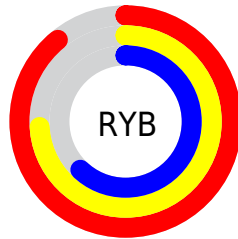
The Android color `4293047197` is a light color, and the websafe version is hex `CC9999`. A complement of this color would be `4288531682`, and the grayscale version is `4290756543`.

A 20% lighter version of the original color is `4294962132`, and `4289298026` is the 20% darker color. If you saturate the color by 10%, you get `4293043334`, and if you desaturate by 10%, it is `4293051060`.

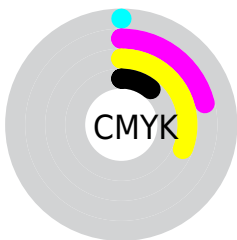
Distribution



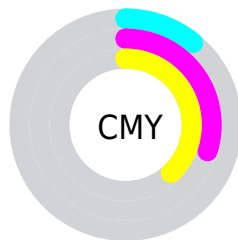
- Red (89%)
- Green (70%)
- Blue (62%)



- Red (89%)
- Yellow (74%)
- Blue (62%)



- Cyan (0%)
- Magenta (21%)
- Yellow (31%)
- Black (11%)



- Cyan (11%)
- Magenta (30%)
- Yellow (38%)

Brightness & Saturation Gradients

These gradients show how the Android color 4293047197 changes by changing the brightness by 10 percent. The first figure shows a shift by +10% for each color and the second figure -10%.

Similar to the brightness gradients but the following saturation gradients show a change of the Android color 4293047197 by changing the saturation by 10% instead.

 4293047197

 4293047197

4294967295

 4291139715

 4294962132

 4289298026

 4294967280

 4287522129

 4285812026

 4284102180

 4282458128

 4280945664

 4278190080

 4293047197

 4293047197

 4293043334

 4293051060

 4293039216

 4293055178

 4293035353

 4293059041

 4293031235

 4293063159

 4293027372

 4293066751

 4293023509

 4293019648

Harmonies

Analogous

The Analogous color harmony consists of three colors that are next to each other on the color wheel.



4293439406



4293047197



4292000404

Triad

The Triadic color harmony groups three colors that are evenly spaced from another and form a triangle on the color wheel.



4293047197



4287613366



4290362083

Complementary

The Complementary color scheme is a pair of colors which are on the opposite of each other on the color wheel.



4293047197



4288531682

Split Complementary

Split-complementary colors differ from the complementary color scheme. The scheme consists of three colors, the original color and two neighbors of the complement color.



4288528870



4293047197



4286826956

Square

The Square scheme is like the rectangle color scheme, but the four colors are evenly spaced on the color wheel.



4293047197



4289054371



4287153885



4291998679

Rectangle

The Rectangle color scheme consists of four colors that form a rectangle on the color wheel.



4293047197



4291083924



4287153885



4289772773

Sweetspot

The Sweet Spot groups the original color and five complimentary colors.



4293047197



4294963176



4293041612



4286609009



4278190080



4286611584

Same Dimension

The Same Dimension uses a secret algorithm to generate beautiful new colors.



4293047197



4294950817



4293055901



4285557093



4289738752



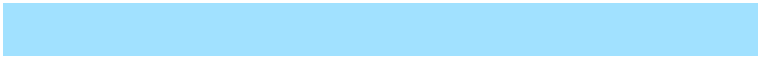
4281339648

Inverse Universe

The Inverse Universe completely reimagines the original color for something new.



4288531682



4288799231



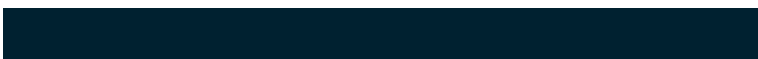
4288522978



4284837232



4278220976



4278198576

Previews

White Background



This preview shows how the Android color 4293047197 looks on a white background.

Color Contrast Check

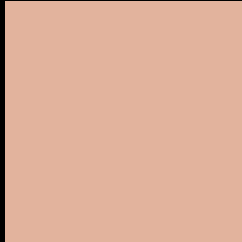
Large Text (above 18pt) WCAG AA × Fail

Any Text WCAG AA × Fail

Large Text (above 18pt) WCAG AAA × Fail

Any Text WCAG AAA × Fail

Black Background



This preview shows how the Android color 4293047197 looks on a black background.

Color Contrast Check

Large Text (above 18pt) WCAG AA ✓ Pass

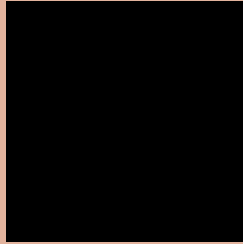
Any Text WCAG AA ✓ Pass

Large Text (above 18pt) WCAG AAA ✓ Pass

Any Text WCAG AAA ✓ Pass

If you want to check with other color combinations, try the [Color Contrast Checker](#).

Android 4293047197 Background



This preview shows how black text looks on a background with the Android color 4293047197.




This preview shows how white text looks on a background with the Android color 4293047197.

Color Blindness Simulation

Color vision deficiency is a very complex topic, and I could not describe the different causes any better than Wikipedia does, so if you want to learn more, you should check out their [article about color blindness](#).

Dichromacy





Tritanopia
4293242812

Trichromacy



Original Color
4293047197

Protanomaly
4291934624

Deuteranomaly
4292785564

Tritanomaly
4293177521

Monochromacy



Original Color
4293047197

Achromatopsia
4290756543

Achromatomaly
4291607475

CSS Examples

Text

The CSS property to change the color of the text to Android 4293047197 is called "color". The color property can be set on classes, ids or directly on the HTML element.

This example shows how text in the color `rgb(226, 179, 157)` looks like.

```
.text, #text, p{  
    color:rgb(226, 179, 157)  
}
```

If you want to add a text shadow in that color use the text-shadow property, you can generate a text shadow directly with our [CSS Text Shadow Generator](#).

Here you see how black text with a 4 pixel rgb(226, 179, 157) colored shadow looks like.

```
.shadow{ text-shadow: 4px 4px 2px rgb(226, 179, 157) }
```

Border

The CSS property to change the border of an element to Android 4293047197 is called "border". The border property can be set on classes, ids or directly on the HTML element.

This example shows the color as border, it can be applied via the CSS property "border" or "border-color".

```
.border, #border, table{ border:4px solid rgb(226, 179, 157) }
```

If only the border color should be changed use the property `border-color`.

```
.border{ border-color:rgb(226, 179, 157) }
```

If you want to add a box shadow in that color use:

Here you see how a box with a 4 pixel `rgb(226, 179, 157)` colored shadow looks like.

```
.boxshadow{ -moz-box-shadow:4px 4px 4px  
4px rgb(226, 179, 157); -webkit-box-  
shadow:4px 4px 4px 4px rgb(226, 179, 157);  
box-shadow:4px 4px 4px 4px rgb(226, 179,  
157) }
```

Background

The CSS property to change the background color of an element to Android 4293047197 is called "background". The background property can be set on classes, ids or directly on the HTML element.

```
.background, #background, body{  
background: rgb(226, 179, 157) }
```

If only the background color should be changed can be used:

```
.background{ background-color: rgb(226,  
179, 157) }
```

This example shows the color as background, it is applied via the CSS property "background".

To optimize and compress your CSS code, you can use our [online CSS compressor and optimizer](#) based on csstidy. If you want to create a linear or radial gradient as background or border, check our [CSS Gradient Generator](#).

Hey! You found this booklet interesting? Support Converting Colors with the new Membership Option!

The pro membership hides all ads, plus gives you double the colors in the color bucket, and more awesome pro features!

[Learn more, Memberships starting at \\$2.50/m!](#)

**Follow me
on Twitter!**

@ConvertingColor