

Converting Colors

Android(4293048762)

Have a look what the booklet for
Android(4293048762) contains.

Android(4293048762)	3
<i>Conversions</i>	4
<i>Details</i>	6
<i>Harmonies</i>	11
<i>Previews</i>	23
<i>Color Blindness Simulation</i>	26
<i>CSS Examples</i>	29

Color

Android(4293048762)

Conversions

Conversions Part 1

Format	Color
Hex	E2B9BA
RGB	226, 185, 186
RGB Percent	89%, 73%, 73%
CMY	0.1137, 0.2745, 0.2706
CMYK	0.00, 0.18, 0.18, 0.11
HSL	359°, 41%, 81%
HSV	359°, 18%, 89%
XYZ	57.5759, 54.4118, 53.9223
YIQ	197.3730, 24.1150, 9.0030

Conversions

Conversions Part 2

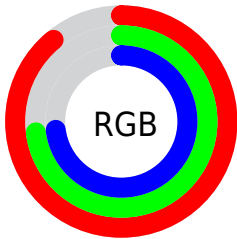
Format	Color
R _Y B	226, 185, 186
Decimal	14858682
CIE Lab	78.70, 14.87, 5.04
CIE LCh	79, 15.699, 18.741
Yxy	54.4118, 0.3470, 0.3280
Android (android.graphics.Color)	4293048762 (0xFFE2B9BA)
YUV	197.3730, -5.6069, 25.1059
Hunter-Lab	73.7644, 10.2384, 8.2936

Details

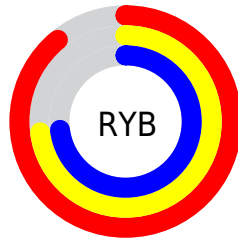
The Android color `4293048762` is a light color, and the websafe version is hex `FFCCCC`. A complement of this color would be `4290372321`, and the grayscale version is `4291151301`.

A 20% lighter version of the original color is `4294963698`, and `4289365125` is the 20% darker color. If you saturate the color by 10%, you get `4293042852`, and if you desaturate by 10%, it is `4293054672`.

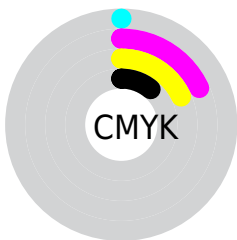
Distribution



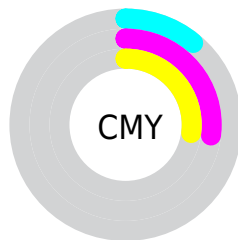
- Red (89%)
- Green (73%)
- Blue (73%)



- Red (89%)
- Yellow (73%)
- Blue (73%)



- Cyan (0%)
- Magenta (18%)
- Yellow (18%)
- Black (11%)



- Cyan (11%)
- Magenta (27%)
- Yellow (27%)

Brightness & Saturation Gradients


These gradients show how the Android color 4293048762 changes by changing the brightness by 10 percent. The first figure shows a shift by +10% for each color and the second figure -10%.

Similar to the brightness gradients but the following saturation gradients show a change of the Android color 4293048762 by changing the saturation by 10% instead.

 4293048762

 4293048762

4294967295

 4291206815

 4294963698

 4289365125

 4287589228

 4285878868

 4284234556

 4282656039

 4281077778

 4279566336

 4278190080

 4293048762

 4293048762

 4293042852

 4293054672

 4293037198

 4293060326

 4293031288

 4293066236

 4293025634

 4293066751

 4293019724

 4293013814

 4293008160

 4293002250

 4293001222

Harmonies

Analogous

The Analogous color harmony consists of three colors that are next to each other on the color wheel.



4292721097



4293048762



4292852909

Triad

The Triadic color harmony groups three colors that are evenly spaced from another and form a triangle on the color wheel.



4293048762



4290038191



4289513183

Complementary

The Complementary color scheme is a pair of colors which are on the opposite of each other on the color wheel.



4293048762



4290372321

Split Complementary

Split-complementary colors differ from the complementary color scheme. The scheme consists of three colors, the original color and two neighbors of the complement color.



4288727512



4293048762



4289055677

Square

The Square scheme is like the rectangle color scheme, but the four colors are evenly spaced on the color wheel.



4293048762



4291151271



4288531404



4290757086

Rectangle

The Rectangle color scheme consists of four colors that form a rectangle on the color wheel.



4293048762



4292394664



4288531404



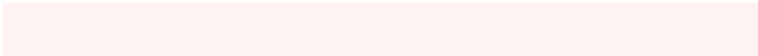
4289185757

Sweetspot

The Sweet Spot groups the original color and five complimentary colors.



4293048762



4294963955



4292983266



4286609528



4278190080



4286611584

Same Dimension

The Same Dimension uses a secret algorithm to generate beautiful new colors.



4293048762



4294952904



4293053625



4285556069



4289724420



4281335809

Inverse Universe

The Inverse Universe completely reimagines the original color for something new.



4293048762



4294952904



4290367458



4285556069



4289724420



4281335809

Previews

White Background



This preview shows how the Android color 4293048762 looks on a white background.

Color Contrast Check

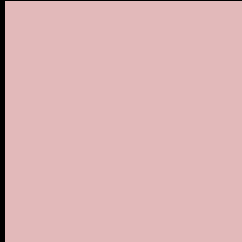
Large Text (above 18pt) WCAG AA × Fail

Any Text WCAG AA × Fail

Large Text (above 18pt) WCAG AAA × Fail

Any Text WCAG AAA × Fail

Black Background



This preview shows how the Android color 4293048762 looks on a black background.

Color Contrast Check

Large Text (above 18pt) WCAG AA ✓ Pass

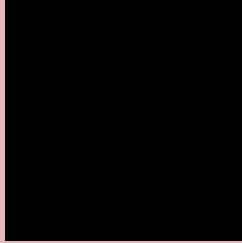
Any Text WCAG AA ✓ Pass

Large Text (above 18pt) WCAG AAA ✓ Pass

Any Text WCAG AAA ✓ Pass

If you want to check with other color combinations, try the [Color Contrast Checker](#).

Android 4293048762 Background



This preview shows how black text looks on a background with the Android color 4293048762.



This preview shows how white text looks on a background with the Android color 4293048762.

Color Blindness Simulation

Color vision deficiency is a very complex topic, and I could not describe the different causes any better than Wikipedia does, so if you want to learn more, you should check out their [article about color blindness](#).

Dichromacy



Original Color
4293048762

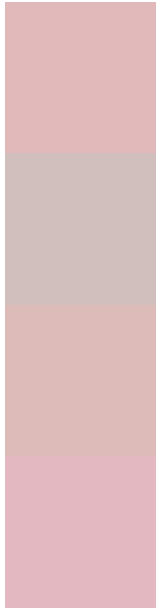
Protanopia
4291281599

Deuteranopia
4292459705



Tritanopia
4293113797

Trichromacy



Original Color
4293048762

Protanomaly
4291936189

Deuteranomaly
4292656057

Tritanomaly
4293114049

Monochromacy



Original Color
4293048762

Achromatopsia
4291151301

Achromatomaly
4291871169

CSS Examples

Text

The CSS property to change the color of the text to Android 4293048762 is called "color". The color property can be set on classes, ids or directly on the HTML element.

This example shows how text in the color `rgb(226, 185, 186)` looks like.

```
.text, #text, p{  
    color:rgb(226, 185, 186)  
}
```

If you want to add a text shadow in that color use the text-shadow property, you can generate a text shadow directly with our [CSS Text Shadow Generator](#).

Here you see how black text with a 4 pixel rgb(226, 185, 186) colored shadow looks like.

```
.shadow{ text-shadow: 4px 4px 2px rgb(226, 185, 186) }
```

Border

The CSS property to change the border of an element to Android 4293048762 is called "border". The border property can be set on classes, ids or directly on the HTML element.

This example shows the color as border, it can be applied via the CSS property "border" or "border-color".

```
.border, #border, table{ border:4px solid rgb(226, 185, 186) }
```

If only the border color should be changed use the property `border-color`.

```
.border{ border-color:rgb(226, 185, 186) }
```

If you want to add a box shadow in that color use:

Here you see how a box with a 4 pixel `rgb(226, 185, 186)` colored shadow looks like.

```
.boxshadow{ -moz-box-shadow:4px 4px 4px 4px rgb(226, 185, 186); -webkit-box-shadow:4px 4px 4px 4px rgb(226, 185, 186); box-shadow:4px 4px 4px 4px rgb(226, 185, 186) }
```

Background

The CSS property to change the background color of an element to Android 4293048762 is called "background". The background property can be set on classes, ids or directly on the HTML element.

```
.background, #background, body{  
background: rgb(226, 185, 186) }
```

If only the background color should be changed can be used:

```
.background{ background-color: rgb(226,  
185, 186) }
```

This example shows the color as background, it is applied via the CSS property "background".

To optimize and compress your CSS code, you can use our [online CSS compressor and optimizer](#) based on csstidy. If you want to create a linear or radial gradient as background or border, check our [CSS Gradient Generator](#).

Hey! You found this booklet interesting? Support Converting Colors with the new Membership Option!

The pro membership hides all ads, plus gives you double the colors in the color bucket, and more awesome pro features!

[Learn more, Memberships starting at \\$2.50/m!](#)

**Follow me
on Twitter!**

@ConvertingColor