

Converting Colors

Android(4293049769)

Have a look what the booklet for
Android(4293049769) contains.

Android(4293049769)	3
<i>Conversions</i>	4
<i>Details</i>	6
<i>Harmonies</i>	11
<i>Previews</i>	23
<i>Color Blindness Simulation</i>	26
<i>CSS Examples</i>	29

Color

Android(4293049769)

Conversions

Conversions Part 1

Format	Color
Hex	E2BDA9
RGB	226, 189, 169
RGB Percent	89%, 74%, 66%
CMY	0.1137, 0.2588, 0.3373
CMYK	0.00, 0.16, 0.25, 0.11
HSL	21°, 50%, 77%
HSV	21°, 25%, 89%
XYZ	56.7231, 55.4285, 45.2453
YIQ	197.7830, 28.4720, 1.6240

Conversions

Conversions Part 2

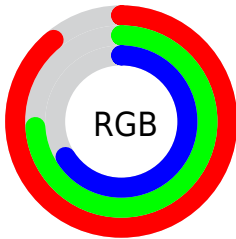
Format	Color
R _Y B	226, 200, 169
Decimal	14859689
CIE Lab	79.29, 10.24, 15.04
CIE LCh	79, 18.198, 55.754
Yxy	55.4285, 0.3604, 0.3522
Android (android.graphics.Color)	4293049769 (0xFFE2BDA9)
YUV	197.7830, -14.1900, 24.7463
Hunter-Lab	74.4503, 5.7095, 16.0833

Details

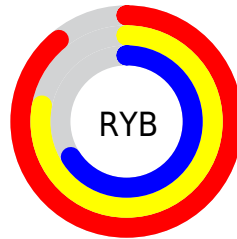
The Android color `4293049769` is a light color, and the websafe version is hex `FFCCCC`. A complement of this color would be `4289318626`, and the grayscale version is `4291217094`.

A 20% lighter version of the original color is `4294964704`, and `4289366133` is the 20% darker color. If you saturate the color by 10%, you get `4293045906`, and if you desaturate by 10%, it is `4293053632`.

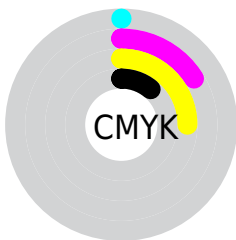
Distribution



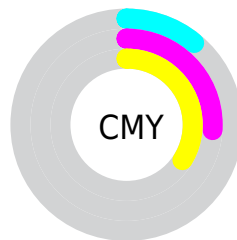
- Red (89%)
- Green (74%)
- Blue (66%)



- Red (89%)
- Yellow (78%)
- Blue (66%)



- Cyan (0%)
- Magenta (16%)
- Yellow (25%)
- Black (11%)



- Cyan (11%)
- Magenta (26%)
- Yellow (34%)

Brightness & Saturation Gradients

These gradients show how the Android color 4293049769 changes by changing the brightness by 10 percent. The first figure shows a shift by +10% for each color and the second figure -10%.

Similar to the brightness gradients but the following saturation gradients show a change of the Android color 4293049769 by changing the saturation by 10% instead.

 4293049769

 4293049769

4294967295

 4291207823

 4294964704

 4289366133

4294967293

 4287589980

 4285879877

 4284170030

 4282591513

 4281078784

 4279304192

 4278190080

 4293049769

 4293049769

 4293045906

 4293053632

 4293042300

 4293057238

 4293038437

 4293061101

 4293034575

 4293064959

 4293030968

 4293066751

 4293027105

 4293023243

 4293021440

Harmonies

Analogous

The Analogous color harmony consists of three colors that are next to each other on the color wheel.



4293441974



4293049769



4292133539

Triad

The Triadic color harmony groups three colors that are evenly spaced from another and form a triangle on the color wheel.



4293049769



4288663233



4291150307

Complementary

The Complementary color scheme is a pair of colors which are on the opposite of each other on the color wheel.



4293049769



4289318626

Split Complementary

Split-complementary colors differ from the complementary color scheme. The scheme consists of three colors, the original color and two neighbors of the complement color.



4289710054



4293049769



4288204498

Square

The Square scheme is like the rectangle color scheme, but the four colors are evenly spaced on the color wheel.



4293049769



4289711281



4288531424



4292394200

Rectangle

The Rectangle color scheme consists of four colors that form a rectangle on the color wheel.



4293049769



4291348132



4288531424



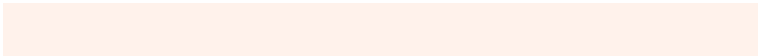
4290626533

Sweetspot

The Sweet Spot groups the original color and five complimentary colors.



4293049769



4294963947



4293044686



4286609267



4278190080



4286611584

Same Dimension

The Same Dimension uses a secret algorithm to generate beautiful new colors.



4293049769



4294954419



4293056937



4285557093



4289740288



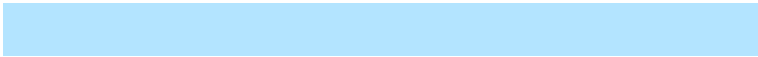
4281340160

Inverse Universe

The Inverse Universe completely reimagines the original color for something new.



4289318626



4289979647



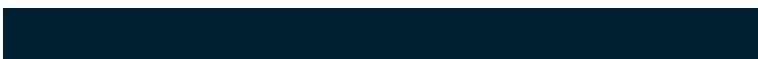
4289311458



4284836976



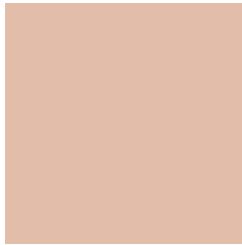
4278219440



4278198064

Previews

White Background



This preview shows how the Android color 4293049769 looks on a white background.

Color Contrast Check

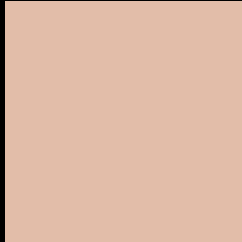
Large Text (above 18pt) WCAG AA × Fail

Any Text WCAG AA × Fail

Large Text (above 18pt) WCAG AAA × Fail

Any Text WCAG AAA × Fail

Black Background



This preview shows how the Android color 4293049769 looks on a black background.

Color Contrast Check

Large Text (above 18pt) WCAG AA ✓ Pass

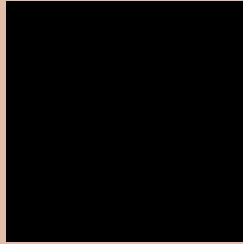
Any Text WCAG AA ✓ Pass

Large Text (above 18pt) WCAG AAA ✓ Pass

Any Text WCAG AAA ✓ Pass

If you want to check with other color combinations, try the [Color Contrast Checker](#).

Android 4293049769 Background



This preview shows how black text looks on a background with the Android color 4293049769.




This preview shows how white text looks on a background with the Android color 4293049769.

Color Blindness Simulation

Color vision deficiency is a very complex topic, and I could not describe the different causes any better than Wikipedia does, so if you want to learn more, you should check out their [article about color blindness](#).

Dichromacy





Tritanopia
4293245383

Trichromacy



Original Color
4293049769

Protanomaly
4292198828

Deuteranomaly
4292984233

Tritanomaly
4293180092

Monochromacy



Original Color
4293049769

Achromatopsia
4291217094

Achromatomaly
4291871675

CSS Examples

Text

The CSS property to change the color of the text to Android 4293049769 is called "color". The color property can be set on classes, ids or directly on the HTML element.

This example shows how text in the color `rgb(226, 189, 169)` looks like.

```
.text, #text, p{  
    color:rgb(226, 189, 169)  
}
```

If you want to add a text shadow in that color use the text-shadow property, you can generate a text shadow directly with our [CSS Text Shadow Generator](#).

Here you see how black text with a 4 pixel rgb(226, 189, 169) colored shadow looks like.

```
.shadow{ text-shadow: 4px 4px 2px rgb(226, 189, 169) }
```

Border

The CSS property to change the border of an element to Android 4293049769 is called "border". The border property can be set on classes, ids or directly on the HTML element.

This example shows the color as border, it can be applied via the CSS property "border" or "border-color".

```
.border, #border, table{ border:4px solid rgb(226, 189, 169) }
```

If only the border color should be changed use the property `border-color`.

```
.border{ border-color:rgb(226, 189, 169) }
```

If you want to add a box shadow in that color use:

Here you see how a box with a 4 pixel `rgb(226, 189, 169)` colored shadow looks like.

```
.boxshadow{ -moz-box-shadow:4px 4px 4px  
4px rgb(226, 189, 169); -webkit-box-  
shadow:4px 4px 4px 4px rgb(226, 189, 169);  
box-shadow:4px 4px 4px 4px rgb(226, 189,  
169) }
```

Background

The CSS property to change the background color of an element to Android 4293049769 is called "background". The background property can be set on classes, ids or directly on the HTML element.

```
.background, #background, body{  
background: rgb(226, 189, 169) }
```

If only the background color should be changed can be used:

```
.background{ background-color: rgb(226,  
189, 169) }
```

This example shows the color as background, it is applied via the CSS property "background".

To optimize and compress your CSS code, you can use our [online CSS compressor and optimizer](#) based on csstidy. If you want to create a linear or radial gradient as background or border, check our [CSS Gradient Generator](#).

Hey! You found this booklet interesting? Support Converting Colors with the new Membership Option!

The pro membership hides all ads, plus gives you double the colors in the color bucket, and more awesome pro features!

[Learn more, Memberships starting at \\$2.50/m!](#)

**Follow me
on Twitter!**

@ConvertingColor